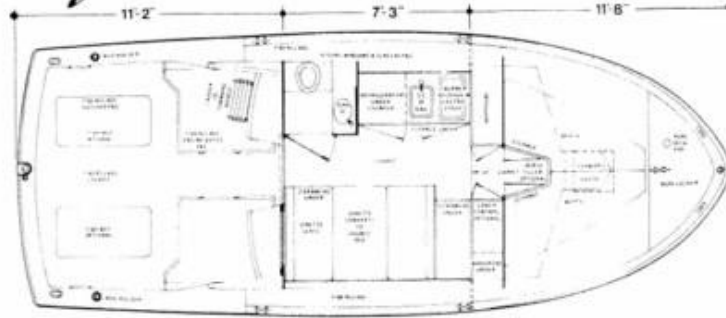


Chris-Craft 30' COMMANDER®



Boat List Price \$	
POWER	
<input type="checkbox"/> A448	ENGINES—Chris-Craft 2 225 H.P., 305 Cu. In., 2.0:1 Reduction, Hydraulic Shift
<input type="checkbox"/> A449	ENGINES—Chris-Craft 2 250 H.P., 350 Cu. In., 2.0:1 Reduction, Hydraulic Shift
<input type="checkbox"/> A450	ENGINES—2 210 H.P. Renault Diesels
<input type="checkbox"/> A024	COOLING, Fresh Water, Includes Water Strainer
<input type="checkbox"/> A023	FILTERS, Fuel 140.00
	METERS, Engine Hour 140.00
	MUFFLERS Std.
<input type="checkbox"/> A133	STRAINERS, Water (Standard w/Fresh Water Cooling) 280.00
HULL	
	BOOT TOP Std.
	CHINE, Wave Deflecting Std.
	LIGHT, Stern, S.S. Std.
	PAINT, Bottom, Anti-Fouling Std.
	RUB RAILS, 1" Std.
<input type="checkbox"/> A053	STEPS, Transom, C.P., w/Teak Leveling Blocks 220.00
	VENT, Fuel, Screened Std.
	VENTILATORS, S.S., (2), Port, (2) Starboard Std.
UNDERWATER	
	BEARINGS, Struts, Bronze, w/Fluted Rubber Liner Std.
	PROPELLERS, Bronze, Three Blade Std.
<input type="checkbox"/> A451	PROPELLERS, Extra Pair, C.C. 225 H.P. 252.00
<input type="checkbox"/> A057	PROPELLERS, Extra Pair, 250 H.P. 252.00
<input type="checkbox"/> A452	PROPELLERS, Extra Pair, Renault 210 H.P. 252.00
	RUDDERS, Bronze Std.
	SEACOCKS, Thru Hull Fittings, Below Waterline Std.
	SHAFTS, S.S., 1 1/2" Dia. Std.
<input type="checkbox"/> A453	SHAFT, Extra, C.C. 225 H.P. 130.00
<input type="checkbox"/> A058	SHAFT, Extra, C.C. 250 H.P. 130.00
<input type="checkbox"/> A454	SHAFT, Extra, Renault 130.00
	SHAFT LOGS, Fiberglass Std.
	STRAINER, Water, External Engine Intakes, Bronze Std.
	STRUTS, Main, Bronze Std.
	STUFFING BOX, Bronze, Adjustable, w/Packing Gland Std.
<input type="checkbox"/> A145	TRIM TABS, Electro Mechanical, w/Centers at Bridge (For Boats without Optional Lower Controls) 680.00
<input type="checkbox"/> A056	ZINCS, Anti-Electrolysis 155.00
SUPERSTRUCTURE	
	HORN, Dual Trumpet, Bridge Mount Std.
	MAST, Fold Down, w/Anchor & Bow Light Std.
	RAILS, Hand, S.S., Side of Bridge, P&S Std.
	WINDSHIELD WIPER, (Standard w/Lower Controls) Std.
FOREDECK	
	ANCHOR, 13 lb. Std.
	CHOCKS, S.S., 6", P&S Std.
	CLEAT, S.S., 10" Std.
	HATCH, Fiberglass, w/Screw Std.
<input type="checkbox"/> A011	PIPE, Rope Deck, S.S. 75.00
<input type="checkbox"/> A051	RAIL, Bow, S.S., w/Stanchions 670.00
	STAFF & PENNANT, Bow, S.S. Std.
SIDE DECKS	
	CLEATS, Spring, S.S., 10", (2) Port, (2) Starboard Std.
	HAWSE HOLES, S.S., Aft, P&S Std.
<input type="checkbox"/> A052	LADDER, 8&S, Side Mount, w/Mounting Plates, P&S 290.00
	ROD HOLDERS, P&S Std.
<input type="checkbox"/> A140	ROD HOLDERS, Additional, (2) 60.00
AFT DECK	
	FUEL FILL, S.S. Std.
	STAFF & FLAG, Stern, Teak Staff & S.S. Base Std.
LAZARETTE	
	HATCHES, Flush from Deck Std.
	STORAGE Std.
	STUFFING BOXES, Rudder Std.
	TANK, Fuel, w/Overboard Overflow Vent Std.
	VALVES, Fuel Line Shutoff Std.

Carry Total Forward \$

Total Brought Forward \$	
COCKPIT	
	MATERIAL, Fiberglass, 10'3"x9'8" Std.
	BULKHEAD, w/Door & Fixed Window to Enclose Deckhouse Std.
	CLEATS, Mooring, S.S., 10", P&S Std.
<input type="checkbox"/> A132	CUSHION, for Engine Box, Starboard 110.00
<input type="checkbox"/> A017	CUSHION, for Engine Box, P&S 220.00
	FIRE EXTINGUISHER, (1), 2 1/2 lb. Std.
<input type="checkbox"/> A022	FISH BOX, Below Hatch, Each (w/o Plumbing) 150.00
<input type="checkbox"/> A004	FISH BOX, Below Hatch, Insulated, Each (w/o Plumbing) 190.00
	HATCH, Fuel Gauge, Direct Reading Std.
	HATCH, Lazarette, (1), Fiberglass, Forward, Optional Generator Std.
	HATCHES, Engine, (2), Fiberglass Std.
	HATCHES, Lazarette, (2), Fiberglass, Aft Std.
	INLET, 115V, Starboard Side Std.
	LADDER, Command Bridge, S.S., w/Teak Treads Std.
	LIGHT, Boarding, (1) Port, (1) Starboard Std.
	SCUPPERS, P&S Std.
<input type="checkbox"/> A191	SEAT, Stern, w/Cushions & Teak Trim Removable 1,050.00
MOORING AND GROUND TACKLE	
	ANCHOR, 13 lb. Chocked on Forward Deck Std.
<input type="checkbox"/> A014	BOAT HOOK & CLIPS, 5" 65.00
	CHOCK, Anchor & Mooring, S.S., 6", P&S Std.
	CLEAT, Anchor & Mooring, S.S., 10" Forward Std.
<input type="checkbox"/> A013	FENDERS, 6"x15", Air Filled, Set of 4 w/Line & Pump 50.00
	LINE, Anchor, 150'x1/4" Nylon Std.
LIGHTS	
	ANCHOR, On Mast Std.
	INTERNATIONAL, Navigation Std.
<input type="checkbox"/> A034	SEARCHLIGHT, Manual, 1/2 Mile Ray, for Command Bridge, 12V 550.00
<input type="checkbox"/> A035	SEARCHLIGHT, Hand Portable Type, w/Jack, 12V 95.00
ELECTRICAL	
<input type="checkbox"/> A272	ADAPTER, Shore Cord, 15 Amp, 115V AC, Each 35.00
<input type="checkbox"/> A396	ADAPTER, Shore Cord, 30 Amp, 115V AC, Each 115.00
	CIRCUIT BREAKER FUSING, AC & DC Std.
<input type="checkbox"/> A021	FRESH WATER FILL, Generator 85.00
<input type="checkbox"/> A158	GENERATING PLANT, 4 KW, Gasoline, 115V, Raw Water Cooled, w/Muffler, Fuel Filter, w/Starting Battery 3,175.00
<input type="checkbox"/> A159	COOLING KIT, Fresh Water, for Optional 4 KW Generator 440.00
	LIGHTNING/SURGE ARRESTER Std.
<input type="checkbox"/> A040	OUTLETS, Additional, Duplex 115V AC, Each 75.00
<input type="checkbox"/> A041	OUTLETS, Additional, Duplex 115V, Waterproof, Each 160.00
	PANELS, Electrical Distribution, AC DC Std.
<input type="checkbox"/> A042	RECTIFIER, 20 Amp, w/Charge Divider 325.00
	SWITCH, Battery Disconnect Std.
	SWITCH, Battery Paralleling Std.
	WIRING, Dockside, 1-115V AC, 30 Amp Inlet, and 4 Duplex Outlets, w/25' 3-Conductor, Ship to Shore Cable Std.
ELECTRONICS	
<input type="checkbox"/> A029	DEPTH SOUNDER, Lower Station 420.00
<input type="checkbox"/> A030	DEPTH SOUNDER, Command Bridge 480.00
<input type="checkbox"/> A149	DEPTH SOUNDER, Digital, Main Unit 990.00
<input type="checkbox"/> A153	DEPTH SOUNDER, Digital, Remote Unit 790.00
<input type="checkbox"/> A135	RADIO TELEPHONE, VHF FM 12 Channels w/Antenna, fully crystalized. Does not include final tuning & testing 2,050.00
<input type="checkbox"/> A020	STEREO TAPE PLAYER, 12V, w/2 Speakers 380.00
ENGINE ROOM	
	BATTERIES, (4), 2 5V in Series for 12V, 140 Ampere Hour Std.
	BATTERY BOXES, w/Covers Std.
	BLOWER, Bilge, 12V Std.
<input type="checkbox"/> A047	EXTINGUISHER, Fire, Automatic 3,200.00
	GENERATOR, 4 KW, Gasoline, Forward (See Electrical for Price)

Carry Total Forward \$

Total Brought Forward \$	
<input type="checkbox"/> A049	WATER PRESSURE SYSTEM, Hot & Cold, w/Hot Water Heater and 115V Immersion Unit 625.00
BILGES	
	PLUG, Hull Drain Std.
	PUMPS, Bilge, (2), 12V, Standby Std.
	SEACOCKS, on Thru Hull Fittings, Below Waterline Std.
	TANK, Fuel Std.
	TANK, Holding for Raritan Toilet, 30 Gal., Aluminum, w/Dockside Discharge (See Head for Price) Std.
	TANK, Water Std.
LOWER CONTROLS	
<input type="checkbox"/> A033	REPLACES STARBOARD HANGING LOCKER, and includes the following: CONTROLS, Clutch & Throttle, Positive Action SEAT, Helm, w/Footrest SWITCHES, Ignition TACHOMETER TRIM TABS WHEEL, Steering, S.S. 3,240.00
<input type="checkbox"/> A027	COMPASS, 3 1/2" Illuminated 105.00
	DEPTH SOUNDER (See Electronics for Price)
	DEPTH SOUNDER, Digital, Remote Unit (See Electronics for Price)
<input type="checkbox"/> A055	WIPER, Port 110.00
COMMAND BRIDGE (Standard) Includes the following:	
	COVER, Instruments & Switches
	ENGINE INSTRUMENTATION, w/Audible & Visual Alarm System, Water Temp., Engine Oil, Transmission Pressure & Oil Temp., Voltmeter & Tachometer (2)
	RAILS, Hand, S.S.
	SEAT, Bench, Aft
	SEAT, Pilot, Swivel
	WHEEL, Steering
<input type="checkbox"/> A126	COMPASS, 3 1/2" Illuminated 105.00
<input type="checkbox"/> A028	DEPTH SOUNDER (See Electronics for Price)
	DEPTH SOUNDER, Digital, Main Unit (See Electronics for Price)
	SEARCHLIGHT, Electric, Remote Control (See Lights for Price)
<input type="checkbox"/> A131	SEAT, Pilot, Bench Type, In Place of Standard Swivel 340.00
<input type="checkbox"/> A026	TOP, Folding 460.00
<input type="checkbox"/> A054	WINDSCREEN 165.00
FOREPEAK	
	LOCKER, Rope, Scuppered to Bilge Std.
FORWARD STATEROOM	
	BERTHS, Vee, w/Mattresses Std.
<input type="checkbox"/> A018	BERTH FILLER 110.00
	CARPETING Std.
<input type="checkbox"/> A032	CURTAIN, Privacy 115.00
	DOORS, Below Berths (1) Port, (1) Starboard Std.
	DRESSER, w/2 Drawers, Aft of Starboard Hanging Locker Std.
	HATCH, Fiberglass, Screened Std.
	LOCKER, Hanging, P&S Std.
	OUTLET, (1), 115V Duplex Std.
	SHIPSIDES, Carped Std.
HEAD	
	FLOOR, Matted Std.
	LIGHT, (1), 12V Std.
	LOCKER, Linen Std.
	OUTLET, (1), 115V Duplex Std.
<input type="checkbox"/> A050	SHOWER, (Must include optional hot and cold water pressure system) 390.00
	SOAP DISH Std.
	TISSUE HOLDER, (1) Std.
<input type="checkbox"/> A155	TOILET, Monomatic II, manual w/Dockside Discharge* Std.
<input type="checkbox"/> A156	TOILET, Monomatic ISE, Electric w/Dockside Discharge, in Place of Std.* 140.00
<input type="checkbox"/> A192	TOILET, Raritan Electric, Includes Holding Tank, in Place of Std. Toilet 675.00
	TOWEL BAR, (1) Std.
	WASH BASIN Std.
	WATER SYSTEM, Manual Std.

Carry Total Forward \$

