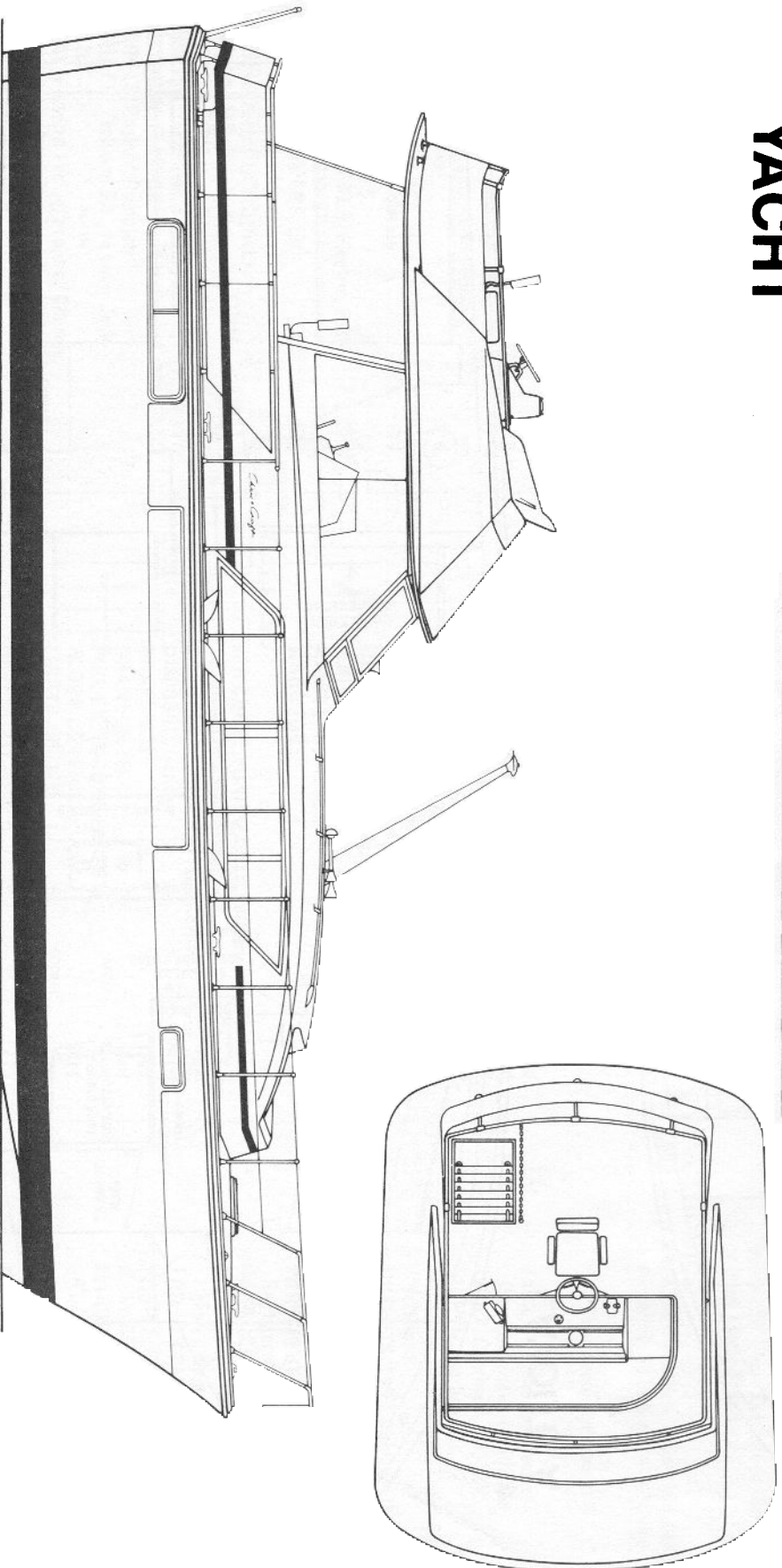




# 41' COMMANDER<sup>®</sup> YACHT

Dealer Name \_\_\_\_\_  
 Address \_\_\_\_\_  
 City & State \_\_\_\_\_  
 Sold To \_\_\_\_\_  
 Address \_\_\_\_\_  
 City & State \_\_\_\_\_

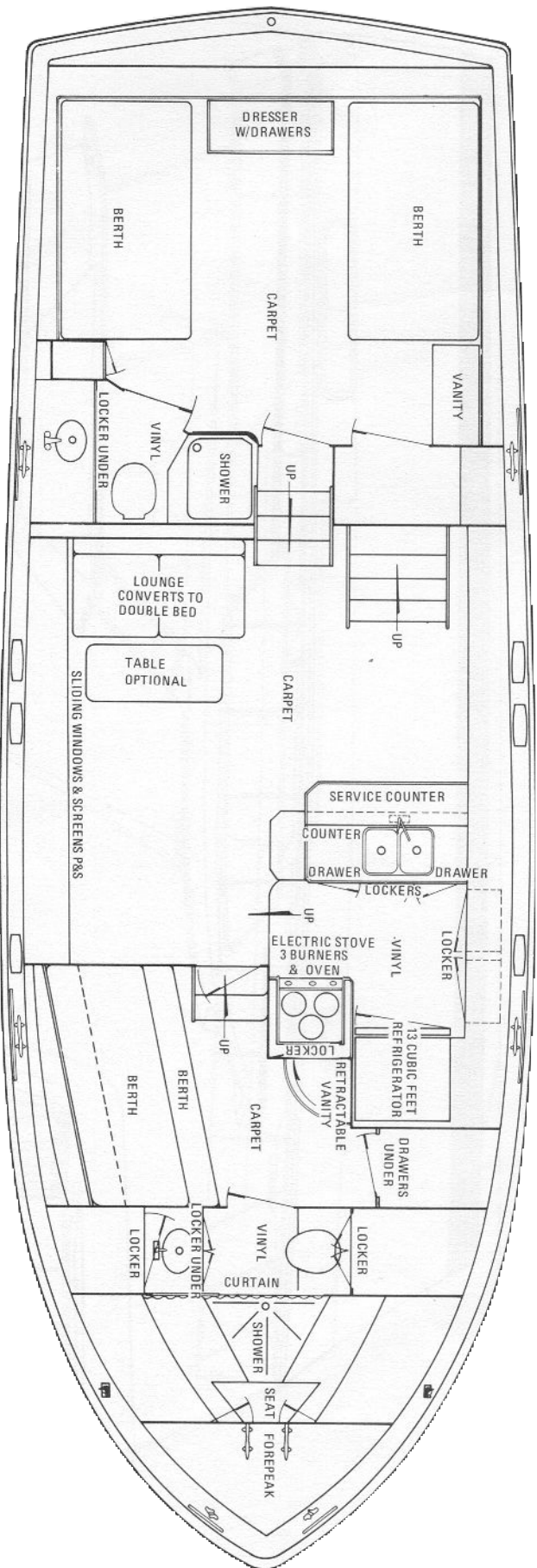
Date \_\_\_\_\_ BSO No. \_\_\_\_\_  
 Ship To \_\_\_\_\_  
 Address \_\_\_\_\_  
 City & State \_\_\_\_\_  
 Ship Via:  Truck  Dealer Pick-up  Rail



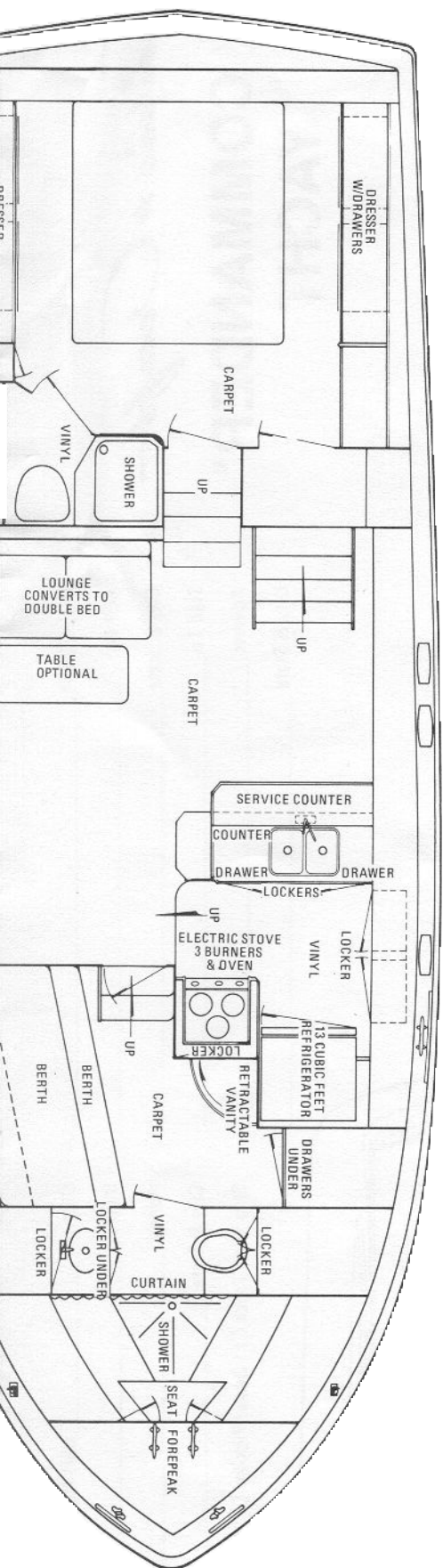
## Specifications

<b>SLEEPING CAPACITY</b> . . . . .	6	<b>U.S. STD. METRIC</b>	6	<b>U.S. STD. METRIC</b>	129½"	3.90 m	<b>HULL - Material</b> . . . . .	Fiberglass
<b>LENGTH</b> . . . . .	41'0"		12.5 m	<b>With Mast Lowered</b> . . . . .	129½"	3.90 m	<b>Method</b> . . . . .	Hand Layup
<b>BEAM</b> . . . . .	14'0"		4.27 m	<b>To Top of Optional Command Bridge</b>	16'4"	4.98 m	<b>Finish</b> . . . . .	Gelcoat, Glossy
<b>DRAFT</b> . . . . .	3'3½"		1 m	<b>WEIGHT (est.)</b>			<b>DECKS - Material</b> . . . . .	Fiberglass
<b>FREEBOARD, FORWARD</b> . . . . .	6'6½"		2 m	<b>Gas</b> . . . . .	29,800 lbs.	13,517 kg	<b>Method</b> . . . . .	Hand Layup
<b>FREEBOARD, AFT</b> . . . . .	5'6"		1.68 m	<b>Diesel</b> . . . . .	32,900 lbs.	14,923 kg	<b>Finish</b> . . . . .	Gelcoat, Textured
<b>HEIGHT FROM WATERLINE (clearance)</b>	16'10"		5.13 m	<b>FUEL CAPACITY</b>			<b>SUPERSTRUCTURE - Material</b> . . . . .	Fiberglass
<b>To Top of Anchor Light</b> . . . . .				<b>Gas</b> . . . . .	350 gals.	1,324 l	<b>Method</b> . . . . .	Hand Layup
				<b>Diesel</b> . . . . .	350 gals.	1,324 l	<b>Finish</b> . . . . .	Gelcoat, Glossy
				<b>FRESH WATER CAPACITY</b> . . . . .	100 gals.	379 l		Except Cabin Top, Textured

• 16" • 12-0" • 11-7" • 6-4" • 5-8" • 3-11" •



**LAYOUT A**



## LAYOUT B

Boat List Price \$ \_\_\_\_\_

Total Brought Forward \$ \_\_\_\_\_

Total Brought Forward \$ \_\_\_\_\_

## POWER

- C558 ENGINES—Chris-Craft, 2-330 H.P., 454 Cu. In., 2.5:1 Reduction, Hydraulic Shift
- C559 ENGINES—Cummins, 2 - 286 HP, 2:1 Reduction Hydraulic Shift
- C501 COOLING, Fresh Water, Chris-Craft Engines 1,080.00
- C603 COOLING, Fresh Water, Cummins Std.
- C602 COOLING, Fresh Water, Cummins Std.
- C603 FILTERS, Fuel 140.00
- C602 METERS, Engine Hour Std.
- C602 MUFFLERS Std.
- C602 STRAINER, Water 280.00
- C602 STRAINER, Water, w/Fresh Water Cooling Std.
- C602 STRAINER, Water, w/Cummins Engines Std.

## HULL

- C504 SWIM PLATFORM, Transom w/Brackets—Teakwood-w/Ladder to Deck, Fold Down 2,490.00
- C503 Ladder to Water, and Handrail Gate Std.
- C503 VENT., Fuel, Screened Std.
- C503 STEPS, Transom, C.P., w/Teak Leveling Blocks Std.
- C504 VENTS, Engine Air Intake, P&S Std.
- UNDERWATER**
- BEARINGS, Struts, Bronze, w/Fluted Rubber Liner Std.
- C505 PROPELLERS, Bronze, Four Blade Std.
- C506 PROPELLERS, Extra Pair, Chris-Craft Engines 530.00
- C506 PROPELLERS, Extra Pair, Cummins 646.00
- RUDDERS, Bronze Std.
- SEACOCKS, Thru Hull Fittings, Below Waterline Std.
- SHAFTS, S.S., 1 1/2" Dia. Std.
- C557 SHAFT, Extra, Each, Gas 380.00
- C507 SHAFT, Extra, Each, Diesel 380.00
- SHAFT LOGS, Fiberglass Std.
- SKEG, Fiberglass Std.
- STRAINER, Water, External Engine Std.
- Intakes, Bronze Std.
- STRUTS, Intermediate, Bronze Std.
- STRUTS, Main, Bronze Std.
- STUFFING BOX, Bronze, Adjustable, Std.

## AFT DECK

- C513 WATER, Shore Connectors, P&S, Valved Direct to Fresh Water System or Tank, Pressure Reducing 500.00
- BULWARK CAP, Teak**
- C514 CHEAFING STRIPS, 18", P&S Std.
- C514 CLEATS, Mooring, S.S., 12", Open Base, P&S Std.
- C514 COMPANIONWAY, Forward, w/Door Std.
- C514 CONTROL PANEL Std.
- C514 CURTAINS, Dacron, Side & Aft, for Extended Hard Top 750.00
- C514 FUEL FILL, P&S, Bronze, C.P. Std.
- C514 GATES, Boarding, P&S Std.
- C515 LADDER, B&S, Side Mount, w/Mounting Plates, P&S 375.00
- C515 LADDER, to Bridge, S.S. & Teak (Included with Optional Bridge) Std.
- C515 LIGHTS, Boarding, P&S (See Lights for Price) Std.
- C515 RAILS & STANCHIONS, S.S., w/Teak Cap and Intermediate Life Lines Std.
- C515 SCUPPERS, P&S, Boot Top Outlets Std.
- C515 SIDESHIELDS, Sliding Std.
- C511 SILL COCK, (1), Fresh Water Washdown 190.00
- C511 STAFF & FLAG, Stern, Teak Varnished, S.S. Base Std.
- C511 STEPS, Boarding, Aluminum Std.
- C511 VENTILATORS, Tank Compartment Std.
- C511 WEATHER PANEL, Vinyl Std.

## MOORING AND GROUND TACKLE

- C517 ANCHOR, 22 lb., Chocked on Forward Deck, Hi-Tensile Std.
- C517 BOAT HOOK AND CLIPS, on Forward Cabin Roof 6'9" Std.
- C517 CHOCKS, Anchor & Mooring, S.S., 7" P&S Std.
- C517 CLEATS, Anchor & Mooring, S.S., 12", Open Base, (2) Std.
- C517 FENDERS, 10"x26", Air Field, Set of 2, w/Line & Pump 85.00
- C517 LINE, Anchor, 150'x5/8", Nylon Std.
- C517 LINES, Mooring, 25'x5/8", (2); 35'x5/8", (2), Nylon Std.
- C518 WINDLASS, Electric, Anchor, Model "A" 500 lbs., 12V 1,425.00

## LIGHTS

- C519 ANCHOR, On Mast Std.
- C519 BOARDING, P&S, at Side Gates 220.00
- C520 DOCKING, Bow, 12V P&S 650.00

- C621 WIRING, Dockside, (1) 115V AC 30 Amp Inlet w/50 Shore Cable (For Use With One or More Electric Heaters) 500.00

## ELECTRONICS

- C602 ANTENNA, Television, Color, Installed w/2 Outlet Jacks, 300 Ohm Coaxial Cable 380.00
- C629 AUTO PILOT, w/Course Changer, 12V 2,390.00
- C530 AUTO PILOT, Hand Held Remote, for Lower Station 310.00
- C631 AUTO PILOT, Hand Held Remote, for Upper Station (Optional Bridge) 310.00
- C532 DEPTH SOUNDER, Lower Controls 420.00
- C533 DEPTH SOUNDER, Upper Controls 490.00
- C572 DEPTH SOUNDER, Digital, Main Unit 990.00
- C573 DEPTH SOUNDER, Digital, Remote Unit 790.00
- C534 LOUD HAILER, Electronic, Weather Resistant Speaker 550.00
- C535 RADAR, Decca Super 110, 115V AC, Includes Tuning & Testing 9,290.00
- C536 RADIO TELEPHONE, VHF-FM 12 Channels w/Antenna, fully crystalized. Does not include final tuning & testing 2,050.00
- C537 REMOTE, for VHF Radio Telephone (Optional Bridge) 830.00
- C538 STEREO TAPE PLAYER/AM-FM RADIO, w/2 Speakers 495.00
- C526 STEREO TAPE PLAYER, 12V DC, Installed, w/2 Speakers 380.00

## ENGINE ROOM

- C539 BATTERIES, (4), 6V, 2 in Series to Make 12V, 140 Ampere Hour Std.
- C539 BATTERY BOXES, w/Covers Std.
- C539 BLOWER, Blige, 12V Std.
- C539 FIRE EXTINGUISHING SYSTEM, Automatic, Forward to Center 1,600.00
- C540 GENERATOR, 6.5 KW Std.
- C540 HOT WATER HEATER, 12 Gals., Forward to Port, w/Cutoff Valve Std.
- C540 INSULATION Std.
- C540 LIGHTS, (2), 12V & (2) Fluorescent Std.
- C540 PANS, Drip, Under Engines, Fiberglass Std.
- C540 PUMP, Blige, Engine Driven, Auxiliary Std.
- C540 SWITCHES, Battery Disconnect Std.
- C540 WATER PRESSURE SYSTEM, Forward to Port Std.

MOORING AND GROUND TACKLE

- C505 PROPELLERS, Bronze, Four Blade 530.00 Std.
- C506 PROPELLERS, Extra Pair, Chris-Craft Engines 646.00 Std.
- C507 PROPELLERS, Extra Pair, Cummins Engines 646.00 Std.
- RUDDERS, Bronze 646.00 Std.
- SEACOCKS, Thru Hull Fittings, Below Waterline 646.00 Std.
- SHAFTS, S.S., 1 1/2" Dia. 380.00 Std.
- SHAFT, Extra, Each, Gas 380.00 Std.
- SHAFT, Extra, Each, Diesel 380.00 Std.
- SHAFT LOGS, Fiberglass 380.00 Std.
- SKEG, Fiberglass 380.00 Std.
- STRAINER, Water, External Engine Intakes, Bronze 380.00 Std.
- STRUTS, Intermediate, Bronze 380.00 Std.
- STRUTS, Main, Bronze 380.00 Std.
- STUFFING BOX, Bronze, Adjustable, w/Packing Gland 380.00 Std.
- TRIM TABS, Electro-Mechanical, w/Controls at Bridge 380.00 Std.
- ZINCS, Anti-Electrolysis 155.00 Std.

- C517 FENDERS, 10"x26", Air Field, Set of 2, w/Line & Pump 85.00 Std.
- C518 WINDLASS, Electric, Anchor, Model "A", 500 lbs., 12V 1,425.00 Std.

- ANCHOR, 22 lb., Chocked on Forward Deck, Hi-Tensile 530.00 Std.
- BOAT HOOK AND CLIPS, on Forward Cabin Roof 6" 646.00 Std.
- CHOCKS, Anchor & Mooring, S.S., 7", P&S 646.00 Std.
- CLEATS, Anchor & Mooring, S.S., 12", Open Base, (2) 646.00 Std.
- LINE, Anchor, 150'x5/8", Nylon 380.00 Std.
- LINES, Mooring, 25'x5/8", (2); 35'x5/8", (2), Nylon 380.00 Std.
- WINDLASS, Electric, Anchor, Model "A", 500 lbs., 12V 1,425.00 Std.

LIGHTS

- ANCHOR, On Mast 220.00 Std.
- BOARDING, P&S, at Side Gates 220.00 Std.
- DOCKING, Bow, 12V, P&S 650.00 Std.
- INTERNATIONAL, Navigation 650.00 Std.
- SEARCHLIGHT Electric, Remote, 1 Mile Ray, Dual Station, 12V, Includes Weblon Cover 1,200.00 Std.
- SEARCHLIGHT, Hand Portable Type, w/Jack, 12V 95.00 Std.
- SEARCHLIGHT, Manual Remote, 1 Mile Ray, for Hardtop Mount, 12V, Includes Weblon Cover 680.00 Std.
- SEARCHLIGHT, Electric, Remote, #733-ECA - 1 Mile Ray, for Hardtop Mount, 12 Volt, Includes Weblon Cover 1,050.00 Std.

- ANCHOR (See Ground Tackle)
- CHAFING STRIPS, 12", S.S., P&S
- CHOCKS, S.S., 7", P&S
- CLEATS, S.S., 12", Open Base, (2)
- HATCH, Cast Aluminum, Screened, w/Deadlight
- INLET, (1), 115V, AC, 30 Amp. Portside, Inside Seat
- INLET, Telephone, Chrome Plated, w/2 Jacks, Inside Seat
- PIPE, Rope Deck, Additional, w/Partitioned Rope Locker
- RAIL, Bow, 28" High, S.S., w/Stanchions
- SEAT, Scuppered, w/Storage Below and Cushions
- SILL COCK, (1), Fresh Water Washdown
- STAFF & PENNANT, Bow, S.S.

- GENERATING PLANT, 6.5 KW, 115V, Gas, Raw Water Cooled, Remote Start Station, w/Muffler, Fuel Filter 440.00 Std.
- COOLING KIT, Fresh Water, for Std. Gas Generator 440.00 Std.
- GENERATING PLANT, 7.5 KW, Diesel, Raw Water Cooled, Remote Start Station, w/Indicator Light, Muffler, Fuel Filter w/Diesel option 575.00 Std.
- COOLING KIT, Fresh Water, for Std. Diesel Generator 575.00 Std.
- LIGHTNING/SURGE ARRESTER 575.00 Std.
- OUTLETS, Additional, Duplex 115V AC, Each 75.00 Std.
- OUTLETS, Additional, Duplex 115V, Waterproof, Each 160.00 Std.
- PANEL, 12V DC and 115V AC, Back Lighted for Night Viewing, Includes Push/Pull Circuit Breakers, Power Meters, Throw-Over Switches (with A/C), Light Plant Controls, Engine Hour Meters, Bonded, Grounded RECTIFIERS, (2), 20 Amp P&S Battery Systems w/Charge Dividers 160.00 Std.
- WIRING, Docksides, (1), 115V AC, 30 Amp Inlet, Including (1) 50' Ship to Shore Cable 160.00 Std.

ELECTRICAL

- SWITCH MODULES, for Lights, Trim, Engine Controls, Blower 220.00 Std.
- ALARMS, Visual and Audio P&S 220.00 Std.
- AUTO PILOT, (See Electronics for Price)
- AUTO PILOT, Hand Held Remote (See Electronics for Price)
- COMPASS, 5", Illuminated 220.00 Std.
- CONSOLE FACE, Hinged for Access 220.00 Std.
- CONTROLS, Clutch & Throttle, Positive Action 220.00 Std.
- DEPTH SOUNDER, (See Electronics for Price)
- DEPTH SOUNDER, Digital, Main Unit (See Electronics for Price)
- ELECTRONICS (Engineered Locations in Panel) 220.00 Std.
- ENGINE INSTRUMENTATION, Water Temp., Engine Oil, Transmission Oil Pressure & Volt Meter, P&S 220.00 Std.
- FIRE EXTINGUISHERS, 2 1/2 lb. INSTRUMENTATION, Back Lighted for Night Viewing 220.00 Std.
- LOCKER, for Accessory Switches and Gauges 220.00 Std.
- C525 OUTLET, 115V Duplex, Waterproof SEARCHLIGHT, Manual, Remote (See Lights for Price) 160.00 Std.
- C549 SEARCHLIGHT, Hand Portable Type (See Lights for Price) 160.00 Std.
- SEAT, Helm, Adjustable, w/Footrest STEERING, Hydraulic 160.00 Std.

- BULKWARK CAP, Teak
- CLEATS, Spring, 12", Open Base, S.S., (2) P&S, w/30" S.S. Chafing Strips
- RAILS & STANCHIONS, S.S., and Intermediate Life Lines
- SCUPPERS, C.P., P&S
- VENTILATORS, S.S., (3), P&S, Cowl Type

- BATTERY BOXES, w/Covers
- BLOWER, Bilge, 12V
- FIRE EXTINGUISHING SYSTEM, Automatic, Forward to Center
- GENERATOR, 6.5 KW
- HOT WATER HEATER, 12 Gals., Forward to Port, w/Cutoff Valve
- INSULATION
- LIGHTS, (2), 12V & (2) Fluorescent
- PANS, Drip, Under Engines, Fiberglass
- PUMP, Bilge, Engine Driven, Auxiliary
- SWITCHES, Battery Disconnect
- WATER PRESSURE SYSTEM, Forward to Port

BILGES

Carry Total Forward \$

Carry Total Forward \$

Carry Total Forward \$

- SWITCH, Battery Paralleling** Std.  
**SWITCH, Security** Std.  
**SWITCH, 3 Position for VHF, Loud Hailer & S.S.B. w/Microphone and Speakers** Std.  
 Above Headlining  
**TACHOMETERS, Waterfall Type,** Std.  
 w/Synchronizing Light  
**WHEEL, Steering, S.S.** Std.  
 C541 **WINDSHIELD OPENER, Electric, Each** 520.00  
 C509 **WINDSHIELD WASHER, 2 Section** 325.00  
**WINDSHIELD WIPERS, (2)** Std.

**COMMAND BRIDGE (OPTIONAL)**

- C542 **BRIDGE—Includes the following:** 8,900.00  
**COMPASS, 3 1/2", Illuminated**  
**CUSHION, for Forward Facing Seat**  
**INSTRUMENTATION (Back Lighted) & CONTROLS, Engines, Complete**  
**LADDER, Teak and S.S., to Main Deck**  
**RAILS, S.S.**  
**SEAT, Forward Facing, Front of Console**  
**SEAT, Helm, Sliding**  
**STORAGE, Under Console**  
**SWITCH, 3 Position for VHF, Loud Hailer, S.S.B., w/Microphone and Speakers**  
**WEATHER CLOTHS**  
**WHEEL, Steering, S.S.**  
**WINDSCREEN**  
**AUTO PILOT, Remote (See Electronics for Price)**  
**DEPTH SOUNDER, (See Electronics for Price)**  
**DEPTH SOUNDER, Digital, Remote Unit (See Electronics for Price)**  
**LOUD HAILER, (See Electronics for Price)**  
**REMOTE, for VHF-FM Radio Telephone (See Electronics for Price)**  
**SEARCHLIGHT, Electric, Remote Control (See Lights for Price)**  
**SEARCHLIGHT, Hand Portable Type, w/Jack, 12V (See Lights for Price)** 570.00  
 C543 **TOP, Folding** 130.00  
 C565 **WINDSHIELD, for Control Console**

**FOREPEAK**

- PARTITIONED, for Two Anchor Lines (See Foredeck for Price)**  
**LOCKER, Rope, Scuppered to Bilge** Std.

**FORWARD HEAD**

- COUNTERTOP, HPL** Std.  
**FAN Exhaust** Std.  
**FLOOR COVERING, Vinyl** Std.  
**GLASS & TOOTHBRUSH HOLDER** Std.  
**HATCH, Cast Aluminum, Screened, w/Deadlight** Std.  
**LIGHTS, (2), 12V** Std.  
**LOCKERS, (2), for Linen & Medicine** Std.  
**MEDICINE CHEST** Std.

**GALLEY**

- FIRE EXTINGUISHER, 2 1/2 lb.** Std.  
**HATCH, to Bilge** Std.  
**LIGHT, Overhead, (1), 12V** Std.  
**LIGHTS, Reading, (2), 12V** Std.  
**LOCKER, Under Lower Berth** Std.  
**LOCKER FRONTS & TRIM, Teak** Std.  
**MIRROR, Above Vanity** Std.  
**OUTLET, (1), 115V Duplex** Std.  
**PORTLIGHT & SCREEN, P&S** Std.  
**VANITY, Retractable** Std.  
**WARDROBE** Std.  
**AIR CONDITIONING UNIT, w/Controls, Reverse Cycle (See Miscellaneous for Price)** Std.  
 C544 **COUNTERTOP, HPL, w/Teak Keepers** 275.00  
**DISPOSAL, Garbage** Std.  
**DRAPERIES** Std.  
**DRAWERS, (5)** Std.  
**FIRE EXTINGUISHER, 2 1/2 lb.** Std.  
**FLOOR COVERING, Vinyl** Std.  
**LIGHTS, (3), 12V** Std.  
**LOCKERS, (4), for Dishes, Groceries etc.** Std.  
**OUTLET, (1), 115V Duplex** Std.  
**REFRIGERATOR, 13 Cu.Ft., Combined w/Freezer (2 Door), Bronze** Std.  
**SINK, Double, S.S., Hot/Cold Water Pressure w/Spray Hose** Std.  
**STOVE, 3-Burner, w/Oven and Rotisserie** Std.  
**WALL COVERING, Teak** Std.  
**WASTE BASKET, Under the Floor** Std.  
**WINDOWS & SCREENS** Std.

**MAIN SALON**

- AIR CONDITIONING UNIT, w/Controls, Reverse Cycle (See Miscellaneous for Price)** Std.  
**BULKHEADS, Vinyl Covered** Std.  
**CARPETING, w/Keepers** Std.  
 C545 **CHAIR, Occasional** 400.00  
**COMPANIONWAY, w/Door, to Aft Cabin** Std.  
**COMPANIONWAY, w/Door, to Forward Cabin** Std.  
**COMPANIONWAY, w/Door and Hatch, to Bridge** Std.  
**DRAPERIES** Std.  
**GLASS, Tinted** Std.  
 C555 **HEATER, 115V Ac, 1500 Watt, Wall Type, w/Thermostat (Requires Dockside Wiring, 115V AC Inlet, w/50' Shore Cable) See Separate Option** 260.00  
**JACK, Telephone (See Foredeck for Price)** Std.  
**LIGHT, Ceiling, (1), Center** Std.  
**LOUNGE, Convertible** Std.  
**OUTLETS, 115V, Duplex, P&S** Std.  
**PANELING & KEEPERS, Teak and Vinyl** Std.  
**SPEAKERS, Stereo (See Electronics for Price)** Std.

**MASTER HEAD**

- JACK, T.V., Above Dresser (See Electronics for Price)** Std.  
**LIGHT, Overhead, (1), 12V** Std.  
**LIGHTS, Reading, (2), 12V** Std.  
**MIRROR, Full Length, Toilet Compartment Bulkhead** Std.  
**OUTLETS, 115V Duplex, (1) each** Std.  
**Dresser and Night Stand** Std.  
**PANEL, to Rudder & Trim Tab Mechanism** Std.  
**PORTLIGHTS & SCREENS, (1), Port, (1) Starboard** Std.  
**TANK, Water, Under Floor** Std.  
**TEAK TRIM, Doors, Lockers, Drawers, Keepers, Base of Bed** Std.  
**TOILET COMPARTMENT** Std.  
**VANITY, Port** Std.  
**WALL COVERING, Vinyl** Std.  
**WARDROBE, Folding Teak Doors, 4', Aft, w/Clothes Bar** Std.

**MISCELLANEOUS**

- C547 **AIR CONDITIONING, Reverse Cycle, Includes 115V 30 Amp Inlets, 3 Phase Selector Switch and 50' Shore Cable** 6,290.00  
**BELL, Fog** Std.  
**CRADLE** Std.  
 C548 **FILTER, Aqua-Pure in Fresh Water System** Std.  
**JACKETS, Life, (6)** Std.

