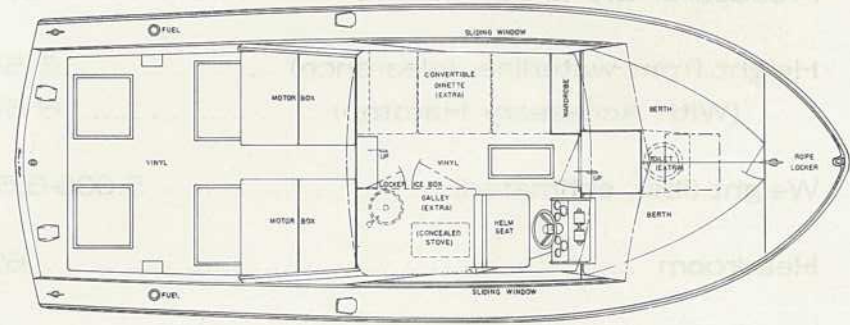
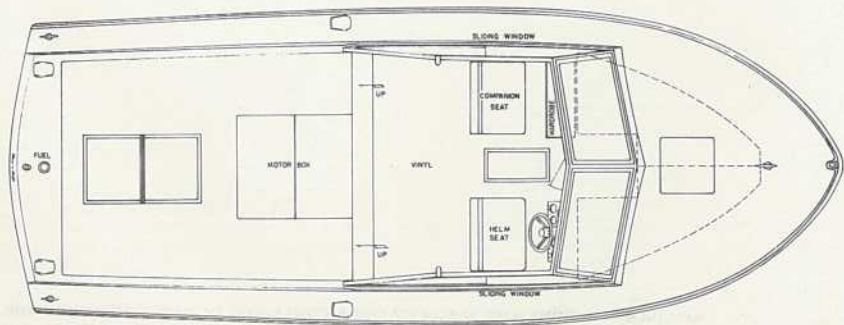
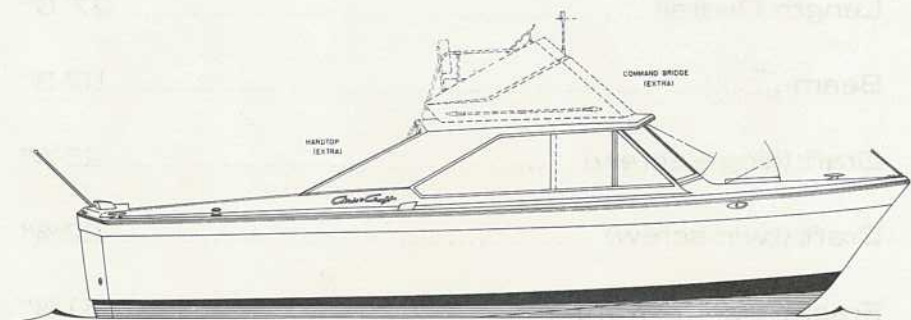
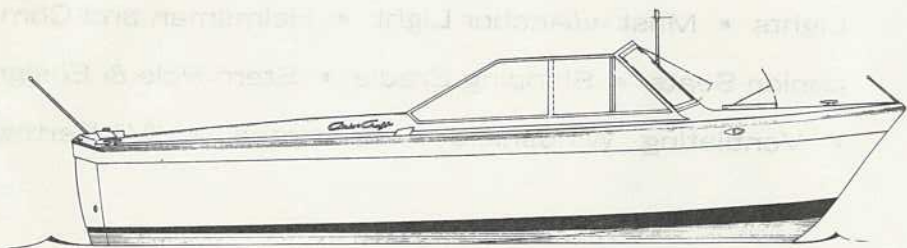


Chris-Craft®

1966 27' COMMANDER SPORTS EXPRESS



1966 27' COMMANDER SPORTS EXPRESS

SPECIFICATIONS

Sleeping Capacity	2
Length Overall	27' 0"
Beam	10' 3"
Draft (single screw)	25¼"
Draft (twin screw)	22¼"
Freeboard, forward	51¾"
Freeboard, aft	37¾"
Height from waterline, (clearance)	6' 5½"
(With Accessory Hardtop)	6' 6½"
Weight (lbs., estimated)	5,606-6,500
Headroom	6' 2"
Fuel Capacity, gallons (single screw)	48
Fuel Capacity, gallons (twin screw)	80
Fresh-Water Capacity, gallons (w/accy. galley)	14.5
Forward, Side and Aft Decks	Fiberglass
Cockpit Floor	Vinyl-covered

STANDARD EQUIPMENT

Anchor Light • Bow Pole & Pennant • Chocks • Cleats
• Deck Hatch, Forward • Electric Horn (12V) • Fire
Extinguishers (2) • Fog Bell • International Navigation
Lights • Mast w/Anchor Light • Helmsman and Com-
panion Seats • Shipping Cradle • Stern Pole & Ensign
• Ventilating Windshield • Wardrobe • "V" Berths.

ALL ILLUSTRATIONS AND SPECIFICATIONS CONTAINED IN THIS LITERATURE ARE BASED ON THE LATEST PRODUCT INFORMATION AVAILABLE AT THE TIME OF PUBLICATION APPROVAL. THE RIGHT IS RESERVED TO MAKE CHANGES AT ANY TIME WITHOUT NOTICE IN PRICES, COLORS, MATERIALS, EQUIPMENT, SPECIFICATIONS AND MODELS, ALSO TO DISCONTINUE MODELS.

CHRIS-CRAFT DIVISION
Chris-Craft Corporation, Pompano Beach, Florida