

Chris-Craft
45' FLUSH DECK



Tradition just went by the boards.

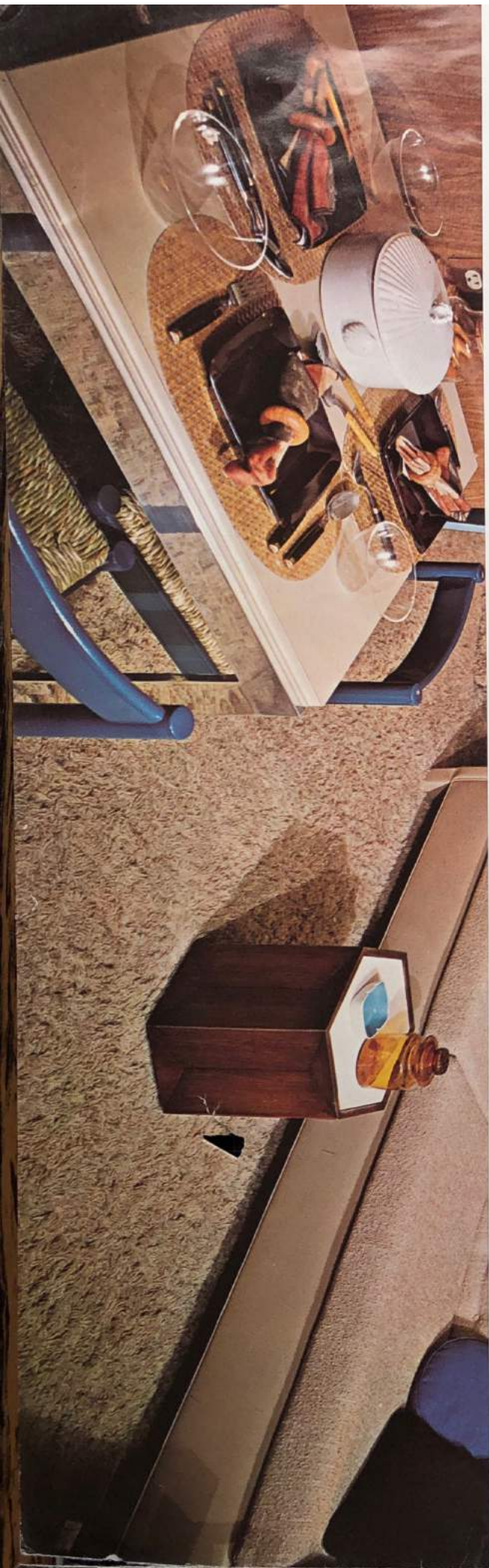
It used to be that homes ashore were comfortable, boats were not. Traditionally, some comforts had to be sacrificed when one left the land. But as you'll see aboard this new all-fiberglass Chris-Craft, there are comforts and features that will be the envy of many a luxury dwelling ashore.

On-deck areas are all on one level, and well-protected side decks make passage forward and aft easy even in a sea. A long extended hardtop shields the afterdeck from the elements; tailored curtains to enclose the entire aft area are available. On the forward deck is a much-appreciated feature, a wide bow seat. It's ideal for basking in the sun, and 18 cubic feet of storage space are concealed beneath it.

A lot of thought went into laying out the control station. All instruments are highly visible, and important ones such as compass, tachometers and depth sounder (when installed) are positioned parallel to the centerline, in the pilot's normal line of vision. And all controls are within easy reach, arranged for effortless operation. A number of automatic devices have been installed to assist the pilot in keeping tabs on various functions as well.

Extended cruising enthusiasts will appreciate the 500 gallon fuel capacity which makes long hauls possible, plus the fact that the tanks are installed close to the hull's center of buoyancy, which improves stability.

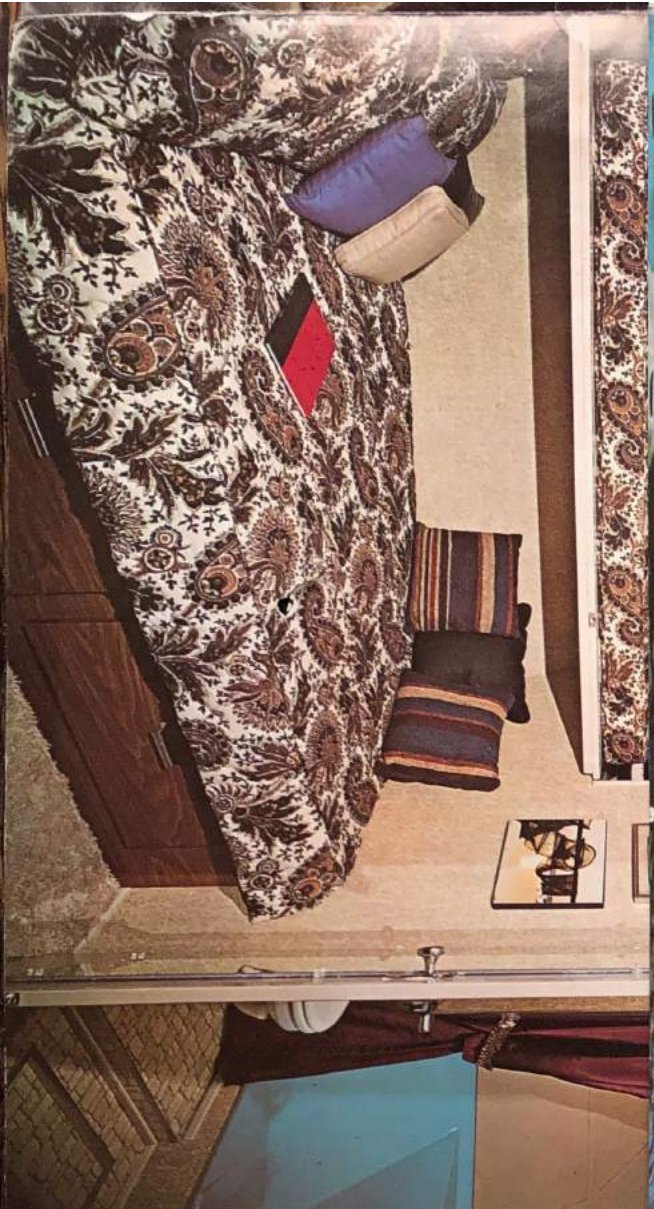
Twin 325-hp or 350-hp diesel engines are available, and Chris-Craft Trim Control with position indicators is standard equipment.





SPECIFICATIONS

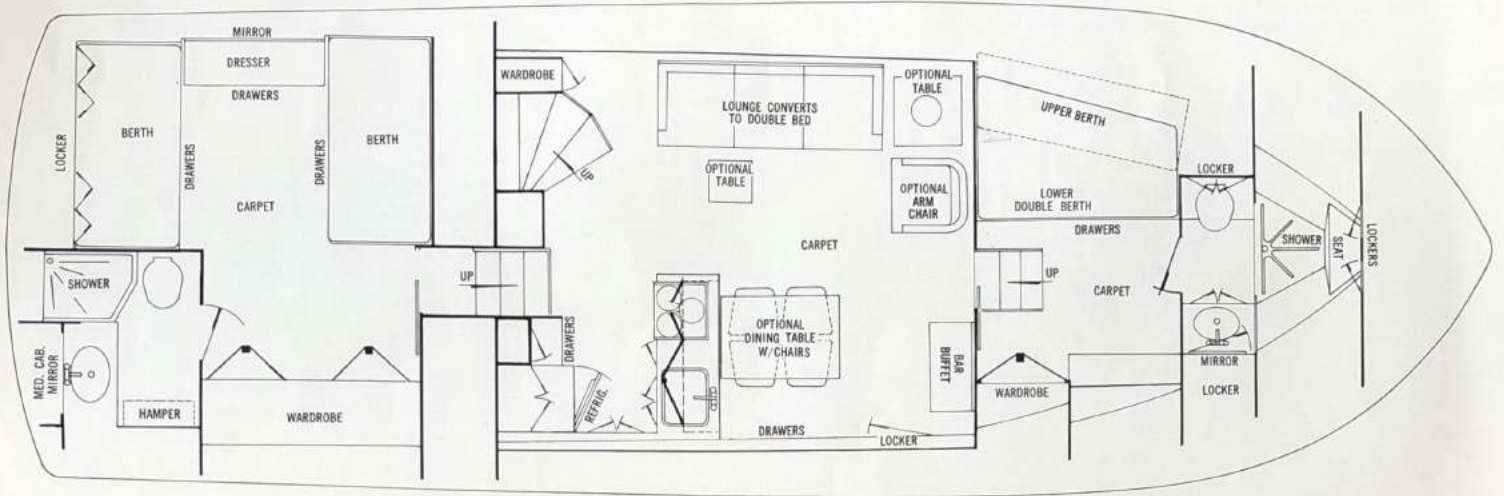
SLEEPING CAPACITY	6
LENGTH	45'-0"
BEAM	15'-0"
DRAFT	49½"
FREEBOARD, FORWARD	7'-2½"
FREEBOARD, AFT	5'-9¾"
WEIGHT (lbs, displacement, est.)	27,907
HEIGHT FROM WATERLINE (clearance) With Mast Down	13'-2"
With Mast Up	15'-10"
FUEL CAPACITY, Gallons	500
FRESH-WATER CAPACITY, Gallons	175
FORWARD, SIDE AND AFT DECKS	Fiberglass



Looking toward the portside in the master stateroom, showing rich, coordinated bedspreads, headboards and draperies. Note storage space under berths and in aft bulkhead.

Forward view of richly designed guest stateroom, which offers sleeping accommodations for three persons. Bulkheads throughout are covered in a durable textured material which is easily wiped free of fingerprints, etc.

Chris-Craft 45' FLUSH DECK



Below: Main salon, looking aft. Winding staircase leads to afterdeck and control station. Shag carpeting is the same throughout all interior areas. The long lounge opens outward into a double bed.

At Right: The broad afterdeck is perfect for fresh air entertaining. Thick shag carpeting in bright blues is durable and weather-resistant. All furniture shown is optional.





A handsome blending of natural wood, beige and blue, with accents of polished chrome make the interior of the Chris-Craft 45' Flush Deck Cruiser extremely attractive. The decor is carried throughout the main salon, forward guest stateroom, and the large master stateroom. The last occupies the entire aft section of the hull. Placed transversely are large twin berths with drawer storage beneath them, separated by a long custom-designed dresser with mirror. Louvered doors over the aft berth open into a large storage locker. On the starboard side of the stateroom is a long full-length wardrobe. Just aft is the master bath with stall shower, sink, and large mirrored medicine chest, plus linen storage under the sink, and a built-in hamper.

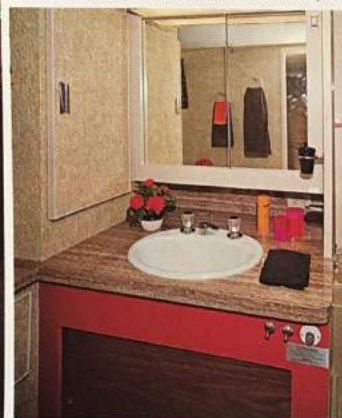
There's an unusual yet very practicable arrangement in the main salon, in which the U-shaped galley is an integrated part, much like the kitchen-family room arrangements now popular ashore. An athwartship counter contains a sink, electric range and oven, and a dropleaf at the end for extra counterspace. Drawers, cupboards and storage lockers are plentiful. In the corner is a 10-cubic foot refrigerator-freezer. Another refrigerator-freezer is in the bar unit at the forward end of the salon. A lounge which converts to a double bed is on the port side of the salon. Next to the stairs leading topside is a stereo tape player (standard).

Another unique arrangement is found in the forward stateroom. Instead of regular upper and lower berths, the lower is double-sized, complete with headboard. There is abundant drawer storage under the berth. A mirrored dresser and a hanging wardrobe are on the starboard side of the stateroom, and there's a large private bath with stall shower forward.

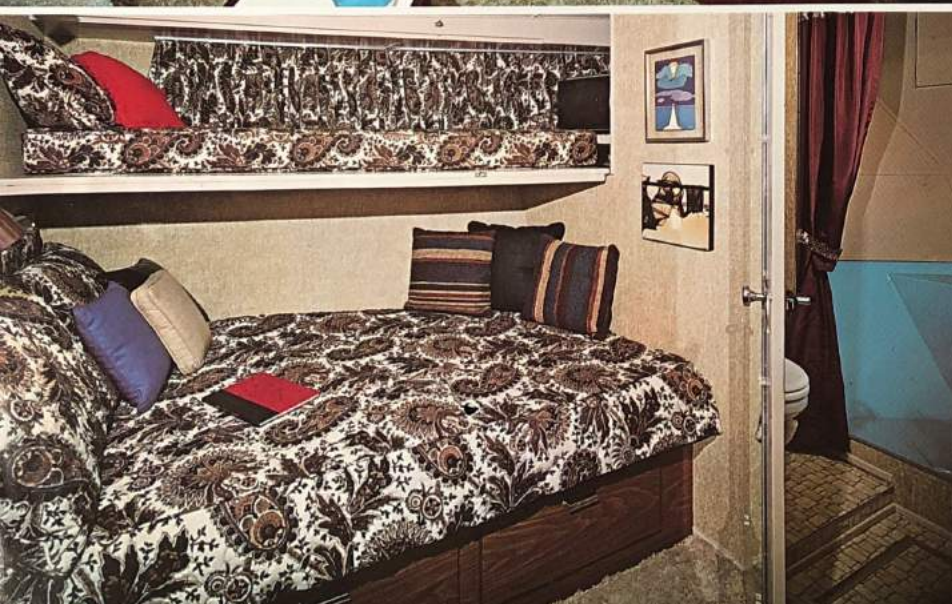
Some factory-installed options available: reverse cycle air conditioning, Command Bridge®, full-width stern seat, and transom swimming platform with ladder and cockpit rail gate.



At Left: Main salon, looking forward. Overhead storage in galley gives kitchen-family room feeling of a ranch-style home. Blue dropleaf at end of electric range provides extra counterspace.



Master bathroom. Sink and vanity combination offers counterspace and linen storage space below; medicine chest has mirrored sliding doors. More storage is at left.



Looking toward the portside in the master stateroom, showing rich, coordinated bedspreads, headboards and draperies. Note storage space under berths and in aft bulkhead.

Forward view of richly designed guest stateroom, which offers sleeping accommodations for three persons. Bulkheads throughout are covered in a durable textured material which is easily wiped free of fingermarks, etc.

STANDARD EQUIPMENT

PROPULSION

FUEL FILTERS
MUFFLERS (except on turbo-charged Diesel Engines)
STRAINERS W/SEACOCKS, Engine Raw Water Intakes

ELECTRICAL

BATTERY PARALLELING SWITCH for Momentary Paralleling of Engine Batteries
BATTERY DISCONNECT SWITCHES for Isolating Engine Batteries
RECTIFIER, Battery Charging, 40 Amps.
CIRCUIT BREAKER FUSING, AC & DC Circuits
GENERATOR, 6.5 KW Onan, Gasoline, Fresh Water Cooled, Remote Start Station & Indicator Lights (7.5 KW if diesel powered)
DOCKSIDE WIRING, 115V AC 30 Amp. Inlets, Port & Stbd.

ELECTRONICS

MICROPHONE & SPEAKERS w/Microphone Selector Module for Optional Radio-Telephones & Loud Hailer

GROUND TACKLE

ANCHOR, Danforth 40 lb. "Standard" Model
ANCHOR CHOCKS
ANCHOR LINE, 5/8" x150' Nylon, Complete w/Eye

Splice, Thimble & Anchor Shackle
ROPE DECK PIPE for Anchor Line

COMFORT AND CONVENIENCE

BEDSPREADS, Aft Stateroom
STEREO TAPE PLAYER, Complete w/Built-In Stereo Speakers
BOAT HOOK, 9 ft., Mounted
CARPETING Throughout Interior
DRAPEs Throughout Interior
EXHAUST FAN in Aft Toilet Room
WATER PRESSURE SYSTEM, Hot & Cold, Engine & 115V AC Heated Hot Water
HORN, Electric, Dual Trumpet
REFRIGERATOR-FREEZER, 10 cu. ft.
RANGE, Electric, 3-Burner w/Oven, Rotisserie, Stove Cover
LOUNGE, Convertible, in Salon
SCREENS, Opening Windows, Portlight & Hatches
HELMSMAN SEAT
SHOWERS, Complete w/Hot & Cold Water, Drain Pumps & Curtains
WINDSHIELD WIPERS, 3
WINDSHIELD OPENER, Electric

LIGHTS

ANCHOR
INTERNATIONAL NAVIGATION
ENGINE ROOM, 2

TOILETS

ELECTRIC, 2

SAFETY

FOG BELL
ALARM, Water and Transmission Oil Temp., Engine Oil Pressure, Audible and Visual Indicators
SEACOCKS on All Underwater Thru-Hull Fittings (except raw water intakes on gasoline engines)
BUDGE BLOWER
BUDGE PUMPS, Automatic, 2
EXTINGUISHERS, Fire, 2 1/2 lb Dry Chemical, 3
LIFE PRESERVERS, 8
RAILS, Aft Deck w/Gates Port & Starboard
RAILS, Safety, Bow Rail Plus Lifelines & Stanchions on Side Decks

WEATHER PROTECTION

WEATHER CLOTHS, Aft Deck, Rail to Deck, Vinyl

MISCELLANEOUS

COMPASS, Flush Mount, 5", Illuminated
FLAG MAST, Aft w/American Flag
FLAG MAST, Fwd. for Burgee
FLAG MAST, Amidships w/Anchor Light, Spreader
MOORING BITS on Aft Deck
TOW POST, Fwd. Deck
RUBBER ANGLE INDICATOR
TRIM CONTROL, w/Position Indicators
ZINCS, Electrolytic

Specifications contained in this literature are based on the latest product information available at the time of publication approval. The right is reserved to make changes at any time without notice in prices, colors, materials, equipment, specifications and also to discontinue models. Equipment and accessories pictured but not included in the list of standard equipment items will be furnished at extra cost if available irrespective of the place of manufacture. The right is reserved to ship from any Chris-Craft factory. All orders accepted subject to prices prevailing at time of shipment. Orders are subject to acceptance only at Chris-Craft Corp., Pompano Beach, Florida 33061.

The boat described herein is guaranteed under a written Chris-Craft warranty for a specified period of time against malfunctions resulting from defects in material or workmanship. For full details on the Chris-Craft warranty, contact your Chris-Craft dealer.

CHRIS-CRAFT CORPORATION, POMPANO BEACH, FLORIDA 33061