

Chris★Craft®

1966 commander



luxurious, high-performance fiberglass cruisers

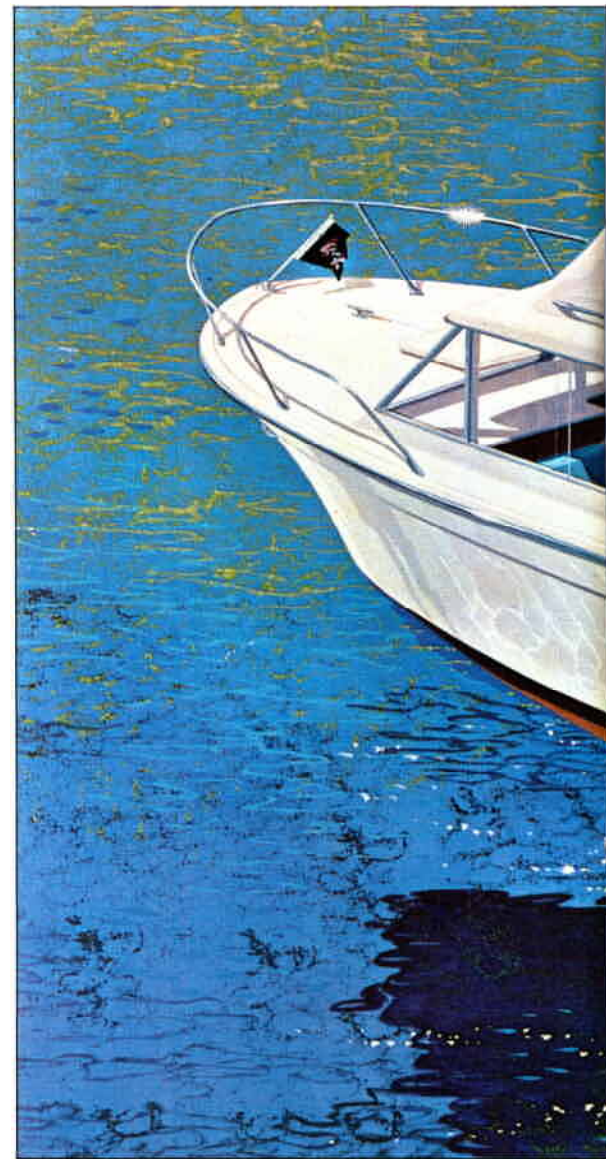
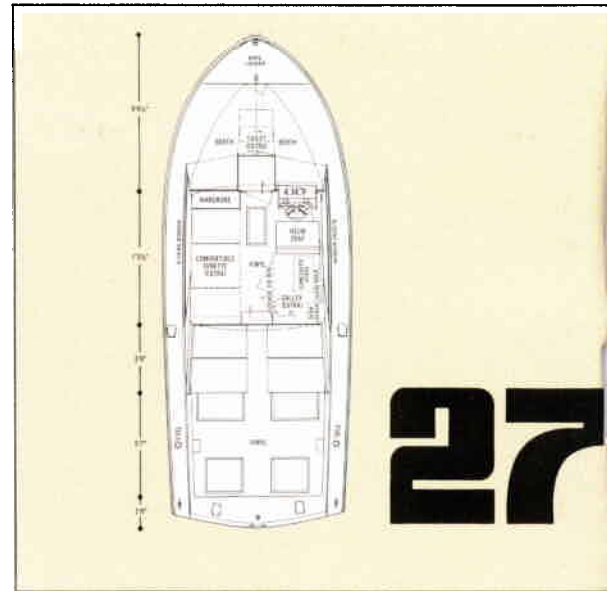
the wonder material and the master builder



As a construction material for boats, laminated fiberglass is ideal. It can be molded into almost any shape imaginable to achieve great strength and performance advantages. Dry rot, marine borers, water, gasoline, and the sun's rays won't damage it. It doesn't corrode, and isn't affected by temperature changes. Color can be permanently molded into it, eliminating the need for periodic painting. And the years have little effect.

There can be a great difference between fiberglass hulls, however. Contrary to what many people believe, building a fiberglass boat is not a simple matter. Actually more precision engineering is required for working with fiberglass than with other materials. And as with any material, the skill of the builder is all-important.

That's why there's such a difference between Commanders and other fiberglass cruisers. Chris-Craft brings more than 70 years of boatbuilding experience to bear in producing the Commander fleet. And the Commanders show it. The superior design, precision engineering, and attention to detail that Chris-Craft is famous for is everywhere in evidence. With their easily recognized V-transoms and the high performance hulls with molded-in speed stabilizers, the 1966 Commander fleet is the most outstanding series of fiberglass cruisers on the water. See them now.



You can design this model to suit the type of boating activity you want to pursue. For outings, fishing parties, and utility purposes, it's an open boat with an enormous cockpit. Standard equipment includes helmsman and companion seats, and a wardrobe forward. Available with soft top, hardtop, Command bridge, and toilet. Single-screw models may add (as extra) either galley or dinette. Twin-screw model may add both galley *and* dinette (as extras). Sleeps 2, or 4 with dinette. Single 185 or 210-hp V8's, or twin 185's. Top speed is 37 mph.

commander sports express

SPECIFICATIONS

Sleeping Capacity	2
Length	27'
Beam	10'3"
Draft (single screw)	25 1/4"
Draft (twin screw)	22 1/4"
Freeboard, forward	51 1/4"
Freeboard, aft	37 1/4"
Height from waterline (clearance)	6'5 1/2"
Weight (lbs. estimated w/cradle)	5,666 - 6,500
Headroom	6'2"
Fuel Capacity, gallons (single screw)	48
Fuel Capacity, gallons (twin screw)	80
Cockpit Floor	Vinyl

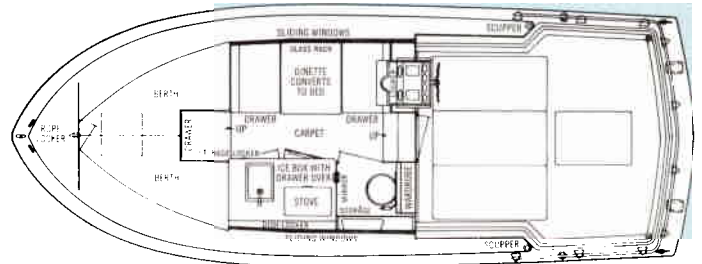
STANDARD EQUIPMENT

Anchor Light • Berth Platform • Bow Pole and Pennant Chocks • Cleats • Deck Hatch, forward • Electric Horn, 12-volt • Fire Extinguishers (2) • Fog Bell • International Navigation Lights • Mast w/Anchor Light • Helmsman and Companion Seat • Shipping Cradle • Stern Pole and Ensign • Ventilating Windshield • Wardrobe.



27' commander express

28" 511" 43" 32" 110"



With a wide, well-protected cockpit and an interior furnished in high style and high quality, this model is perfect for cruising a family of four. All deck surfaces have a non-skid texture. There's a full-height enclosed lavatory. And the dinette is easily convertible to a double berth. The cabin paneling is natural wood with a lustrous sable-walnut finish, and full carpeting and headlining are standard equipment. Available with a single Chris-Craft 185 or 210-hp V8 engine, or with twin 185's; speeds up to 37 mph! Hardtop optional extra.

SPECIFICATIONS

Sleeping Capacity	4	Height from waterline (clearance)	8'10 1/4"
Length	27'0"	Weight (lbs. estimated w/cradle)	5,606 - 6,500
Beam	10'3"	Headroom	6'3"
Draft (single screw)	25 1/4"	Fuel Capacity, gallons (single screw)	48.7
Draft (twin screw)	22 1/4"	Fuel Capacity, gallons (twin screw)	80
Freeboard, forward	51 1/4"	Fresh-Water Capacity, gallons	14.6
Freeboard, aft	37 1/4"		

STANDARD EQUIPMENT

Alcohol Stove, recessed • Anchor Light • Bell, fog • Bow Pole and Pennant • Cabin Headlining • Carpeting • Chocks • Cleats • Deck Hatch, forward • Dinette converts to Double Bed • Dish Locker (enclosed) • Drawers (4) • Electric Lights—12-volt Electric Horn • Fire Extinguishers (2) • Foam Cushions and Mattresses, vinyl covered Fresh-Water System • Glass Rack • Handrails on cabin top • Handrails, aft deck • Ice Box • International Navigation Lights • Mast (anchor light) • Mirror in toilet room • Shipping Cradle • Enameled Galley Sink • Stern Pole and Ensign • Toilet • Ventilating Fly-bridge Windshield • Ventilators • Wardrobes • Wash Basin, fiberglass.



Forward view of bright cabin. Draperies are optional.



Galley. Recessed stove has cover for more counterspace.



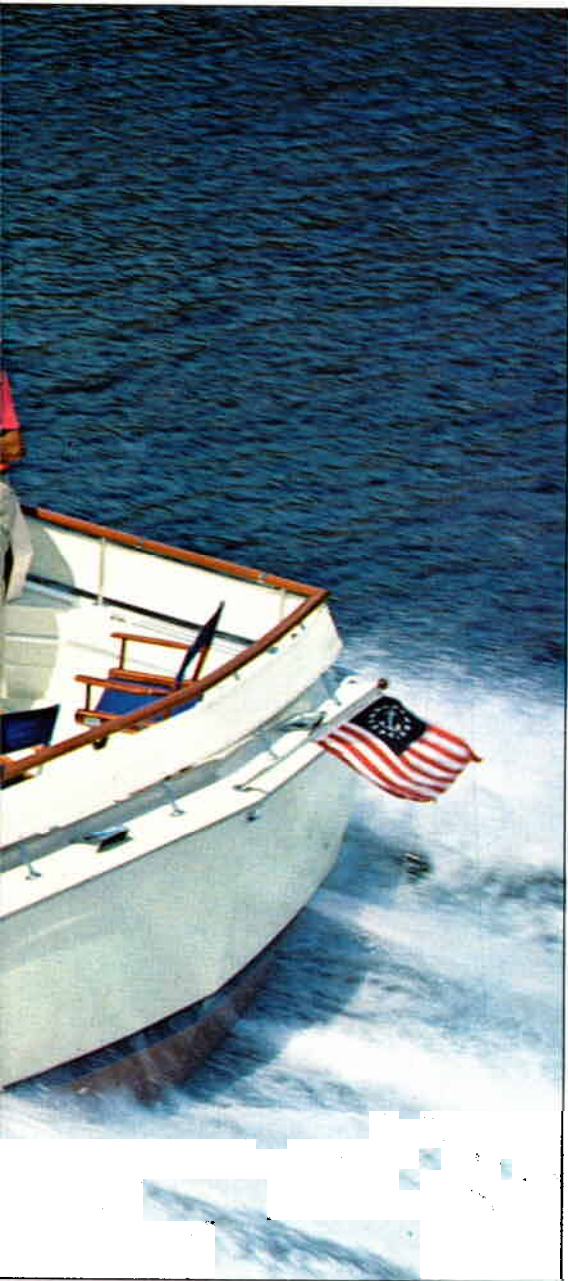


Fully equipped galley.

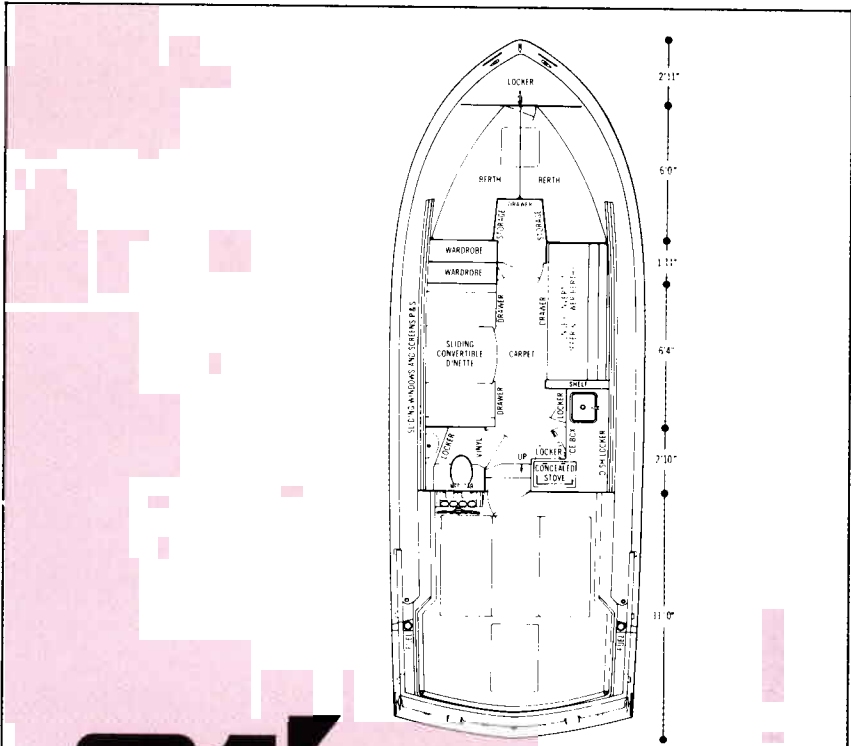
Lavatory. Note linen storage.

Hardtop, bow and side rails are optional.





Spacious interior has luxurious appointments.



31' commander

Not only is this 31-foot six-sleeper more spacious than other boats of its size, but the cabin layout shows the results of Chris-Craft's famous "space engineering," which arranges the cabin facilities in their most convenient places—without wasting a square inch. The private forward stateroom has storage beneath each twin berth, plus a wardrobe. In the main cabin, the dinette and lounge (both convert to berths) are opposite each other to make entertaining more convenient. An L-shaped galley makes meal preparation easy and keeps the ship's cook happy. There are drawers, lockers, and a wardrobe in the main cabin, and the lavatory has a locker under the vanity counter. Twin 185 or 210-hp V8's; speeds to 32 mph. Available with hardtop (extra).

SPECIFICATIONS

Sleeping Capacity.....6	Height from waterline (clearance).....9'11"—incl. anchor light
Length.....31'0"	Weight (lbs. estimated w/cradle).....8,175
Beam.....11'2½"	Headroom.....6'3¼"
Draft.....27¼"	Fuel Capacity, gallons.....100
Freeboard, forward.....54¼"	Fresh-Water Capacity, gallons.....25
Freeboard, aft.....38½"	

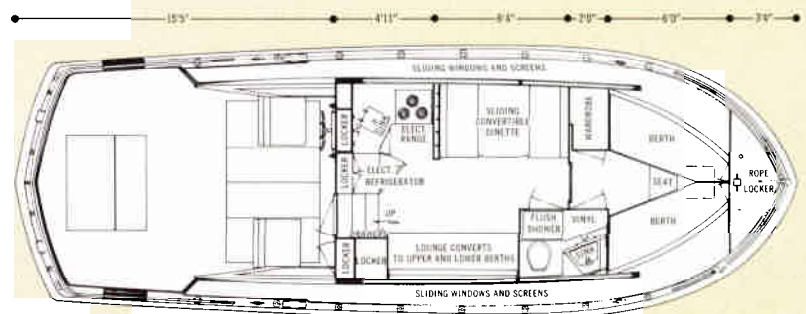
STANDARD EQUIPMENT

- Alcohol Stove, 2-burner • Anchor and Line • Anchor Light • Bell • Bow Pole and Pennant
- Carpeting • Chocks • Cleats • Deck Hatch, forward • Dinette (conv.) • Dish Locker • Dock Lines • Draperies • Electric Bilge Pump, automatic • Electric Horn • Fire Extinguishers
- Foam Cushions and Mattresses • Fresh-Water System • Handrails on cabin top • Handrails, aft deck • Helmsman Seat • Ice Box • International Navigation Lights • Life Preservers (6)
- Mast with Anchor Light • Medicine Cabinet with Mirror • Screens • Shipping Cradle
- Stainless Steel Galley Sink • Stern Pole and Ensign • Toilet • Wash Basin, fiberglass
- Weather Cloths • Windshield Wiper (1).

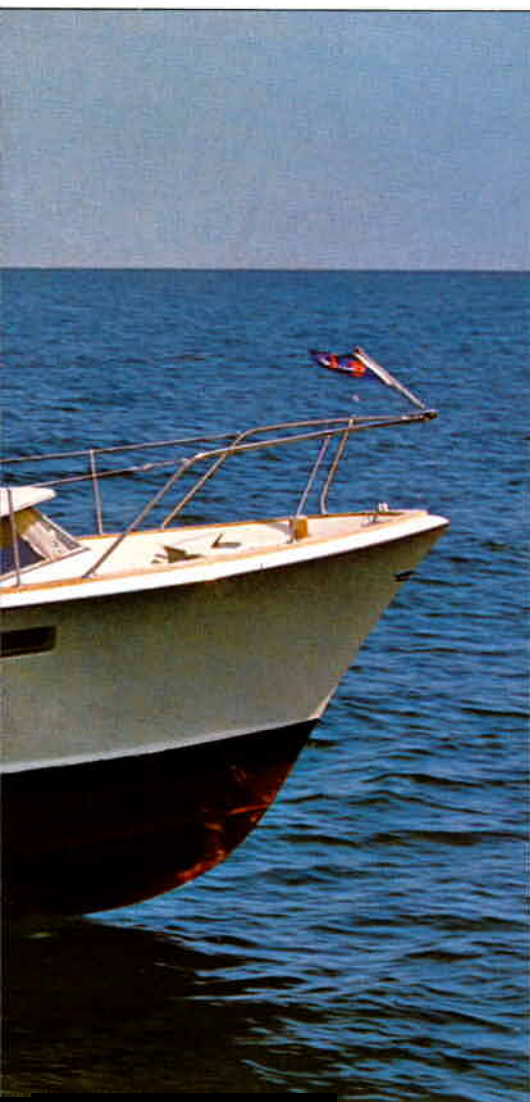


SPECIAL FEATURES FOUND ON ALL 38' COMMANDER HULLS

In addition to a sharp vee entry, deep, full-length keel, and longitudinal steps for lateral stability, the 38' Commander hulls have unique hullside foils which extend from stem to transom, sweeping outward to a width of six inches at the stern. Besides knocking down spray and keeping the cockpit dry, the foils conceal engine exhausts and other through-hull fittings on the undersides, so that exhaust fumes are swept away with the wake.



38' commander



Rich natural-wood finishes surround yacht-size accommodations.



All-electric galley with hot and cold water system.



Lavatory has electric toilet and shower.

This is the famous model that started a new era in quality fiberglass boat building. It's a generously proportioned six-sleeper with private forward stateroom, lavatory with shower (can be entered from stateroom or main cabin), hot and cold water system, convertible lounge and dinette, and plenty of storage in all areas. The cabin is fully paneled, with a rich walnut finish, and draperies, nylon carpeting, and headlining are standard. Other equipment included at no extra cost: helmsman and companion seats, dockside wiring, electric refrigerator, electric range and oven, bow and side rails, electric bilge pump, bilge blower, and windshield wipers. Twin 210 or 300-hp V8's or 258-hp diesels. Top speed is 31 mph. Available with Command bridge (extra).

SPECIFICATIONS

Sleeping Capacity	6	Headroom	6'4½"
Length	38'0"	Height from waterline	
Beam	13'0"	(clearance)	12'0" including mast
Draft	36"	Fuel Capacity, gallons	200
Freeboard, forward	62"	Fresh-Water Capacity, gallons	75
Freeboard, aft	50"	Forward, Side and Aft Decks	Fiberglass
Weight (lbs. est. w/cradle)	18,240-20,955	Cockpit Floor	Fiberglass

These items are standard equipment on all 38' models

Anchor and Line • Anchor Light • Bell • Bilge Blower • Bow Pole and Pennant • Carpeting
 Chocks • Cleats • Compass • Deck Hatch, forward, with Vent • Dock Lines • Draperies
 Electric Bilge Pump, automatic • Electric Horn • Electric Refrigerator 6.5 cu. ft. • Electric
 Range, 3-burner, with oven • Fire Extinguishers (2) • Foam Cushions and Mattresses • Hand-
 rails on cabin top • Handrails, bow and side deck • Hardtop with Ventilating Windshields and
 Sliding Sideshields • International Navigation Lights • Life Preservers • Mirror in lavatory
 Mooring Bitts • Mufflers • 115-volt Dockside Wiring • Radio Ground • Rope Deck Pipe
 Screens • Shipping Cradle • Shower • Stainless Steel Galley Sink • Stern Pole and Ensign
 Electric Toilet • Hot and Cold Water Pressure System.

Extra standard equipment, 38' Commander

Companion Seat • Handrails, aft deck
 Helmsman Seat • Mast and Yardarm • Weather Cloths • Windshield Wipers (2).



Sedan has wide cockpit and well-protected decks (all rails standard).



Sport Fisherman has all-fiberglass fishing bridge. Outriggers optional.



Deckhouse of Sedan showing handsome control station.



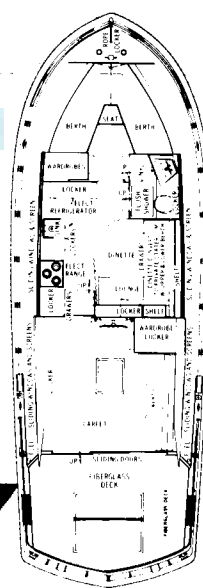
Large electric galley. Countertop is over 10' long.



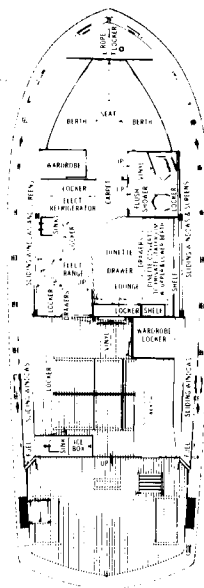
Dining and lounge area which converts to stateroom.



Sport Fisherman has uncluttered cockpit. No railings on coaming.



38' commander sedan



38' sport fisherman

This model has a forward stateroom similar to the 38' Commander, plus a unique lounge-dinette area in the main cabin which becomes a fully enclosed stateroom. Opposite is a large galley complete with electric refrigerator, range and oven. There's also an enclosed deckhouse (with a convertible lounge). Sliding deckhouse doors open wide into cockpit to provide an extra-large open-air entertainment center which extends from control station to transom. Command bridge optional extra.

This Commander was designed to make every inch as usable and comfortable as possible for the big-game fisherman, and it has all the features found on the most expensive sport fishing models. The private forward stateroom and main cabin are similar to the Sedan model, however the deckhouse is semi-enclosed, and there is a service bar with sink and ice box opposite the convertible lounge. The fishing bridge comes complete with dual controls, helmsman seat, full instrumentation, guard rails, and ladder.

Twin 210-hp or 300-hp V8's or 258-hp diesels. Top speed is 31 mph.

SPECIFICATIONS

	Sedan	Sport Fisherman
Sleeping Capacity.....	6	6
Length.....	38'0"	38'0"
Beam.....	13'0"	13'0"
Draft.....	36"	36"
Freeboard, forward.....	62"	62"
Freeboard, aft.....	50"	50"
Height from waterline (clearance).....	12 ¹ / ₂ "	13 ⁹ / ₁₆ "
Weight (lbs. estimated w/cradle).....	18,240 - 20,955	19,840 - 22,555
Headroom.....	6'4 ¹ / ₂ "	6'4 ¹ / ₂ "
Fuel Capacity, gallons.....	200	250
Fresh-Water Capacity, gallons.....	75	90 (75 w/Diesel)
Cockpit Floor.....	Fiberglass	Vinyl-covered

Standard equipment, both models See list on 38' Commander pages immediately preceding.

Extra standard equipment, 38' Sedan Mast and Yardarm • Windshield Wiper • Handrails, aft deck • Weather Cloths

Extra standard equipment, 38' Sport Fisherman Fishing Bridge with Dual Controls and Ladder Helmsman Seat on bridge • Service Bar in deckhouse with Icebox and Sink • Windshield Wiper

prove commander's superior fiberglass construction to yourself

Here are some ways that you can compare Chris-Craft's Commander hull with other hulls:

Sight down the length of the hull for imperfections. Notice that Commanders have none of the ripples, waves, or indentations you'll see on some other hulls. The smoothness is due to Chris-Craft's painstaking preparation of the molds, which are cleaned and polished to mirror-like perfection before molding begins. The many man-hours spent on preparation of the mold pay off with the finest fiberglass surfaces on the water.

Find out if the hull has been painted. Commander hulls have an outer layer of color impregnated, high quality gelcoat. They're never painted. Inferior gelcoats may necessitate painting at the factory, and will require periodic painting thereafter.

Pound the side of the hull in the amidships sections. If the side flexes under your fist, or if you hear a booming drum sound, the hullside isn't as strong as it could be. Commander hulls are solid. The strength in Commander hulls comes from the use of extra fiberglass reinforcement in the polyester lay-ups. Layer after layer of fiber-

glass roving or matting is applied until Chris-Craft's requirements for strength are achieved.

Fiberglass is a modern material which frees design from the restrictions imposed by more traditional boat building materials. Chris-Craft takes advantage of the new freedom to build new styling and performance features into its Commanders.



Hull of 38' Commander showing sharp vee entry, flared keel, speed stabilizers, hullside foil and vee transom.

WARRANTY

For the first 24 months or 400 hours of operation, whichever comes first, Chris-Craft Corporation will repair or replace, at its option, parts defective by reason of faulty workmanship or material returned to the selling dealer with transportation charges to the point of manufacture. For the first 12 months or 200 hours of operation, whichever comes first, Chris-Craft will pay the labor costs as determined by its schedule for removal and reinstallation of such parts. Chris-Craft does not warrant used boat or engine purchases, paints, varnishes, chrome, gelcoats, racing boats or engines, altered boats or parts or speeds.

There are many factory-installed accessories available for all Commander models. For a complete list and prices please see your Chris-Craft dealer or write the Chris-Craft factory.

NOTES PERTAINING TO ALL MODELS:

All prices are F.O.B. factory and include shipping cradle. Chris-Craft engines are installed unless otherwise specified by purchaser. Speeds shown herein were obtained either by actual tests or are estimates based on engineering calculations. The test is conducted over a certified course with fuel and water tanks two-thirds full, a driver only, and is averaged in two directions, with and against the wind and current. The stated speed is based on the maximum horsepower specified for each new boat at full throttle operation. Model lengths are stated to the exact foot. Prices and specifications contained in this literature are based on the latest product information available at the time of publication approval. The right is reserved to make changes at any time without notice in prices, colors, materials, equipment, specifications, and models and also to discontinue models. Equipment and accessories pictured but not included in the list of standard equipment items will be furnished at extra cost if available. Approved accessories for factory installation are available; for details see Accessory Price List. Irrespective of the place of manufacture the right is reserved to ship from any Chris-Craft factory. All orders accepted subject to prices prevailing at time of shipment. All boat weights shown in specifications are estimated shipping weights and include shipping cradle, etc.

All 1966 Commander models meet the Coast Guard regulations established for international navigation lights effective Sept. 1, 1965.

Chris-Craft commander
Pompano Beach, Florida Chris-Craft Corporation, 33061