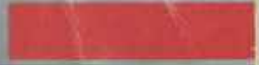


*Chris + Craft*



**CRUISERS**





America... a land of great diversity... unlimited opportunity... and common purpose.

A country whose history is told in a tapestry of heroic deeds and legendary figures.

Whether real or imaginary, American legends have set standards that others strive for and yet can never attain... for the American

legend is a special breed... stronger... faster... their lines more classic... their achievements incomparable.

An American legend needs no fanfare, no special introduction, for its name is its calling card... a name that is synonymous with greatness.

Since the day Chris-Craft built America's first powerboat, our name has been synonymous with just about every type of boat you can think of...

sportboats, cruisers, fish boats, Aqua-Home, sport decks.

And the legend continues... with the 1984 Chris-Crafts.

Ed McMahon





253 CATALINA MID-CABIN



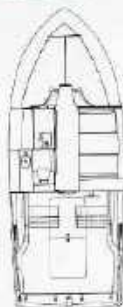
251 CATALINA EXPRESS



## 251 CATALINA EXPRESS / 253 CATALINA MID-CABIN

### 251 CATALINA EXPRESS

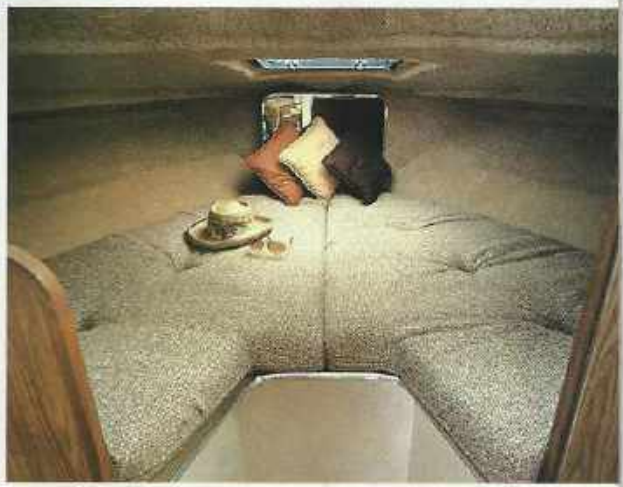
SLEEPING CAPACITY	4	4
LENGTH	25'4"	7.72 m
BEAM	9'9"	2.97 m
DRAFT	2'3"	69 cm
FREEBOARD FWD.	3'2 1/2"	98 cm
FREEBOARD AFT	2'6"	76 cm
HEIGHT FROM WATERLINE TO TOP OF WINDSHIELD (clearance)	7'6"	2.28 m
WEIGHT (dry)	4600 lbs	2087 kg
FUEL CAPACITY	75 gals	284 lt
FRESH WATER CAPACITY	25 gals	95 lt
INTERIOR COLOR	Brown	
POWER OPTIONS	1-230 Mercuriser I/B	



### 253 CATALINA MID CABIN

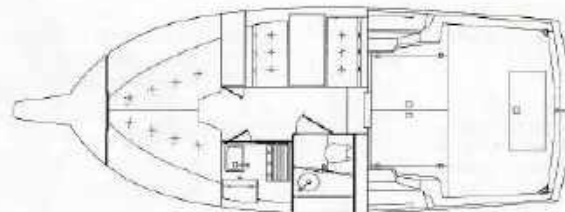
SLEEPING CAPACITY	6	6
LENGTH	25'4"	7.72 m
BEAM	9'9"	2.97 m
FREEBOARD FWD.	3'2 1/2"	98 cm
FREEBOARD AFT	2'6"	76 cm
HEIGHT FROM WATERLINE TO TOP OF WINDSHIELD (clearance)	7'6"	2.28 m
WEIGHT (dry)	4600 lbs	2087 kg
FUEL CAPACITY	75 gals	284 lt
FRESH WATER CAPACITY	25 gals	95 lt
INTERIOR COLOR	Brown	
POWER OPTIONS:	1-228 hp Mercuriser Sterndrive	





## 268 COMMANDER SPORT SEDAN

SLEEPING CAPACITY	4	4	POWER OPTIONS:
LENGTH	26'	7.92 m	2-230 hp Mercruiser I/B
BEAM	10' 3"	3.12 m	2-124 hp Volvo Diesels
DRAFT	2' 2"	66 cm	
FREEBOARD FWD.	3' 6"	1.07 m	
FREEBOARD AFT	3' 4 1/2"	1.03 m	
HEIGHT FROM WATERLINE TO TOP OF WINDSHIELD (clearance)	9' 9 1/2"		
WEIGHT (dry)	gas 6700 lbs	3136 kg	
	diesel 8400 lbs	3810 kg	
FUEL CAPACITY	125 gals	473 l	
FRESH WATER CAPACITY	25 gals	94.63 l	
INTERIOR COLOR	Brown		





## 280/281 CATALINA EXPRESS

### 280/281 CATALINA TWIN EXPRESS

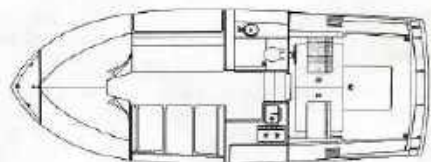
SLEEPING CAPACITY	6	6
LENGTH	28'10 1/2"	8.8 m
BEAM	10'9"	3.28 m
DRAFT	single 2'5"	74 cm
	twin 2'3"	69 cm
FREEBOARD FWD.	4'	1.22 m
FREEBOARD AFT	3'2"	69 cm
HEIGHT FROM WATERLINE TO TOP OF WINDSHIELD		
most lowered (clearance)	8'6"	2.59 m
WEIGHT (dry)	single 6300 lbs	2858 kg
	twin 7000 lbs	3175 kg
FUEL CAPACITY	single 100 gals	378 lt
	twin 125 gals	473 lt

FRESH WATER CAPACITY 25 gals 95 lt

INTERIOR COLOR Brown

#### POWER OPTIONS:

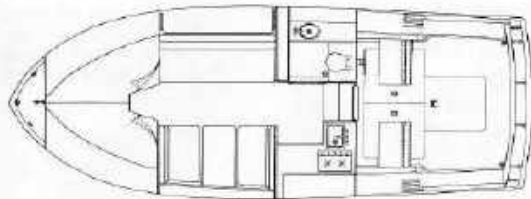
- 1-230 hp Mercruiser I/B
- 1-124 hp TAMD 40 Volvo Diesel
- 2-230 hp Mercruiser I/B





## 291 CATALINA BRIDGE

SLEEPING CAPACITY	6	6	POWER OPTIONS:
LENGTH	28'10 1/2"	8.8 m	2-230 hp Mercruiser I/B
BEAM	10'9"	3.28 m	
DRAFT	2'3"	69 cm	
FREEBOARD FWD.	3'10 1/4"	1.18 m	
FREEBOARD AFT	3'	91 cm	
HEIGHT FROM WATERLINE			
TO TOP OF ANCHOR LIGHT	11'10 1/4"	3.61 m	
(clearance) with mast lowered	10'10 1/4"	3.31 m	
WEIGHT (dry)	7800 lbs	3538 kg	
FUEL CAPACITY	125 gals	473 li	
FRESH WATER CAPACITY	25 gals	95 li	
INTERIOR COLOR	Brown		





## 315 COMMANDER SPORT SEDAN

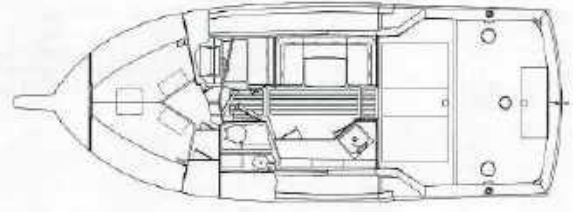
SLEEPING CAPACITY	4	4	POWER OPTIONS:
LENGTH	30'10"	9.40 m	2-250 hp Mercuriser I/B
BEAM	11'9"	3.58 m	2-340 hp Mercuriser I/B
DRAFT	2'6"	76 cm	2-205 hp GM Diesel, 8.2 liter
FREEBOARD FWD.	4'1 1/4"	1.25 m	
FREEBOARD AFT	3'4"	1.02 m	
HEIGHT FROM WATERLINE TO TOP OF WINDSHIELD (clearance)	9'5 1/2"	2.88 m	
WEIGHT (dry) est.	gas 12,000 lbs/5443 kg		
	diesel 12,128 lbs/5501 kg		
FUEL CAPACITY	250 gals	946 lt	
FRESH WATER CAPACITY	40 gals	151 lt	
INTERIOR COLOR	Brown		





## 316 COMMANDER SPORT SEDAN

SLEEPING CAPACITY	4	4	POWER OPTIONS:
LENGTH	30'10"	9.40 m	2-260 hp Mercruiser I/B
BEAM	11'9"	3.58 m	2-340 hp Mercruiser I/B
DRAFT	2'10"	76 cm	2-205 hp GM Diesel, 8.2 liter
FREEBOARD FWD.	4'7 1/2"		
FREEBOARD AFT	3'3 1/4"		
HEIGHT FROM WATERLINE TO TOP OF WINDSHIELD (clearance)	7'4 1/2"		
WEIGHT (dry) est.	11,400 lbs		
FUEL CAPACITY	250 gals		
FRESH WATER CAPACITY	40 gals		
INTERIOR COLOR	Brown		

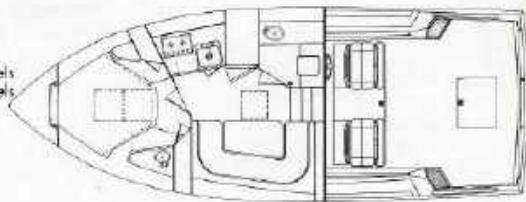




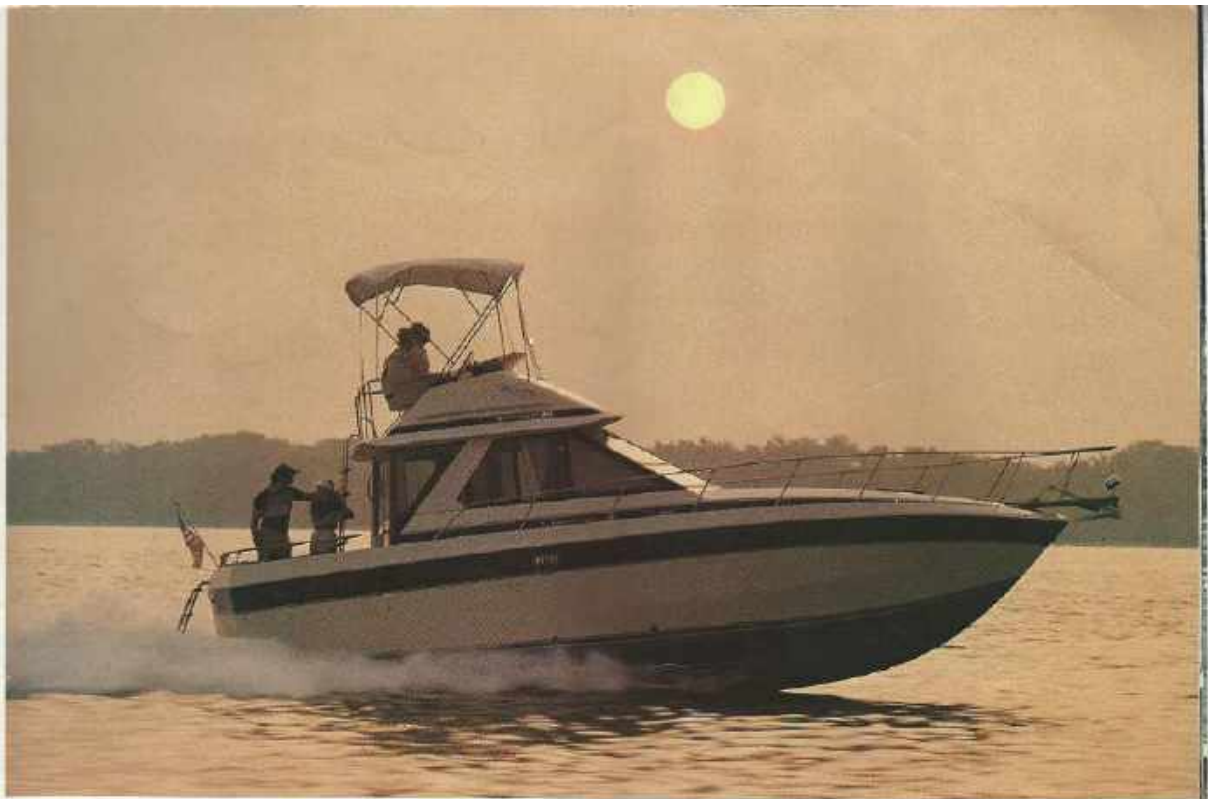


## 332 COMMANDER EXPRESS

SLEEPING CAPACITY	4	4	POWER OPTIONS:
LENGTH	33'0"	10.06 m	2-260 hp Mercruiser I/B
BEAM	12'4"	3.67 m	2-340 hp Mercruiser I/B
DRAFT	2'9"	84 cm	2-165 hp Volvo TAMD 40B Diesels
FREEBOARD FWD.	4'10"	1.5 m	2-230 hp Volvo TAMD 60C Diesels
FREEBOARD AFT	4'6"	1.4 m	
HEIGHT FROM WATERLINE			
TO TOP OF ANCHOR LIGHT	8'11 1/4"	2.72 m	
(clearance) with mast lowered	7'10 1/2"	2.40 m	
WEIGHT (dry)	gas 11,560 lbs/5255 kg		
	diesel 13,500 lbs/6136 kg		
FUEL CAPACITY	250 gals 946 lt		
FRESH WATER CAPACITY	50 gals 190 lt		
INTERIOR COLOR OPTIONS: Blue or Brown			

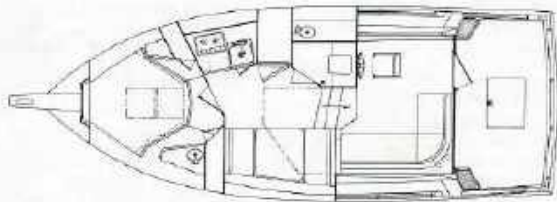


21-22  
30 top  
18°



## 333 COMMANDER SPORT SEDAN

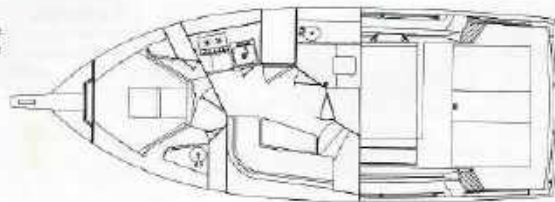
SLEEPING CAPACITY	4	d	POWER OPTIONS:
LENGTH	33'0"	10.06 m	2-260 hp Mercruiser I/B
BEAM	12'4"	3.67 m	2-340 hp Mercruiser I/B
DRAFT	2'9"	84 cm	2-230 hp Volvo TAMD 60C
FREEBOARD FWD.	4'10"	1.5 m	Diesels
FREEBOARD AFT	4'6"	1.4 m	
HEIGHT FROM WATERLINE			
TO TOP OF ANCHOR LIGHT	12'¾"	3.68 m	
(clearance) with mast lowered	11'7½"	3.54 m	
WEIGHT (dry)			
	gas	13,000 lbs/5909 kg	
	diesel	14,940 lbs/6791 kg	
FUEL CAPACITY	250 gals	946 lt	
FRESH WATER CAPACITY	50 gals	190 lt	
INTERIOR COLOR OPTIONS	Brown or Blue		

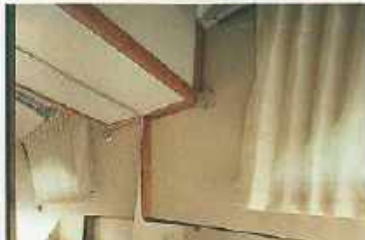




## 336 COMMANDER MID-CABIN

SLEEPING CAPACITY	6	6	POWER OPTIONS:
LENGTH	33'0"	10.06 m	2-260 hp Mercruiser V-Drive
BEAM	12'4"	3.67 m	2-340 hp Mercruiser V-Drive
DRAFT	2'9"	84 cm	
FREEBOARD FWD.	4'11½"	1.51 m	
FREEBOARD AFT	3'10"	1.17 m	
HEIGHT FROM WATERLINE			
TO TOP OF ANCHOR LIGHT	8'11½"	2.73 m	
(clearance) with mast lowered	7'10¾"	2.41 m	
WEIGHT (dry)	12,360 lbs	5607 kg	
FUEL CAPACITY	250 gals	946 lt	
FRESH WATER CAPACITY	50 gals	190 lt	
INTERIOR COLOR OPTIONS Blue or Brown			





## 337 COMMANDER

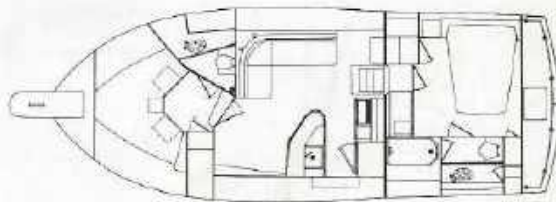
SLEEPING CAPACITY	4	4	POWER OPTIONS:
LENGTH	33'0"	10.06 m	2-260 hp Mercurier I/B
BEAM	12'4"	3.67 m	2-340 hp Mercurier I/B
DRAFT	3'0"		
FREEBOARD FWD.	4'6 1/2"		
FREEBOARD AFT	4'3 1/4"		
HEIGHT FROM WATERLINE TO TOP OF ANCHOR LIGHT (clearance)	12'5 1/2"		
WEIGHT [dry] est.	16,000 lbs		
FUEL CAPACITY	200 gals		
FRESH WATER CAPACITY	50 gals		
INTERIOR COLOR OPTIONS	Blue or Brown		





## 350 CATALINA DOUBLE CABIN

SLEEPING CAPACITY	4	4	POWER OPTIONS:
LENGTH	35'1"	10.69 m	2-235 hp Chris-Craft I/B
BEAM	13'1"	3.99 m	
DRAFT	2'9 1/2"	85 cm	
FREEBOARD FWD.	5'7 1/2"	1.71 m	
FREEBOARD AFT	3'9 1/2"	1.16 m	
HEIGHT FROM WATERLINE TO TOP OF ANCHOR LIGHT	12'3"	3.73 m	
(clearance) with mast lowered	10'8"	3.25 m	
WEIGHT (dry)	17,229 lbs	7815 kg	
FUEL CAPACITY	250 gals	946 lt	
FRESH WATER CAPACITY	100 gals	379 lt	
INTERIOR COLOR OPTIONS	Blue or Brown		





## 360 COMMANDER SPORT SEDAN

SLEEPING CAPACITY	4	4	POWER OPTIONS:
LENGTH	36'	10.97 m	2-340 hp Mercruisers I/B
BEAM	13'	3.96 m	2-300 hp 3208T Cat Diesels
DRAFT	3'2"	97 cm	2-320 hp VT555 Cum. Diesels
FREEBOARD FWD.	4'9 1/2"	1.46 m	
FREEBOARD AFT	3'5 3/4"	1.06 m	
HEIGHT FROM WATERLINE			
TO TOP OF ANCHOR LIGHT	12'6 3/4"	3.83 m	
(clearance) with mast lowered	11'10 1/2"	3.62 m	
WEIGHT (dry)	gas 22,600 lbs	10,251 kg	
	diesel 25,300 lbs	11,476 kg	
FUEL CAPACITY	400 gals	1514 lt	
FRESH WATER CAPACITY	65 gals	246 lt	
INTERIOR COLOR OPTIONS	Blue or Brown		





## 365 COMMANDER SPORT FISHERMAN

SLEEPING CAPACITY	4	4
LENGTH	36'	10.97 m
BEAM	13'	3.96 m
DRAFT	2'6 1/2"	
FREEBOARD FWD.	5'6"	1.68 m
FREEBOARD AFT	3'8"	1.13 m
HEIGHT FROM WATERLINE TO TOP OF WINDSHIELD (clearance)	9'6"	
WEIGHT (dry)	20,500 lbs	
FUEL CAPACITY	400 gals	
FRESH WATER CAPACITY	65 gals	
INTERIOR COLOR OPTIONS	Blue or Brown	

POWER OPTIONS:  
 2-340 hp Mercruiser I/B  
 2-300 hp 320BT Cat Diesels  
 2-320 hp VT555 Cum. Diesels





## 380 CORINTHIAN DOUBLE CABIN

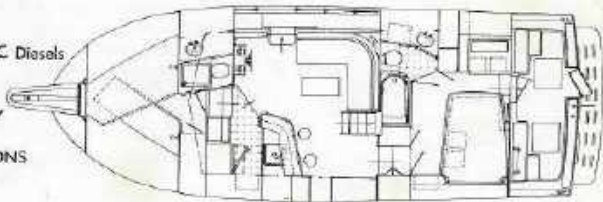
SLEEPING CAPACITY	4	4
LENGTH	38'	11.58 m
BEAM	14'	4.26 m
DRAFT	2'11 1/2"	90 cm
FREEBOARD FWD.	5'8"	1.75 m
FREEBOARD AFT	3'11"	1.19 m
HEIGHT FROM WATERLINE		
TO TOP OF ANCHOR LIGHT	12'10"	3.91 m
(clearance) with mast lowered	12'7 1/2"	3.69 m
WEIGHT (dry)		
gas	22,500 lbs	10,205 kg
diesel	24,500 lbs	11,136 kg

POWER OPTIONS:  
 2-340 hp Mercruiser I/B  
 2-230 hp Volvo TAMD 60C Diesels

FUEL CAPACITY  
 410 gals 1551 l

FRESH WATER CAPACITY  
 65 gals 246 l

INTERIOR COLOR OPTIONS  
 Blue or Brown







## 381 CATALINA DOUBLE CABIN

SLEEPING CAPACITY	4	4
LENGTH	38'	11.58 m
BEAM	14'	4.26 m
DRAFT	2'11 1/2"	90 cm
FREEBOARD FWD.	5'8"	1.75 m
FREEBOARD AFT	3'11"	1.19 m
HEIGHT FROM WATERLINE TO TOP OF ANCHOR LIGHT	10'7"	4.55 m
(clearance) with mast lowered	11'7"	3.94 m
WEIGHT (dry)	gas 21,600 lbs 9798 kg	
	diesel 23,600 lbs 10,704 kg	
FUEL CAPACITY	410 gals 1551 lt	
FRESH WATER CAPACITY	65 gals 245 lt	

INTERIOR COLOR OPTIONS Blue or Brown  
 POWER OPTIONS:  
 2-340 hp Mercruiser V/B  
 2-230 hp Volvo TAMD 60C  
 Diesels





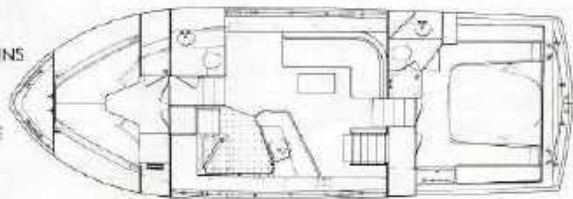
## 410 COMMANDER YACHT

SLEEPING CAPACITY	6	6
LENGTH	41'	12.5 m
BEAM	14'	4.26 m
DRAFT	3'3 1/2"	1 m
FREEBOARD FWD.	6'6 1/2"	2 m
FREEBOARD AFT	5'6"	1.68 m
HEIGHT FROM WATERLINE TO TOP OF ANCHOR LIGHT	16'10"	5.13 m
TO TOP OF COMMAND BRIDGE	15'10"	4.8 m
(clearance) with mast lowered	12'9 1/2"	3.9 m
WEIGHT (dry)	gas 26,565 lbs	12,049 kg
	diesel 29,213 lbs	13,250 kg
FUEL CAPACITY	350 gals	1324 lt

FRESH WATER CAPACITY  
100 gals 379 lt

INTERIOR COLOR OPTIONS  
Blue or Brown

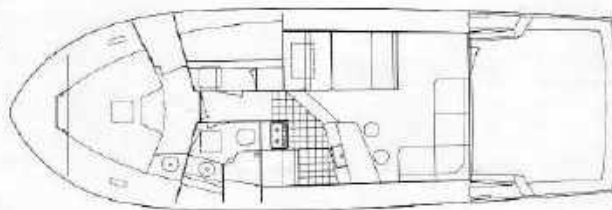
POWER OPTIONS:  
2-340 hp Mercruiser I/B  
2-286 hp Volvo TAMD 70E  
Diesel





## 421 COMMANDER CONVERTIBLE

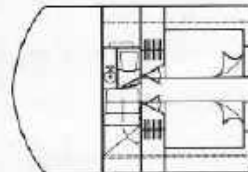
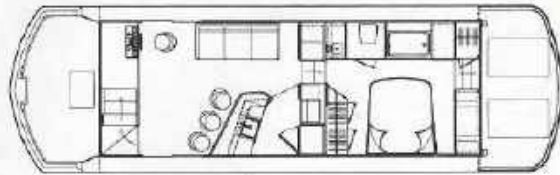
SLEEPING CAPACITY	6	6	POWER OPTIONS:
LENGTH	42'	12.9 m	2-465 hp GM 6V92TA
BEAM	14'	4.26 m	Diesels
DRAFT	3'11"	1.2 m	
FREEBOARD FWD.	6'4 1/2"	1.95 m	
FREEBOARD AFT	3'11"	1.2 m	
HEIGHT FROM WATERLINE TO TOP OF WINDSHIELD (clearance)	13'2"	4.01 m	
WEIGHT (dry)	34,750 lbs	15,763 kg	
FUEL CAPACITY	525 gals	1987 lt	
FRESH WATER CAPACITY	145 gals	549 lt	
INTERIOR COLOR OPTIONS	Blue or Brown		





## 46' AQUA-HOME

SLEEPING CAPACITY	8	8	POWER OPTIONS:
LENGTH	46'	14.02 m	2-260 hp Mercruiser I/B
BEAM	14'	4.26 m	2-260 hp Mercruiser Stern
DRAFT	36"	92 cm	Drives
FREEBOARD FWD.	39"	99 cm	2-340 hp Mercruiser I/B
FREEBOARD AFT	39"	99 cm	2-135 hp Perkins Diesels
HEIGHT FROM WATERLINE TO TOP OF ANCHOR LIGHT	14'3"	4.34 m	
(clearance) to top of bridge	12'0"	3.65 m	
WEIGHT (dry) est.	23,700 lbs; 10,750 kg		
FUEL CAPACITY	262 gals. 991 lt		
FRESH WATER CAPACITY	150 gals. 570 lt		
INTERIOR COLOR	Blue or Brown		



**ALL CHRIS-CRAFT  
CRUISERS FEATURE AS  
STANDARD EQUIPMENT:**

**General:**  
Bimini w/cover & box  
Blower, bilge  
Cleat, mooring  
Engine instrumentation:  
voltage, oil pressure,  
water temperature and  
tachometer  
Fuel tank(s), welded aluminum  
Horn  
Meter(s), engine hour  
Mirror(s)  
Muffler(s)  
Propeller(s), bronze  
Pump(s), bilge  
Rudder(s), bronze  
Seacock(s), engine water  
take on at thru-hull  
fitting below waterline  
Shells, stainless steel  
(inboard model)  
Switch, battery, disconnect  
or paralleling  
Valve, fuel shutoff  
Vent, fuel, screened  
Electrical:  
International  
navigation lighting  
Lighting, interior 12V  
**Interior, General:**  
Berth, w/mattress,  
upholstered  
Carpeting

**251 CATALINA EXPRESS**

**General:**  
Bow rail  
Chocks, P & S  
Companionway door, sliding  
Cradle, shipping  
Drink holders  
Hatch, forward deck,  
Lexus w/covers  
Pole & flag, stern  
Rais & stanchions, aft &  
quarter deck  
Seat, grab, cabin top  
Storage, cockpit  
Windshield, side vented

**Electrical:**

Fused wiring system, 12 volt  
**Interior, General:**  
Dinette, convertible  
Glass rack  
Ice box, 4 cu. ft.  
Lockers  
Screens, cabin windows, P & S  
Sink, stainless steel, wingtip  
faucet (manual pump),  
cold water  
Stove, 2-burner, alcohol  
Tellt, recirculating,  
manual, wideblade discharge

**252 CATALINA MID CABIN**

**General:**  
Bow rail  
Chocks, P & S  
Companionway door, hinged  
Cradle, shipping  
Drink holders  
Hatch, forward deck,  
Lexus w/covers  
Pole & flag, stern  
Rais & stanchions, aft &  
quarter deck  
Seat, grab, cabin top  
Windshield, side vented

**Electrical:**

Fused wiring system, 12 volt  
**Interior, General:**  
Cabin, mod. w/mattress  
& window  
Dinette, convertible  
Glass rack  
Ice box, 4 cu. ft.  
Lazaret  
Screens, cabin windows, P & S  
Sink, stainless steel,  
wingtip faucet (manual  
pump), cold water  
Stove, 2-burner, alcohol  
Tellt, recirculating,  
manual, wideblade discharge

**268 COMMANDER  
SPORT SEDAN**

**General:**  
Bow rail  
Companionway door, sliding  
Covering boards, teak, aft  
Cradle, shipping  
Hatch, forward deck,  
Lexus w/covers

Pole & flag, stern  
Seat, helmman, bench type  
Windscreen, Command Bridge

**Electrical:**

Fused wiring system, 12 volt  
**Interior, General:**  
Dinette, convertible  
Ice box  
Lockers  
Sink, stainless steel,  
wingtip faucet (manual  
pump), cold water,  
galley & head  
Stove, 2-burner, alcohol  
Tellt, recirculating,  
manual, wideblade discharge

**280/281 CATALINA  
EXPRESS**

**General:**  
Bow rail  
Chocks, P & S  
Companionway door, sliding  
Cradle, shipping  
Drink holders  
Hatch, forward deck,  
Lexus w/covers  
Pole and flag, stern  
Rais & stanchions, aft &  
quarter deck, teak  
Rais, grab, cabin top  
Storage, cockpit  
Windshield, side vented

**Electrical:**

Fused wiring system, 12 volt  
**Interior, General:**  
Dinette, convertible  
Ice box  
Lockers  
Screens, cabin windows, P & S  
Sink, stainless steel,  
wingtip faucet (manual  
pump), cold water  
Sink, plastic, head  
Stove, 2-burner, alcohol  
Tellt, recirculating,  
manual wideblade discharge

**291 CATALINA BRIDGE**

**General:**  
Bow rail  
Bridge including engine  
instrumentation  
Chocks, P & S  
Companionway door, sliding  
Cradle, shipping  
Drink holders  
Hatch, forward deck,  
Horn  
Lexus w/covers  
Ladder  
Pole and flag, stern  
Rais & stanchions, aft &  
quarter deck, teak  
Rais, grab, cabin top  
Storage, cockpit  
Trim tabs  
Windshield, side vented

**Electrical:**

Fused wiring system, 12 volt  
**Interior, General:**  
Dinette, convertible  
Ice box  
Lockers  
Screens, cabin windows, P & S  
Sink, stainless steel,  
wingtip faucet (manual  
pump), cold water  
Sink, plastic, head  
Stove, 2-burner, alcohol  
Tellt, recirculating,  
manual wideblade discharge

**315 COMMANDER  
SPORT SEDAN**

**General:**  
Bonding system, copper  
Bottom paint, anti-fouling  
Bow pulpit, teak  
Bow rail, stainless steel  
Cockpit safety rails  
Command Bridge  
including:  
Engine instrumentation:  
tachometers, water  
temperature, oil  
pressure, volt/amps,  
voltmeter  
Fused switch panel, 12V  
ladder, handrail &  
grab rail, stainless steel  
Seat, helmman, bench type  
Seat, forward facing,  
w/cushions  
Windshield, plexiglas  
Fuel equalizer valve  
Hatch on forward deck,  
smoked Lexan, w/covers  
Teak covering boards, aft  
Trim tabs

**316 COMMANDER  
SPORT FISHERMAN**

**General:**  
Bonding system, copper  
Bottom paint, anti-fouling  
Bow pulpit, teak  
Bow rail, stainless steel  
Cockpit safety rails,  
stainless steel  
Full engine instrumen-  
tation, including:  
tachometers, water  
temperature, oil  
pressure, volt/amps,  
voltmeter  
Fused switch panel, 12V  
Seat, helmman  
Fuel equalizer valve  
Hatch on forward deck,  
smoked Lexan, w/covers  
Teak covering boards, aft  
Windshield w/cushions  
**Interior, General:**  
V-berth, forward  
Dinette, convertible,  
w/irremovable cushions  
Fresh water system, 12V,  
cold only  
Refrigerator, 12V-115V  
Shower, with electric  
sump pump, 12V, cold only  
Sink, stainless steel  
Stove, 2-burner,  
alcohol/electric  
Tellt, recirculating,  
manual, wideblade discharge

Windshield, cabin side,  
wing w/cushions  
Window, fixed, and  
plexiglas door, aft  
bulkhead

**Electrical:**

Wiring, dockside (1), 115V  
AC 30 amp inlet (1) 50  
ship to shore cable &  
cabin outlets, circuit  
breaker panel  
**Interior, General:**  
V-berth, forward  
w/flag privacy door  
Dinette, convertible  
Dropout windshield  
privacy cover  
Fresh water system, 12V,  
cold only  
Refrigerator, 12V-115V  
Sink, stainless steel  
Stove, 2-burner, alcohol/  
electric, 12V  
Tellt, recirculating,  
manual wideblade discharge

**318 COMMANDER  
SPORT FISHERMAN**

**General:**  
Bonding system, copper  
Bottom paint, anti-fouling  
Bow pulpit, teak  
Bow rail, stainless steel  
Cockpit safety rails,  
stainless steel  
Full engine instrumen-  
tation, including:  
tachometers, water  
temperature, oil  
pressure, volt/amps,  
voltmeter  
Fused switch panel, 12V  
Seat, helmman  
Fuel equalizer valve  
Hatch on forward deck,  
smoked Lexan, w/covers  
Teak covering boards, aft  
Windshield w/cushions  
**Interior, General:**  
V-berth, forward  
Dinette, convertible,  
w/irremovable cushions  
Fresh water system, 12V,  
cold only  
Hood, full standing  
icebox  
Sink, stainless steel  
Stove, 2-burner alcohol  
Tellt, recirculating,  
manual wideblade discharge

**332 COMMANDER  
EXPRESS**

**General:**  
Bonding system, copper  
Bottom paint, anti-fouling  
Bow pulpit, teak  
Bow rail, stainless steel  
Compass, 3 1/2", lighted  
fuel equalizer valves  
Hatch on forward deck,  
smoked Lexan, w/covers  
Helm and companion  
seats w/cushion  
Helm station, w/cushions  
Instrumentation and  
control switches  
Top, folding, white curtains  
Trim tabs, stainless steel  
Windshield, w/ventilation panels  
Windshield grab rail, teak,  
covered entire upper surface

**Electrical:**

Fused instrument panel  
Wiring, dockside (1), 115V  
AC 30 amp inlet  
starboard, including (1)  
50 ship to shore cable  
& cabin outlets, circuit  
breaker panel  
**Interior, General:**  
Covers, berth  
Dinette, convertible  
Dropouts  
Fresh water system, 12V,  
cold only  
Mid-cabin w/mattress  
Refrigerator, 12V-115V  
Shower, with electric  
sump pump, 12V, cold only  
Sink, stainless steel  
Stove, 2-burner,  
alcohol/electric  
Tellt, recirculating,  
manual, wideblade discharge

**333 COMMANDER  
SPORT SEDAN**

**General:**  
Bonding system, copper  
Bottom paint, anti-fouling  
Bow pulpit, teak  
Bow rail, all welded  
stainless steel  
Command Bridge,  
including:  
Engine instrumentation:  
tachometer, water  
temperature, oil  
pressure, volt/amps,  
volt/amps, compass,  
3 1/2", lighted  
Ladder and handrails  
Seat, helm  
Windscreen, plexiglas  
Drink holders  
Fuel equalizer valve  
Fused switch panel, 12V  
Hatch on forward deck,  
smoked Lexan, w/covers  
Trim tabs, stainless steel  
Windshield,  
ventilation side shales,  
w/cushions  
Windscreen  
Windshield wipers  
**Electrical:**  
Wiring, dockside (1), 115V  
AC 30 amp inlet,  
starboard, including (1)  
50 ship to shore cable  
& cabin outlets, circuit  
breaker panel  
**Interior, General:**  
Covers, berth  
Dinette, convertible  
Dropouts  
Fresh water system, 12V,  
cold only  
Refrigerator, 12V-115V,  
shower, with electric  
sump pump, 12V  
Sink, stainless steel  
Stove, 2-burner,  
alcohol/electric  
Tellt, recirculating,  
manual, wideblade discharge

Bonding system, copper  
Bottom paint, anti-fouling  
Bow pulpit, teak  
Bow rail, all welded  
stainless steel  
Command Bridge,  
including:  
Engine instrumentation:  
tachometer, water  
temperature, oil  
pressure, volt/amps,  
volt/amps, compass,  
3 1/2", lighted  
Ladder and handrails  
Seat, helm, bench type  
Windscreen, plexiglas  
Controls, at lower helm  
station including:  
full instrumentation,  
control switches, and  
fuel-mounted engine  
controls  
Drink holders  
Fuel equalizer valve  
Fused switch panel, 12V  
Hatch on forward deck,  
smoked Lexan, w/covers  
Trim tabs, stainless steel  
Windshield,  
ventilation side shales,  
w/cushions  
Windscreen  
Windshield wipers

**Electrical:**

Wiring, dockside (1), 115V  
AC 30 amp inlet,  
starboard, including (1)  
50 ship to shore cable  
& cabin outlets, circuit  
breaker panel  
**Interior, General:**  
Covers, berth  
Dinette, convertible  
Dropouts  
Fresh water system, 12V,  
cold only  
Refrigerator, 12V-115V,  
shower, with electric  
sump pump, 12V  
Sink, stainless steel  
Stove, 2-burner,  
alcohol/electric  
Tellt, recirculating,  
manual, wideblade discharge

**336 COMMANDER  
MID CABIN**

**General:**  
Bonding system, copper  
Bottom paint, anti-fouling  
Bow pulpit, teak  
Bow rail, stainless steel  
Compass, 3 1/2", lighted  
fuel equalizer valves  
Hatch on forward deck,  
smoked Lexan, w/covers  
Helm and companion  
seats w/cushion  
Helm station,  
with complete  
instrumentation and  
control switches  
Top, folding, white curtains  
Trim tabs, stainless steel  
Windshield, w/ventilation panels  
Windshield grab rail,  
teak, covered entire  
upper surface  
**Electrical:**  
Fused instrument panel  
Wiring, dockside (1), 115V  
AC 30 AMP inlet  
starboard, including (1)  
50 ship to shore cable  
& cabin outlets, circuit  
breaker panel  
**Interior, General:**  
Covers, berth  
Dinette, convertible  
Dropouts  
Fresh water system, 12V,  
cold only  
Mid-cabin w/mattress  
Refrigerator, 12V-115V  
Shower, with electric  
sump pump, 12V, cold only  
Sink, stainless steel  
Stove, 2-burner,  
alcohol/electric  
Tellt, recirculating,  
manual, wideblade discharge

**337 COMMANDER  
DOUBLES CABIN**

**General:**  
Bonding system, copper  
Bottom paint, anti-fouling  
Bow pulpit, teak  
Bow rail, all welded  
stainless steel  
Command Bridge,  
including:  
Engine instrumentation:  
tachometer, water  
temperature, oil  
pressure, volt/amps,  
volt/amps, compass,  
3 1/2", lighted  
Ladder and handrails  
Seat, helm, bench type  
Windscreen, plexiglas  
Controls, at lower helm  
station including:  
full instrumentation,  
control switches, and  
fuel-mounted engine  
controls  
Drink holders  
Fuel equalizer valve  
Fused switch panel, 12V  
Hatch on forward deck,  
smoked Lexan, w/covers  
Trim tabs, stainless steel  
Windshield,  
ventilation side shales,  
w/cushions  
Windscreen  
Windshield wipers  
**Electrical:**  
Wiring, dockside (1), 115V  
AC 30 amp inlet,  
starboard, including (1)  
50 ship to shore cable  
& cabin outlets, circuit  
breaker panel  
**Interior, General:**  
Covers, berth  
Dinette, convertible  
Dropouts  
Fresh water system, 12V,  
cold only  
Mid-cabin w/mattress  
Refrigerator, 12V-115V  
Shower, with electric  
sump pump, 12V, cold only  
Sink, stainless steel  
Stove, 2-burner,  
alcohol/electric  
Tellt, recirculating,  
manual, wideblade discharge

including:  
Engine instrumentation:  
tachometer, water  
temperature, oil  
pressure, volt/amps,  
volt/amps, compass,  
3 1/2", lighted  
Ladder and handrails  
Seat, helm  
Windscreen, plexiglas  
Drink holders  
Fuel equalizer valve  
Fused switch panel, 12V  
Hatch on forward deck,  
smoked Lexan, w/covers  
Trim tabs, stainless steel  
Water pressure system,  
hot & cold, 115V,  
w/whar heater

**Electrical:**

Wiring, dockside (1), 115V  
AC 30 amp inlet,  
including (1) 50 amp  
to shore cable & cabin  
outlets, circuit breaker panel  
**Interior, General:**  
Covers, berth  
Dinette  
Refrigerator, 12V-115V  
Shower, with electric  
sump pump, 12V, forward  
Sink, stainless steel  
Stove, 2-burner,  
alcohol/electric  
Tellt, recirculating,  
forward, manual,  
wideblade discharge

**350 CATALINA  
DOUBLE CABIN**

**General:**  
Anchor, chocked, w/line  
& deck pipe  
Bottom paint, anti-fouling  
Bridge & rudder,  
including:  
Drink holder  
Engine instrumentation:  
tachometer, water  
temperature, oil  
pressure, volt/amps  
Helm seat  
Pole, stainless steel  
Weathercloths  
Windshield, 2-section  
opening  
Windshield wipers (2)  
Chocks, P & S  
Fuel equalizer valves  
Hatch, forward deck,  
Lexus w/covers  
Horn  
Rais & stanchions, aft &  
quarter deck  
Seat, grab, cabin top  
Storage, cockpit  
Windshield, side vented

**Electrical:**

Fused wiring system, 12 volt  
**Interior, General:**  
Covers, berth  
Dinette, convertible  
Dropouts  
Fresh water system, 12V,  
cold only  
Refrigerator, 12V-115V,  
shower, with electric  
sump pump, 12V  
Sink, stainless steel  
Stove, 2-burner,  
alcohol/electric  
Tellt, recirculating,  
manual, wideblade discharge

**353 COMMANDER  
SPORT SEDAN**

**General:**  
Anchor, w/line and deck pipe  
Bottom paint, anti-fouling  
Bow pulpit, teak  
Bow rail, all welded  
stainless steel  
Command Bridge,  
including:  
Engine instrumentation:  
tachometer, water  
temperature, oil  
pressure, volt/amps,  
volt/amps, compass,  
3 1/2", lighted  
Hour meter  
Horn  
Lexus w/covers  
Ladder and handrails  
Seat, helm, bench type  
Windscreen, plexiglas  
Controls, at lower helm  
station including:  
full instrumentation,  
control switches, and  
fuel-mounted engine  
controls  
Drink holders  
Fuel equalizer valve  
Fused switch panel, 12V  
Hatch on forward deck,  
smoked Lexan, w/covers  
Trim tabs, stainless steel  
Windshield,  
ventilation side shales,  
w/cushions  
Windscreen  
Windshield wipers  
**Electrical:**  
Wiring, dockside (1), 115V  
AC 30 amp inlet,  
starboard, including (1)  
50 ship to shore cable  
& cabin outlets, circuit  
breaker panel  
**Interior, General:**  
Covers, berth  
Dinette, convertible  
Dropouts  
Fresh water system, 12V,  
cold only  
Mid-cabin w/mattress  
Refrigerator, 12V-115V  
Shower, with electric  
sump pump, 12V, cold only  
Sink, stainless steel  
Stove, 2-burner,  
alcohol/electric  
Tellt, recirculating,  
manual, wideblade discharge

**356 COMMANDER  
SPORT SEDAN**

**General:**  
Anchor, w/line and deck pipe  
Bottom paint, anti-fouling  
Bow pulpit, teak  
Bow rail, all welded  
stainless steel  
Command Bridge,  
including:  
Engine instrumentation:  
tachometer, water  
temperature, oil  
pressure, volt/amps,  
volt/amps, compass,  
3 1/2", lighted  
Hour meter  
Horn  
Lexus w/covers  
Ladder and handrails  
Seat, helm, bench type  
Windscreen, plexiglas  
Controls, at lower helm  
station including:  
full instrumentation,  
control switches, and  
fuel-mounted engine  
controls  
Drink holders  
Fuel equalizer valve  
Fused switch panel, 12V  
Hatch on forward deck,  
smoked Lexan, w/covers  
Trim tabs, stainless steel  
Windshield,  
ventilation side shales,  
w/cushions  
Windscreen  
Windshield wipers  
**Electrical:**  
Wiring, dockside (1), 115V  
AC 30 amp inlet,  
starboard, including (1)  
50 ship to shore cable  
& cabin outlets, circuit  
breaker panel  
**Interior, General:**  
Covers, berth  
Dinette, convertible  
Dropouts  
Fresh water system, 12V,  
cold only  
Mid-cabin w/mattress  
Refrigerator, 12V-115V  
Shower, with electric  
sump pump, 12V, cold only  
Sink, stainless steel  
Stove, 2-burner,  
alcohol/electric  
Tellt, recirculating,  
manual, wideblade discharge

**359 COMMANDER  
SPORT SEDAN**

**General:**  
Anchor, w/line and deck pipe  
Bottom paint, anti-fouling  
Bow pulpit, teak  
Bow rail, all welded  
stainless steel  
Command Bridge,  
including:  
Engine instrumentation:  
tachometer, water  
temperature, oil  
pressure, volt/amps,  
volt/amps, compass,  
3 1/2", lighted  
Hour meter  
Horn  
Lexus w/covers  
Ladder and handrails  
Seat, helm, bench type  
Windscreen, plexiglas  
Controls, at lower helm  
station including:  
full instrumentation,  
control switches, and  
fuel-mounted engine  
controls  
Drink holders  
Fuel equalizer valve  
Fused switch panel, 12V  
Hatch on forward deck,  
smoked Lexan, w/covers  
Trim tabs, stainless steel  
Windshield,  
ventilation side shales,  
w/cushions  
Windscreen  
Windshield wipers  
**Electrical:**  
Wiring, dockside (1), 115V  
AC 30 amp inlet,  
starboard, including (1)  
50 ship to shore cable  
& cabin outlets, circuit  
breaker panel  
**Interior, General:**  
Covers, berth  
Dinette, convertible  
Dropouts  
Fresh water system, 12V,  
cold only  
Mid-cabin w/mattress  
Refrigerator, 12V-115V  
Shower, with electric  
sump pump, 12V, cold only  
Sink, stainless steel  
Stove, 2-burner,  
alcohol/electric  
Tellt, recirculating,  
manual, wideblade discharge

**360 COMMANDER  
SPORT SEDAN**

**General:**  
Anchor, w/line and deck pipe  
Bottom paint, anti-fouling  
Bow pulpit, teak  
Bow rail, all welded  
stainless steel  
Command Bridge,  
including:  
Engine instrumentation:  
tachometer, water  
temperature, oil  
pressure, volt/amps,  
volt/amps, compass,  
3 1/2", lighted  
Hour meter  
Horn  
Lexus w/covers  
Ladder and handrails  
Seat, helm, bench type  
Windscreen, plexiglas  
Controls, at lower helm  
station including:  
full instrumentation,  
control switches, and  
fuel-mounted engine  
controls  
Drink holders  
Fuel equalizer valve  
Fused switch panel, 12V  
Hatch on forward deck,  
smoked Lexan, w/covers  
Trim tabs, stainless steel  
Windshield,  
ventilation side shales,  
w/cushions  
Windscreen  
Windshield wipers  
**Electrical:**  
Wiring, dockside (1), 115V  
AC 30 amp inlet,  
starboard, including (1)  
50 ship to shore cable  
& cabin outlets, circuit  
breaker panel  
**Interior, General:**  
Covers, berth  
Dinette, convertible  
Dropouts  
Fresh water system, 12V,  
cold only  
Mid-cabin w/mattress  
Refrigerator, 12V-115V  
Shower, with electric  
sump pump, 12V, cold only  
Sink, stainless steel  
Stove, 2-burner,  
alcohol/electric  
Tellt, recirculating,  
manual, wideblade discharge

Rails, stainless steel  
Seat, forward facing  
w/ cushion  
Seat, helm  
Switch, battery  
paneling  
Windscreen  
Docking lines  
Engine instrumentation:  
voltmeter, oil pressure,  
water temperature &  
tachometer  
Pole & flag, stern  
Rails, bow & side  
Slee, cockpit  
Trim tabs  
Water pressure system,  
hot & cold, 115V,  
w/ water heater

**Electrical:**  
Rectifier, 20 amps, auto  
charge & disconnect  
Wiring, dockside, 115V  
AC 30 amp inlet, 50  
amp to shore cable  
**Interior, General:**  
Berth, w/mattress,  
forward stateroom  
V-berth, convertible,  
w/cushion

Draperies, deckhouse, side & aft  
Glass-tinted, deckhouse  
(for both w/o optional  
lower controls)  
Grab rail, main salon (overhead)  
Lights, throughout, 12V  
Lockers  
Mirrors  
Refrigerator, electric 12V-115V  
Screens  
Shower, w/removable  
head & flap, seat,  
sump pump, curtain  
Sink, lavatory  
Sink, lavatory  
Stove, 3-burner,  
w/microwave oven  
Tack, parquet floor, galley  
& head  
Toilet, electric,  
w/dockside discharge  
& holding tank  
Wardrobe, locker

**365 COMMANDER  
SPORT FISHERMAN**

**General:**  
Anchor, w/line and deck pike  
Bottom paint, anti-fouling  
Bow pulpit, w/ rail  
Cocks, P & S  
Cockpit, fiberglass  
Coaming, cockpit, padded vinyl  
Control station, including:  
Electronic Storage  
Compass, 4", lighted  
Hour meter  
Docking lines  
Engine instrumentation:  
voltmeter, oil pressure,  
water temperature &  
tachometer  
Pole & flag, stern  
Rails, bow & side  
Rod storage, cockpit  
Seat, companion  
Seat, helm  
Slee, cockpit  
Top, folding w/ side curtains  
Trim tabs  
Water pressure system,  
hot & cold, 115V,  
w/ water heater  
Windshield opener, electric  
Wipers, windshield, electric (2)

**Electrical:**  
Rectifier, 20 amps, auto  
charge & disconnect  
Wiring, dockside, 115V  
AC 30 amp inlet, 50  
amp to shore cable

**Interior, General:**  
V-Berth w/mattress,  
 fwd stateroom  
Blower, head  
Blower, galley  
Duffel, convertible  
Door, transom  
Horn, dual trumpet  
Lights, throughout,  
Lockers  
Mirrors  
Refrigerator, electric 12V-115V  
Rod storage, cabin  
Screens  
Shower, w/removable head  
& flap, seat, sump pump  
Sink, stainless steel, galley  
Sink, lavatory  
Stove, 3-burner,  
w/microwave oven  
Tack, parquet floor, dinette

Toilet, electric,  
w/dockside discharge  
& holding tank  
Wardrobe, fwd  
stateroom & cabin

**380 CORINTHIAN  
DOUBLE CABIN**

**General:**  
Anchor, chocked, w/line  
& deck pike  
Bottom paint, anti-fouling  
Bridge & winddef,  
including:  
Full engine  
instrumentation &  
switches  
Rails, stainless steel  
Seat, helm, w/warm  
Windscreen  
Cocks, P & S  
Docking lines (4)  
Fuel equalizer valves  
Hatch, forward w/cushion  
Pole & flag, stern  
Swim platform, fiberglass  
Transom door  
Trim tabs  
Water pressure system,  
hot & cold, 115V,  
w/ water heater  
Windshield wipers (2)  
Deckhouse windshield  
Windshield, primer color

**Electrical:**  
Circuit breaker panel, 12V  
Rectifier, 20 amps,  
w/charge divider  
Wiring, dockside, (1) 115V  
AC 30 amp inlet,  
including (1) 50 amp to  
shore cable & cabin outlets  
**Interior, General:**  
Bed, double, w/mattress,  
master stateroom  
Berth, w/mattress, upper  
& lower, forward stateroom  
Control station, lower,  
includes full engine  
instrumentation  
Covers, berth  
Draperies  
Glass, tinted, main salon  
& master stateroom, w/screens  
Lights, throughout, 12V,  
Lockers  
Refrigerator, 12V-115V  
Shower, w/hub, sump pump, aft  
Sink, stainless steel, galley  
Stove, 3-burner, electric, w/  
microwave oven  
Toilet (2), racetracking,  
electric w/dockside discharge  
Wardrobe, forward stateroom

**391 CATALINA  
DOUBLE CABIN**

**General:**  
Anchor, chocked, w/line  
& deck pike  
Bottom paint, anti-fouling  
Bridge & winddef,  
including:  
Engine instrumentation:  
water temperature,  
oil pressure,  
tachometer,  
voltmeter & fuel gauge  
Rails, stainless steel  
Seat, helm  
Weather cloth  
Windshield, 3-section, vented  
Windshield wipers (2)  
Cocks, P & S  
Docking lines (4)  
Fuel equalizer valves  
Horn  
Rails, grab, cabin top  
Rails & stanchions,  
stainless steel, aft deck  
Seat, forward  
Trim tabs  
Water pressure system,  
hot & cold, 115V,  
w/ water heater

**Electrical:**  
Circuit breaker panel, 12V  
Rectifier, 20 amps,  
w/charge divider  
Wiring, dockside (1) 115V  
AC 30 amp inlet,  
parade, including (1)  
50 amp to shore cable  
**Interior, General:**  
Bed, double, w/mattress,  
master stateroom  
Bed, double, w/mattress,  
forward stateroom  
Covers, berth  
Draperies  
Glass, tinted, main salon  
& master stateroom, w/screens  
Headboard, aft stateroom  
Lights, throughout, 12V

Lockers  
Refrigerator, 12V-115V  
Shower, forward head  
& holding tank  
Sink, stainless steel, galley  
Stove, 3-burner, 115V,  
electric, w/microwave oven  
Toilet, (2), electric,  
racetracking,  
w/dockside discharge  
Top, w/cover, master  
stateroom head

**410 COMMANDER  
YACHT**

**General:**  
Anchor, chocked, w/line  
& deck pike  
Bottom paint, anti-fouling  
Bow rail  
Cocks, P & S  
Controls, including:  
Compass, 5"  
Full engine  
instrumentation  
Locker, for accessory  
switches and gauges  
Switch, battery  
paneling  
Windshield opener, manual  
Docking lines (4)  
Fuel equalizer valves  
Hatch, forward w/cushion  
Hull  
Rails & stanchions,  
stainless steel, side & aft  
Seat w/cushion, forward  
Stainless steel, diving  
Staff & flag, stern  
Trim tabs  
Water pressure system,  
115V, hot & cold,  
w/ water heater  
Weatherbeats, aft deck  
Windshield, 2-section  
ventated  
Windshield wipers (2)

**Electrical:**  
Generator, 7.5 KW  
(diesel) fresh water  
cooled, remote start  
station, w/indicator  
Light, muffler, fuel filter  
Generator, 6.5 KW (gas)  
raw water cooled,  
remote start station,  
w/muffler, fuel filter  
Rectifier, 20 amps, auto  
charge & disconnected  
Wiring, dockside, (1) 115V  
AC 30 amp inlet,  
including (1) 50 amp to  
shore cable & cabin outlets

**Interior, General:**  
Bed, double, w/mattress,  
master stateroom  
Berth, w/mattress &  
spread, forward stateroom  
Bottle rack  
Carpeting w/keelers  
Draperies  
Dresser, master stateroom  
Fans, exhaust, heads  
Glass, tinted, main salon,  
w/screens  
Headboard, upholstered,  
master stateroom  
Lights, throughout  
Locker, bottle storage  
Lockers  
Lounge, convertible, L-shape  
Refrigerator, 12 cu. ft.,  
combined w/freezer  
(2 door) & automatic  
ice maker  
Shower, (2)  
w/removable head &  
flex tube, sump pump, light  
Sink, stainless steel,  
stainless steel, galley  
Sinks, heads  
Stove, 3-burner,  
w/microwave oven  
Toilet, electric w/holding  
tank & dockside discharge  
Vanity, staterooms  
Wardrobe, staterooms

**421 COMMANDER  
SPORT SEDAN**

**General:**  
Anchor, w/line & deck pike  
Bottom paint, anti-fouling  
Bow rail  
Cocks, P & S  
Command Bridge,  
including:  
Compass, 5" w/assisted  
Engine instrumentation:  
water temperature,  
oil pressure,  
tachometer,  
transmission oil  
pressure & voltmeter  
Electronic storage  
Roller & ladder, stainless steel  
Seat, forward facing,  
w/cushion  
Seat, helm  
Windscreen  
Cover, privacy, for  
windshield & side  
shields, exterior  
Docking lines  
Rails & stanchions, side decks  
Staff & flag, stern  
Step, boarding  
Trim tabs  
Water pressure system,  
hot & cold, w/water heater  
**Electrical:**  
Generator, 12 KW, fresh  
water cooled, remote  
start station, indicator  
Ignition w/air shield,  
muffler, fuel filter  
Rectifier (2), 20 amp  
wiring, dockside, (1) 115V  
AC 30 amp inlet,  
including (1) 50 amp  
to shore cable  
**Interior, General:**  
Bed, double w/mattress &  
spread, owners stateroom  
Berth, w/mattress &  
spread, guest stateroom  
Blower, exhaust, head  
Carpeting  
Draperies, (except windshield)  
Glass, tinted, deckhouse  
(for both w/o optional  
lower controls)  
Lights, throughout, 12 V,  
Locker  
Mirror  
Refrigerator, 13 cubic  
feet, w/ice-maker  
Screens  
Shower,  
w/removable head &  
flex tube, sump pump, light  
Sink, stainless steel, galley  
Sink, toilet compartment  
Stove, 3-burner,  
w/microwave oven &  
cutting board cover  
Toilet, electric  
whank, holding,  
w/dockside discharge  
Wardrobe, staterooms

**45' AQUA-HOME**  
**General:**  
Antiskid deck surfaces  
Blower, bilge  
Caulk, mousing, 4" 10', 2-8"  
Deck (11 plates), fuel and  
fresh water, P & S  
Doors, cabin entry, sliding  
Bed, P & S; folding  
hatch & door, plexiglas, aft  
Drain plug, full  
Drip molding, cabin sides  
Extinguishers, fire (3)  
Fuel tanks, welded  
aluminox, 131 gal. ea. (2)  
Gauge, fuel  
Hatches, flush  
Horn, electric, single  
twinny  
Instrument panel, full  
engine instrumentation  
Locker, to sun deck,  
stainless steel  
Mufflers  
Propellers  
Pumps, bilge  
Rails, stainless steel, side  
decks, w/chain gates  
Rub rail, heavy duty, aluminum  
Screens, all opening windows  
Shafts, stainless steel  
Steering, hydraulic  
Storage, under fwd. deck  
Windshield wiper, electric (1)  
Water pressure system,  
115V, hot & cold,  
w/ water heater (12 gal.)  
Water tank, welded  
aluminum, 150 gal.

**Electrical:**  
Electrical system, cooled  
Fused circuit, AC & DC,  
circuit breakers  
Lights, navigation,  
international  
Outlets, duplex, cabin interior  
Switches, battery parallel  
& disconnect  
Voltmeter  
Wiring, dockside, 115V,  
AC, 30 amp inlet,  
including (1) 50 amp to  
shore cable  
**Interior, General:**  
Carpeting, throughout interior

Cuddy cabin, forward,  
under cabin, w/2 double beds  
Dinette table, folding  
Draperies, throughout  
Lights, 12V, fluorescent  
Lights, 12V, DC  
Lights, 115V, AC  
Lockers, hanging (4)  
Lounge, convertible  
Refrigerator/Freezer, 11.8  
cu. ft., full size  
Shower, w/cushion &  
sump pump, fwd. head  
Sink, stainless steel,  
split level toilet/water  
Storage, under galley  
Stove, 3-burner,  
115V AC, w/warm  
Toilet, (2), racetracking,  
electric, w/dockside discharge  
Top, w/cover, in master head  
Vanity, mirror, in  
master stateroom  
Vanity, vanity, both heads

Please refer to Cruiser  
Price Schedule for  
optional equipment  
and pricing

Note: The deck plans  
and photographs shown  
herein may include  
optional equipment on  
certain models. Dimensional  
specifications shown in  
this brochure are standard  
equipment only.

Representations made  
in this brochure do not  
constitute an expressed  
warranty or implied  
warranty of merchantability  
or fitness for a particular  
purpose. Any and all  
warranties are contained  
in the National Registration  
Certificate. Copies of  
Limited Body Warranty  
are available at any  
authorized Mercury  
Cruiser dealer or as  
part of the Warranty  
Registration Certificate  
received after purchase  
of product.

*Chris + Craft*

MURRAY CHRIS-CRAFT CRUISERS, INC., 100 Airline, Holland, Michigan 49423 (616) 346-6575  
MURRAY CHRIS-CRAFT SPORTBOATS, INC., P.O. Box 9450, Bradenton, Florida 33506 (813) 755-1544  
MURRAY CHRIS-CRAFT SPORTDECKS, INC., P.O. Box 85, Goshen, Indiana 46526 (219) 534-2341  
MURRAY CHRIS-CRAFT AQUA-HOMES, INC., P.O. Box 9450, Bradenton, Florida 33506 (813) 755-1544  
CORPORATE OFFICES, P.O. Box 9450, Bradenton, Florida 33506 (813) 755-2878, (813) 755-1544 TLX 808761

CHRIS-CRAFT IS THE REGISTERED TRADEMARK OF CHRIS-CRAFT INDUSTRIES

PRINTED IN U.S.A. MS2 755 \$2.00