

THE CHRIS-CRAFT COMMANDERS.



WHEN IT COMES TO POWERBOATS, WE WROTE THE BOOK.

And we're still writing it.

In 1894 Chris Smith, the man who founded Chris-Craft, literally invented the idea of a pleasure powerboat. His first efforts were speedboats. Then came cruisers, sedans and motor yachts. He originated the concept of "level-riding," which for the first time flattened out the traditional bow-lift of a speedboat. Chris-Craft also was the first to introduce a giant diesel.

Through the years, the company's achievements and "firsts" have been almost too numerous to mention. Today, the Chris-Craft Commander® is living proof of a great heritage. A boat that combines the best of two worlds—the hard-working toughness of a sport fisherman and the fabulous comfort of a superbly appointed family cruiser. Every hull is custom designed to the exact performance requirements of that boat.

Minimal maintenance is a "must," as evidenced by aluminum bulkheads (teak optional), easy-to-reach engine compartments, and all-in-one electrical systems.

Each Commander is assembled by craftsmen who do much of their work by hand. Materials are always the finest available. And it is another Chris-Craft custom to have higher resale values. All good reasons to make your next boat a Chris-Craft.





36' COMMANDER®

You're looking at a boat that will give you the rare combination of a gutsy tournament fisherman and the great indoor comfort and convenience of a luxurious family cruiser.

The 36' Commander's hull was designed to be the perfect tournament fishing hull. With a high degree of dead rise forward, then tapered down almost flat at the transom. This gives it a smoother entry and better maneuverability when backing down on a fish, than the traditional deep-V. It's made of extra strong, long-lasting fiberglass.

Standard power is twin Chris-Craft 330's, which automatically mean extraordinary cruising speeds. Twin diesels are optional. And maintenance is never a problem. The engine compartment is neat, well-organized and extremely easy to get to. Same thing is true for the electrical system, which is completely integrated and has individual breakers all together in one panel.

Inside, the 36' Commander sleeps six in exquisite luxury. The owner's stateroom is bigger than ever, with large, plush V-berths and teakwood drawers. Plus an optional filler that gives you a full-sized double bed. The guest

stateroom is something special, too. With extra wide upper and lower berths, an oversized wardrobe, and even a chest of drawers. The salon is finished in hand-rubbed teak. Lush carpet and an L-shaped lounge are standard. All counters and table corners are rimmed with teak. Lastly, you can be sure that both head and galley are complete.

Here is a boat that is living proof of the kind of ingenuity that has consistently made Chris-Craft ruler of the seas. Chances are, it costs more than other boats its size, but you couldn't buy a better boat for the money.



Galley



Main Salon, fwd. view



Head



Owner's Stateroom

Guest Stateroom



42' COMMANDER®

It's been called the perfect boat.

Sleeps six in total privacy and comfort. Performs with the able-bodied skills of a tournament fisherman. Lets you live on the sea in the lap of pure luxury. And it may be the fastest 42 footer afloat.

With its optional twin 425 horsepower diesels, the 42' Commander can get out of the weather or into the fishing in no time. It's built with huge, fiberglass stringers on a hull that was designed specifically to do the demanding work of a sport fisherman. With a high degree of dead rise forward, then tapered down almost flat at the transom. This gives the 42' Commander a smoother entry and more comfortable cruising ability.

Inside the master stateroom you can stretch out on twin 6'6" V-berths. The head has a private entrance and enclosed shower. The guest stateroom is also fully enclosed, with a large wardrobe, built-in drawers and storage lockers. The galley has everything you need - 3-burner stove with oven, rotisserie and cutting board, 6.7 cubic foot refrigerator, a

freezer (the same size) with ice-maker, even a double sink.

Like all Chris-Crafts, the 42' Commander is built to enjoy and to last. And when your pleasure's over, you'll enjoy the exceptional resale value that Chris-Crafts have exhibited continuously, ever since the first one was built.



Owner's Stateroom (Layout not shown)



Guest Stateroom



Head w/ stall shower



Galley



Salon



45' COMMANDER®

Owning the 45' Commander gives you a choice of layouts — and extra-huge salon or an extra stateroom — depending on your own personal needs.

With the galley below, you'll have the biggest salon afloat for boats of this class. With the galley above, you'll have a third double stateroom. Either way, you'll have a private head and separate shower in the master stateroom. And a galley that has it all, from freezer to garbage disposal. Even the air conditioning is standard.

Besides having the accommodations of a luxury cruiser, the 45' Commander behaves with the durability and performance of a rugged tournament fisherman. The standard Command Bridge® allows a full view of the cockpit when the fish are fighting and it's also large enough for half a dozen people to sit around and socialize. The cockpit itself is wide enough for optional fighting chairs, circulating live baitwell and port-and-starboard fish boxes that can be built into the deck.

Like all Chris-Crafts, the 45' Commander is designed and built so that it requires a minimum amount of maintenance. There is no bare wood anywhere. Easy engine accessibility. All



Salon, fwd. view



Salon, standard layout



Galley-lower level (opt.)



Guest Stateroom, fwd.



Guest Stateroom fwd. (aft view)



Guest Stateroom



Guest Head



Master Stateroom



Owner's Head



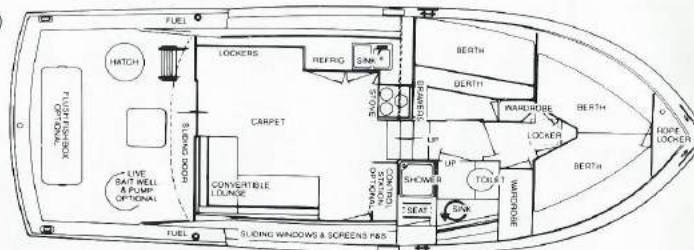
Overhead rod storage, salon

mooring hardware is through-bolted so it won't work loose during heavy seas. Even the electrical system is obviously the result of our dedication to simplicity — individual breakers for each and every accessory on board are found on one convenient panel.

The 45' Commander... more pleasure, more performance, more peace of mind, and in the final analysis, more resale value when the time comes. What better reasons are there for coming to Chris-Craft.

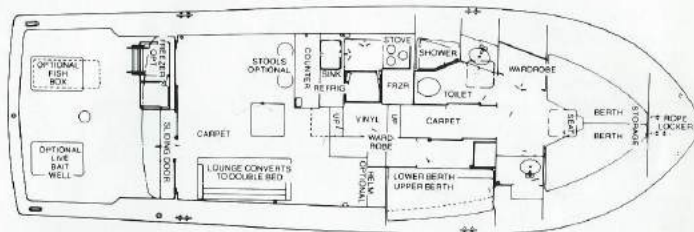
36' COMMANDER®

SPECIFICATIONS: (U.S. Std.)
 Length, 36'0"; Beam, 13'0"
 Draft, 3'1-1/2"
 (Metric) Length, 10.97m
 Beam, 3.96m; Draft, 95cm.



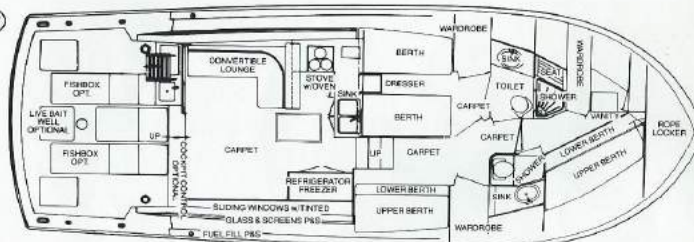
42' COMMANDER®

SPECIFICATIONS: (U.S. Std.)
 Length, 42'4-1/3"; Beam, 14'0"
 Draft, 47"
 (Metric) Length, 12.89m
 Beam, 4.27m; Draft, 1.9m.

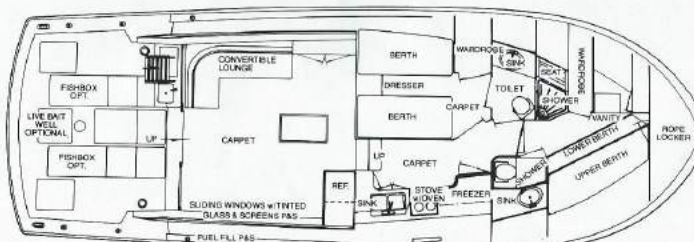


45' COMMANDER®

SPECIFICATIONS: (U.S. Std.)
 Length, 45'6"; Beam, 16'0"
 Draft, 46-1/2"
 (Metric) Length, 13.87m
 Beam, 4.88m; Draft, 1.18m.



GALLEY SALON LEVEL (STD.)



GALLEY LOWER LEVEL (OPT.)

**THE CHRIS-CRAFT
DEPARTMENT
OF INTERIORS.**



AMBER INTERIOR
Available in Chris-Craft 36' Commander,
42' Commander and 45' Commander.



SLATE BLUE INTERIOR
Available in Chris-Craft 36' Commander,
42' Commander and 45' Commander.



EMERALD GREEN INTERIOR
Available in Chris-Craft 36' Commander,
42' Commander and 45' Commander.

CHRIS-CRAFT CORPORATION LIMITED BOAT WARRANTY

Your new Chris-Craft is warranted by Chris-Craft Corporation, 555 S.W. 12th Avenue, Pompano Beach, FL 33060 ("Chris-Craft"), through your selling Chris-Craft dealer ("Dealer"). When you purchase your new Chris-Craft boat, you will be provided with a copy of this limited warranty and an original and duplicate original warranty registration certificate ("Registration Certificate").

THE ORIGINAL REGISTRATION CERTIFICATE MUST BE COMPLETED BY YOU AND THE SELLING DEALER AT TIME OF SALE AND RETURNED TO CHRIS-CRAFT WITHIN 15 DAYS AS A CONDITION PRECEDENT TO OBTAINING ANY COVERAGE UNDER THIS LIMITED WARRANTY. THE DUPLICATE ORIGINAL REGISTRATION CERTIFICATE SHOULD ALSO BE COMPLETED AT THE SAME TIME AND RETAINED BY YOU.

WHAT IS COVERED

CHRIS-CRAFT CORPORATION ("CHRIS-CRAFT") WARRANTS TO THE FIRST RETAIL PURCHASER OF CHRIS-CRAFT BOATS THAT CHRIS-CRAFT WILL MAKE ANY STRUCTURAL REPAIRS NECESSARY BECAUSE OF DEFECTS IN MATERIAL OR WORKMANSHIP FOR TWELVE (12) MONTHS FROM THE DATE THE BOAT IS DELIVERED TO THE FIRST RETAIL PURCHASER.

ALL IMPLIED WARRANTIES, INCLUDING WITHOUT LIMITATION ANY IMPLIED WARRANTIES OF MERCHANTABILITY AND/OR FITNESS FOR A PARTICULAR PURPOSE, ARE LIMITED BY CHRIS-CRAFT TO A PERIOD OF ONE (1) YEAR AFTER THE DATE YOU PURCHASE YOUR CHRIS-CRAFT FROM YOUR DEALER.

SOME STATES DO NOT ALLOW LIMITATIONS ON HOW LONG AN IMPLIED WARRANTY LASTS, SO THE LIMITATIONS MAY NOT APPLY TO YOU.

WHAT IS NOT COVERED

This warranty does not cover:

1. Any boat which has been repaired or altered in any way so as to affect its use and operation by persons other than Chris-Craft or an authorized Chris-Craft dealer.
2. Engines, outdrives, controls, propellers, generators and/or any other components, equipment or other accessories which are not manufactured by Chris-Craft, whether or not warranted by such other manufacturers.
3. Gelcoat finish cracking, crazing, discoloration or blistering, varnishes, paints, chrome plated, stainless steel or anodized aluminum finishes.
4. Windshield or window breakage.
5. Leakage around windshields, windows, hatches or other apertures.

6. All canvas, zippers, vinyl, upholstery, plastics, fabrics and trim.

7. Any boat which has been subjected to misuse, negligence, alteration or accident, or used for racing or commercial, rental or other income producing activities, or which has been operated contrary to any instructions furnished by Chris-Craft.

8. Any boat which has been repowered beyond Chris-Craft's power recommendations.

9. Loss of time, inconvenience, loss of use of the boat or other matters not specifically covered hereunder.

10. Electrolysis, galvanic or crevice corrosion, or deterioration of any underwater components.

11. Haul and launch charges and/or storage charges. (Refer to California Supplement, if applicable.)

12. Chris-Craft expressly disclaims any liability for incidental or consequential damages or losses of any sort whether or not arising from defects, malfunction or failure to conform to specifications and whether or not arising from breach of this warranty or any implied warranty whatsoever.

SOME STATES DO NOT ALLOW THE EXCLUSION OR LIMITATION OF INCIDENTAL OR CONSEQUENTIAL DAMAGES, SO THE ABOVE LIMITATION OR EXCLUSION MAY NOT APPLY TO YOU.

GENERAL PROVISIONS

1. THIS WARRANTY GIVES YOU SPECIFIC LEGAL RIGHTS, AND YOU MAY ALSO HAVE OTHER RIGHTS WHICH VARY FROM STATE TO STATE.

2. Chris-Craft does not authorize any person, including a Chris-Craft dealer, to create or assume for it any other obligation of liability with respect to its boats. No person, including a Chris-Craft dealer, is authorized to make any repairs or replacements under this warranty without prior written approval of Chris-Craft.

3. Chris-Craft wants you to know that, although Chris-Craft always tries to finish warranty service promptly, each case of warranty service presents different problems and Chris-Craft cannot guarantee how soon warranty service will be completed. For this reason, validation of this warranty, by completing and returning the Original Registration Certificate as provided herein, shall constitute a waiver by you, the first purchaser, of any repair or warranty service time period limitations required by any applicable and valid State law, including, without limitation, the Song-Beverly Consumer Warranty Act, enacted by the State of California.

STEPS TO OBTAIN PERFORMANCE OF CHRIS-CRAFT LIMITED WARRANTY

Chris-Craft shall have no obligation under this written warranty unless and until each of the following conditions precedent is met:

1. The first retail purchaser completes and mails the Warranty Registration Certificate to Chris-Craft within fifteen (15) days from date of sale of the boat to the purchaser, and

2. Notice of each warranty claim is given in writing to Chris-Craft within a reasonable period of time after discovery of any claimed defect, and

3. The boat is delivered, at Chris-Craft's discretion, (i) to Chris-Craft at its factory in either Holland, Michigan or Pompano Beach, Florida, or (ii) your selling Chris-Craft dealer or other Chris-Craft dealer or facility selected by Chris-Craft, with all transportation charges to and from the factory, dealer or other facility prepaid. Upon receipt of a notice of warranty claim Chris-Craft will advise where the boat should be delivered for examination to determine if the claim is covered by this limited warranty. If coverage is available, Chris-Craft will advise where the warranty work will be performed and will advise when such work has been completed. If coverage is unavailable, Chris-Craft will so advise and will instruct as to redelivery of the boat. Information on warranty performance may be obtained from:

Customer Service Department
Chris-Craft Corporation
555 S.W. 12th Avenue

Pompano Beach, Florida 33060

REFER TO CALIFORNIA SUPPLEMENT, IF APPLICABLE. All prices are F.O.B. factory. Prices and specifications are based on information available at the time of publication approval. Optional equipment prices apply only when included on the original order. The right is reserved to make changes, or to discontinue, at any time without notice prices, colors, materials, equipment, specifications and models. Equipment and accessories pictured but not included in list of standard equipment will be furnished at extra cost if available. The right is reserved to ship from any Chris-Craft factory. All orders accepted subject to prices prevailing at the time of shipment. Chris-Craft shall not be liable for any loss or damage due to delay or failure to deliver. If dealer fails to accept and pay for boat and equipment ordered when ready for delivery, Chris-Craft may retain, as liquidated damages and not as a penalty, dealer's deposit without prejudice to other rights and remedies. Orders are subject to acceptance only at Chris-Craft Corporation, Pompano Beach, Florida, 33060.

For information on power, standard and optional equipment, visit your authorized dealer for detailed Chris-Craft data sheets.

Chris-Craft CORPORATION

555 SOUTHWEST 12th AVENUE, POMPANO BEACH, FLORIDA 33060 305/946-4000 TLX. #514423 CHRISCRAF POMP

CHRIS-CRAFT. THE GREAT AMERICAN BOAT.

