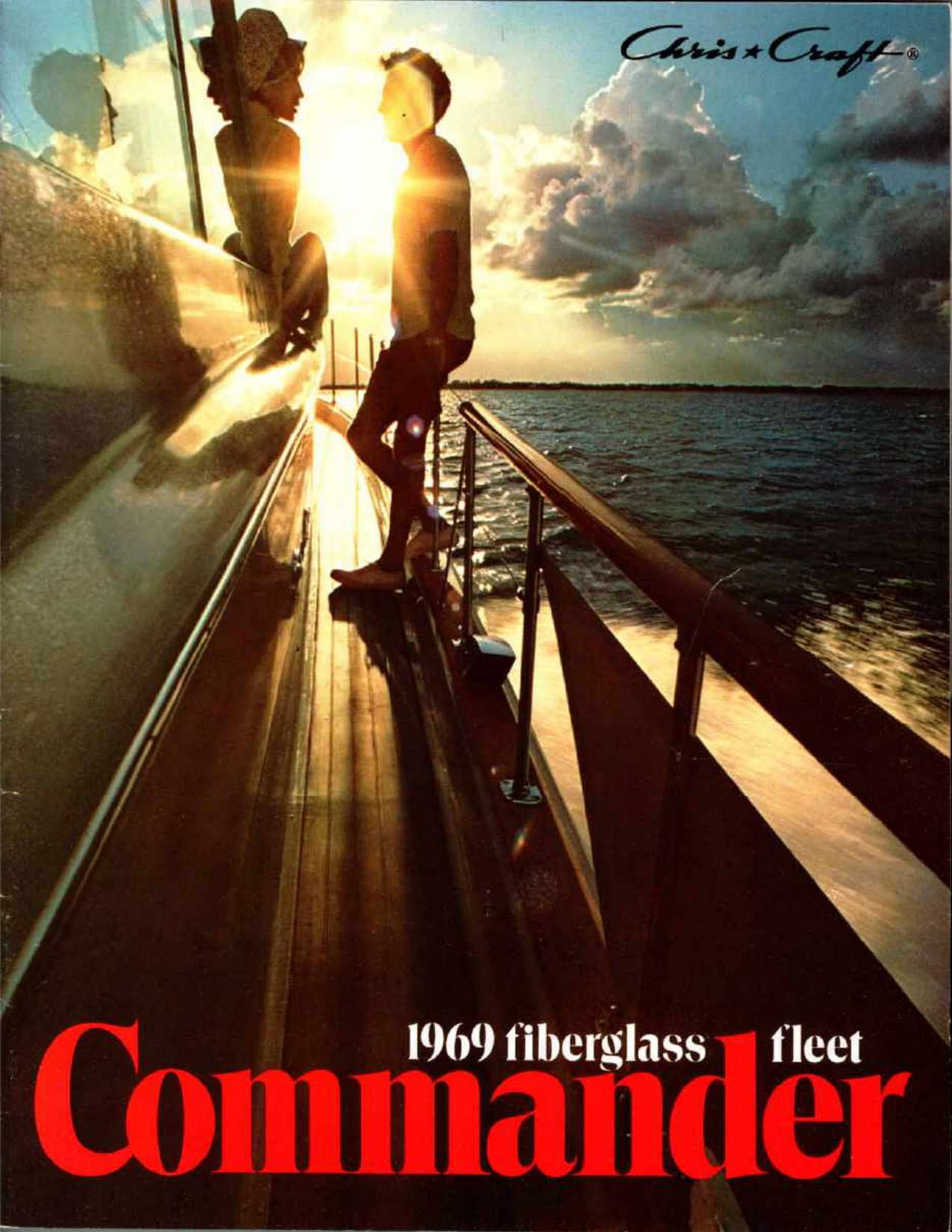


*Chris + Craft*®



1969 fiberglass fleet  
**Commander**



# The proudest of fleets

In order to produce fiberglass boats equal in quality and performance to the other Chris-Craft fleets, it was necessary for Chris-Craft to develop a whole new technology for fiberglass boat-building. New gelcoats and resins with greater resistance to cracking, fading and crazing were produced. New production methods were found. New reinforcing materials such as Synkore and Duo-Glas were developed . . . and many other innovations came about. And they're still coming about in Chris-Craft's Research and Development Division in Pompano Beach, Florida.

The fruits of the new technology are offered in every model of the 1969 Commander fleet, the proudest ever offered in fiberglass by any builder.

The fleet ranges from a sporty new 19-foot Super Sport to the Queen of the Fleet — the 60-foot Commander. Chris-Craft's fiberglass technology played no small part in bringing about this grand lady . . . and as in the past, Chris-Craft leadership paves the way for others. A new era of fiberglass boats of motor yacht size has begun.

There are other pleasant surprises in store in the 1969 fleet. In many cases Chris-Craft V8 engine power has been increased, promising livelier performance for Commander owners. And a great many items usually considered as extra equipment are now standard equipment aboard the 1969 Commanders, making them even greater values than ever. Like all Chris-Craft products, Commander models are protected by the Chris-Craft Warranty, which extends for two years on parts and one year on labor.



*Chris-Craft Cruise Control, standard equipment on some Commander models, optional on others, is a system which lets the pilot adjust trim tabs faired into the hull bottom at the stern. Greater speed, fuel economy and load adjustment can be achieved simply by moving a pair of switches at the helm. Available with a position indicator (extra).*



Stainless rail optional.





You can choose the type of boat you want with this highly adaptable model. High performance? Try the standard hardtop version. Speeds to 39 mph with twin 200 hp power. Cruising? Choose optional galley and convertible dinette installations to cruise four (standard V-berth platforms and optional toilet forward). Fishing? Add the optional Command Bridge and watch the action in the huge cockpit. New standard equipment items add comfort, convenience, and value to this versatile boat.

## 27' Commander Sports Express

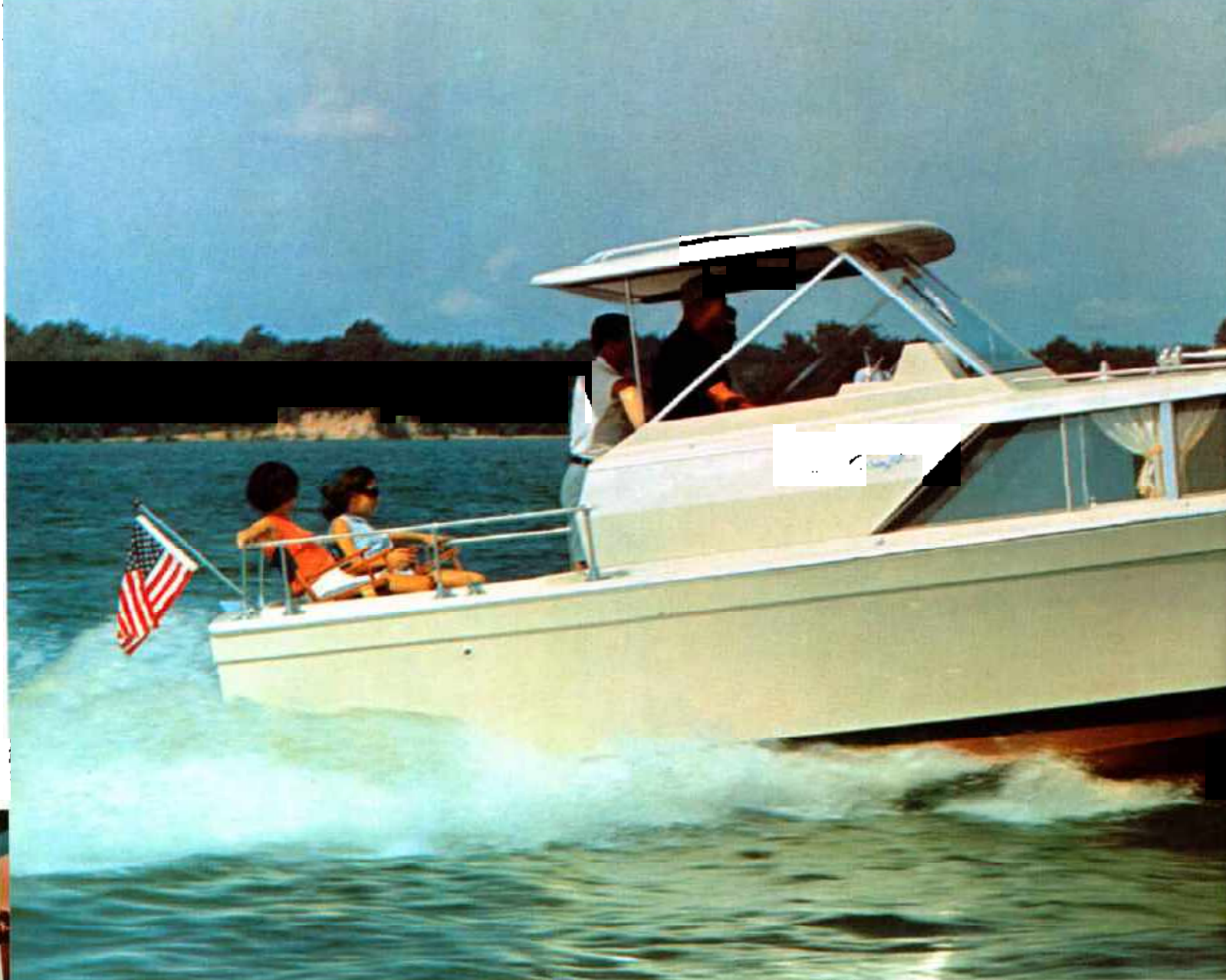
### SPECIFICATIONS

- Sleeping Capacity ... 2
- Length ... 27'0"
- Beam ... 10'3"
- Draft (twin screw) ... 22 1/4"
- Freeboard, forward ... 51 1/2"
- Freeboard, aft ... 37 1/4"
- Height from waterline (clearance) ... 7'9"
- Weight (lbs., estimated) ... 6,436
- Headroom ... 6'2"
- Fuel Capacity, gallons ... 80
- Forward, Side and Aft Decks ... Fiberglass
- Cockpit Floor ... Vinyl-covered
- Bottom ... Fiberglass
- Hullsides ... Fiberglass

### STANDARD EQUIPMENT

- Anchor and Nylon Line
- Bilge Blower
- Bow Pole and Pennant
- Chocks and Cleats
- Cockpit Paneling
- Cockpit Step
- Deck Hatch, forward
- Deck Lines, nylon
- Electric Bilge Pump, automatic
- Electric Horn
- Fire Extinguishers
- Fog Bell
- Handrails on hardtop
- Hardtop with ventilating windshield and sliding side shields
- Helmsman and Companion Seats with folding footrests
- International Navigation Lights
- Life Preservers
- Mast with Anchor Light and Bow Lights
- Mufflers
- Shipping Cradle
- Stern Pole and Ensign
- Ventilating Windshield
- Windshield Wiper

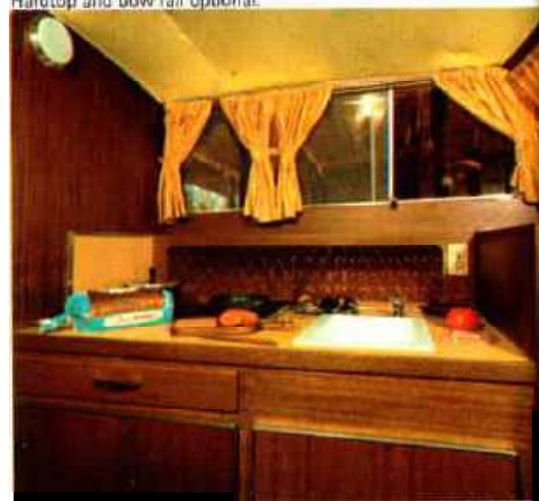




Hardtop and bow rail optional.

This handsome cruiser accommodates four in comfort, comes ready to cruise with an impressive list of standard equipment usually offered as optional on a boat this size.

Examples: draperies, bilge blower, helmsman and companion seats, and 115V AC wiring for shore hook-up. She's as impressive in her performance as she is in her cruising comforts: 38 mph with twin 200 hp V8's, also offered with single 230 hp.



## 27' Commander



**SPECIFICATIONS**

Sleeping Capacity . . . 4  
 Length . . . 27'0"  
 Beam . . . 10'3"  
 Draft (single screw) . . . 25 1/2"  
 Draft (twin screw) . . . 22 1/4"  
 Freeboard, forward . . . 51 1/2"  
 Freeboard, aft . . . 37 1/4"  
 Height from waterline  
 (clearance)  
 to top of mast . . . 9'3"  
 Weight (lbs., estimated)  
 . . . 5,915-7,174  
 Headroom . . . 6'3"  
 Fuel Capacity, gallons  
 (single screw) . . . 48  
 Fuel Capacity, gallons  
 (twin screw) . . . 80  
 Fresh-water Capacity,  
 gallons . . . 18.5  
 Forward, Side and Aft  
 Decks . . . Fiberglass  
 Cockpit Floor . . . Fiberglass

**STANDARD EQUIPMENT**

Anchor and Nylon Line  
 Battery Disconnect Switches  
 Bilge Blower  
 Bow Pole and Pennant  
 Carpeting  
 Chocks and Cleats  
 Cockpit Paneling  
 Cockpit Rail  
 Convertible Dinette  
 Deck Hatch, forward  
 Dock Lines, nylon  
 Dockside Wiring 115V AC  
 30 amp, 3-wire inlet with  
 shore cable, adapter and  
 3-wire cabin outlets  
 Draperies  
 Electric Bilge Pump,  
 automatic  
 Electric Horn  
 Fire Extinguishers  
 Foam Cushions and Mattresses  
 Fog Bell  
 Cold Water Pressure System  
 Galley with Alcohol Stove,  
 Ice Box, Sink  
 Handrails on cabin top  
 Helmsman and Companion  
 Seats with folding foot rest  
 International Navigation  
 Lights  
 Life Preservers  
 Mast with Anchor Light  
 Mirror in Lavatory  
 Mufflers  
 Screens  
 Shipping Cradle  
 Stern Pole and Ensign  
 Toilet, manual  
 Ventilating Windshield  
 Windshield Wiper







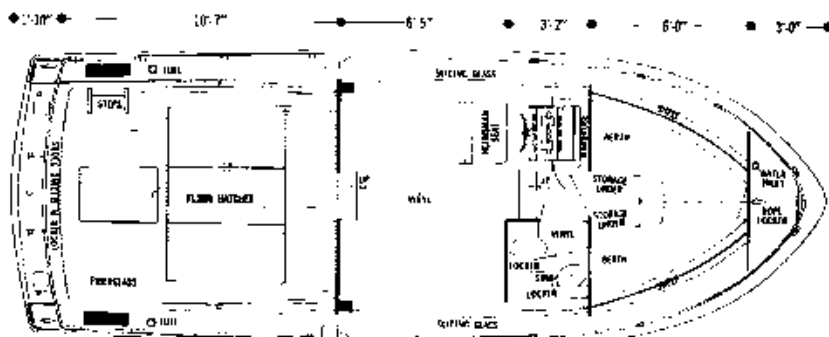


Command bridge and bow rail optional.



## 31' Commander Sports Express

A great favorite with sport fishermen, this Commander boasts speeds that few others can match. Twin 230 and 300 hp V8's are the choices, and the latter deliver 39 mph. The control station with standard helmsman's seat is to port, and opposite is a fully enclosed lavatory. Twin berths in the private forward stateroom sleep two, and two more can sleep aboard with the addition of an optional convertible dinette. A galley is also available. Plenty of storage throughout, including generous space under the aft deck. Equipment, previously offered as optional, but now standard, includes bilge blower, mufflers, cold water pressure system and windshield wiper.



### SPECIFICATIONS

Sleeping Capacity . . . 2  
 Length . . . 31'0"  
 Beam . . . 11'3 1/2"  
 Draft . . . 27 3/4"  
 Freeboard, forward . . . 57"  
 Freeboard, aft . . . 39 3/4"  
 Height from waterline  
 (clearance)  
 to top of mast . . . 9'3"  
 Height from waterline  
 with Command Bridge  
 to top of mast . . . 11'3 1/4"  
 Weight (lbs., estimated)  
 . . . 9,320-10,018  
 Headroom . . . 6'4"  
 Fuel Capacity, gallons . . . 150  
 Fresh-water Capacity,  
 gallons . . . 25  
 Forward, Side and Aft  
 Decks . . . Fiberglass  
 Cockpit Floor . . . Fiberglass

### STANDARD EQUIPMENT

Anchor and Nylon Line  
 Battery Disconnect Switches  
 Bilge Blower  
 Bow Pole and Pennant  
 Chocks and Cleats  
 Cockpit Paneling  
 Cockpit Rail with Gates  
 Cockpit Step  
 Deck Hatch, forward  
 Dock Lines, nylon  
 Electric Bilge Pump,  
 automatic  
 Electric Horns  
 Fire Extinguishers  
 Foam Cushions and Mattresses  
 Fog Bell  
 Cold Water Pressure System  
 Handrails on cabin top  
 Hardtop  
 Helmsman Seat with  
 folding foot rest  
 International Navigation  
 Lights  
 Life Preservers  
 Mast with Anchor Light  
 Mirror in Lavatory  
 Mufflers  
 Radio Ground  
 Shipping Cradle  
 Stern Pole and Ensign  
 Toilet, manual  
 Ventilating Windshield  
 Windshield Wipers (2)







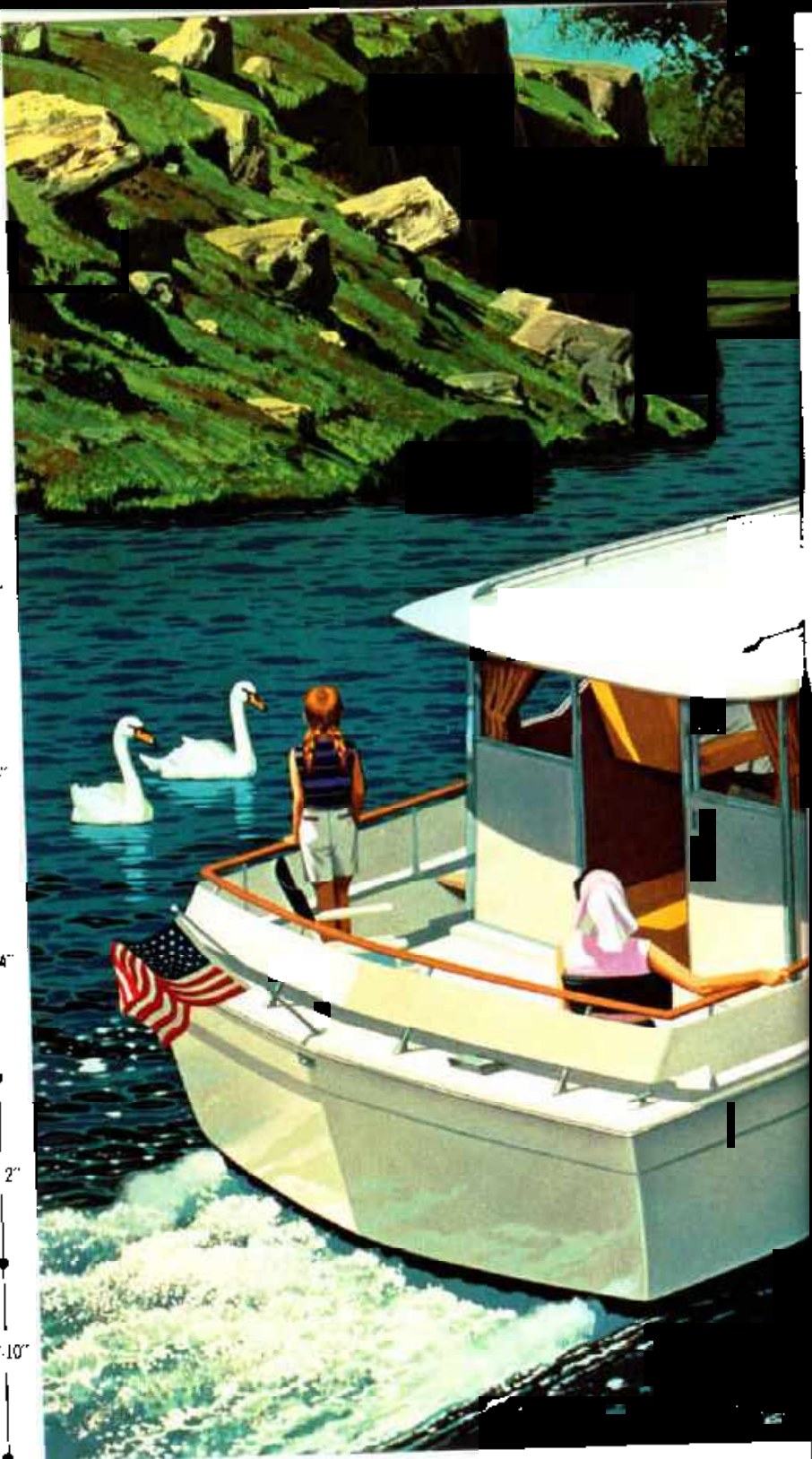
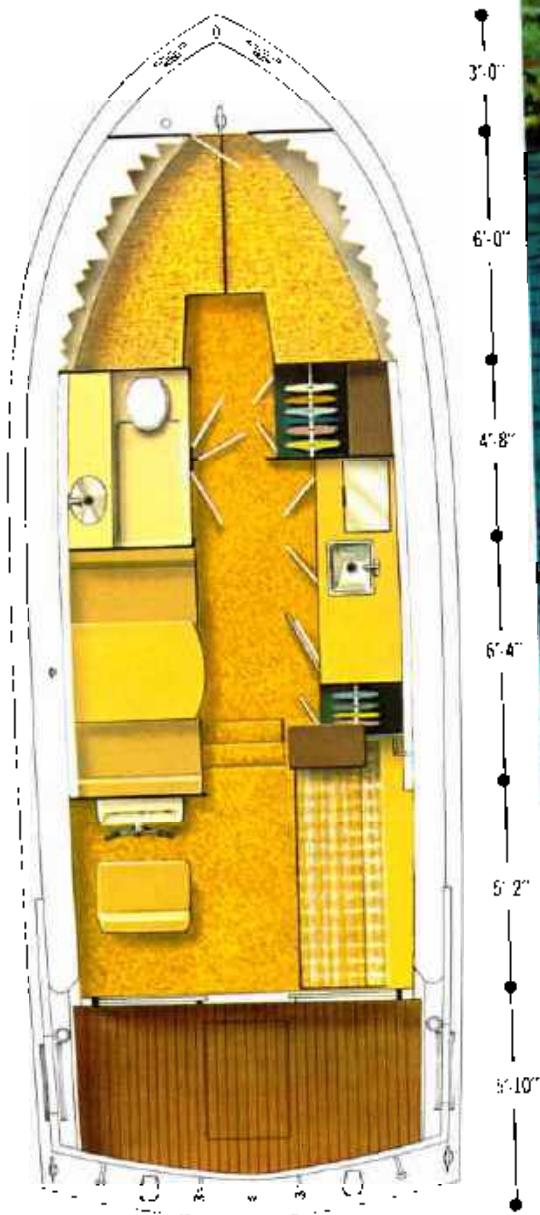
Pleasurable cruising for six . . . and luxury is the keynote. The private forward stateroom has its own wardrobe and storage under berths. The spacious L-shaped galley is designed for easy installation of electric range and under-counter refrigerator. Equipment frequently offered as optional in other boats this size, but standard in the 31' Commander, includes bilge blower, mufflers, cold water pressure system, windshield wipers, companion seat, and 115-V AC wiring for shore hookup. Powered by twin 230 hp V8's, top speed is 36 mph. Cruise control and hardtop with ventilating sideshields extra.

#### **SPECIFICATIONS**

Sleeping Capacity . . . 6  
 Length . . . 31'0"  
 Beam . . . 11'3 1/2"  
 Draft . . . 27 1/4"  
 Freeboard, forward . . . 54 1/2"  
 Freeboard, aft . . . 38 1/2"  
 Weight (lbs., estimated)  
 . . . 9,682  
 Height from waterline  
 (clearance)  
 to top of mast . . . 10'9"  
 Headroom . . . 6'3 1/4"  
 Fuel Capacity, gallons . . . 100  
 Fresh-water Capacity,  
 gallons . . . 25  
 Forward, Side and Aft  
 Decks . . . Fiberglass  
 Cockpit Floor . . . Fiberglass

#### **STANDARD EQUIPMENT**

Anchor and Nylon Line  
 Battery Disconnect Switches  
 Bilge Blower  
 Bow Pole and Pennant  
 Carpeting  
 Chocks and Cleats  
 Cockpit Paneling  
 Cockpit Rail with Gates  
 Convertible Dinette  
 Deck Hatch, forward,  
 aluminum with vent  
 Dock Lines, nylon  
 Dockside Wiring 115V AC,  
 30 amp, 3-wire inlet with  
 shore cable, adapter and  
 3-wire cabin outlets  
 Draperies  
 Electric Bilge Pump,  
 automatic  
 Electric Horns  
 Fire Extinguishers  
 Foam Cushions & Mattresses  
 Fog Bell  
 Cold Water Pressure System  
 Galley with Alcohol Stove,  
 Ice Box, Sink  
 Handrails on cabin top  
 Helmsman and Companion  
 Seats with folding footrests  
 International Navigation  
 Lights  
 Life Preservers  
 Lounge, converts to upper  
 and lower berths  
 Mast with Anchor Light  
 Mirror in Lavatory  
 Mufflers  
 Radio Ground  
 Screens  
 Shipping Cradle  
 Stern Pole and Ensign  
 Toilet, manual  
 Ventilating Windshield  
 Weather Cloths  
 Windshield Wipers (2)



**31' Commander Sedan**





#### SPECIFICATIONS

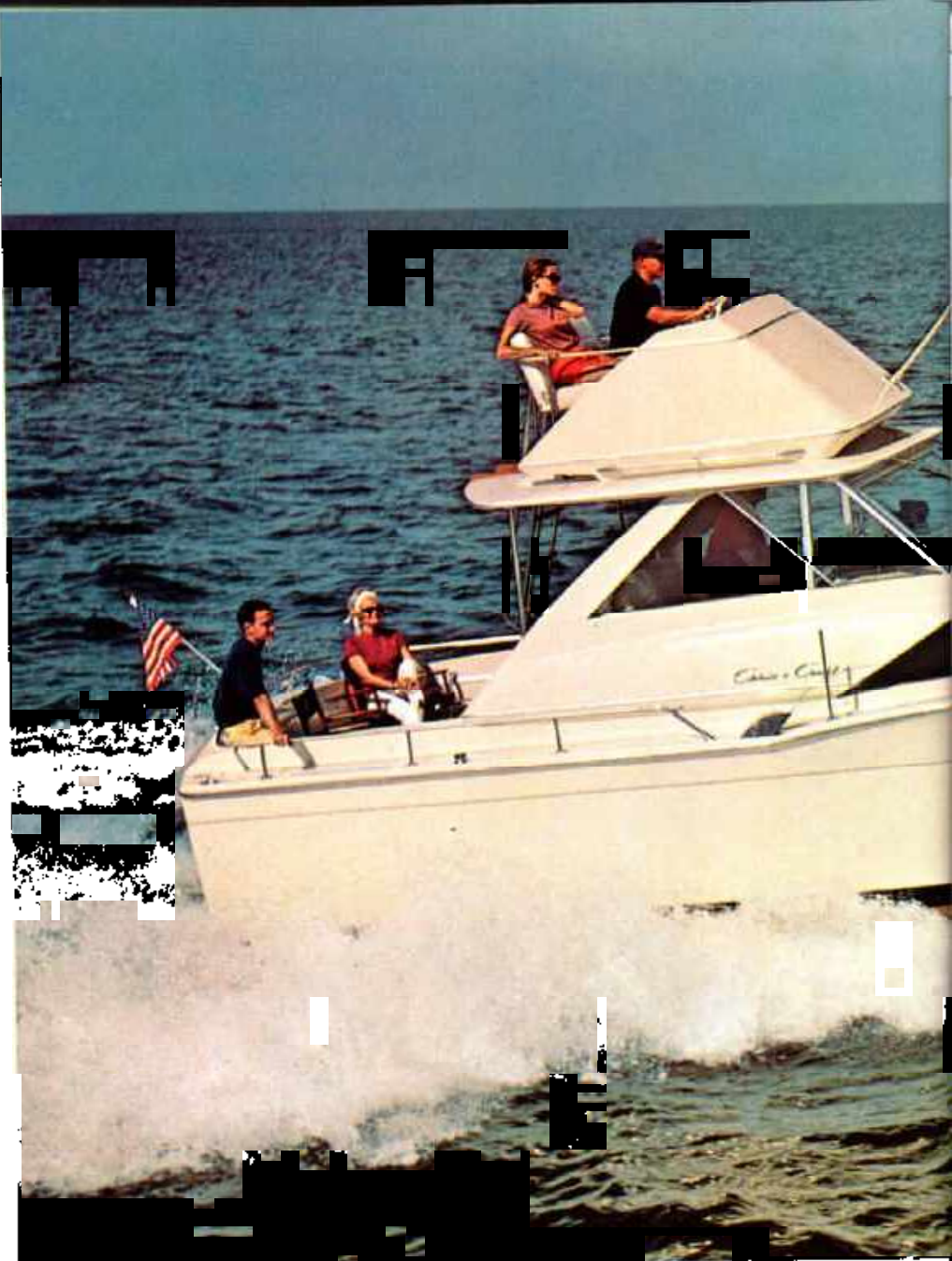
Cruising Capacity 6  
 Length 31'0"  
 Beam 11'3 1/2"  
 Draft 2'2 1/2"  
 Freeboard, forward 34 1/2"  
 Freeboard, aft 35 1/2"  
 Height from Waterline  
 (highest) 6'0"  
 Weight (lbs., estimated)  
 11,500  
 Fuel tank 6.35  
 Fuel Capacity, gallons 150  
 Fresh Water Capacity,  
 gallons 20  
 Deck and Cockpit Floor  
 Full fiberglass

#### STANDARD EQUIPMENT

Anchor and Nylon Line  
 Bilge Blower  
 Bow Thruster and Postmount  
 Cockpit Panel (1)  
 Cockpit Rail with Gates  
 Composite Dredge  
 Deck Hatch, forward  
 Deck Hatch, aft  
 Dredge  
 Electric Bilge Pump,  
 automatic  
 Electric Horn  
 Five LED Signals  
 Faint Cushions  
 Inboard Mattresses  
 Inboard Bed  
 Fresh Water Pressure System  
 Hot and Cold  
 Galley with Alcohol Stove  
 12 Volt Refrigerator with  
 "Weekender" Unit  
 Hardtop  
 Helmman Seats with  
 Folding Footrest  
 International Navigation  
 Lights  
 Life Preservers  
 Mirrors in Lavatory  
 Mirrors  
 Radio, Ground  
 Seats  
 Slipping Chair  
 Shower  
 Stern Pole and Lifting  
 Foot, marine  
 Ventilation Washline  
 Weather Cloths  
 Windshield Wipers (2)  
 115V Wiring with  
 Circuit Breaker Fuse(s)

Photo courtesy

New and unique in many ways, this comfortable all-purpose Commander has plenty to offer a cruising party of six. The large private forward stateroom has a huge wardrobe and its own entrance to the lavatory (shower standard). Another entrance leads to the main cabin. The galley is extra-long, with an electric refrigerator equipped with a special Weekender "holdover" unit which continues to cool food and freeze cubes for extended periods away from dockside power. The deckhouse has a helm seat, a long lounge (both standard) and a sliding door aft. Twin 230 hp V8 engines: speeds to 35 mph. A Command Bridge is optional.



Command bridge and bow rail optional.



## 35' Commander





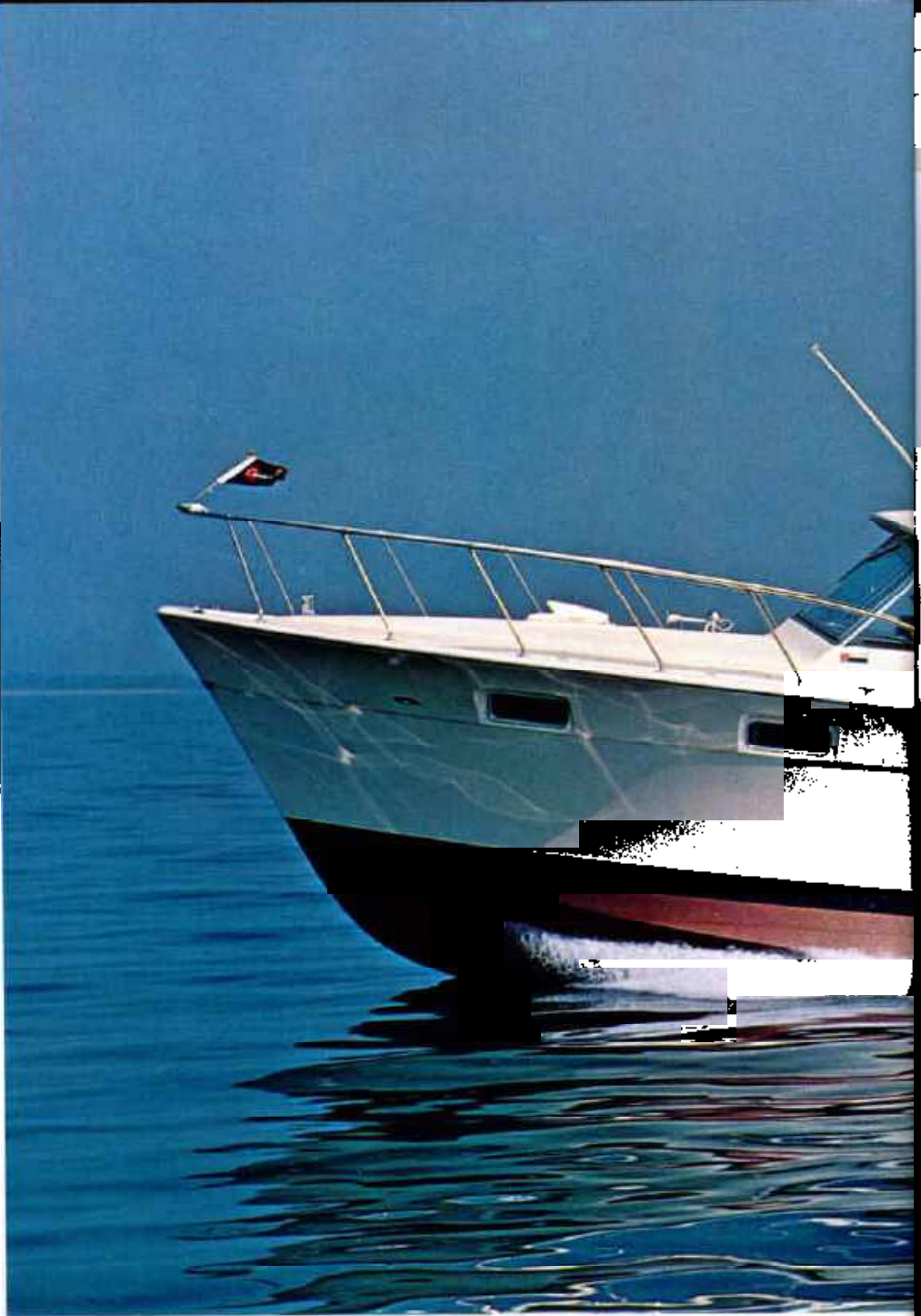
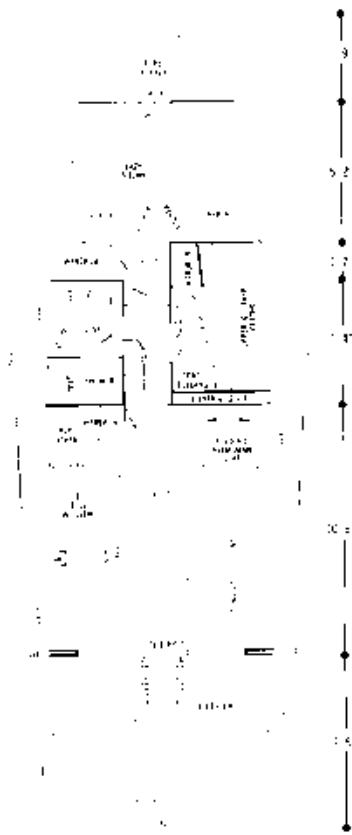
Complete facilities for cruising six, plus outstanding performance have made this one of the most popular Commander models. Standard equipment adding to cruising comfort includes electric refrigerator and range, hot and cold water pressure system, and 115V AC wiring for shore hookup. A new non-absorbent material called polypropylene is standard for berth covers. Thanks to a 13' beam, the main cabin is wide and spacious for entertaining. Decks are in Chris-Craft's now famous teak-pattern fiberglass. Twin 230 hp or 300 hp engines; top speed is 35 mph.

#### **SPECIFICATIONS**

Sleeping Capacity 6  
 Length 35'0"  
 Beam 13'0"  
 Draft 35 1/2"  
 Freeboard, forward 67 1/2"  
 Freeboard, aft 45 1/2"  
 Weight (lbs., estimated) 13,478-13,994  
 Height from waterline (clearance)  
 to top of mast 11'9"  
 Headroom 6'4 1/2"  
 Fuel Capacity, gallons 175  
 Fresh-water Capacity  
 gallons 50  
 Forward, Side and Aft Decks  
 Fiberglass  
 Cockpit Floor Fiberglass

#### **STANDARD EQUIPMENT**

Anchor and Nylon Line  
 Battery Disconnect Switches  
 Bilge Blower  
 Bow Pole and Pennant  
 Carpeting  
 Clecks and Cleats  
 Circuit Breaker Fusing  
 Cockpit Bar, with Gates  
 Cockpit Step  
 Convertible Dinette  
 Deck Hatch, forward,  
 aluminum with vent  
 Dock Lines, nylon  
 Dockside Wiring 115V AC  
 30 amp, 3-wire inlet with  
 shore cable, adaptor and  
 3 wire cabin outlets  
 Draperies  
 Electric Bilge Pump, automatic  
 Electric Horns  
 Fire Extinguishers  
 Foam Cushions & Mattresses  
 Fog Bell  
 Fresh Water Pressure  
 System, Hot and Cold  
 Galley with Stainless Steel  
 Sink, 6.5 cu. ft. Electric  
 Refrigerator and 3-burner  
 Electric Range with oven  
 and rotisserie  
 Handrails in cabin, top & Hardtop  
 Hardtop  
 Helmman and Companion  
 Seats with 16 foam-filled  
 cushions, international lights  
 Life Preservers  
 Lounge, converts to upper  
 and lower berths  
 Mast with Anchor Light  
 Mirror in Lavatory  
 Mooring Bitt with  
 Rope Deck Cleans  
 Mufflers  
 Radio, Ground  
 Screens  
 Shipping Cradle  
 Stern Pole and Bight  
 Sun Lounge, forward deck  
 Toilet, manual  
 Windshield Wipers (2)



**35' Commander Sports Cruiser**







All the advantages of a sportfisherman model—plus those of a luxury sedan—are wrapped up in this brand-new Commander. The boat has two private staterooms. One is forward and features an ingenious "lazy susan" device under the vee-berths which gives you five triangular storage bins 7" deep, accessible one at a time as the unit rotates. A second stateroom is amidships to starboard, opposite a lavatory with a separate stall shower. The deckhouse has a convertible lounge and hi-lo table. The wide Command Bridge is standard. Twin 230 hp or 300 hp V8 engines, the latter delivering 35 mph. Cruise Control is optional.

#### **SPECIFICATIONS**

Sleeping Capacity . . . 6  
 Length . . . 35'0"  
 Beam . . . 13'0"  
 Draft . . . 35½"  
 Freeboard, forward . . . 67½"  
 Freeboard, aft . . . 45½"  
 Weight (lbs., estimated)  
 . . . 13,271-13,890  
 Height, from waterline  
 (clearance)  
 to top of mast . . . 12'6"  
 Headroom . . . 6'5"  
 Fuel Capacity, gallons . . . 250  
 Fresh-water Capacity,  
 gallons . . . 75  
 Decks and Cockpit Floor  
 . . . Fiberglass

#### **STANDARD EQUIPMENT**

Anchor and Nylon Line  
 Battery Disconnect  
 Switches  
 Bilge Blower  
 Bow Pole and Pennant  
 Bow Rail  
 Circuit Breaker Fusing  
 Cockpit Stop  
 Command Bridge  
 Deck Hatch, forward,  
 aluminum with vent  
 Dock Lines, nylon  
 Dockside Wiring 115V AC,  
 30 amp, 3-wire inlet with  
 shore cable, adapter and  
 3-wire cabin outlets  
 Draperies  
 Electric Bilge Pump,  
 automatic  
 Electric Horns  
 Fire Extinguishers  
 Foam Cushions  
 and Mattresses  
 Fog Bell  
 Fresh Water Pressure  
 System, Hot and Cold  
 Galley with Stainless  
 Steel Sink, 6.5 cu. ft.  
 Electric Refrigerator  
 and 3-burner Electric  
 Range with oven  
 and Rotisserie  
 Handrails on Hardtop  
 Helmsman Seat with  
 folding footrest  
 Hi-Lo table  
 Hot Water Heater  
 International Navigation  
 Lights  
 Life Preservers  
 Mirror in Lavatory  
 Mooring Bitt with  
 Rope Deck Opening  
 Mufflers  
 Radio Ground  
 Screens  
 Shipping Cradle  
 Shower  
 Stern Pole and Ensign  
 Toilet, manual  
 Windshield Wipers (2)







## 38' Commander

The model that started a revolution in fiberglass cruisers is in its fifth year of refinements and improvements. Cruise Control, Chris-Craft's unique system of altering trim with faired in tabs, is now standard on all engine options. In the forward section there's the privacy of an enclosed stateroom, with a large wardrobe and adjoining lavatory and shower. A new material, polypropylene, is used for berth covering and other upholstery. It is highly stain and water resistant. The galley has electric appliances, and a cover over the 3-burner electric range provides more counterspace when needed.

Twin 300 hp V8 engines, with speeds to 33 mph, or 197 or 258 hp diesels.



### SPECIFICATIONS

Sleeping Capacity... 6  
 Length... 38'0"  
 Beam... 13'0"  
 Draft... 36"  
 Freeboard, forward... 63"  
 Freeboard, aft... 44"  
 Height from waterline (clearance)  
 to top of mast... 12'0"  
 Height from waterline to top of  
 Command Bridge... 12'7"  
 Weight (lbs., estimated)...  
 16,644-19,272  
 Headroom... 6'4½"  
 Fuel Capacity, gallons... 200  
 Fresh-water Capacity, gallons... 75  
 Forward, Side and Aft Decks... Fiberglass  
 Cockpit Floor... Fiberglass

### STANDARD EQUIPMENT

Anchor and Nylon Line  
 Battery Disconnect Switches  
 Bilge Blower  
 Bow Pole and Pennant  
 Carpeting  
 Chocks and Cleats  
 Circuit Breaker Fusing  
 Compass  
 Convertible Dinette  
 Cruise Controls  
 Deck Hatch, forward, aluminum with vent  
 Dock Lines, nylon  
 Dockside Wiring: 15V AC, 30 amp., 3-wire inlet with shore cable, adapter and 3-wire cabin outlets  
 Draperies  
 Electric Bilge Pump, automatic  
 Electric Horns  
 Fire Extinguishers  
 Foam Cushions & Mattresses  
 Fog Bell  
 Fresh Water Pressure System, Hot and Cold  
 Galley with Stainless Steel Sink, 6.5 cu. ft. Electric Refrigerator and 3 burner Electric Range with oven, rotisserie and stove cover  
 Handrails on cabin top, bow, side and aft decks  
 Hardtop  
 Helmsman and Companion Seats with folding footrests  
 International Navigation Lights  
 Life Preservers: Lounge, converts to upper and lower berths  
 Mast with Anchor Light  
 Mirror in Lavatory  
 Mooring Bitts and Tow Post  
 Mufflers  
 Radio Ground  
 Rope Deck Pipe  
 Screens  
 Shipping Cradle  
 Shower  
 Stern Pole and Ensign  
 Toilet, electric  
 Weather Cloths  
 Windshield Wipers (2)



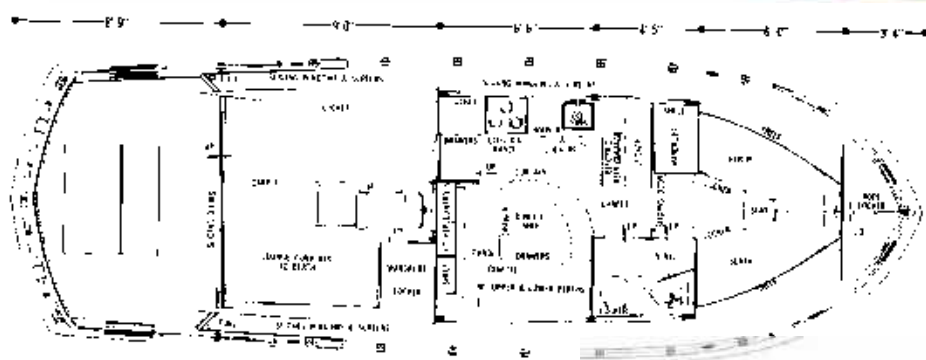


The unique interior layout of this model has become extremely popular with boatmen seeking versatility. The forward stateroom is similar to the standard 38' Commander, but the main cabin features an enormous electric galley, and an L-shaped dinette area which becomes a curtained-off private stateroom at night. The deckhouse has a long convertible lounge, which brings the sleeping capacity to six. Command Bridge optional; Twin 300 hp V8 engines or 197 or 258 hp diesels. Speeds to 33 mph. New standard equipment includes Cruise Control (gas as well as diesel installations), helmsman seat, and windshield wipers.

## 38' Commander Sedan







#### **SPECIFICATIONS**

Sleeping Capacity ... 6  
 Length ... 38'0"  
 Beam ... 13'0"  
 Draft ... 36"  
 Freeboard, forward ... 63"  
 Freeboard, aft ... 44"  
 Height from waterline (clearance) to top of mast ... 12'0"  
 Height from waterline to top of Command Bridge ... 12'7"  
 Weight (lbs., estimated) ... 18,580-21,200  
 Headroom ... 6'4 1/2"  
 Fuel Capacity, gallons ... 200  
 Fresh-water Capacity, gal. ... 75  
 Forward, Side and Aft Decks ... Fiberglass  
 Cockpit Floor ... Fiberglass

#### **STANDARD EQUIPMENT**

Anchor and Nylon Line  
 Battery Disconnect Switches  
 Battery Paralleling Switch — Std on diesel models only  
 Bilge Blower  
 Bow Pole and Pannant  
 Carpeting  
 Chocks and Cleats  
 Cockpit Paneling  
 Cockpit Rail with Gates  
 Compass  
 Convertible Dinette  
 Cruise Controls  
 Deck Hatch, forward, aluminum with vent  
 Deck Lines, nylon  
 Dockside Wiring 115V AC, 30 amp, 3-wire inlet with shore cable, circuit breakers, adapter and 3-wire cabin outlets  
 Draperies  
 Electric Bilge Pump, automatic  
 Electric Horns  
 Fire Extinguishers  
 Foam Cushions & Mattresses  
 Fog Bell  
 Fresh Water Pressure System, Hot and Cold  
 Galley with Stainless Steel Sink, 6.5 cu ft Electric Refrigerator and 3-burner Electric Range with oven, rotisserie and stove cover  
 Handrails on cabin top, hardtop, bow and side decks  
 Hardtop  
 Helmsman Seat  
 International Navigation Lights  
 Life Preservers  
 Lounge, converts to berths  
 Mast with Anchor Light  
 Mirror in Lavatory  
 Mooring Bitts and Tow Post  
 Mufflers  
 Radio-Ground  
 Rope Deck Pipe  
 Screens  
 Shipping Cradle  
 Shower  
 Sliding Doors, Aft end of Deckhouse  
 Stem Pole and Ensign  
 Toilet, electric  
 Weather Cloths  
 Windshield Wipers (3)

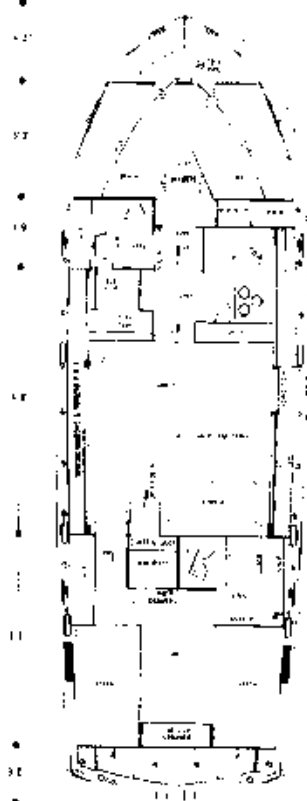






## 42' Commander

Chris-Craft's classic double-cabin flybridge design is enhanced by new interior design features and added standard equipment. The galley has been redesigned to place the refrigerator across the companionway on the port side, adding considerable space on the starboard. Among amenities added for 1969 are a stereo system and an upholstered chair and dropleaf table for the salon. The salon also has a lounge converting to sleep two. The large master stateroom has adjoining lavatory with separate stall shower. A hardtop is optional. 300 hp V8's provide 29 mph; also available with 258 hp diesels. Cruise control is now standard for gas as well as diesel power.

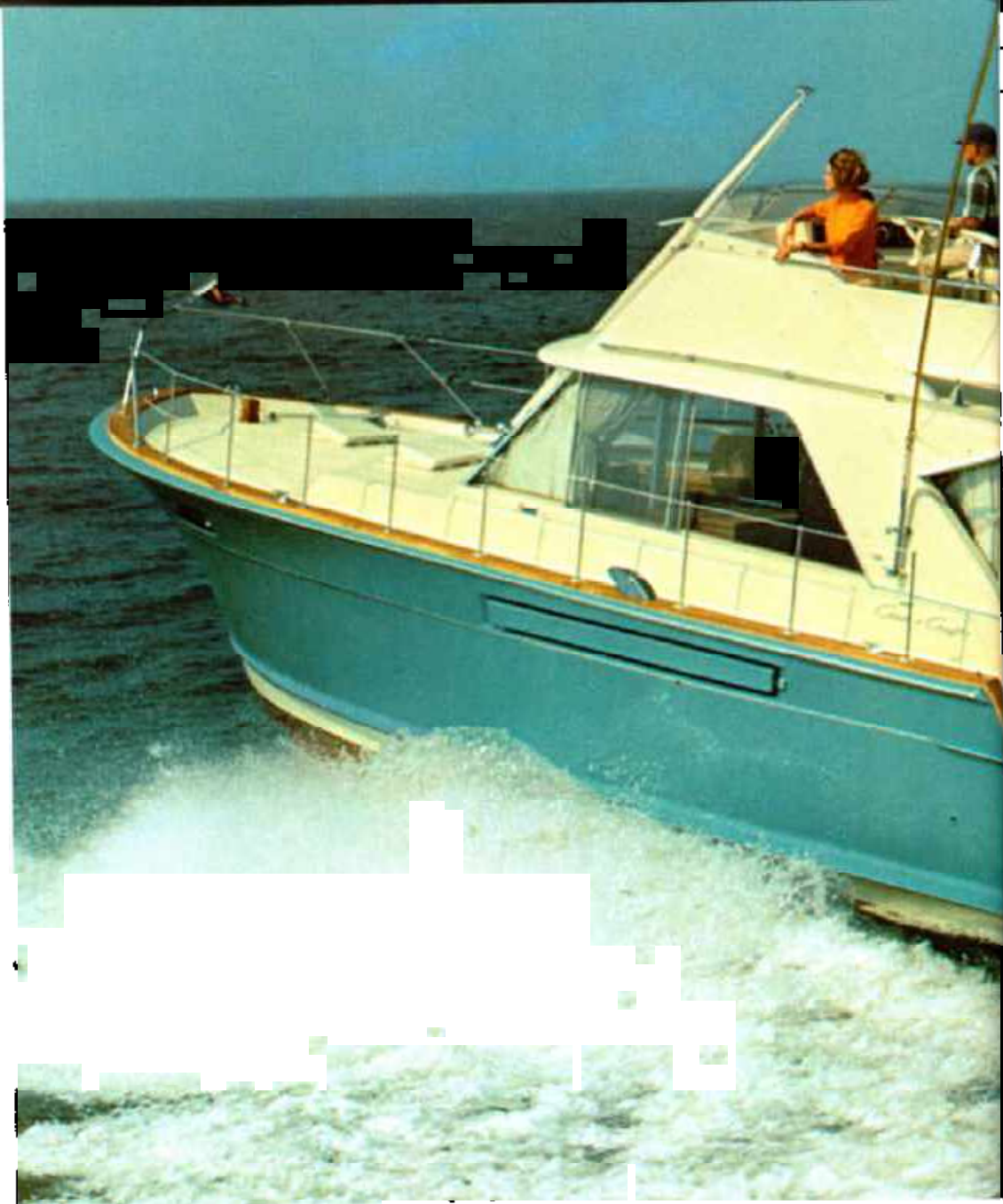


### SPECIFICATIONS

Sleeping Capacity ... 6  
 Length 42'0"  
 Beam ... 13'0"  
 Draft ... 37 1/2"  
 Freeboard, forward, 76 3/4"  
 Freeboard, aft, 55"  
 Weight (lbs., estimated) ...  
 22,443-25,621  
 Height from waterline (clearance)  
 with mast down ... 14'11"  
 Headroom ... 6'3"  
 Fuel Capacity, gallons ... 250  
 Fresh-water Capacity, gal. ... 70  
 Forward, Side and  
 Aft Decks ... Fiberglass  
 Sundeck Floor ... Fiberglass

### STANDARD EQUIPMENT

Alarm System, engine,  
 oil and water  
 Anchor and Nylon Line  
 Battery Disconnect Switches  
 Battery Paralleling Switch  
 Bedspreads  
 Bilge Blower  
 Bow Pole and Pennant  
 Carpeting  
 Chocks and Cleats  
 Circuit Breaker Fusing  
 Compass  
 Cruise Controls  
 Deck Hatch, aft  
 Deck Hatch, fwd.  
 aluminum with vent  
 Dock Lines, nylon  
 Dockside Wiring 115V AC,  
 30 amp, 3 wire inlets with  
 shore cable, adapter and  
 3-wire cabin outlets  
 Draperies  
 Electric Bilge Pump, automatic  
 Electric Horns  
 Fire Extinguishers  
 Foam Cushions and Mattresses  
 Fog Bell  
 Fresh Water Pressure  
 System, Hot and Cold  
 Folding Top with Side Curtains  
 Galley with Stainless Steel  
 Sink, 10 cu. ft. Electric  
 Refrigerator and 3 burner  
 Electric Range with oven,  
 rotisserie and stove cover  
 Handrails on cabin top, bow,  
 side and sun decks  
 Helm'sman Seat, stool type  
 Hi-Lo drop leaf table  
 International Navigation Lights  
 Life Preservers  
 Lounge, converts to double bed  
 Mast with Anchor Light  
 Mirrors in Lavatory  
 Mooring Bitts and Tow Post  
 Mufflers  
 Radio Ground  
 Rope Deck Pipe  
 Screens  
 Shipping Cradle  
 Shower  
 Stern Pole and Ensign  
 Stereo  
 Sun Deck rail gates  
 Sun Lounge, forward deck,  
 with cushions  
 Toilets, electric (2)  
 Upholstered Occasional Chair  
 Windshield Wipers (3)  
 Windshield Opener, electric



Introduced last year, the model was acclaimed by cruising men and fishermen alike. Fishermen favored its standard Command Bridge, low freeboard aft, and big fishing cockpit. Cruising men appreciated its functional design featuring two private staterooms, a lavatory with enclosed stall shower forward, and spacious enclosed deckhouse aft. This year's refinements include a recessed electric refrigerator in the redesigned galley, which is only a step below the deckhouse salon, and new standard equipment including a stereo system, electric windshield wipers, an upholstered deckhouse chair, and Cruise Control. The restyled deckhouse has a convertible L-shaped lounge aft and a coffee table that may be raised to dining height. Twin 300 hp V8 or 258 hp diesel engines, speeds to 29 mph.



## 42' Commander Sports Cruiser





#### SPECIFICATIONS

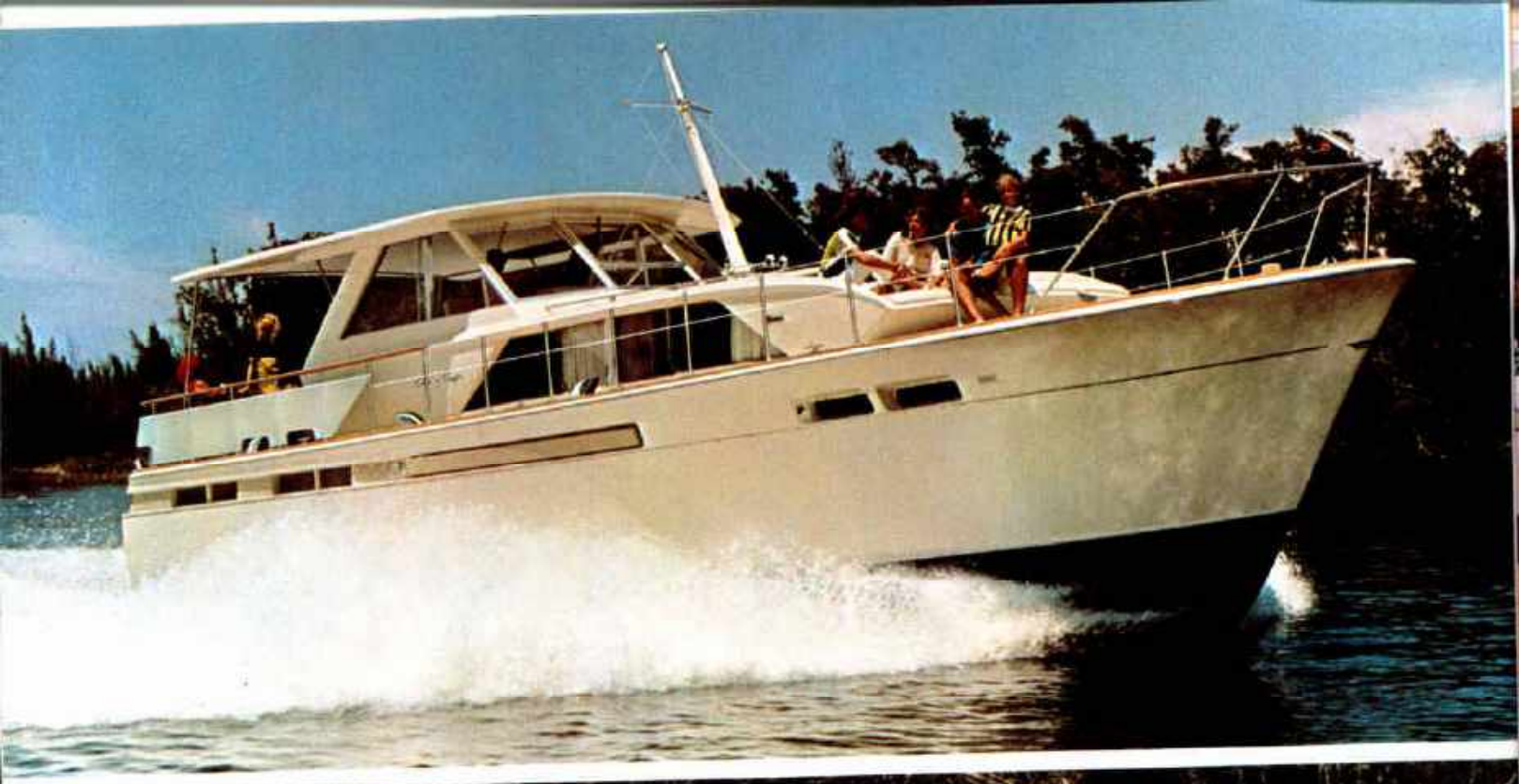
Sleeping Capacity ... 6  
 Length ... 42'0"  
 Beam ... 13'0"  
 Draft ... 37 1/2"  
 Freeboard, forward ... 76 3/4"  
 Freeboard, aft ... 44"  
 Height from waterline (clearance)  
 without mast ... 13'1 1/2"  
 with mast ... 15'4 1/2"  
 Headroom ... 6'4"  
 Weight (Inc. est.) ... 22,443 75,621  
 Fuel Capacity, gallons ... 300  
 Fresh-water Capacity, gal. ... 150  
 Forward and Side Decks ... Fiberglass  
 Aft Deck ... Teak  
 Cockpit Floor ... Vinyl-covered

#### STANDARD EQUIPMENT

Alarm System, engine,  
 oil and water  
 Anchor and Nylon Line  
 Battery Disconnect Switches  
 Battery Paralleling Switch  
 Bilge Blower  
 Bow Pole and Venturi  
 Carpeting  
 Cleeks and Cleats  
 Circuit Breaker Fusing  
 Cockpit Paneling  
 Cockpit Step  
 Command Bridge with dual controls,  
 seat and weather cloth  
 Compasses upper & lower stations  
 Cruise Controls  
 Deck Hatch, forward,  
 aluminum with vent  
 Deck Lines, nylon  
 Decks, Te W/ing, 115V AC, 30 amp,  
 3-wire inlets, P&S with shore  
 cable, adapter and 3-wire  
 cabin outlets  
 Draperies  
 Electric Bilge Pump, automatic  
 Electric Horns  
 Fire Extinguishers  
 Foam Cushions & Mattresses  
 Fog Bell  
 Fresh Water Pressure System,  
 Hot and Cold  
 Galley with Stainless Steel  
 Sink, 1'0 cu. ft. Electric  
 Refrigerator and 3 burner  
 Electric Range with oven,  
 rotisserie and stove cover  
 Handrails on handtop,  
 bow and side decks  
 Hardtop with ventilating windsheld  
 and sliding side shields  
 Helm'sman Seat with  
 folding footrest  
 Hi-Lo drop leaf table  
 International Navigation Lights  
 Life Preservers  
 L-shaped Convertible Lounge,  
 main salon  
 Lounge, converts to  
 upper and lower berths  
 Mast with Anchor Light  
 Mirrors in Lavatory  
 Tow Post  
 Mufflers  
 Radio Ground  
 Rope Deck Pipe  
 Screens  
 Shipping Cradle  
 Shower  
 Sliding Doors, Aft, main salon  
 Stern Pole and Ensign  
 Stereo  
 Toilet, electric  
 Upholstered Occasional Chair  
 Windshield Wipers (2)







**47' Commander** This luxury vessel provides elegant accommodations for those who enjoy leisurely cruising. Some new touches: the fiberglass hardtop now extends farther aft for more protection. A stereo system and a helmsman's seat are standard. The aft section is available with: A) A single oversize stateroom; B) A large double stateroom and a compact guest stateroom close by (optional). Both plans are served by a big lavatory with standard stall shower. The single stateroom version sleeps 8, the other 10. In the main salon, a lounge converts to a full-size bed. Another double stateroom is forward, with a lavatory and private entrance hatch. A large hold for luggage, provisions, etc. is under the galley-dinette area. Twin Chris-Craft 300-hp V8 engines or twin 258 hp diesels; speeds to 25 mph. Cruise Control standard. Command Bridge optional.



Double stateroom version.



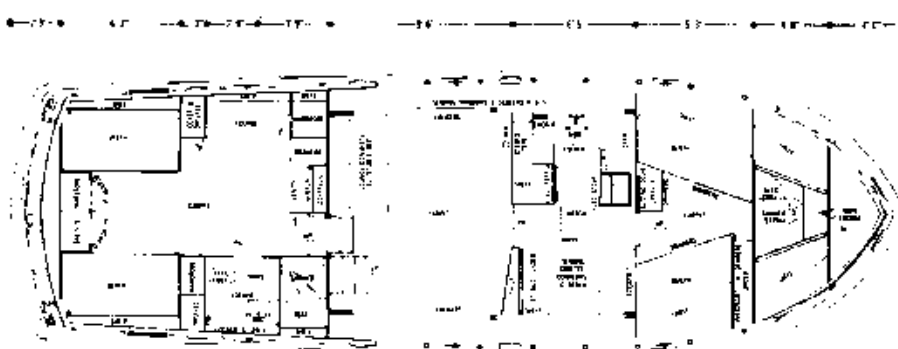


**SPECIFICATIONS**

Sleeping Capacity... 8 - 10  
 Length... 47'0"  
 Beam... 15'0"  
 Draft... 38"  
 Freeboard, forward... 89 1/2"  
 Freeboard, aft... 70"  
 Height from waterline  
 (clearance) including  
 anchor light... 15'5"  
 Weight (lbs., estimated)  
 ... 30,451 - 33,539  
 Headroom... 6'4"  
 Fuel Capacity, gallons... 350  
 Fresh-water Capacity, gal... 80  
 Forward, Side and Aft  
 Decks... Fiberglass

**STANDARD EQUIPMENT**

Alarm System,  
 engine, oil and water  
 Anchor and Nylon Line  
 Battery Disconnect Switches  
 Battery Paralleling Switch  
 Bedspreads  
 Bilge Blower  
 Bow Pole and Pennant  
 Carpeting  
 Chocks and Cleats  
 Circuit Breaker Fusing  
 Cockpit Paneling  
 Compass  
 Convertible Dinette  
 Cruise Controls  
 Deck Hatch, forward,  
 aluminum with vent  
 Dish Locker  
 Dock Lines, nylon  
 Dockside Wiring 115V AC,  
 30 amp, 3-wire inlets with  
 shore cable, adapter and  
 3-wire cabin outlets  
 Draperies  
 Electric Bilge Pump, automatic (2)  
 Electric Horns  
 Fire Extinguishers  
 Foam Cushions and Mattresses  
 Fog Ball  
 Fresh Water Pressure  
 System, Hot and Cold  
 Galley Blower  
 Galley with Stainless Steel  
 Sink, 10 cu. ft. Electric  
 Refrigerator and 3 burner  
 Electric Range with oven,  
 rotisserie and stove cover  
 Handrails on cabin top, bow,  
 side and aft decks  
 Hardtop extended with  
 Ventilating Windshield  
 and Sliding Side Shields  
 International Navigation Lights  
 Life Preservers  
 Lounge, converts to double bed  
 Mast with Anchor Light  
 Mirrors in Master  
 Stateroom and Lavatories  
 Mooring Bits and Tow Post  
 Mufflers  
 Pilot Seat with arms  
 Radio Ground  
 Rope Deck Pipe  
 Screens  
 Shower  
 Stern Pole and Ensign  
 Stereo Tape Deck  
 Sun Lounge, forward deck,  
 with cushions  
 Toilets, electric (2)  
 Upholstered Occasional Chair  
 Weather Cloths  
 Windshield Wipers (3)  
 Windshield Opener, electric



Single stateroom version.





## **47' Commander with Fishing Cockpit.**

Combines the luxury of a double cabin cruiser with facilities for deep sea fishing. A large master stateroom has an adjoining lavatory and a separate stall shower. The salon has a convertible lounge, and a stereo tape deck is standard. The forward stateroom also has an adjoining lavatory. A convertible dinette (opposite the all-electric galley) brings total sleeping capacity to 8. Command Bridge and dual controls are standard. Twin 300-hp V8's or diesels; speeds to 25 mph.



## **60' Motor Yacht**

As would be expected of a yacht of this size and concept, every amenity for luxurious cruising is embodied in its design. Standard equipment includes air conditioning, built-in stereo and color TV, dishwasher, and two 15-KW light plants, to provide more than ample power for the yacht's extensive electrical equipment. Diesel powered. An alternate version provides an enclosed deckhouse. Interiors may be customized to suit the owner. For additional information, write Custom Yacht Division, Chris-Craft Corporation, Pompano Beach, Florida 33061, or call (305) 933-4411.



## Chris-Craft's testing methods assure highest quality fiberglass.



Fiberglass gets slammed, shaken, pressed, pulled, bent, scratched, soaked, steamed, and burned in Chris-Craft's Research Center in an effort to build better fiberglass hulls for Chris-Craft Commanders.

When the fiberglass boatbuilding program began, few machines for testing fiberglass existed. So Chris-Craft designed some and adapted other devices built for other purposes. Now a full laboratory of equipment keeps building standards high, and new testing machines are constantly being developed.

Here are some of the ways that Chris-Craft tests fiberglass:

1. Color-fading tests are carried out in high intensity ultraviolet light Fade-O-Meters at independent testing laboratories. Although accelerated weathering tests are given, the findings are not relied on solely, but are verified with prolonged outdoor exposure tests to natural sunlight and salt-laden humidity. Color fastness and deterioration of gelcoats can be studied this way.

2. Another gelcoat test is given by a machine that strikes a gelcoated fiberglass laminate sample from the layup side. If the front surface cracks or crazes, the gelcoat formula is rejected.

3. Another machine resembles a record player. The arm is weighted and a diamond stylus moves across the gelcoat sample. If the needle-sharp point scratches the gelcoat, it is rejected. At this time, only two manufacturers produce gelcoats which meet Chris-Craft's requirements.

4. Fatigue, the weakening which occurs after prolonged flexing, is measured in laminate samples on another Chris-Craft testing machine. If the fiberglass shows no measurable decrease in strength after 1½ million flexing cycles, it is acceptable.

5. A Salt Spray Chamber creates hot salt vapor steamier than any tropic swamp, which accelerates the destructive effects of humid, salty air on boats.

6. The burn-out. Pieces taken from through-hull fittings of production boats are weighed, then placed in a 1450° oven where the resin is burned away. The fiberglass reinforcement, which does not burn, is weighed afterwards to determine the ratio of fiberglass to resin. The more fiberglass contained in the resin, the stronger the laminate. The scales used are

accurate to one five-millionth of a pound.

Other torture machines compress, pull, and bend fiberglass to find the breaking points. In general, Chris-Craft requires 3 times the strength indicated for a given anticipated load, and certain key points receive reinforcement far exceeding this.

Many boatmen are surprised to learn that an inferior fiberglass laminate may absorb as much as 10% of its weight in water, which can cause as much as 50% loss of strength. In many cases, the sizing used to hold resin and fiberglass together is too absorbent. And sometimes a poor gelcoat is at fault.

For this reason, Chris-Craft specifies non-porous gelcoats, inspected for microscopic pinholes with high-power 3-dimensional microscopes. Chris-Craft also chooses sizings with high resistance to moisture. Present Chris-Craft standards call for laminates with less than 1/10 of 1% of their weight in water absorption, and with not more than a 5% loss of strength. Chris-Craft is thus able to keep well within its own safety factor of 3 or more times anticipated load.

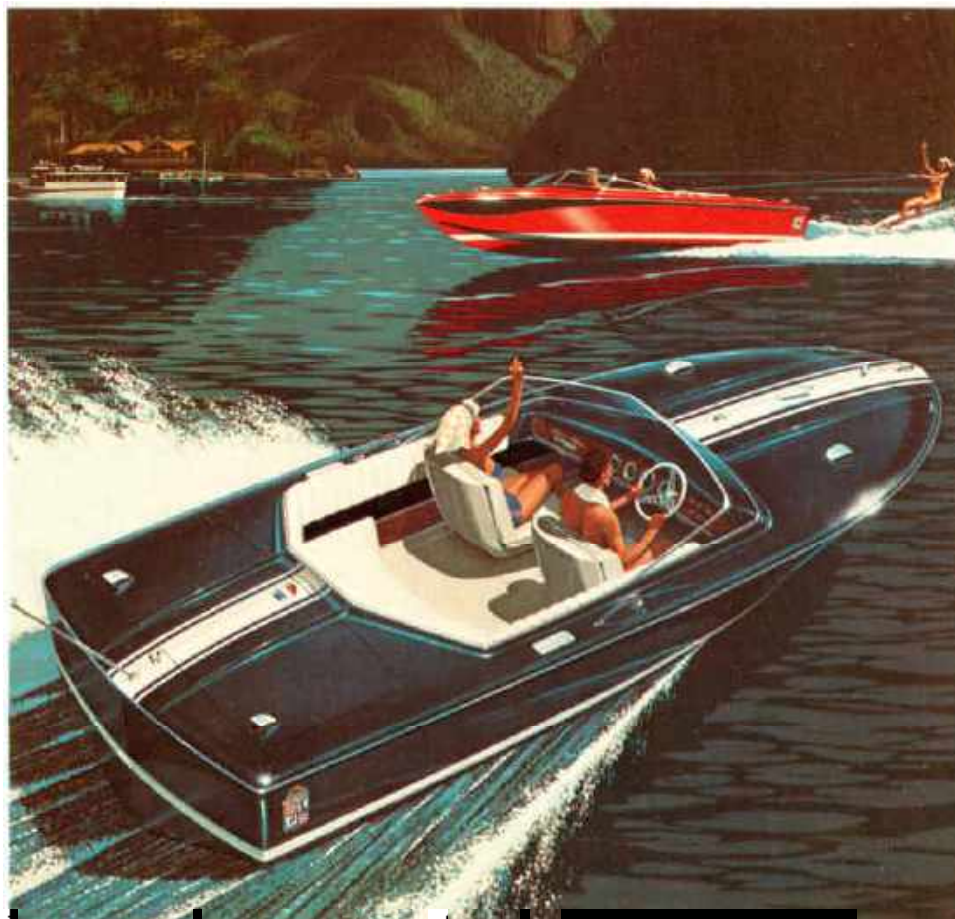
Because of their hardness, gloss, and resistance to crazing, Chris-Craft gelcoats are not painted (except for anti-fouling paint below the waterline). And with proper maintenance, Commander hullsides and superstructures should never need painting.

By starting with the very basic elements of fiberglass construction, Chris-Craft is able to improve quality control throughout all the steps in the manufacture of a fiberglass pleasure boat.

### Every Commander has these important safety features

At least two exits from every cruiser cabin  
Safety glass windshields • At least 4 bilge ventilators, with a minimum of one square inch of opening on each ventilator for each foot of beam (exceeds Coast Guard regulations)  
Cabintop handrails fastened with bolts, not screws • Fuel tank overflow pipes drain overboard • Special anti-siphoning device keeps fuel from draining out of gasoline tank when fuel line is disconnected • Cockpit railings at least 28 inches high • Full visibility from pilot station at planing angles.

## Two super-luxurious inboard Custom Sport Boats for 1969



Be sure to ask your dealer about these two exciting Custom Sport Boats, the 19' Commander Super Sport and the sleek 23' Super Sport. Both have the famous high-performance Jim Wynn-designed bottom, designed for both speed and stability, and the cockpits are the most lavish on the water. V8 powered through V-drive units.



*Chris-Craft*®

CHRIS-CRAFT CORPORATION,  
POMPANO BEACH, FLORIDA 33061

### Warranty

For the first 24 months or 400 hours of operation, whichever comes first, Chris-Craft Corporation will repair or replace, at its option, parts defective by reason of faulty workmanship or material returned to the selling dealer with transportation charges to the point of manufacture. For the first 12 months or 200 hours of operation, whichever comes first, Chris-Craft will pay the labor costs as determined by its schedule for removal and reinstallation of such parts. Chris-Craft does not warrant used boats or engines, coatings, platings, furnishings, metal discoloration, racing boats or engines, altered boats or parts or speeds, and makes no other warranties, express or implied.

### Notes pertaining to all models:

All prices are F.O.B. factory and include shipping cradle except on the 47' and 60' Commanders which cannot be shipped by rail or truck due to clearances, but may be shipped via waterways and steamship to all ports of the world. Chris-Craft engines are installed unless otherwise specified by purchaser. Speeds shown herein are obtained either by actual tests or are estimates based on engineering calculations. The test is conducted over a certified course with fuel and water tanks two-thirds full, a driver only, and is averaged in two directions, with and against the wind and current.

The stated speed is based on the maximum horsepower specified for each new boat at full throttle operation.

Model lengths are stated to the exact foot (except for the 60' Commander, which is 60'10").

Prices and specifications contained in this literature are based on the latest product information available at the time of publication approval. The right is reserved to make changes at any time without notice in prices, colors, materials, equipment, specifications, and models and also to discontinue models. Equipment and accessories pictured but not included in the list of standard equipment items will be furnished at extra cost if available. Approved accessories for factory installation are available; for details see Accessory Price List.

Irrespective of the place of manufacture the right is reserved to ship from any Chris-Craft factory. All orders accepted subject to prices prevailing at time of shipment. All boat weights shown in specifications are estimated and do not include shipping cradle.

All 1969 Commander models meet the Coast Guard regulations established for international navigation lights effective Sept. 1, 1965.