

1971 Chris Craft Commander catalog. First year of the second generation 38 Commander with the Wide-Body cabin configuration. Also two pages on their Integrated Marine Electronic System. Both way ahead of their time.



CHRIS-CRAFT COMMANDER





38' Commander



# COMMANDER by CHRIS-CRAFT

The Commander® series is the most beautifully built and extravagantly appointed line of cruisers in the world of power boating. The Commander hull was designed to take advantage of the unique qualities of fiberglass—incredible strength-to-weight ratio and ease of maintenance.

The most revolutionary advancement in marine electronics is the Chris-Craft Inte-

grated Marine Electronic System. In one easy-to-operate package on the Command Console of cruisers 35' to 42', the Commander owner gets a 100 watt 6-channel AM radio-telephone, a dual range depth sounder, radio ground, antenna, engine shielding for interference-free communications, electronic loud hailer, and pre-wiring for a VHF/FM radio telephone and automatic pilot for the most economical future installation of this equipment.

Like all Chris-Craft boats, Commander models have a second-to-none resale value and are protected by the unique Chris-Craft warranty which extends for two years on parts and one year on labor.



42' Commander

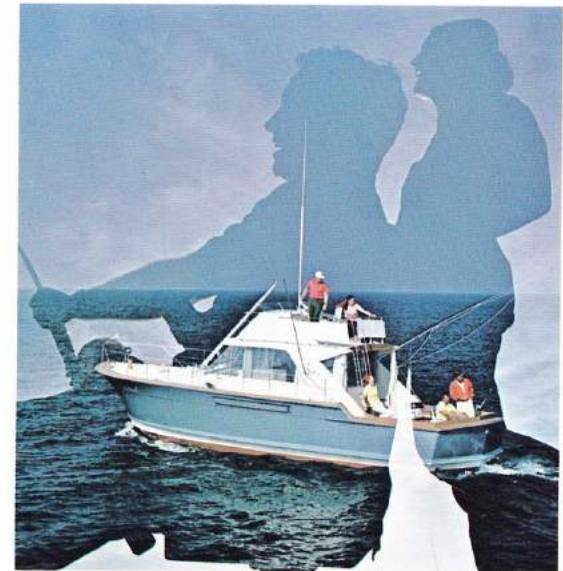


38' Commander cabin looking forward





31' Commander Sedan with optional Command Bridge®



42' Commander Sports Cruiser





38' Commander Sedan with optional Command Bridge®



# 31' COMMANDER

This fiberglass cruiser is a classic Commander inside and out.

The L-shaped galley has room for a 6.5 cubic foot refrigerator, electric range and storage space to make cooking a delight.

With private forward stateroom, convertible dinette and convertible lounge, you get not only convenience but sleeping accommodations for six. Couple all this with the huge open cockpit and you have the versatile, ever-popular 31' Commander.



31' Commander shown with optional hardtop

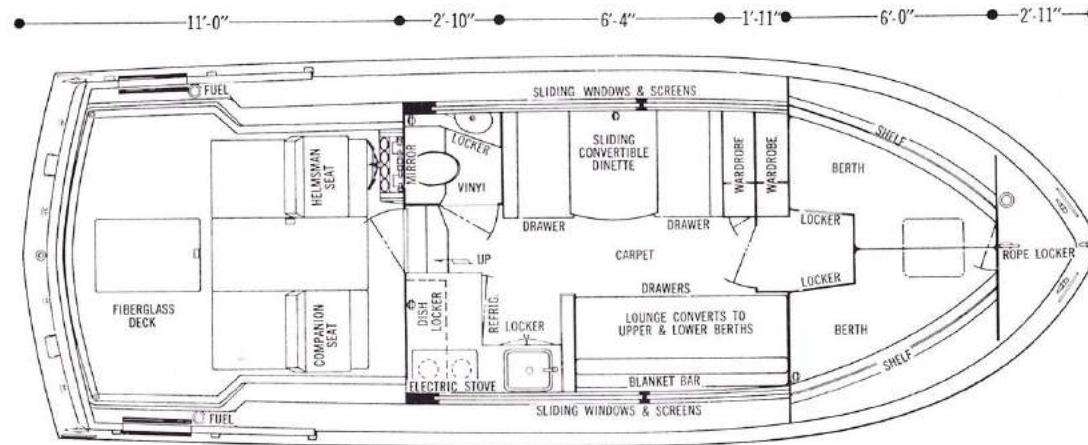
**SPECIFICATIONS**

Sleeping Capacity .....	6
Length .....	31'-0"
Beam .....	11'-3 1/4"
Draft .....	27 3/4"
Freeboard, forward .....	54 3/4"
Freeboard, aft .....	37"
Weight (lbs. displacement, est.) .....	10,389
Height from waterline (clearance)	
to top of mast .....	10'-10"
to top of optional command bridge .....	12'-9"
Fuel Capacity, gallons .....	100
Fresh-Water Capacity, gallons .....	25
Forward, Side and Aft Decks .....	Fiberglass
Cockpit Floor .....	Fiberglass



**STANDARD EQUIPMENT**

Anchor and Nylon Line • Battery Disconnect Switches • Battery Paralleling Switch • Bilge Blower • Bilge Pump, automatic • Bow Pole • Carpeting • Circuit Breaker Fusing • Cockpit Rail with Gates • Deck Hatch forward with vent • Dock Lines, nylon • Dockside Wiring, 115V AC, 30 amp, 3-wire inlet with shore cable, adapter and ample 3-wire cabin outlets • Draperies • Fire Extinguishers (2) • Fog Bell • Fresh Water Pressure • Fuel Gauge • Galley with Electric Stove, Stainless Steel Sink and 6.5 cu. ft. Electric Refrigerator-Freezer • Handrails on Cabin Top, Bow and Side Decks • Helmsman and Companion Seats with folding footrests • Horn, electric • Life Preservers (6) • Lounge, converts to upper and lower berths • Mast with Anchor Light • Mirror in lavatory • Mufflers • Navigation Lights, International • Screens • Shipping Cradle • Stern Pole and Flag • Toilet, Manual • Weathercloths, aft rail • Windshield Wipers (2).





# 31' COMMANDER SEDAN

When we applied the sedan concept to the 31' Commander fiberglass hull, we came up with a "first" in powerboating — the luxury and interior spaciousness of a cruiser and the speed and maneuverability of a sport boat.

In the luxury department you'll find three separate sleeping areas accommodating six in comfort. The well-appointed head has a shower. Storage space is ample throughout.

Sum total — a great family cruising boat!



31' Commander Sedan shown with optional Command Bridge®



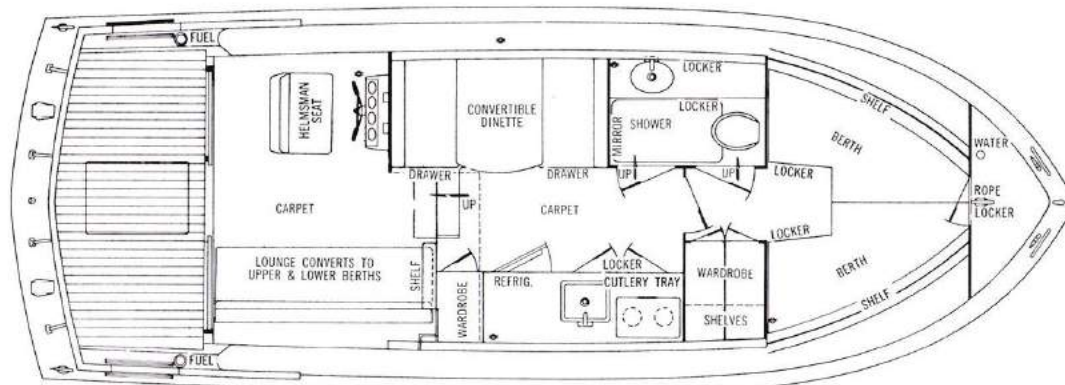


#### SPECIFICATIONS

Sleeping Capacity .....	6
Length .....	31'-0"
Beam .....	11'-3 1/4"
Draft .....	27 3/4"
Freeboard, forward .....	54 3/4"
Freeboard, aft .....	37"
Height from waterline (clearance)	
to top of mast .....	10'-9"
to top of optional command bridge.....	12'-10"
Weight (lbs. displacement, est.) .....	10,801
Fuel Capacity, gallons .....	100
Fresh-Water Capacity, gallons .....	25
Decks and Cockpit Floor .....	Fiberglass



5'-10"      5'-2"      6'-4"      4'-8"      6'-0"      3'-0"



#### STANDARD EQUIPMENT

Anchor and Nylon Line • Battery Disconnect Switches • Battery Paralleling Switch • Bilge Blower • Bilge Pump, automatic • Bow Pole • Carpeting • Circuit Breaker Fusing • Cockpit Rail with Gates and Weather Cloths • Deck Hatch, forward • Dock Lines, nylon • Dockside Wiring 115V AC, 30 amp, 3-wire inlets with shore cable, adapter and ample 3-wire cabin outlets • Draperies • Fire Extinguishers (2) • Fog Bell • Fresh Water Pressure System, Hot and Cold • Fuel Gauge • Galley with Stainless Steel Sink, 2-burner Electric Stove, 115V Refrigerator-Freezer • Handrails on Cabin Top, hardtop, bow and side decks • Helmsman Seat with Folding foot rest • Horn, electric • Life Preservers (6) • Mirror in Lavatory • Mufflers • Navigation Lights, International • Screens • Shipping Cradle • Shower • Stern Pole and Flag • Toilet, manual • Ventilating Windshield • Windshield Wipers (2).





## 31' COMMANDER SPORTS CRUISER

This fiberglass Commander is not only a sport fishing boat, she's a sport fisherman with style and an overall feeling of total livability given by a smartly tailored interior.

A bulkhead with door to enclose the area under the hardtop is optional. Add it and you've got an enclosed-deckhouse cruiser.

For sport fishermen, for commuters, or for weekend cruisers — this is the boat that can do everything. And do it with speed, comfort and style.



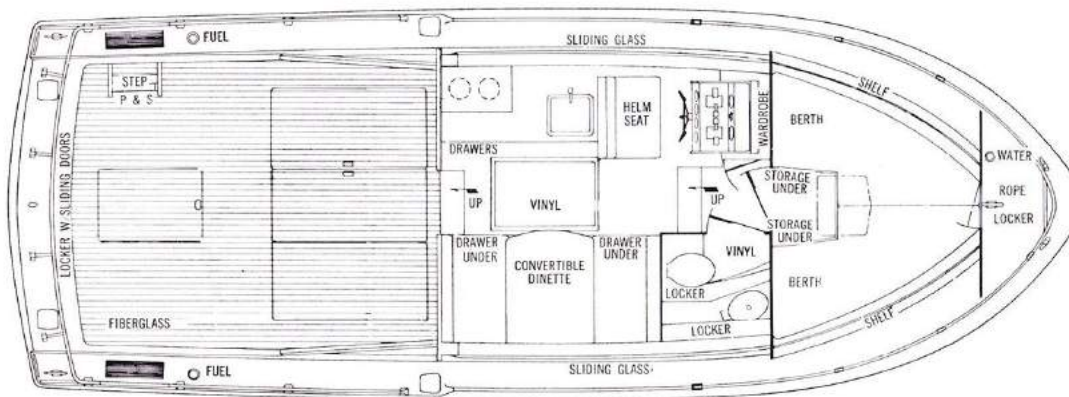




#### SPECIFICATIONS

Sleeping Capacity .....	4
Length .....	31'-0"
Beam .....	11'-3 1/4"
Draft .....	3 1/4"
Freeboard, forward .....	54 1/2"
Freeboard, aft .....	37"
Height from waterline (clearance)	
to top of mast .....	9'-3"
to top of optional command bridge .....	11'-4"
Weight (lbs. displacement, est.) .....	9,893
Fuel Capacity, gallons .....	150
Fresh-Water Capacity, gallons .....	25
Forward, Side and Aft Decks .....	Fiberglass
Cockpit Floor .....	Fiberglass

● 1'-10" ● 10'-7" ● 6'-5" ● 3'-2" ● 6'-0" ● 2'-11" ●



#### STANDARD EQUIPMENT

Anchor and Nylon Line • Battery Disconnect Switches • Battery Paralleling Switch • Bilge Blower • Bilge Pump, automatic • Bow Pole • Circuit Breaker Fusing • Cockpit Rail with Gates • Convertible Dinette • Deck Hatch, forward • Dock Lines, nylon • Dockside Wiring, 115V AC, 30 amp, 3-wire inlet with shore cable, adapter and 3-wire cabin outlets • Exhaust Fan in lavatory • Fire Extinguishers (2) • Fog Bell • Fresh Water Pressure • Fuel Gauges • Galley with Stainless Steel Sink, Alcohol Stove, 6.2 cu. ft. Ice Box • Handrails on cabin top • Hardtop with Ventilating Windshield and Sliding Glass Side Shields • Helmsman Seat with folding foot rest • Horn, electric • Life Preservers (4) • Anchor Light • Mirror in lavatory • Mufflers • Navigation Lights, International • Shipping Cradle • Stern Pole and Flag • Toilet, manual • Windshield Wipers (2).



## 35' COMMANDER

The 35' Commander is the most advanced fiberglass boat in her size range. Standard in this model is the revolutionary new Integrated Marine Electronic System with Chris-Craft engineered dual range depth sounder, 100 watt AM radio-telephone, electronic loud hailer, engine shielding, and prewiring for VHF/FM radio-telephone and autopilot. The engine controls, gauges and switches, as well as the radio, are human engineered for ease of operation. Trim Control, with indicators, and rudder angle indicator are standard.

There's sleeping room for six, and headroom that gives six-footers almost five inches to spare. Styling and a well coordinated interior make this Commander live like a house and look like a yacht.

In short, the 35' Commander is a no-nonsense boat.



### 35' COMMANDER "SPECIAL"

The Commander "Special" is identical in every respect to the regular Commander except for certain standard equipment. The hull, cabin, engines, fittings, finish and decor are exactly the same in both models. The objective in offering a "Special" boat is to permit an owner to equip his boat with those features which are appropriate to the water and climate of his boating locale. The ultimate benefit to the buyer is that he can enjoy the performance and accommodation advantages of the regular Commander, but only pay for that equipment which will contribute to his personal comfort and convenience.



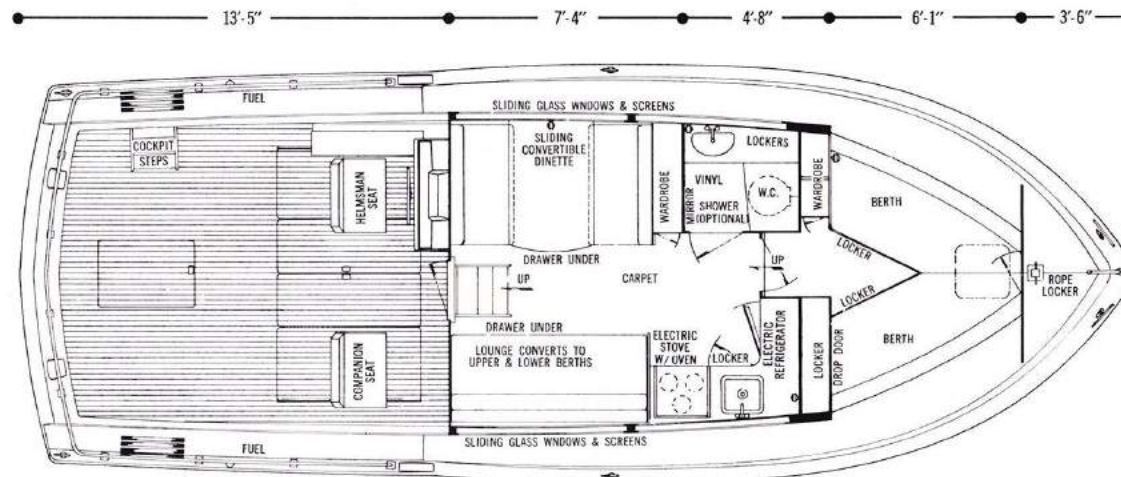
### SPECIFICATIONS

Sleeping Capacity .....	6
Length .....	35'-0"
Beam .....	13'-0"
Draft .....	35½"
Freeboard, forward .....	66"
Freeboard, aft .....	44½"
Weight (lbs. displacement, est.) .....	14,344
Height from waterline (clearance)	
to top of mast .....	11'-5"
To top of optional command bridge .....	13'-5½"
Fuel Capacity, gallons .....	230 (175 diesel)
Fresh-water Capacity, gallons .....	55
Forward, Side and Aft Decks .....	Fiberglass
Cockpit Floor .....	Fiberglass



### STANDARD EQUIPMENT

Anchor, Line, Chocks and Deck Pipe • Battery Disconnect Switches • Battery Paralleling Switch • Bilge Blower • Bilge Pump, automatic • Bow Pole • Carpeting • Circuit Breaker Fusing • Cockpit Rail with Gates • Deck Hardware including Mooring Bitt and Cleats • Deck Hatch, forward, with vent • Dock Lines, nylon • Dock-side Wiring 115V AC, 30 amp, 3-wire inlet with shore cable, adapter and ample 3-wire cabin outlets • Draperies • Electronics: Installation includes Depth Sounder, 100-watt AM Radio-Telephone, Electric Hailer, Antenna, Transducer, Radio Ground, Engine Shielding, Custom Cabling and Back-Lighted Night-Adapted Panels • Fire Extinguishers (2) • Fog Bell • Fresh Water Pressure System, Hot and Cold • Fuel Gauge • Galley with Stainless Steel Sink, 6.5 cu. ft. Electric Refrigerator-Freezer and 3-burner Electric Range with oven and Rotisserie • Handrails on cabin top, hardtop, bow and side decks • Hardtop with ventilating Windshield and Sliding Glass Side Shields • Helmsman and Companion Seats with folding footrests • Horn, electric • Life Preservers (6) • Lounge, converts to upper and lower berths • Mast with Anchor Light • Mirror in Lavatory • Mufflers • Navigation Lights, International • Rudder Angle Indicator • Screens • Shipping Cradle • Stern Pole and Flag • Sun Lounge with Cushions, forward deck • Toilet, electric • Trim Control, with indicators • Tubing and Wiring installed for air conditioning • Windshield Wipers (2) • Wiring for VHF FM radio-telephone and auto. pilot.





## 35' COMMANDER SPORTS CRUISER

This fiberglass Sports Cruiser doubles as a sport fisherman and a spacious family cruiser.

Tilt steering is standard on the Command Bridge® to make stand-up maneuvering a joy whether you are fighting a big fish or a big sea.

The deckhouse superstructure and raised deck construction provide space for double staterooms and give this sporty 35-footer room and luxury.

Of course, the Integrated Marine Electronic System and Command Bridge® are standard, and the Command Console contains weather protected instrumentation such as Trim Controls with indicators, a depth sounder, and rudder position indicators.







#### SPECIFICATIONS

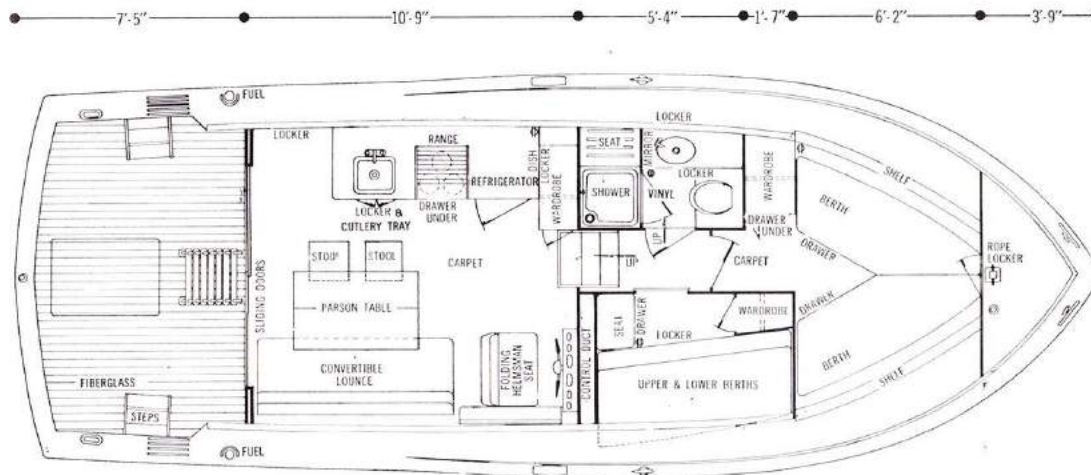
Sleeping Capacity .....	6
Length .....	35'-0"
Beam .....	13'-0"
Draft .....	35½"
Freeboard, forward .....	.67"
Freeboard, aft .....	45½"
Weight (lbs. displacement, est.) .....	17,364
Height from waterline (clearance)	
with mast down .....	12'-2½"
with mast up .....	12'-6"
Fuel Capacity, gallons .....	250
Fresh-Water Capacity, gallons .....	75
Decks and Cockpit Floor .....	Fiberglass

#### STANDARD EQUIPMENT

Anchor, Line, Chocks and Deck Pipe • Battery Disconnect Switches • Battery Paralleling Switch • Bilge Blower • Bilge Pump, automatic • Bow Pole • Bow Rail, extended type • Carpeting • Circuit Breaker Fusing • Command Bridge® with Dual Controls, adjustable Helmsman Seat, Windshield, Weathercloths and Remotes (Speaker & Mike only) for radio-telephone and electronic hailer • Deck Hardware including Mooring Bitts and Cleats • Deck Hatch, forward, with vent • Dock Lines, nylon • Dockside Wiring 115V AC, 30 amp, 3-wire inlet with shore cable, adapter and ample 3-wire cabin outlets • Draperies • Electronics: Installation includes Depth Sounder (lower station), 100-watt AM Radio-Telephone, Electronic Hailer, Antenna, Transducer, Radio Ground, Engine Shielding, Custom Cabling and Back-Lighted Night-Adapted Panels • Fog Bell • Fresh Water Pressure System, Hot and Cold • Fuel Gauge • Galley with Stainless Steel Sink, 6.5 cu. ft. Electric Refrigerator-Freezer and 3-burner Electric Range with oven and Rotisserie • Handrails on Hardtop • Helmsman Seat with Folding Footrest • Horn, electric • Convertible Lounge • Life Preservers (6) • Mirror in Lavatory • Mufflers • Navigation Lights, International • Rudder Angle Indicator • Screens • Shipping Cradle • Shower • Stern Pole and Flag • Table, Parson cocktail-dining • Toilet, electric • Trim Controls with Indicators • Tubing and Wiring Installed for air conditioning • Windshield Wipers (2) • Wiring for VHF FM radio-telephone and auto-pilot.

#### 35' SPORTS CRUISER "SPECIAL"

The Commander "Special" is identical in every respect to the regular Commander except for certain standard equipment. The hull, cabin, engines, fittings, finish and decor are exactly the same in both models. The objective in offering a "Special" boat is to permit an owner to equip his boat with those features which are appropriate to the water and climate of his boating locale. The ultimate benefit to the buyer is that he can enjoy the performance and accommodation advantages of the regular Commander, but only pay for that equipment which will contribute to his personal comfort and convenience.





## 38' COMMANDER

With this fiberglass Commander comes a whole new concept in cruiser design. An exciting superstructure — the cabin sides extend flush to the sheer — adds dozens of cubic feet to cabin interior space which has been engineered for the maximum comfort and use.

The interior becomes one huge family room and converts to twin sleeping rooms at night — the forward sleeping two, the aft converting to four.

For daytime or evening entertaining, the

forward area becomes an over-sized divan. On the port side, there is a complete all-electric galley and a private lavatory.

And, of course, the Chris-Craft Integrated Marine Electronics System is standard.





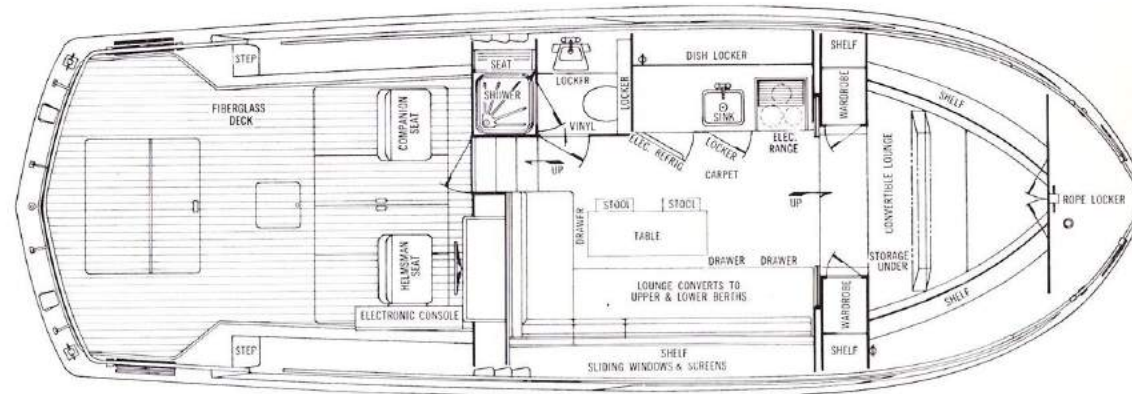
## SPECIFICATIONS

Sleeping Capacity .....	6
Length .....	38'-0"
Beam .....	13'-0"
Draft .....	36"
Freeboard, forward .....	63"
Freeboard, aft .....	44"
Height from waterline (clearance)	
with mast up .....	12'-0"
to top of optional command bridge .....	13'-2½"
Weight (lbs. displacement, est.) .....	16,954
Fuel Capacity, gallons .....	300 gas, 200 diesel
Fresh-Water Capacity, gallons .....	75
Forward, Side and Aft Decks .....	Fiberglass
Cockpit Floor .....	Fiberglass



## STANDARD EQUIPMENT

Anchor, Line, Chocks and Deck Pipe • Battery Disconnect Switches • Battery Paralleling Switch • Bilge Blower • Bilge Pump, automatic • Bow Pole • Carpeting • Circuit Breaker Fusing • Cockpit Rail with Gates • Compass, illuminated, 1" • Deck Hardware including Mooring Bitts and Tow Post • Deck Hatch, forward with vent • Dock Lines, nylon • Dockside Wiring 115V AC, 30 amp., 3-wire inlet with shore cable, adapter and ample 3-wire cabin outlets • Draperies • Electronics: Installation includes Depth sounder, 100-watt AM Radio-Telephone, Electronic Hailer, Engine Shielding, Radio Ground, Antenna, Transducer, Custom Cabling and Backlighted Night-Adapted Panels • Fire Extinguishers (2) • Fog Bell • Fresh Water Pressure System, Hot and Cold • Fuel Filters • Fuel Gauge • Galley with Stainless Steel Sink, 6.5 cu. ft. Electric Refrigerator-Freezer and 3-burner Electric Range with oven, rotisserie and stove cover • Handrails on cabin top, bow and side decks • Hardtop with Ventilating Windshield and Sliding Glass Side Shields • Helmsman and Companion seats with folding footrests • Horn, electric, dual rumpet • Life Preservers (6) • Lounge, converts to upper and lower berths • Mast with Anchor Light • Mirror in Lavatory • Mufflers • Navigation Lights, International • Rudder Angle Indicator • Screens • Shipping Cradle • Shower • Stereo Tape Player • Stern Pole and Flag • Foilet, electric • Trim Controls with Indicators • Tubing and Wiring Installed for air conditioning • Windshield Opener, electric • Windshield Wipers (2) • Wiring for VHF FM radio-telephone and auto. pilot.



## 38' COMMANDER "SPECIAL"

The Commander "Special" is identical in every respect to the regular Commander except for certain standard equipment. The hull, cabin, engines, fittings, finish and decor are exactly the same in both models. The objective in offering a "Special" boat is to permit an owner to equip his boat with those features which are appropriate to the water and climate of his boating locale. The ultimate benefit to the buyer is that he can enjoy the performance and accommodation advantages of the regular Commander, but only pay for that equipment which will contribute to his personal comfort and convenience.





# 38' COMMANDER SEDAN

The years-ahead design of this fiberglass Commander makes it the closest thing under forty feet to a luxury apartment afloat. Its wide-beam superstructure adds space. The sedan layout of the deckhouse adds even more space.

Forward is the master stateroom with two wide berths almost as full at the foot as they are at the head, a huge wardrobe, dresser, laundry locker, and a private door to the head and shower. The dinette amidships converts to a double bed.

The galley is so big it deserves to be called a kitchen, with a 9.0 cubic foot double door refrigerator / freezer / automatic ice cube maker. In the deckhouse, an L-shaped settee not only provides lounge facilities but converts to berths for two.

The wide-beam superstructure is flush to the sheer, creating an unexpected amount of deck space while maintaining sleek, modern lines.

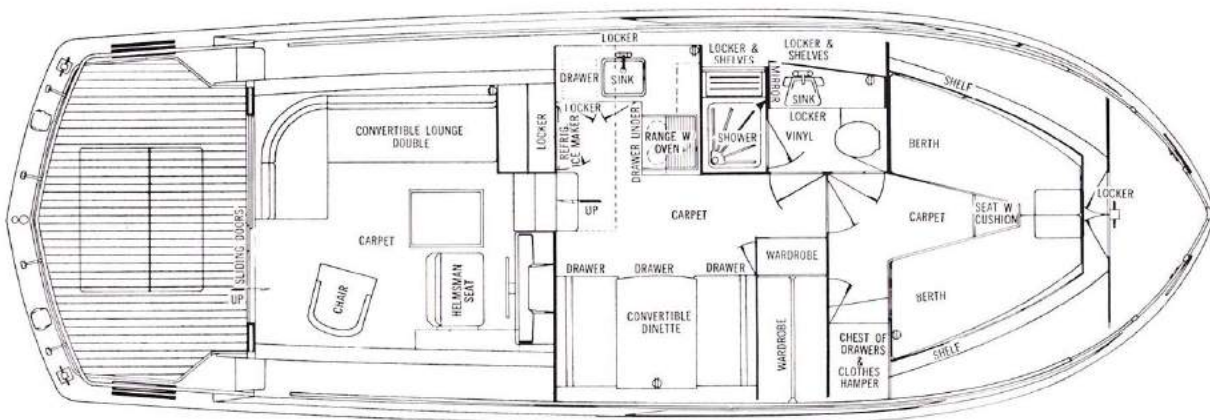
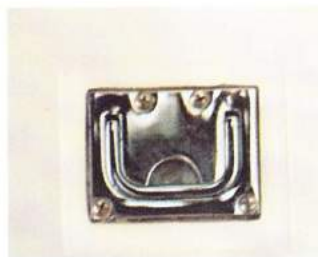
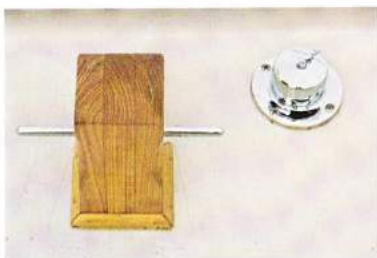
The standard Integrated Marine Electronics System provides a demonstrable plus over competitive offerings.

## 38' COMMANDER SEDAN "SPECIAL"

The Commander "Special" is identical in every respect to the regular Commander except for certain standard equipment. The hull, cabin, engines, fittings, finish and decor are exactly the same in both models. The objective in offering a "Special" boat is to permit an owner to equip his boat with those features which are appropriate to the water and climate of his boating locale. The ultimate benefit to the buyer is that he can enjoy the performance and accommodation advantages of the regular Commander, but only pay for that equipment which will contribute to his personal comfort and convenience.







## SPECIFICATIONS

Sleeping Capacity .....	6
Length .....	38'-0"
Beam .....	13'-0"
Draft .....	36"
Freeboard, forward .....	63"
Freeboard, aft .....	44"
Height from waterline (clearance)	
with mast up .....	12'-0"
to top of optional command bridge .....	13'-2½"
Weight (lbs. displacement, est.) .....	17,736
Fuel Capacity, gallons .....	300 gas, 200 diesel
Fresh-Water Capacity, gallons .....	75
Forward, Side and Aft Decks .....	Fiberglass
Cockpit Floor .....	Fiberglass

## STANDARD EQUIPMENT

Anchor, Line, Chocks • Battery Disconnect Switches • Battery Paralleling Switch • Bilge Blower • Bilge Pump, automatic • Bow Pole • Carpeting • Chair, occasional • Circuit Breaker Fusing • Cockpit Rail with Gates • Compass, illuminated, 5" • Deck Hardware, including Mooring Bitts and Tow Post • Deck Hatch, forward, with vent • Dock Lines, nylon • Dock-side Wiring 115V AC, 30-amp, 3-wire inlet with shore cable, adapter and ample 3-wire cabin outlets • Draperies • Electronics: Installation includes Depth Sounder, 100-watt AM Radio-Telephone, Electronic Hailer, Engine Shielding, Radio Ground, Antenna, Transducer, Custom Cabling and Back-Lighted Night-Adapted Panels • Fire Extinguishers (2) • Fog Bell • Fresh Water Pressure System, Hot and Cold • Fuel Filters • Fuel Gauge • Galley with Stainless Steel Sink, 4.5 cu. ft. Electric Refrigerator, 4.5 cu. ft. Freezer with Automatic Ice Cube Maker and 3-burner Electric Range with oven, rotisserie and stove cover • Handrails on cabin top, hardtop, bow and side decks • Helmsman Seat, adjustable • Horn, electric, dual trumpet • Life Preservers (6) • L-Shaped Convertible Lounge • Mast with Anchor Light • Mirror in lavatory • Mufflers • Navigation Lights, International • Rudder Angle Indicator • Screens • Shipping Cradle • Shower Sliding Door, aft end of deckhouse • Stereo Tape Player • Stern Pole and Flag • Toilet, electric • Trim Controls with Indicators • Tubing and Wiring Installed for air conditioning • Windshield Opener, electric • Windshield Wipers (2) • Wiring for VHF FM radio-telephone and auto pilot.



## 42' COMMANDER

A classic double-cabin, flying bridge cruiser, this fiberglass Commander is a yacht in every sense of the word.

The Command Console is mounted in a unique L-shaped design, with a side cabinet having a protective cover for electronic communications gear.

The sun-deck stern seat which doubles as a big dunnage box is standard, as is the Integrated Marine Electronics System which operates from the helm station.

Luxury comes as standard equipment and includes two electric toilets, a stall shower, carpeting, draperies, screens, bedspreads, a sun lounge with cushions, and Parson's table with matching stools. No 42-footer ever slept six people in such comfort. There is even a 6.5 kw generator for away-from-dock power and fuller usage of the boat's extensive electrical complement, which includes a large double - door freezer-refrigerator with automatic ice cube maker, range, oven, rotisserie, and numerous outlets for TV and other appliances.



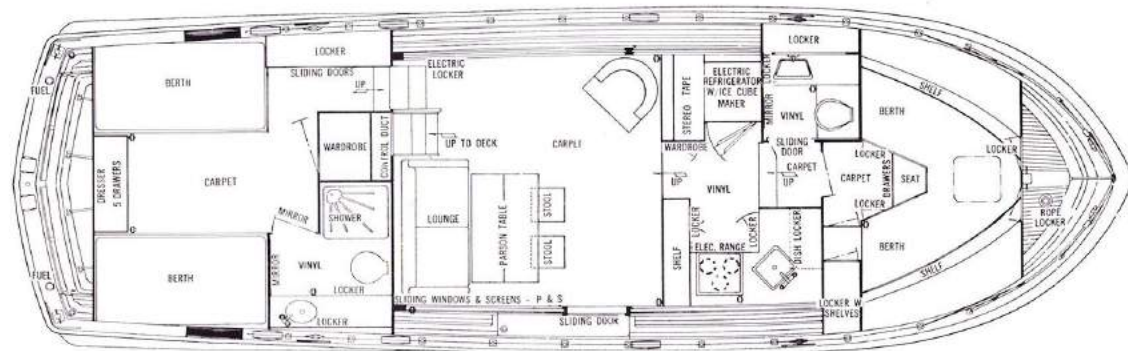
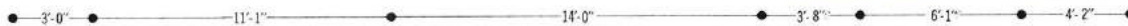


**SPECIFICATIONS**

Sleeping Capacity .....	6
Length .....	42'-0"
Beam .....	13'-0"
Draft .....	37½"
Freeboard, forward .....	76¾"
Freeboard, aft .....	55"
Weight, (lbs. displacement, est.) .....	22,823
Height from waterline (clearance)	
with mast down .....	11'-9½"
with mast up .....	14'-11"
Fuel Capacity, gallons .....	250
Fresh-water Capacity, gallons .....	70
Forward, Side, Sun and Aft Decks .....	Fiberglass

**STANDARD EQUIPMENT**

Alarm System, engine oil and water, audible and visual • Anchor, Line, Chocks and Deck Pipe • Battery Disconnect Switches • Battery Paralleling Switch • Bedsprads (aft stateroom) • Bilge Blower • Bilge Pump, automatic • Bow Pole • Carpeting • Chair, Upholstered Occasional • Circuit Breaker Fusing • Compass, 5" illuminated • Deck Hardware including Mooring Bitts and Tow Post • Deck Hatch, aft • Deck Hatch, fwd., with vent • Dock Lines, nylon • Dockside Wiring, 115V AC, 30 amp., 3-wire inlets, port and starboard with shore cable, adapter and ample 3-wire outlets • Draperies • Electronics: Installation includes Depth Sounder, 100-watt AM Radio-Telephone, Electronic Hailer, Engine Shielding (w/gas engines only), Radio Ground, Antenna, Transducer, Custom Cabling and Back-Lighted Night-Adapted Panels • Fire Extinguishers (3) • Fog Bell • Fresh Water Pressure System, Hot and Cold • Folding Top with Side Curtains • Fuel Filters • Fuel Gauges • Galley with Stainless Steel Sink, 4.5 cu. ft. Electric Refrigerator, 4.5 cu. ft. Freezer with Automatic Ice Cube maker and 3-burner Electric Range with oven, rotisserie and stove cover • Generator, 115V AC 6.5 kw (6 kw if diesel) with Fresh Water Cooling • Handrails on cabin top, bow, side and sun decks complete with Gates • Helmsman Seat, adjustable • Horn, electric, dual trumpet • Life Preservers (6) • Lounge, aft deck • Lounge, converts to double bed • Mast with Anchor Light • Mirrors in lavatories • Mufflers • Navigation Lights, International • Rectifier, 12V 20 amp battery charging, automatic • Rudder Angle Indicator • Screens • Shipping Cradle • Shower • Stern Pole and Flag • Stereo Tape Player • Sun Lounge, with cushions, forward deck • Table, Parsons, with (2) benches • Toilets, electric (2) • Trim Controls with Indicators • Tubing and Wiring installed for air conditioning • Windshield Wipers (3) • Windshield Opener, electric • Wiring for VHF FM radio-telephone and auto pilot.







## 42' COMMANDER SPORTS CRUISER

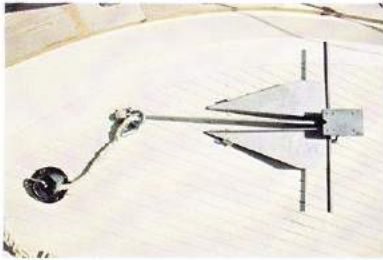
Although high on the luxury scale, the 42' fiberglass Commander Sports Cruiser doubles neatly as a professional sportfisherman. The Command Bridge<sup>®</sup> is standard. The human engineered Command Console, also standard, comes with tilt steering and sliding helmsman seat for easy stand-up maneuvering. With low freeboard aft and its spacious cockpit, this boat is a deep sea fisherman's dream.

On the bridge deck, the Integrated Marine Electronics System is standard.

This Sports Cruiser sleeps six with two private staterooms and has a stall shower in the head.

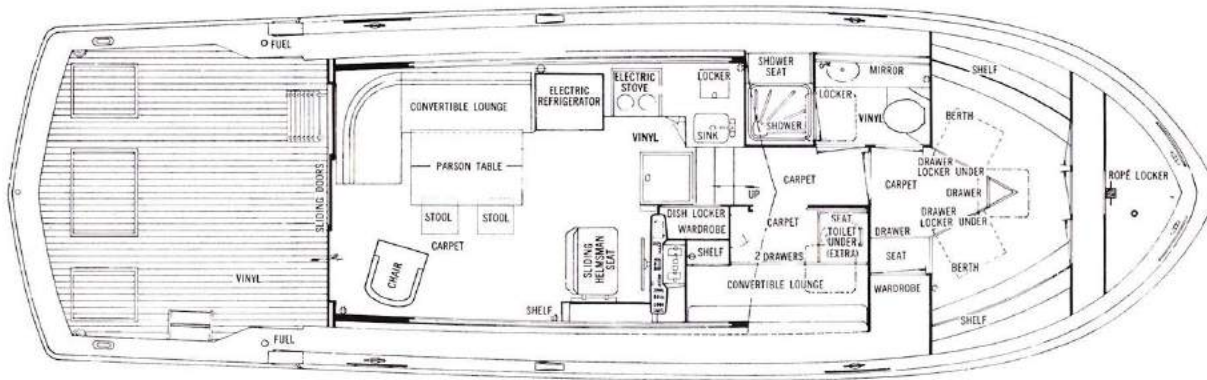
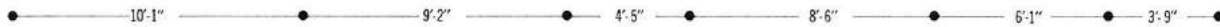
At forty-two feet, there is nothing else in the water for cruising and sportfishing like this double-duty Commander.





## SPECIFICATIONS

Sleeping Capacity .....	6
Length .....	42'-0"
Beam .....	13'-0"
Draft .....	37½"
Freeboard, forward .....	76¾"
Freeboard, aft .....	44"
Height from waterline (clearance)	
with mast down .....	12'-11¾"
with mast up .....	15'-4½"
Weight (lbs. displacement, est.) .....	22,193
Fuel Capacity, gallons .....	300
Fresh-water Capacity, gallons .....	150
Forward and Side Decks .....	Fiberglass
Aft Deck .....	Teak
Cockpit Floor .....	Vinyl-covered



## STANDARD EQUIPMENT

Alarm System, engine oil and water, audible and visual • Anchor, Line, Chocks and Deck Pipe • Battery Disconnect Switches • Battery Paralleling Switch • Bilge Blower • Bilge Pump, automatic • Bow Pole • Carpeting • Circuit Breaker Fusing • Chair, occasional • Cockpit Step • Compass (lower station), 5" illuminated • Cover for windshield, Dacron • Command Bridge® with Dual Controls, Weather Cloths and Speaker and Microphone Remote for radio-telephone and electronic hailer, Compass, illuminated • Helmsman Seat (adjustable) and Windshield • Deck Hardware including Cleats and Tow Post • Deck Hatches, forward with vents (3) • Dock Lines, nylon • Dockside Wiring, 115V AC, 30 amp, 3-wire inlets, port and starboard with shore cable, adapter and ample 3-wire cabin outlets • Draperies • Electronics Installation includes Depth Sounder, 100-watt AM Radio-Telephone, Electronic Hailer, Engine Shielding (gas engines only), Radio Ground, Antenna, Transducer, Custom Cabling and Back-Lighted Night-Adapted Panels • Fog Bell • Fresh Water Pressure System, Hot and Cold • Fuel Filters • Fuel Gauges • Galley with Stainless Steel Sink, 9.5 cu. ft. Electric Refrigerator - Freezer and 3 - burner Electric Range with oven, rotisserie and stove cover • Generator, 115V AC, 6.5 kw (6 kw if diesel) with Automatic and Remote Starting, Fresh Water Cooling • Handrails on hardtop, bow and side decks • Helmsman Seat with Folding Footrest • Horn, electric, dual trumpet • Life Preservers (6) • L-shaped Convertible Lounge, main salon • Lounge converts to upper and lower berths • Mast with Anchor Light • Mirror in lavatory • Mufflers • Navigation Lights, International • Rectifier, 12V 20 amp battery charging, automatic • Rudder Angle Indicator • Screens • Shipping Cradle • Shower • Sliding Door, aft salon • Stern Pole and Flag • Stereo Tape Player • Table, Parson's and benches (2) • Toilet, electric • Trim Controls with Indicators • Tubing and Wiring Installed for air conditioning • Windshield Wipers (2) • Wiring for VHF-FM radio-telephone and auto. pilot.





## INTEGRATED MARINE ELECTRONIC SYSTEM

Years ahead of its time, the Chris-Craft Integrated Marine Electronics System combines essential electronic communication, safety and navigation aids with the boat's operating controls and engine instruments in space-age modular designs. Distinctive and highly functional, these consoles add an ease of operation never before available on boats and eliminate the clutter of miscellaneous electronic gear attached to bulkheads.

Sophisticated, yet easy to operate, the Chris-Craft electronic equipment is specifically designed for marine environments. The basic electronics package combines a powerful AM radio-telephone, two-way loud hailer with sensitive listening and penetrating fog horn, dual range depth sounder and an electronic dimmer control for back-lighting of all control panels.

Human engineered for ease of operation and safety, the communications console is conveniently located by the helm in a locking cabinet. The standard Chris-Craft 100-watt six-channel AM radio-telephone factory installation includes a highly efficient 24-foot antenna and special radio ground molded in the hull. With greater radiated "talk power" and a sensitive receiver, as well as complete engine ignition and alternator noise suppression, long range interference-free communication is ensured.

Also incorporated at the communications station are the loud hailer-listener, fog horn-signaler and microphone selector functions, as well as provision for future installation of a VHF/FM radio-telephone. A single microphone and transfer switch is provided to simplify operation and avoid unnecessary clutter at the helm.



Command Bridge<sup>®</sup> of a 35' Commander Sports Cruiser. The electronic bin, shown in the open position, houses the remote for the standard AM 100-watt radio-telephone and loud hailer, the optional 25-watt VHF/FM radio-telephone (upper right) and the optional depth sounder (lower right). Space is provided in the front of the bin for the microphone and the optional automatic pilot remote control assembly.



Lower helm station on a 35' Commander Sports Cruiser. Left of the wheel is the 60-foot-60-fathom depth sounder. In the locking cabinet outboard of the helmseat are the standard 100-watt AM radio-telephone and the electronic loud hailer plus the optional VHF/FM radio-telephone and automatic pilot.



## COMMAND BRIDGE CONSOLES

Commanders with Command Bridges® may also be equipped with a console incorporating the essential functions of the Integrated Electronics System in a separate installation. On the 35' and 42' Commander Sports Cruisers, a simple remote control is at the Command Bridge® station and consists of an independent speaker, loudness control and microphone for operation of the AM radio-telephone or two-way hailer-horn system. Other Command Bridge® electronic options include an independently operating 60-foot-60-fathom depth sounder, VHF/FM radio-telephone remote control module and/or automatic pilot control station all housed in a weather-protected folding bin. Again, electronic control panels and engine instrument lighting is regulated by electronic dimmers for night operation.

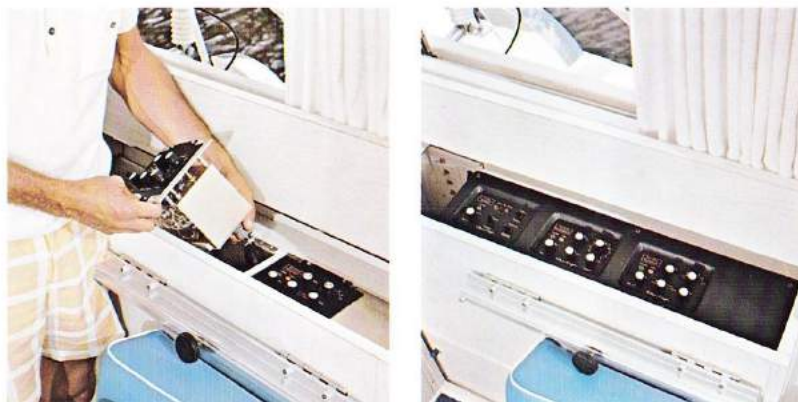


Control panels of all electronic components feature adjustable intensity back-lighting. This photograph shows the VHF/FM radio-telephone remote control panel illuminated at night.

## OPTIONAL EQUIPMENT

Completely pre-wired with cable assemblies and mating connectors at planned locations, the Integrated Electronics System can be readily expanded at the factory or by Chris-Craft dealers. Options include installation of a Chris-Craft automatic pilot and/or a 25-watt 10-channel VHF/FM radio-telephone with weather and dual channel monitors.

Sleeve or drawer-type housing of electronic components facilitate their easy removal for inspection, service or storage. Rapid electrical disconnect is provided by the easily removed military-type connector as shown in owner's left hand.



## LIGHTING

Control panels and engine instruments in Chris-Craft consoles are back or edge-lighted with adjustable intensity for optimum visibility under varying light conditions. Solid state dimmers are provided with two independent full-range controllers at the helm position for varying the brightness levels of the electronic controls and the boat's engine instruments separately.



A complete and detailed owner's manual for the Integrated Marine Electronics System is provided with each boat.

## FITTINGS AND SERVICE

Advanced electronic design and manufacturing techniques characterize the Chris-Craft Marine Electronics System. Environment resistant military-type electrical connectors with gold-plated contacts and shielded cable assemblies are used throughout the system to ensure reliable interference-free operation. Sleeve or drawer type enclosures facilitate individual and rapid removal of electronic modules and control units from the front of the instrument panel for periodic inspection or fast service.

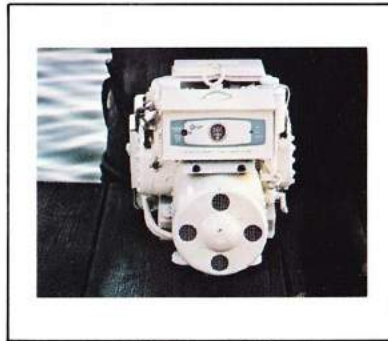


# Accessories

See optional equipment catalog



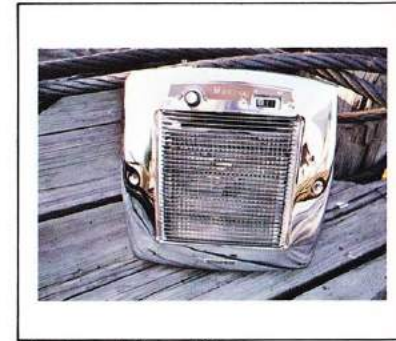
Canvas options



Generators, 115V AC and 230V AC



Bilge pumps



Heating and air conditioning



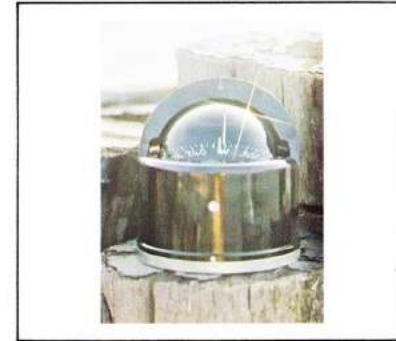
Water pressure systems



Toilet options



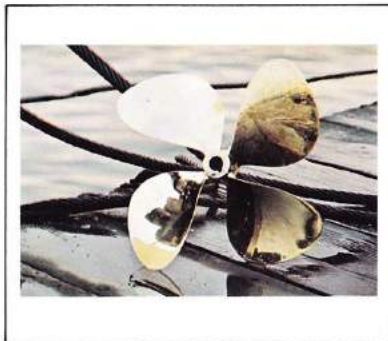
Electronic accessories



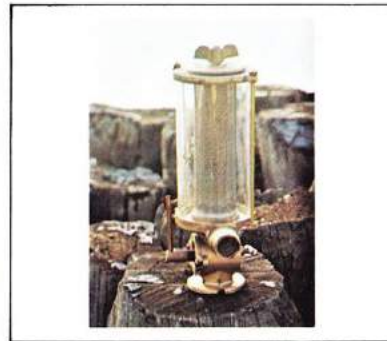
Compasses



Search lights



Spare propellers



Raw water intake strainers



Command Bridges®



# Warranty

## 1. Chris-Craft Corporation (Company):

(a) For a period of twenty-four (24) months or four hundred (400) hours operation, whichever occurs first, from the date of sale to the first use purchaser, will through its selling dealer repair or replace any part manufactured by it (except as hereinafter provided) which is proven to the Company's satisfaction to be defective by reason of faulty workmanship or material, if such part is promptly returned to the selling dealer with a sum sufficient to pay transportation charges to such point of manufacture as the Company may designate.

(b) For the first twelve (12) months or two hundred (200) hours of operation, whichever occurs first, from the date of sale to the first use purchaser, will through its selling dealer reimburse the purchaser for the labor costs involved in the removal of the defective parts and the reinstallation of repaired or replaced parts, provided that the labor cost reimbursement will be based on a Flat Rate Schedule established by the Company and where not applicable on a reasonable number of hours as determined by the Company. In either instance labor will be paid at the regional labor rate.

## 2. This warranty shall not apply to:

(a) Items determined by the Company to be the responsibility of the selling dealer in launching a new boat.

(b) Any failure resulting from lack of maintenance, normal wear and tear or climatic conditions.

(c) Engines, engine parts and boat equipment and accessories not manufactured by Chris-Craft. Any warranty furnished by the manufacturer, if possible, will be passed on to the owner.

(d) Deterioration of coatings, platings, furnishings, or metals because they are affected by climatic and use conditions beyond the control of the manufacturer.

(e) Others than the first use purchaser.

(f) Racing boats or engines.

(g) Speeds because they are estimated and not guaranteed.

(h) Any boat or part manufactured by the Company, which shall have been altered so as to impair the original characteristics.

3. (a) There are no warranties express or implied, made by the Company or the dealer except the Company's foregoing express written warranty, which is made in lieu of all other warranties, guaranties, representations, conditions, obligations or liabilities, including, but not limited to, any and all implied warranties of merchantability of fitness, and the purchaser waives and relinquishes any and all other war-

ranties, guaranties, representations, conditions, obligations, or liabilities, express or implied, arising by law or otherwise.

(b) Purchaser agrees that his exclusive remedy against the Company for misrepresentations or breach of contract or warranty shall be and is limited to the right to repair or replacement of parts and reimbursement for labor costs, as defined and limited in paragraphs numbered 1 and 2 above, and purchaser expressly waives all other remedies of whatever kind or nature, including, but not limited to the remedies of rescission, rejection of nonconforming goods, any claim asserting total or partial breach of contract of sale and any claim for consequential damages.

4. The selling dealer is not an agent for the Company except for the purpose of administering the above warranty to the extent herein provided and the Company does not authorize the selling dealer or any other person to assume for the Company any liability in connection with such warranty or any liability or expense incurred in the replacement or repair of its products other than those expressly authorized herein.

5. The Company reserves the right to improve its products through changes in design or material without being obligated to incorporate such changes in products of prior manufacture and to make changes at any time in design, materials or parts of boats of any one year's model without obligation or liability to owners of boats of the same year's model of prior manufacture.

*Notes pertaining to all models:* Specifications contained in this literature are based on the latest product information available at the time of publication approval. The right is reserved to make changes at any time without notice in prices, colors, materials, equipment, specifications, and models and also to discontinue models. Equipment and accessories pictured but not included in the list of standard equipment will be furnished at extra cost if available. Approved accessories for factory installation are available; for details see Optional Equipment Price List. All orders accepted subject to prices prevailing at time of shipment. The right is reserved to ship from any Chris-Craft factory and orders are subject to acceptance only at Chris-Craft Corp., Pompano Beach, Fla. 33061.





CHRIS-CRAFT CORPORATION, POMPANO BEACH, FLORIDA 33061

Printed in U.S.A.