



THE MOST RESPECTED
FIBERGLASS FLEET
IN THE ENTIRE WORLD OF BOATING

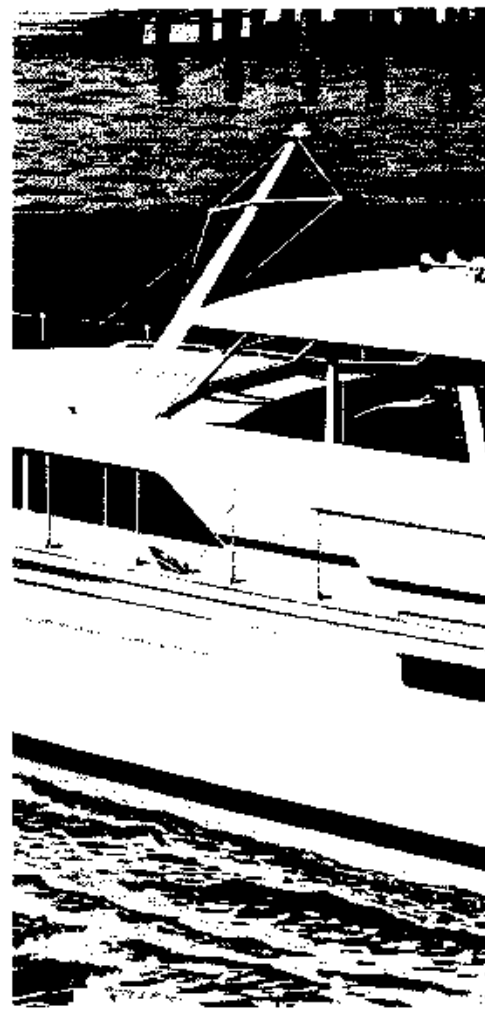
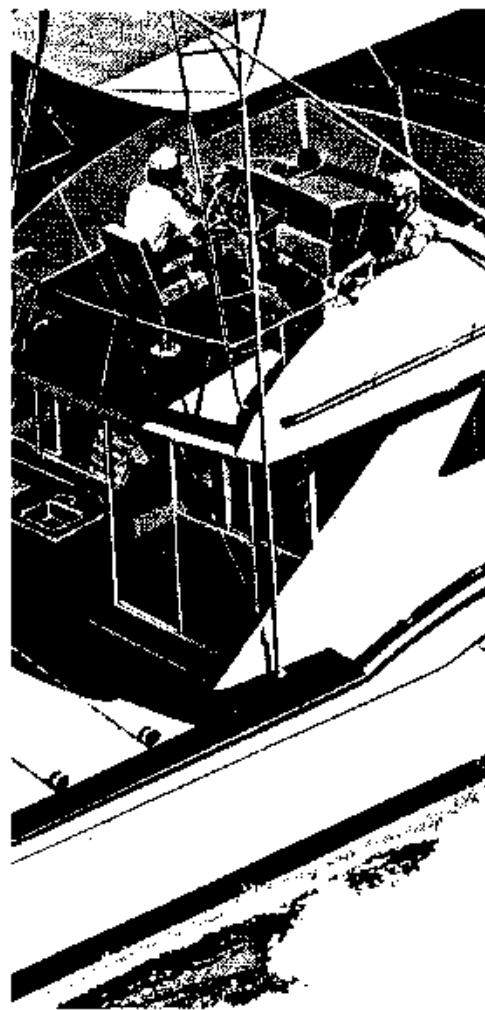
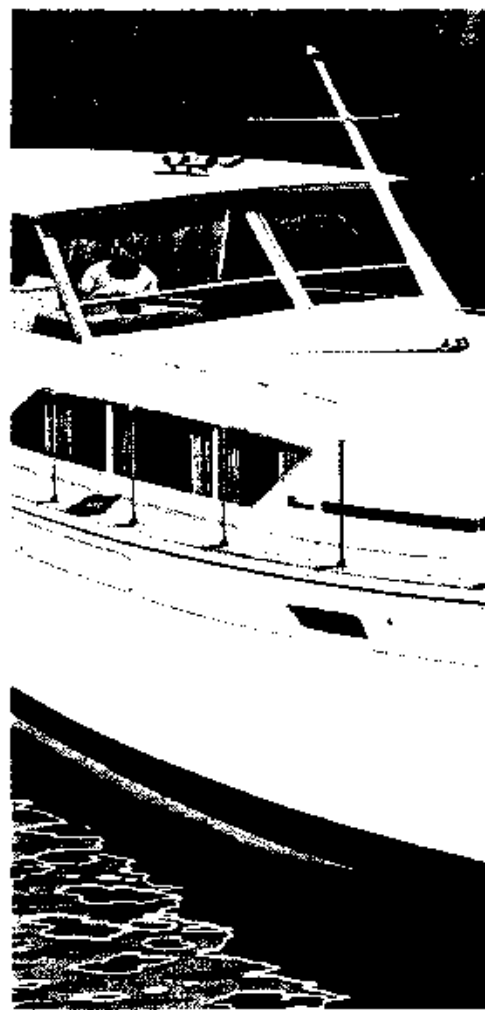
THE GALLANT NEW COMMANDERS

Presenting the most respected fiberglass fleet in the entire world of boating . . . the Chris-Craft Commanders.

Every new Commander stands as enduring proof that all fiberglass boats are **not** created equal. There is a great difference in quality between the boats produced by different boatbuilders. Indeed, the superiority of Chris-Craft in its fiberglass technology, sleek styling and superb craftsmanship is dramatically evident in all of these handsome new models . . . from keel to Command Bridge, from transom to bow.

There are thirteen models in the new Commander fleet, and each is a showcase of Chris-Craft boatbuilding skill. The models range in size from twenty-eight to forty-five feet, and they range in purpose from basic utility to family cruising, to long-range luxury cruising, and to sportfishing in its ultimate form: a design for tournament competition.

The styling is exciting. The interiors are bright, traditional and tastful. The models are packed with fresh engineering advances, the finest Chris-Craft Commander fleet in history.



Exclusive advantages of Chris-Craft Commander fiberglass construction

1) All Commander hulls are of homogenous construction, i.e., hull shell, longitudinal and transverse frames are all fiberglass. There are no wood structural members. Transverse frames are molded in, unlike other builders who depend on bulkheads for transverse structural integrity.

2) Chris-Craft doesn't "buy" materials per se, but rather, develops them in conjunction with their manufacturers. Exhausting testing takes place in Chris-Craft's Research and Development Division, and many experiments are conducted before acceptable materials are developed. Then materials such as gel coats, resin and fiberglass are produced to Chris-Craft's own specifications.

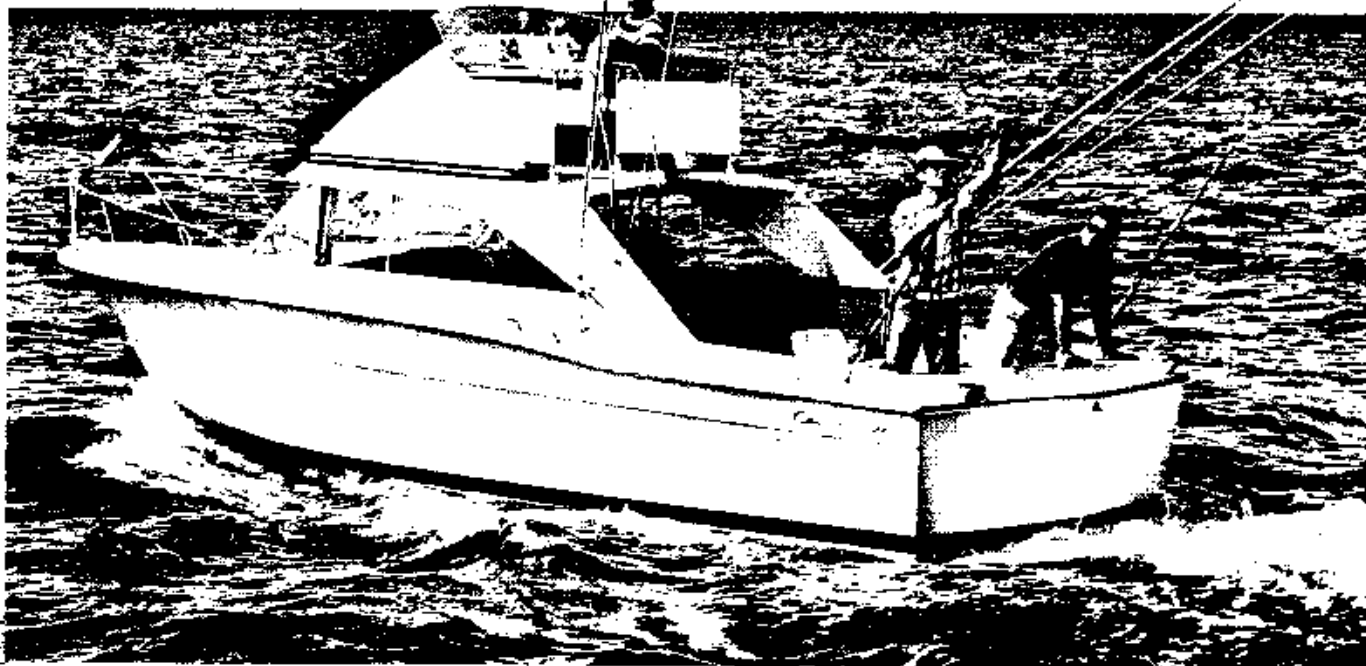
3) Chris-Craft gel coats have high gloss and high resistance to crazing. They are similar in hardness to the finishes on sinks, bathtubs, etc. where gel coat is used in lieu of porcelain.

4) DuoGlas, Chris-Craft's exclusive structural fiberglass reinforcing material, allows close control over each section's resin-to-fiberglass ratio and complete saturation of the fiberglass, thus assuring maximum strength and minimum weight.

5) Chris-Craft hull structures are stronger, per pound weight, than the hull structures of other builders.

6) Chris-Craft resins are especially formulated to resist inter-layer delamination. This also helps insure the return of structural integrity in an area repaired after damage.

7) Chris-Craft uses non porous gel coats and the laminate compositions insure minimum water absorption — in fact less than one-tenth of one percent of a laminates weight. (Inferior fiberglass laminates may absorb as much as 10% of their weight in water, which can cause as much as 50% loss of strength.)



28' COMMANDER[®] SPORTS EXPRESS

Take a fast, soft-riding, all-fiberglass deep-V hull, protected by a sturdy hardtop, and powered by a pair of Chris-Craft engines. Then . . . equip it the way you want it!

Want to go fishing? Order her with the optional Command Bridge and a flush fish box that mounts in the aft lazarette locker.

Want to cruise? Add foam mattresses to the forward V-berths, plus dinette and galley, and you have a comfortable four-sleeper.

For more weather protection, an aft bulkhead is available — which, of course, gives you an enclosed cabin cruiser.

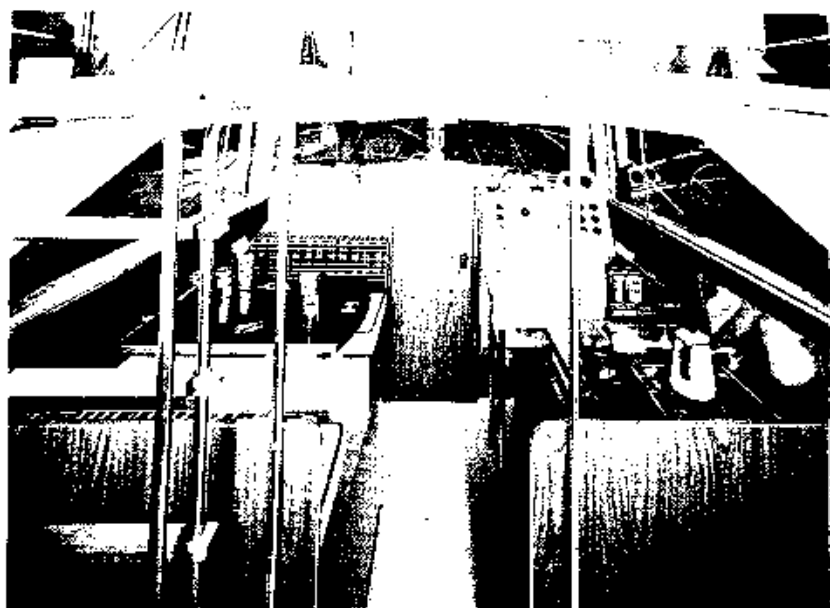
Flexibility is the key.

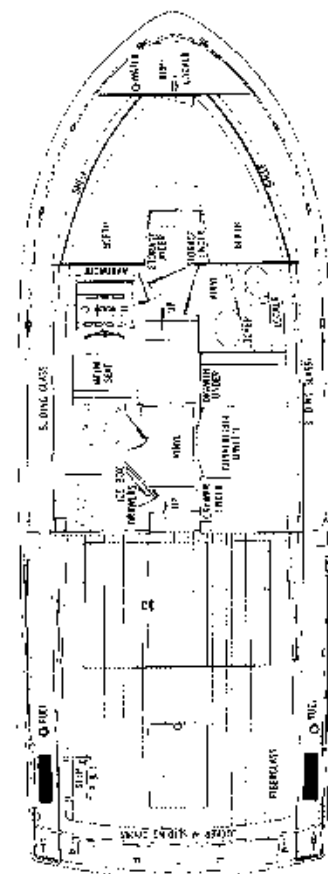
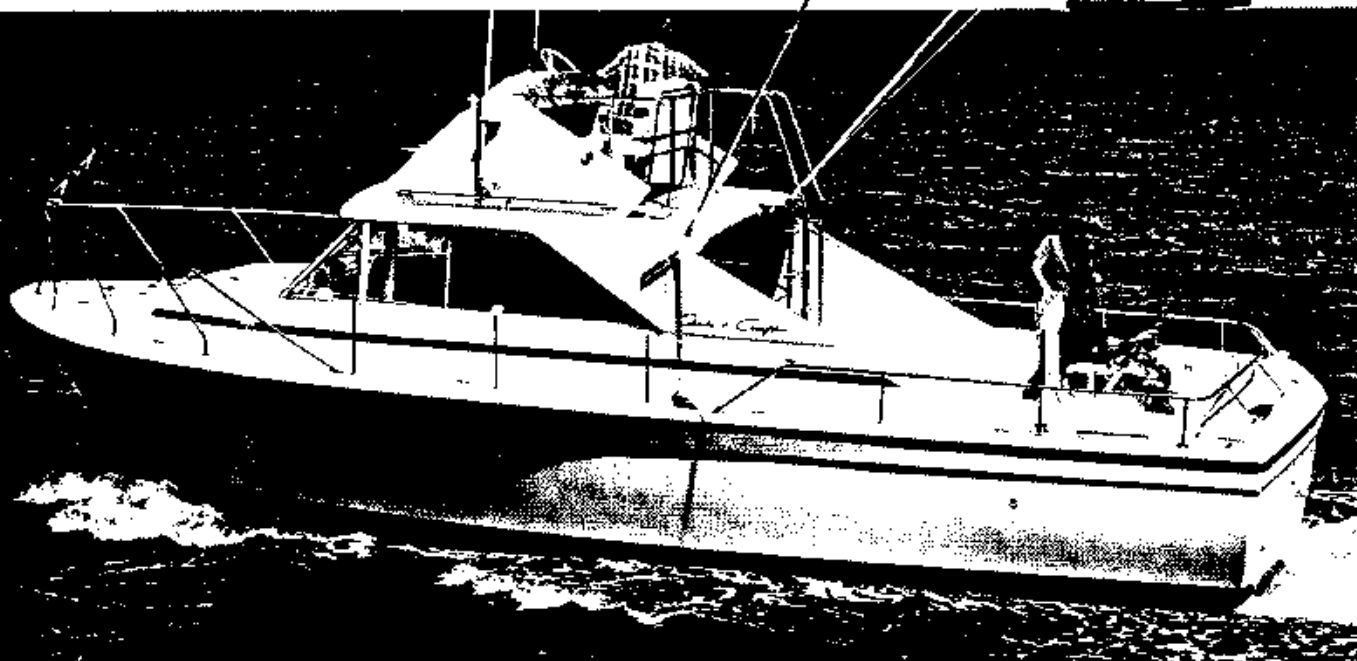
By selecting only the optional extras you want, satisfaction is guaranteed. The list of options is long . . . and it includes everything from an electric refrigerator-freezer to a stereo tape player. And it helps make your boating enjoyment entirely up to you!

Power choices: twin 200 or 235-hp Chris-Craft engines.

Length
Beam
Draft

28'1"
11'1"
30 1/2"





31' COMMANDER SPORTS CRUISER

You're a true fishing enthusiast? Chris-Craft hasn't forgotten you. Here's a sporty version of the 31-foot Commander designed especially for you.

Its basic form, provides for a semi-enclosed four-sleeper with private forward stateroom, enclosed lavatory, convertible dinette, galley, and control station with helm seat standard. For more cruising comfort, you can add an optional drop curtain — or even order a complete bulkhead with door to make this model into an enclosed sedan cruiser. A comfortable Command Bridge is optional for the hardtop.

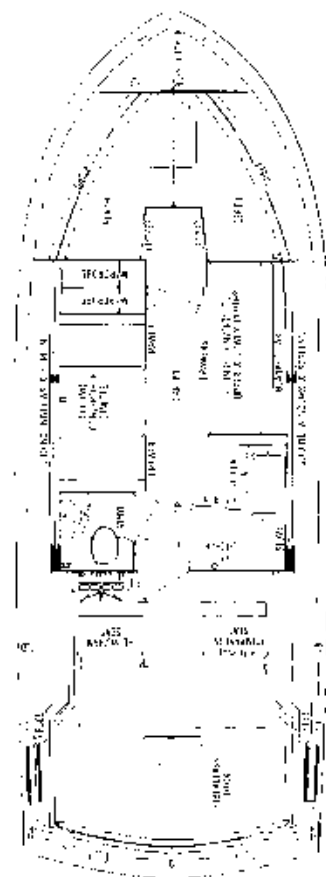
Durable, easy-to-maintain materials have been

used throughout the interior. Cabin floors are covered in a white planked vinyl.

Twin-screw options include 235 and 300-hp Chris-Craft engines and 145-hp diesels.

This is truly a versatile Commander, and one that offers superior construction and performance at an attractive price.

Length	31'0"
Beam	11'3 1/4"
Draft	31 1/4"



31' COMMANDER

A combination of fine elements make this Commander truly appealing to the cruising family.

A fast and able fiberglass Commander hull, powered by a choice of twin Chris-Craft engines or diesel power.

A comfortable and practical cabin layout featuring a private forward stateroom, convertible lounge and dinette which face each other in mid-cabin, a very "workable" L-shaped galley, and generous amounts of storage space.

Warm, natural wood tones are used throughout, and tweedy materials in beige-plaids are Scotchgarded. The carpeting is dark brown

shag. Complementary draperies are standard.

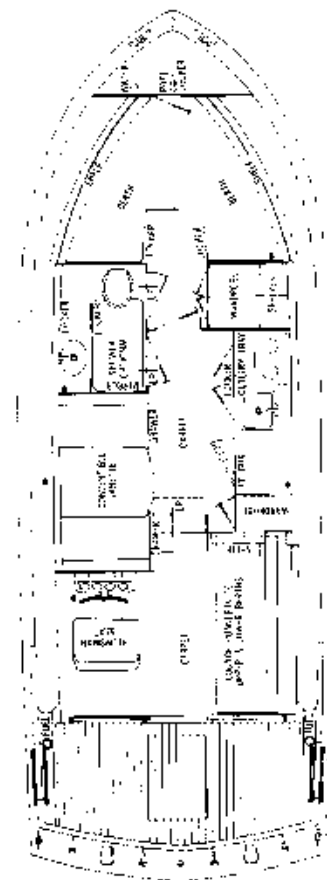
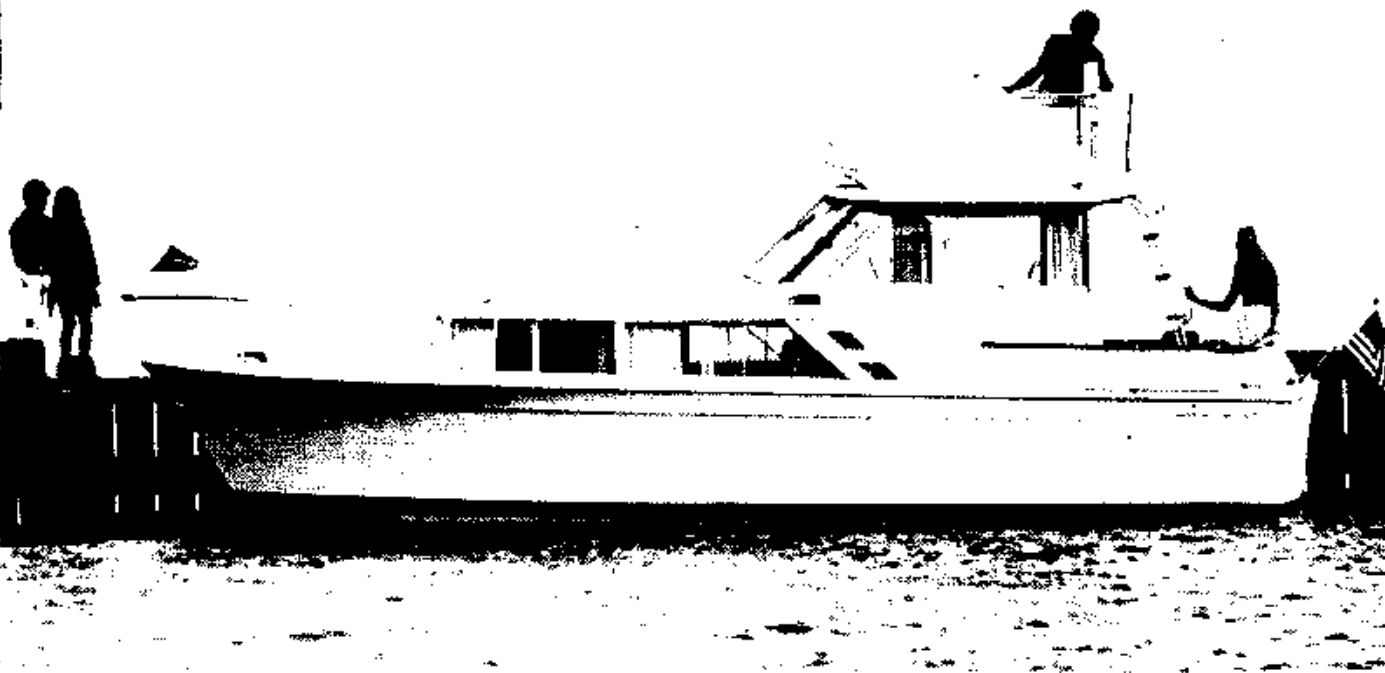
The cockpit has a non-skid fiberglass deck. The control station is portside, with full instrumentation, including hand side-by-side throttle controls. A helmsman seat is standard and a matching companion seat is optional.

A comfortable attractive craft that families will find it's great living aboard and be proud to own.

Length
Beam
Draft

31'0"
11'3 1/4"
27 1/4"





31' COMMANDER SEDAN

This is a particular triumph in design. Chris-Craft has succeeded in putting a full-fledged sedan into the lively 31' Commander hull.

Three separate sleeping areas assure privacy and make cruising comfortable for six. A large forward stateroom features a huge wardrobe and private entrance to the lavatory. Shower is optional.

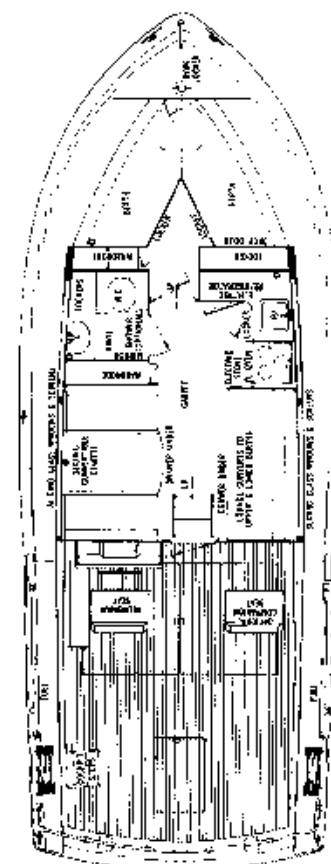
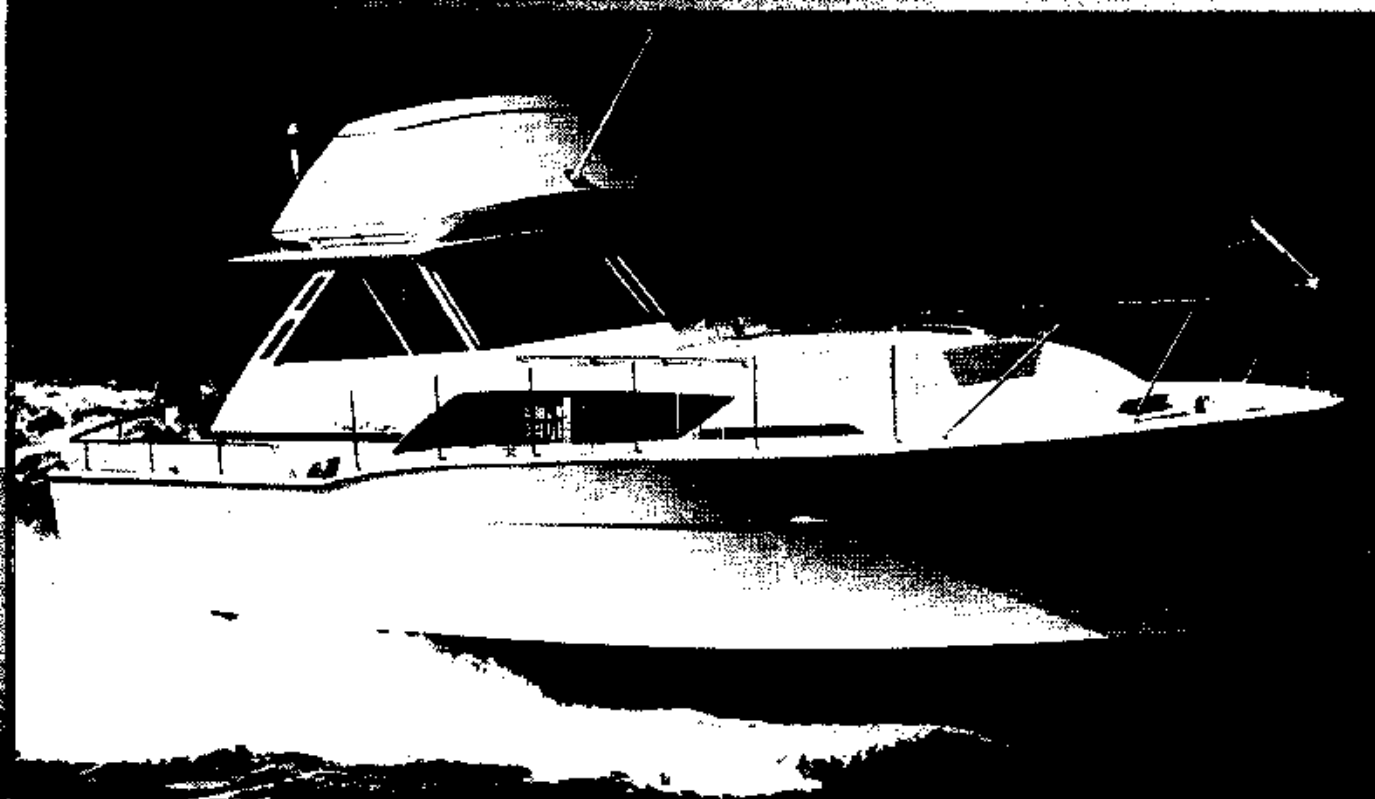
In the main cabin, the galley has an abundance of storage and counter space, and there's provision for an optional under-counter refrigerator-freezer. A convertible dinette is opposite the galley.

The bright, cheerful deckhouse has a standard

helm'sman seat and a lounge that converts to upper and lower berths. Using beiges and browns primarily, the interior areas are warmly decorated in blends of wood tones, plaids, and matching solid colors. Draperies and shag carpeting are standard.

A Command Bridge with full accessories is optional. Power may be either Chris-Craft engines or diesels.

Length	31'0"
Beam	11'3 $\frac{3}{8}$ "
Draft	27 $\frac{3}{4}$ "



35' COMMANDER

When you see the combination of outstanding performance and luxury cruising facilities for six that this model offers, you can understand why it's so popular.

The wide cockpit is protected from the weather by a standard hardtop with sliding side shields. The foredeck has a sun lounge, a popular feature of larger Chris-Craft yachts.

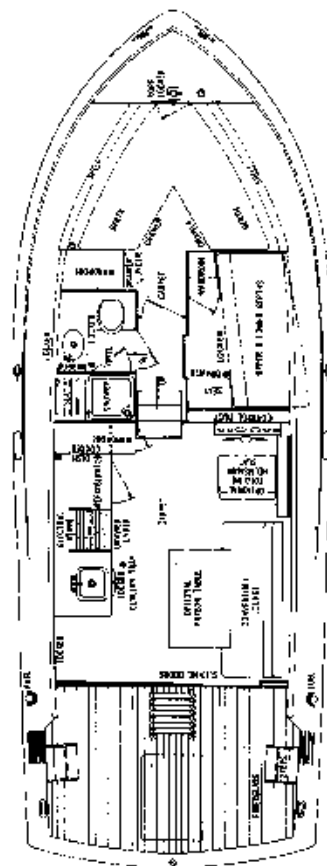
In the main cabin, a roomy dinette is opposite a long lounge, making a fine midship entertainment area. The lounge becomes upper and lower berths and the dinette converts to a double berth.

Just forward is an L-shaped galley with an

under-counter refrigerator-freezer and an electric range with oven and rotisserie. A shower is optional for the lavatory. V-berths and a wardrobe are in the private forward stateroom.

Twin-screw power choices are the same as other 35-ft. models.

Length	35'0"
Beam	13'0"
Draft	35 1/2"



35' COMMANDER SPORTS CRUISER

When you have all the advantages of a luxury sedan and you add those of a sporty fishing model — you've really got something.

You've got a 35' Commander Sports Cruiser. And nothing could be more ideal for a sports-minded family of six.

The skipper and his wife will welcome the room and privacy in the forward stateroom, as well as the generous amount of storage space. Another private stateroom with upper and lower berths is on the starboard side. Opposite is a large and elegantly appointed lavatory with enclosed stall shower.

The galley is in the big deckhouse, aft and on

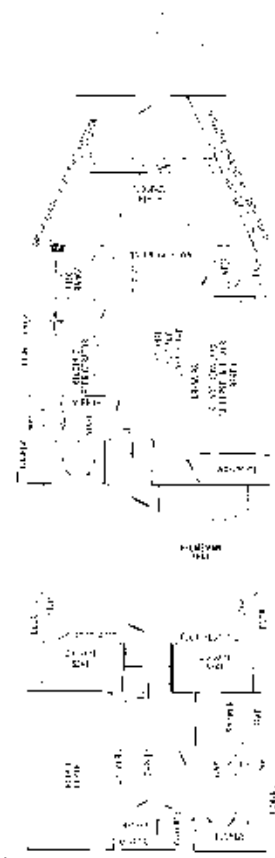
a higher level. It's fully equipped with refrigerator, range and oven. On the other side of the fully carpeted deckhouse is a long lounge which converts to a double berth. An optional parson table may be set before it for meals.

A Command Bridge with dual controls is optional for the broad cabin top. Tilt steering wheel is available which allows the pilot to steer either seated or standing up — while docking or maneuvering for a gamefish.

The warm blending of natural wood tones, black countertops and attractively colored vinyls and fabrics are sure to please any skipper's mate.

Twin 235 or 300-hp Chris-Craft engines, or 189-hp diesels are the power choices.

Length	35'0"
Beam	13'0"
Draft	35½"



35' COMMANDER SALON

Here's a brand-new design that puts you right in the center of things! The cockpit area not only has twin seats just aft of the pilot station, but the aft cabintop can be cushioned with an optional "sun pad" for more seating and lounging space.

Another happy feature: separated living quarters. There's a private aft cabin with double berth, dresser and mirror, that's reached without passing through anyone else's quarters. Included is a large private bath with stall shower.

Forward of the bridge is the main salon, uniquely designed with plenty of space and all of the facilities necessary for entertaining. A long lounge converts to upper and lower berths.

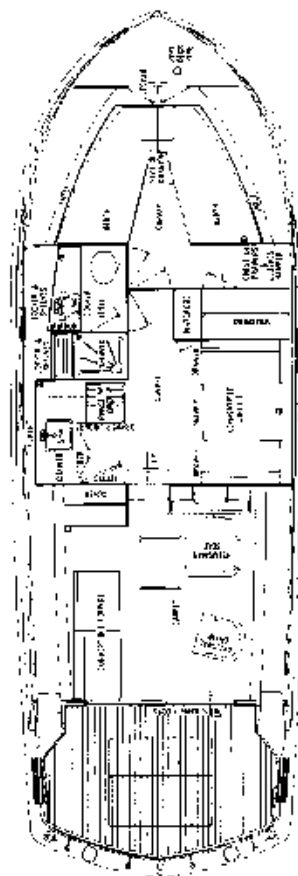
An optional flip-top dinette table stands before it. Just aft of the galley is a large enclosed lavatory with an optional shower.

In the forward area, an upper berth drops down over an athwartships lounge. A second upper berth is optional. A folding privacy curtain closes off the forward sleeping area at bedtime which by day is an integral part of the main salon — creating a large family room.

Twin 235-hp or 300-hp Chris-Craft engines, or 189-hp diesels are available.

Length	35'0"
Beam	13'0"
Draft	35½"





38' COMMANDER SEDAN

Having many of the advantages of a sport-fisherman model — plus those of a luxurious sedan — put together in one sleek and beautiful Commander. The unique sweep of the superstructure, which blends into the sheer at the foredeck, creates plenty of walk-around area topside and lots of light, headroom and space belowdecks.

Gracing the new interior decor are the warmth and elegance of natural wood finishes, plus warm shades of tans, reds and beiges. Covering fabrics have tweedy textures, and the deep-pile carpeting is a rich brown.

In the forward stateroom are a huge hanging wardrobe, chest of drawers, clothes hamper,

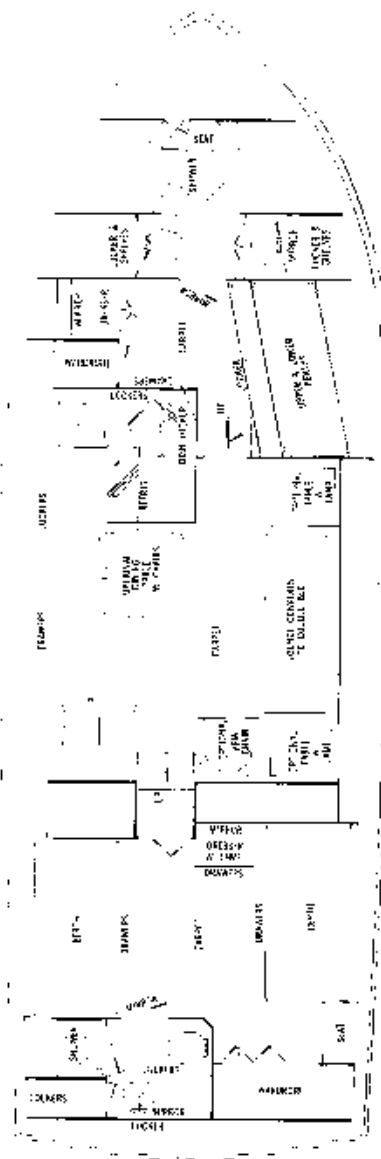
and extra-wide twin berths separated by a cushioned seat. The lavatory has an enclosed shower with entrances to both the main cabin and forward stateroom.

The main cabin features a convertible dinette opposite an all-electric galley with refrigerator-freezer and range with oven and rotisserie.

An apartment-size deckhouse has a comfortable convertible lounge, and an occasional chair is optional for behind the helmsman seat.

Chris-Craft engine power of twin 300 hp. or 258 hp diesels may be ordered.

Length	38'0"
Beam	13'0"
Draft	3'6"





Main Salon looking Forward



Owner's Stateroom

41' COMMANDER

Yacht owners who enjoy extended cruising will appreciate the comfort and convenience features aboard this new Commander: Well-protected walkaround decks, all on one level. A sturdy extended hardtop to protect the aft deck. A salon amidships with plenty of room for entertaining (beam is 14 feet). And staterooms fore and aft with assured privacy. All this plus speed and performance seldom seen in 41 feet.

The master stateroom, aft, is designed to make sure that neither the owner nor his wife ever get homesick for land. There are wide twin beds port and starboard, separated by an expanse of rich carpeting. A custom-designed

dresser with lamp is standard. For hanging dresses and suits, there's a long full-length wardrobe. A mirrored door opens into the master bathroom which has a sink-and-vanity combination, plenty of storage, and an enclosed stall shower.

In the forward section is the large guest stateroom with an upper-lower berth arrangement, complete bath with stall shower, built-in dresser with mirror, and storage space in lockers, shelves, drawers and a full hanging wardrobe.

The main salon's layout seems to be saying, "let's entertain!" Dimensions are 10 by 14 feet, and the all-electric galley is on the same

level, in perfect position for serving diners, who sit at an optional four-place dining table. On the starboard side is a lounge that converts to a double bed, flanked by optional end tables and lamps. An armchair which matches the orange and beige tweed of the lounge is optional.

Many optional extras such as Command Bridge, reverse cycle air conditioning, and stereo tape player, are available. Twin engine options, including diesels, to 300 hp; Chris-Craft Trim Control is standard.

Length	41'0"
Beam	14'0"
Draft	39½"



42' COMMANDER

Chris-Craft engineers and stylists have brought this double cabin flybridge classic design to a new point of perfection.

The skillful use of space above and below-decks has bestowed that much-valued quality of roominess throughout. The main salon and aft deck are both perfect for entertaining . . . and they conveniently adjoin each other. And the salon has almost as much brightness and airiness to offer as the deck area. The decor blends woodgrains, with black and white checks and patterns.

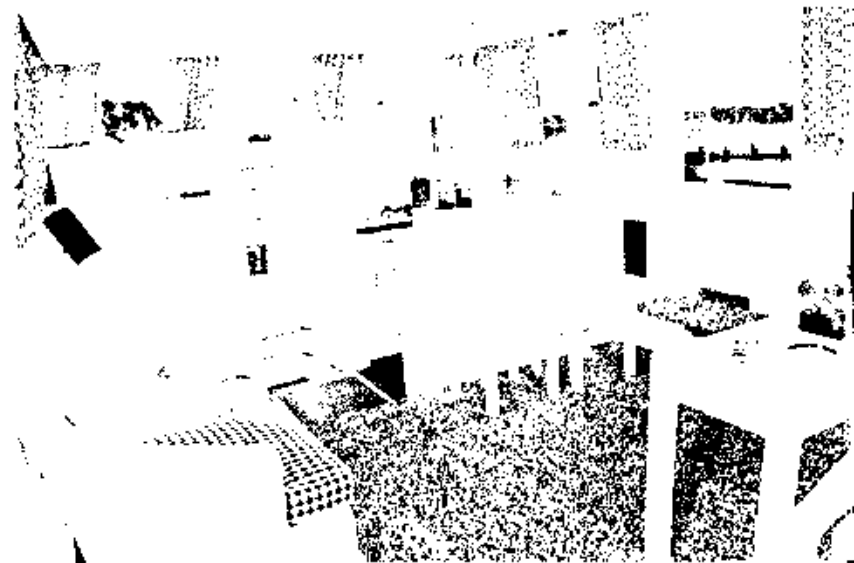
The owner's stateroom aft has wide twin beds, complete furnishings for living aboard, and an adjoining lavatory with mirrored door, stall

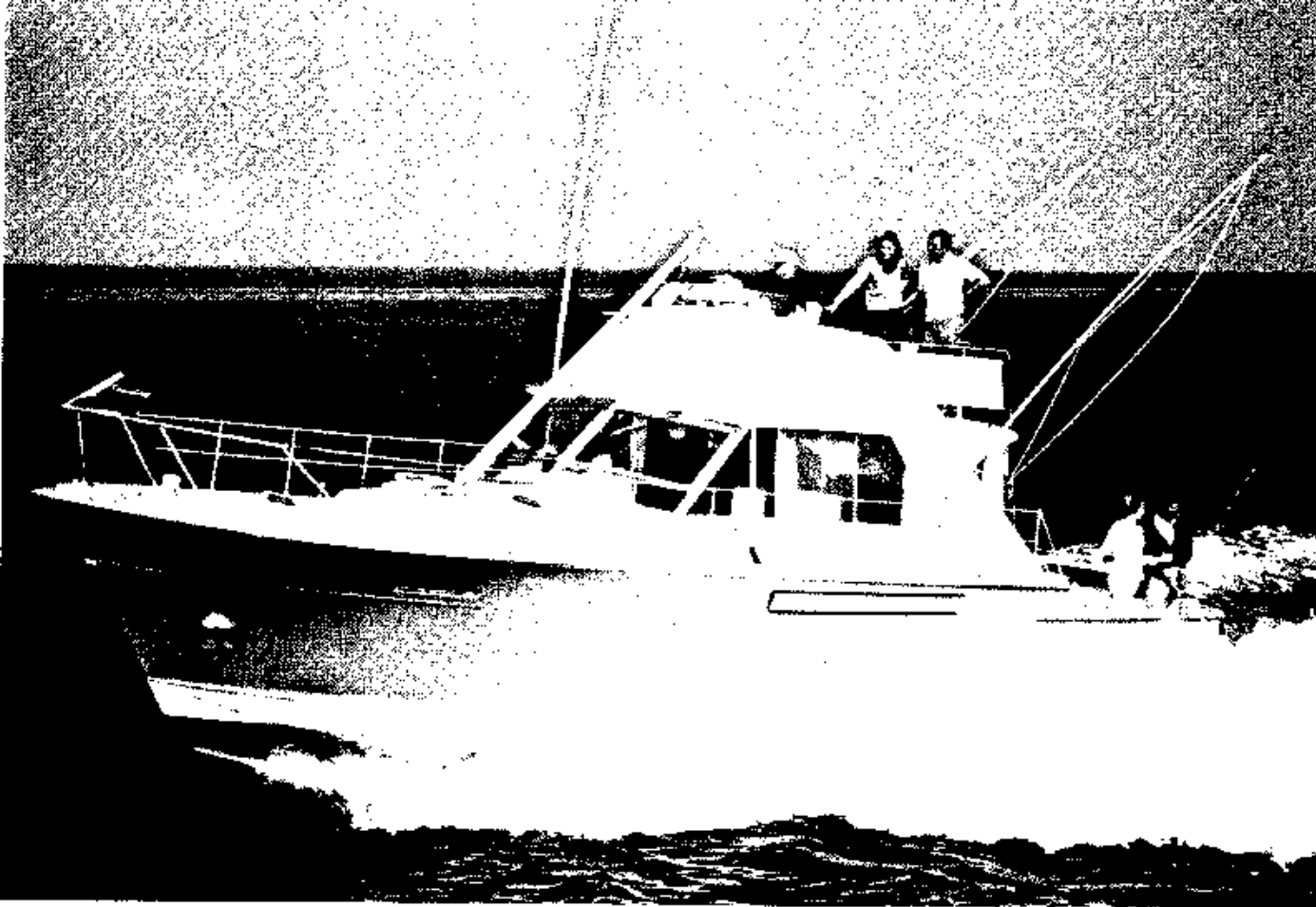
shower and electric toilet. In the forward area is a cheerful guest stateroom and an adjoining lavatory with electric toilet. The galley, larger than many found ashore, has electric refrigerator, range and oven.

Twin 300-hp Chris-Craft engines or twin 258-hp diesels are available for power. Electro-mechanical Trim Control is standard equipment.

Length
Beam
Draft

42'0"
13'0"
37 1/2"





42' COMMANDER SPORTS CRUISER

She looks like a no nonsense sportfisherman on the outside. And she is.

She looks like a luxury yacht, suitable for comfortable extended cruising inside. And she is.

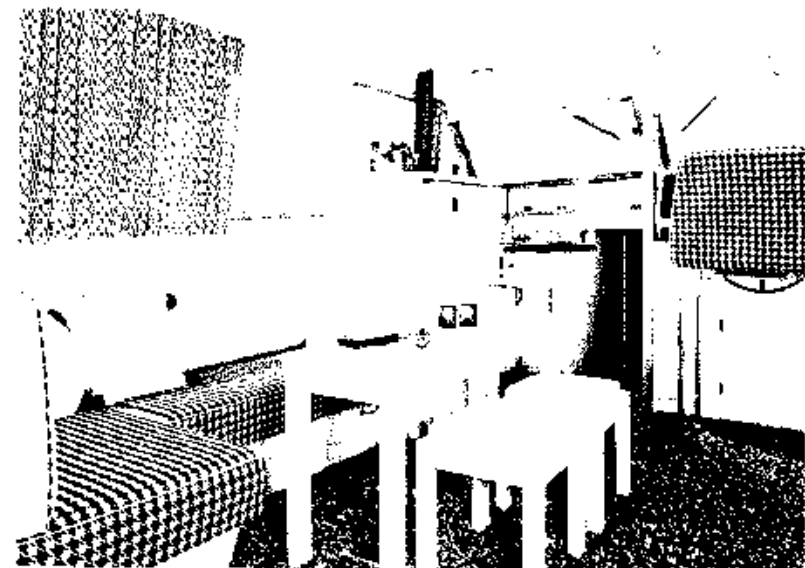
When a family has a difficult time choosing the kind of boat they want, the 42' Commander Sport Cruiser's versatility quickly solves the problem.

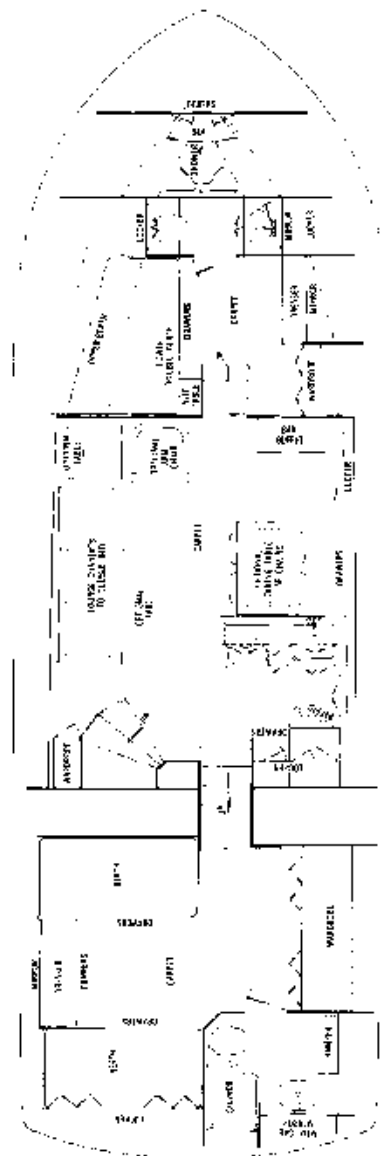
Her cabin layout is unusual. It offers two private staterooms and a large lavatory with enclosed shower . . . all on a lower forward level. Above is the roomy deckhouse-galley, with a big 9.5 cubic foot refrigerator-freezer

and range, oven and rotisserie, and a curved convertible lounge. Parson table, stools, and an occasional chair are optional extras. Salt and pepper shag carpeting is used throughout the interior, and it blends well with the black and white checks and patterns in fabrics and draperies.

Command Bridge package with dual controls, electric tachometers, illuminated compass, helm seat, ladder and windshield may be ordered as an optional extra. Chris-Craft or diesel twin-screw power.

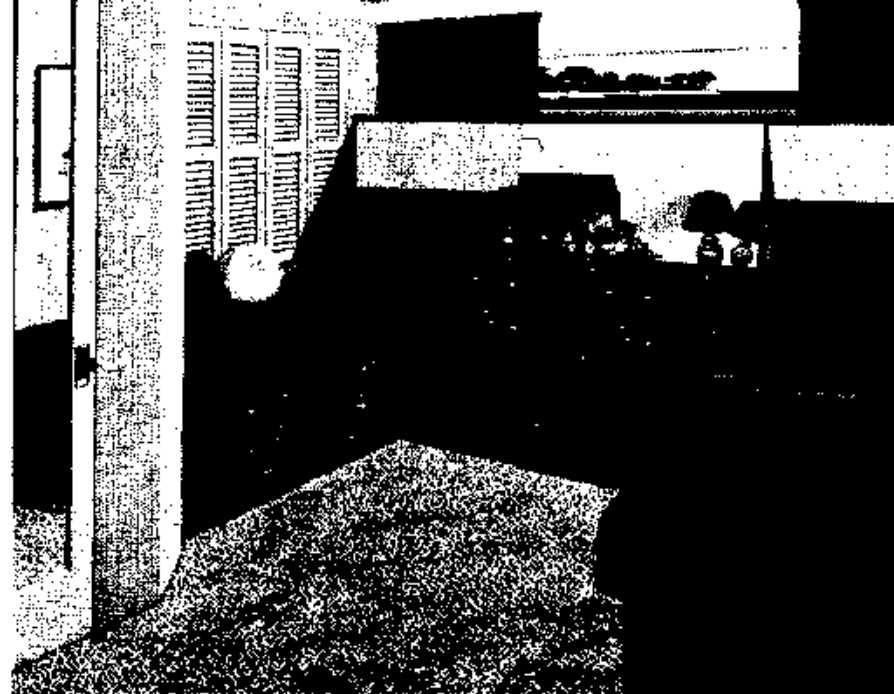
Length	42'0"
Beam	13'0"
Draft	37 1/2"







Main Salon looking Forward



Owner's Stateroom

45' COMMANDER

This new member of the Commander fleet offers exceptional comfort for cruising . . . and surprising speed and handling for a yacht of its size. Wide side decks and a generous foredeck area, both of which are flush with the aft deck, provide plenty of walkaround space.

Below, a handsome contemporary look has been carried out in shades of beiges and blues with wood and polished chrome accents. The main salon is entered from the bridge deck by a wide curved stairway with a walnut and stainless steel handrail. To port is a long convertible lounge and to starboard are the dining area with an optional extension dining table, four chairs, and a full electric galley. At the end of the counter containing the sink and range is a dropleaf section that adds extra counterspace for serving. The cook will delight in the cupboards, under-counter bins and drawers and shipside lockers . . . there's finally enough storage room! Full forward in the salon is a standing bar and buffet which holds service for 12, plus an ice bucket and storage

for 12 bottles. On the other side of the salon, the bulkhead is all mirror.

The entire aft section of the 45' Commander is devoted to the master stateroom and its adjoining bath. Large twin berths with drawers under flank a long, custom-built mirrored dresser. Large size portlights make the room bright and cheery. Built into the transom above one berth is a large storage locker with louvered doors, and extending down the starboard side of the stateroom is a long wardrobe with louvered bi-fold doors. Over the sink in the master bath: a medicine chest with sliding mirror doors. Next to it, a large stall shower, and on the other side, a hamper and locker storage.

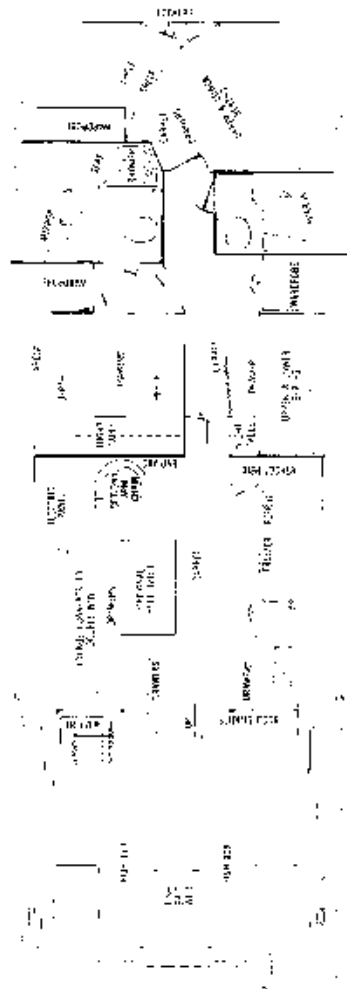
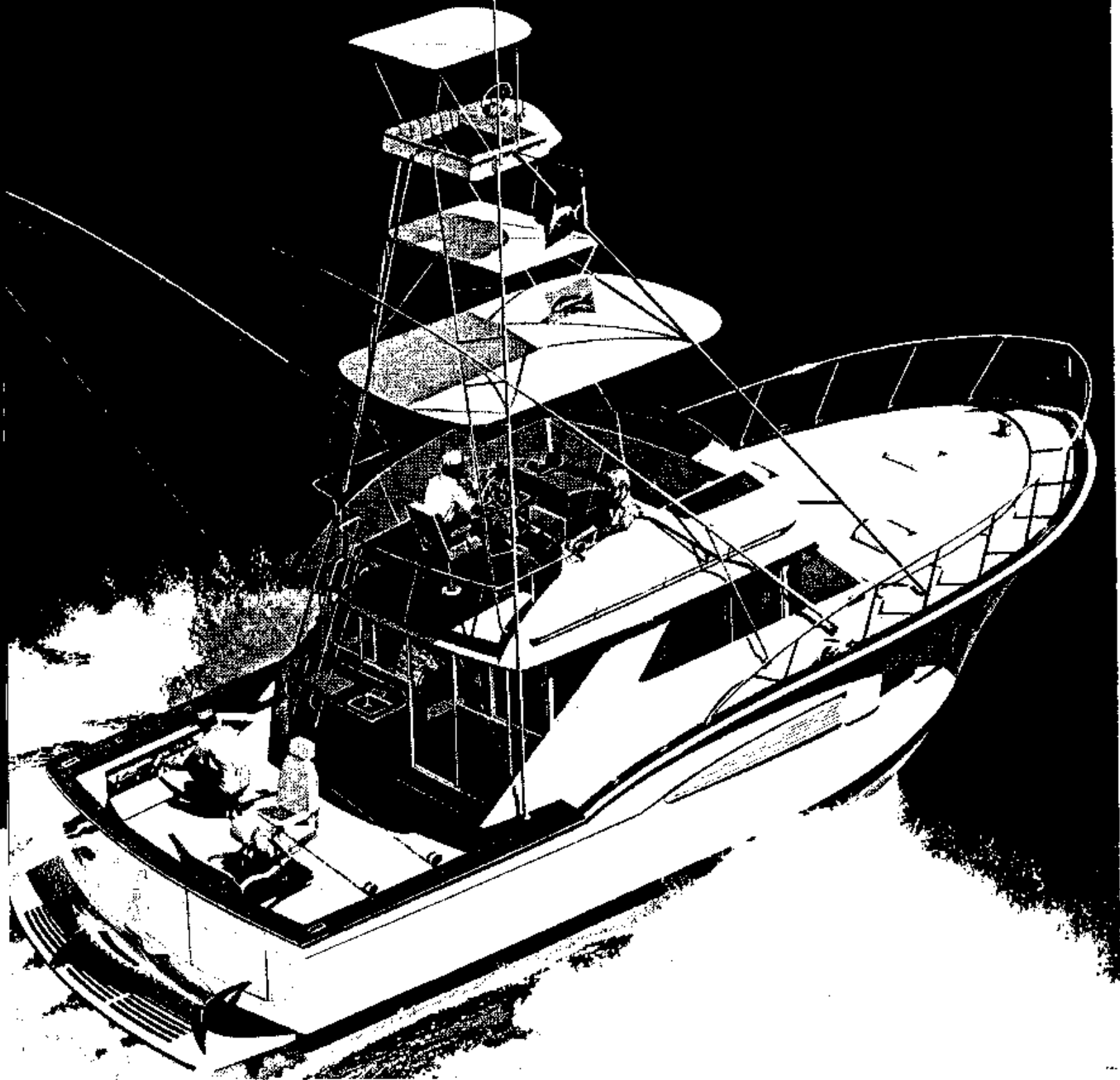
Chris-Craft didn't stint on space up in the forward section, either. Portside upper and lower berths are not the ordinary kind; the lower is double-size bed with headboard and the upper folds up when not needed. Wardrobe and dresser-with-mirror are opposite; open a

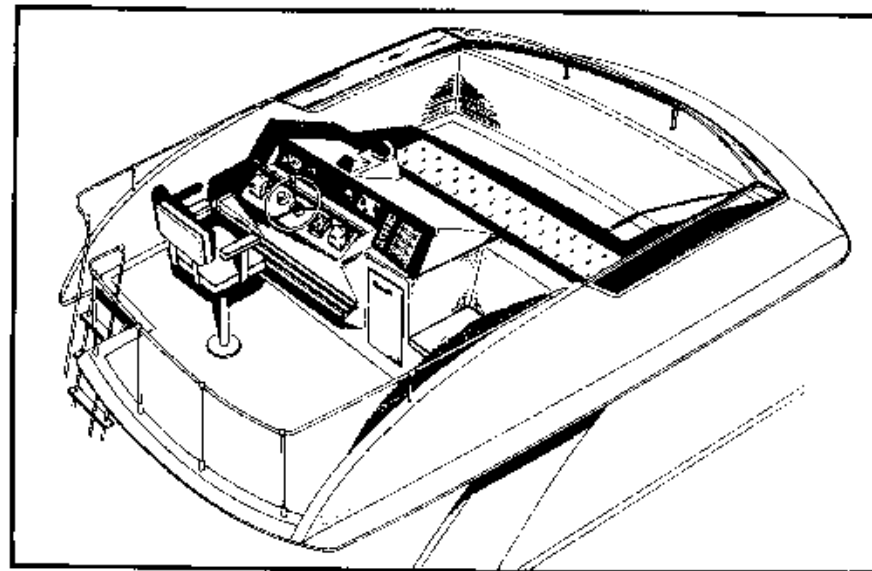
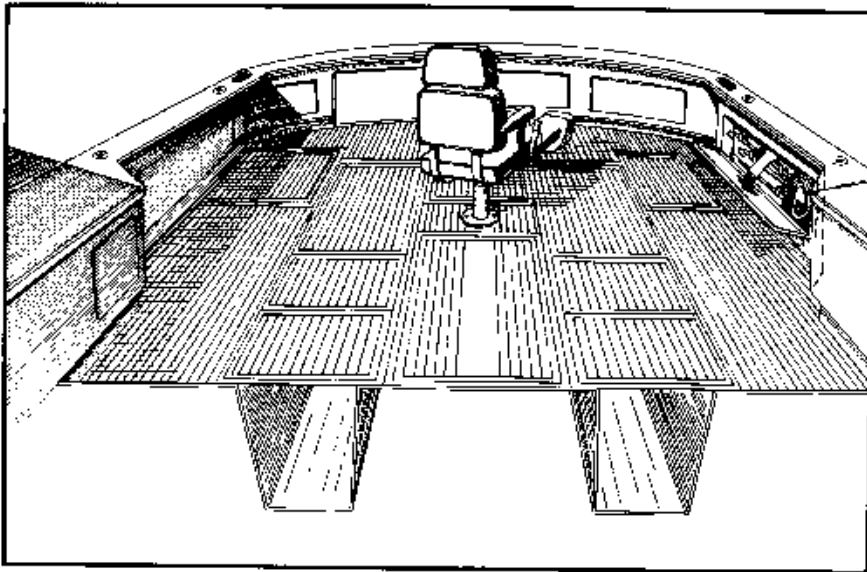
forward door and step into an extra-roomy bath for this end of the hull. It has a full stall shower with a seat.

The fuel tanks in 41 and 45 Commanders are positioned closer to the center of buoyancy to improve performance and reduce change of trim regardless of the amount of fuel aboard. In this model 500-gallon fuel capacity allows long-range cruising.

Chris-Craft's human-factor engineering is evident in the control station's design. All instruments are highly visible and all controls are easy to reach. Such things as tachometers, compass and optional depth sounder are lined up parallel to the centerline in the pilot's normal line of vision. Solid state circuitry minimizes malfunctions, and gauges, lights and buzzers are used to assist the pilot in keeping tabs on vital instruments.

Length	45'0"
Beam	15'0"
Draft	49½"





45' COMMANDER TOURNAMENT FISHERMAN

This boat is the result of three years of planning.

Chris-Craft set out to produce the perfect tournament fishing platform . . . and no compromises. Everything aboard was engineered to make it a part of a smoothly running fishing machine that is truly competitive. Starting in the cockpit, there's a transom door for bringing the big ones aboard. An optional transom platform with water nozzles to wet down catches. Two large flush fiberglass fish wells with removable surge baffles. A circular bait well with pump for live bait. A top-loading bait freezer with a cutting board, sink and water faucet. Lure lockers and gaff storage in the cockpit sides. Flush mounted rod holders in the covering boards (2 each side). A washdown hose with a sea water pump to clean the cockpit. And a base for a tournament fishing chair,

installed on the centerline, with supporting posts that are attached to the inboard engine stringers.

But there's more.

On the Command Bridge, the controls are set aft so the pilot can see the fishing chair as well as the fish. And it contains everything gamefish seekers need, such as fish-finding recording and flashing depth sounder and seawater temperature gauge. Plus some comforts you never expected to find on a Command Bridge. (See Standard Equipment List for complete details.)

A fully equipped custom tuna tower is optional. The reinforcement required for its installation is standard and already aboard. The special hull configuration starts with high deadrise forward for a sharp entry, which tapers to an

almost flat surface at the transom for excellent handling, speed and stability.

Belowdecks is an eight-sleeper layout that starts with a wide (beam is 16 feet), uncluttered deckhouse, moves forward into an owner's stateroom with twin berths, plus upper and lower berths to starboard. A second stateroom is well forward. Lavatories adjoin both staterooms, and the owner's has a stall shower.

Other points: This model has a standard fresh water maker that produces 16 to 20 gallons per hour. Turbine or diesel engines are available, delivering speeds that will get you where the fish are in less time. The fuel capacity is 600 gallons.

Length	45'6"
Beam	16'0"
Draft	46½"

Specifications contained in this literature are based on the latest product information available at the time of publication approval. The right is reserved to make changes at any time without notice in prices, colors, materials, equipment, specifications and models and also to discontinue models. Equipment and accessories pictured but not included in the list of standard equipment items will be furnished at extra cost if available irrespective of the place of manufacture. The right is reserved to ship from any Chris-Craft factory. All orders accepted subject to prices prevailing at time of shipment. Orders are subject to acceptance only at Chris-Craft Corp., Pompano Beach, Florida 33061.

All of the boats described herein are guaranteed under a written Chris-Craft warranty for specified periods of time against malfunctions resulting from defects in material or workmanship. For full details on the Chris-Craft warranty covering the Commander cruisers, contact your Chris-Craft dealer.

CHRIS-CRAFT CORPORATION

POMPANO BEACH, FLORIDA 33061