



THE 1968 CHRIS-CRAFT COMMANDERS



48' Powerboat with 200HP outboard



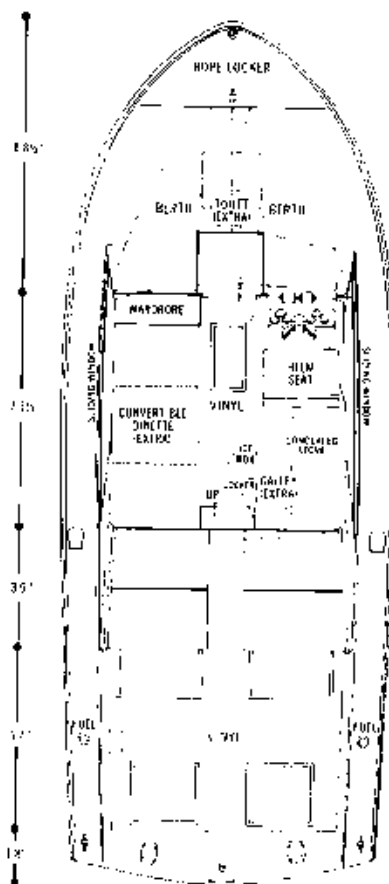
27' Sportboat with 150HP outboard



48' Powerboat with 200HP outboard



Twin-screw model with optional galley and dinette.



27

COMMANDER SPORTS EXPRESS

This high-performance hull is available in a number of ways. It can be an open boat with helm and companion seats and a wardrobe. It may have a soft top, hardtop, or a hardtop and Command Bridge. Single-screw model with a Chris-Craft 210-hp engine may have either a galley or dinette unit. Models with twin 185's may have both. Foam mattresses are optional for the forward V-berth platforms. Sleeping capacity can be two, or four, with the addition of a convertible dinette. Top speed is 38 miles per hour.

Specifications

Sleeping Capacity 2	Height from waterline (clearance)	
Length 27'0"	Open 6'5 1/2"
Beam 10'3"	Hardtop 6'6 1/2"
Draft (single screw) 25 1/4"	Command Bridge 9'7"
Draft (twin screw) 22 1/4"	Fuel Capacity, gallons (single screw)	... 48.7
Freeboard, forward 51 3/4"	Fuel Capacity, gallons (twin screw)	... 80
Freeboard, aft 37 3/4"	Fresh-water Capacity, gallons
Weight (lbs., estimated)	... 5,530 - 6,710	w/optional galley 14.6
Headroom 6'2"	Forward, Side and Aft Decks	... Fiberglass
		Cockpit Floor Vinyl-covered

Standard Equipment • Anchor Light • Battery Disconnect Switch • Bow Pole and Pennant • Cleats • Cockpit Step • Companion Seat with folding Footrest • Deck Hatch, forward • Electric Horn • Fire Extinguishers • Fog Bell • Helmsman Seat with Liding Footrest • Internal and Navigation Lights • Lide Presevers • Snipping Cradle • Stern Pole and Ensign • Vee Berths, less mattresses • Ventilating Windshield and Sliding Sideshields • Wardrobe



27

COMMANDE



Complete facilities for cruising four in comfort, in a fast, seaworthy, low-maintenance fiberglass hull. The forward area has foam-filled V-berths and a ventilating hatch which can serve as a second entrance. In the main cabin, a large dinette unit on the starboard side converts to a double bed. The galley has a concealed stove, sink with fresh water system, ice box, and storage. There's an enclosed, full-height lavatory with fiberglass sink and vanity. Bulkheads and paneling have rich natural wood finishes. Single 210-hp V8, or twin 185's; top speed is 37 mph.

Specifications

Sleeping Capacity	4
Length	27'0"
Beam	10'3"
Draft (single screw)	25 1/2"
Draft (twin screw)	22 1/2"
Freeboard, forward	51 1/2"
Freeboard, aft	37 1/2"
Height from waterline (clearance) to top of mast	9'3"
Weight (lbs, estimated)	6,290
Headroom	6'3"
Fuel Capacity, gallons (single screw)	48
Fuel Capacity, gallons (twin screw)	80
Fresh-water Capacity, gallons	14.6
Forward, Side and Aft Decks	Fiberglass
Cockpit Floor	Fiberglass

Standard Equipment • Alcohol Stove • Anchor Light • Battery Disconnect Switch • Bow Pole and Pennant • Carpeting • Chocks • Cleats • Deck Hatch, forward • Dinette, convertible • Dish Locker • Duck Lines, nylon • Electric Hoar • Fire Extinguishers • Foam Cushions and Mattresses • Fog Bell • Fresh Water System, manual • Galley Sink, enamel • Handrails on cabin top • Handrails, aft deck • Ice Box • International Navigation Lights • Life Preservers Mirror in Toilet Room • Shipping Cradle • Stern Pole and Ensign • Toilet, manual • Vee Berths • Wardrobe.



Hardtop and bow rails are optional.





31
**COMMANDER
SPORTS
EXPRESS**

This is as able a fishing machine as you'll find. She's available with twin 200, and 300-hp V6's, and the last pair will deliver a rocking 30 miles per hour. The cockpit is large, with a non-skid pattern in the fiberglass decking. There's a private lavatory opposite the control station. Foam mattresses are standard in the forward cabin, and the addition of a convertible duette seat (optional) can increase the sleeping capacity to

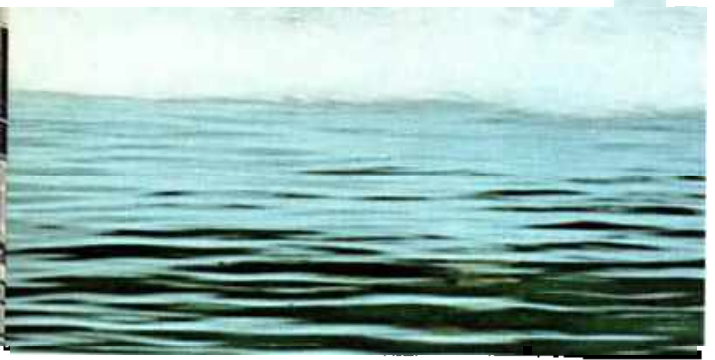
four persons. A complete galley and is also an option. Command Bridge with dual controls, seat, and ladder is extra. Cruise Control available

Specifications

Sleeping Capacity	3
Length	17'6"
Beam	3'7"
Draft	1'11"
Freeboard, forward	2'6"
Freeboard, aft	2'6"
Height from waterline (clean deck) to top of mast	11'3"
Height from waterline with Command Bridge to top of mast	11'3"
Weight (as estimated)	13,120 lbs.



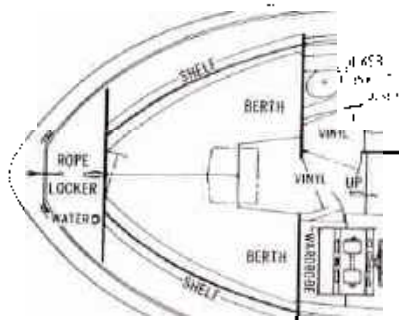
Galley and dinette (above) and bow and side rails (below) extra



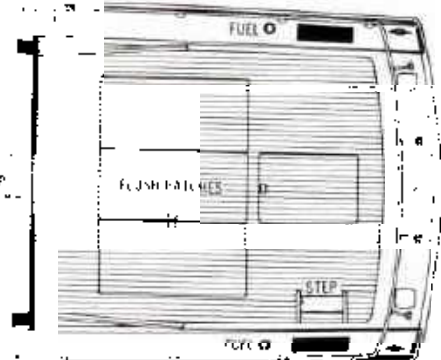
3'0" 6'0" 3'2" 6'5" 10'7" 4'10"

Holdroom 6'4"
 Fuel Capacity gallons 150
 Fresh water Capacity gallons 25
 Forward Side and Aft Docks Fiberglass
 Cockpit Floor Fiberglass

Standard Equipment • Anchor and Nylon Line
 Battery Disconnect Switches • Bow Pole and Pennant
 Checks • Coats • Cockpit Roll Gate • port and starboard
 Cockpit Step • Deck Hatch, forward • Deck Lanes, Nylon
 Electric Bilge Pump, automatic • Electric Horn • Fire Ex-
 tinguishers • Foam Mattresses • Fog Ball • Fresh
 Water System, extra • Handrails on handtop • Hand-
 rails, all deck • Handtop with Ventilating Windshield and
 Sliding Sideshields • Helmman Seat with folding Foot
 rest • Internal and Navigation Lights • Life Preservers
 Mirror or toilet room • Radio, Ground • Shopping Casket
 Stain Pole and Upsight • Toilet, manual • Toilet Room
 Blower • Vee Berths • Wardrobe • Windshield Wiper



SLIDING GLASS
 VINYL
 UP
 RIM
 SLAT
 SLIDING GLASS

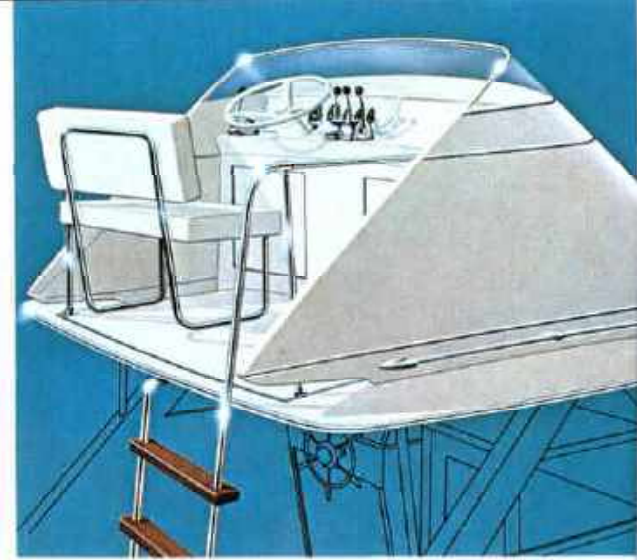




Compact galley has natural wood cabinetry.



Lavatory has fiberglass sink and vanity.



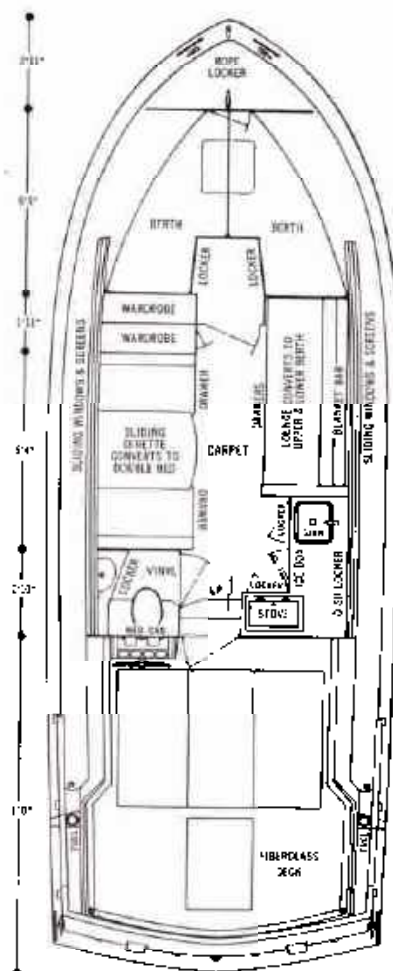
Fiberglass Command Bridge is extra.





Forward view of main cabin.

Below: Bow and side rails optional.



31
COMMANDER

Cruising capacity: six. Type of accommodations: luxurious. Starting with the forward stateroom that offers the privacy most people desire, this Commander has all of the things a party of six would wish for on cruises. The main cabin has opposing dinette and lounge areas to make entertaining convenient. The lounge converts to berths, and the dinette into a comfortable double bed. An L-shaped galley and an enclosed lavatory are just aft. All decks, and the cockpit floor are non-skid fiberglass. Powered by twin 210-hp Chris-Craft V8's, top speed is 35 miles per hour. Cruise Control optional.

Specifications

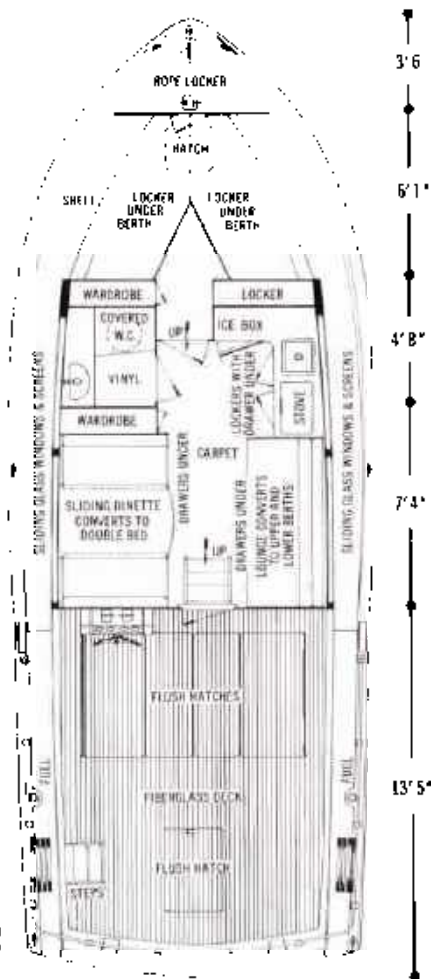
Sleeping Capacity.....6	Height from waterline
Length.....31'0"	(clearance) to top of mast.....9'11"
Beam.....11'3 1/4"	Headroom.....6'3 1/4"
Draft.....27 1/2"	Fuel Capacity, gallons.....100
Freeboard, forward.....54 1/2"	Fresh-water Capacity, gallons.....25
Freeboard, aft.....38 1/2"	Forward, Side and Aft Decks.....Fiberglass
Weight (lbs., estimated).....10,660	Cockpit Floor.....Fiberglass

Standard Equipment • Alcohol Stove • Anchor and Nylon Line • Battery Disconnect Switches • Bow Pole and Paint • Carpeting • Chocks • Cleats • Cockpit Rail Gates • Deck Hatch, forward, aluminum with vent • Dinette, convertible • Dish Locker • Dock Lines, nylon Draperies • Electric Bilge Pump, automatic • Electric Horn • Fire Extinguishers • Foam Cushions and Mattresses • Fog Bell • Fresh Water System, manual • Galley Sink, stainless steel • Handrails on cabin top • Handrails, aft deck • Helmsman Seat with folding Footrest • Ice Box • International Navigation Lights • Life Preservers • Lounge, converts to upper and lower berths • Mast with Anchor Light • Medicine Cabinet with Mirror • Radio Ground • Screens • Shipping Cradle • Stern Pole and Ensign • Toilet, manual • Vee Berths Ventilating Flybridge Windshield and Glass Sideshields • Wardrobes • Wash Basin, fiberglass Weather Cloths • Windshield Wiper.

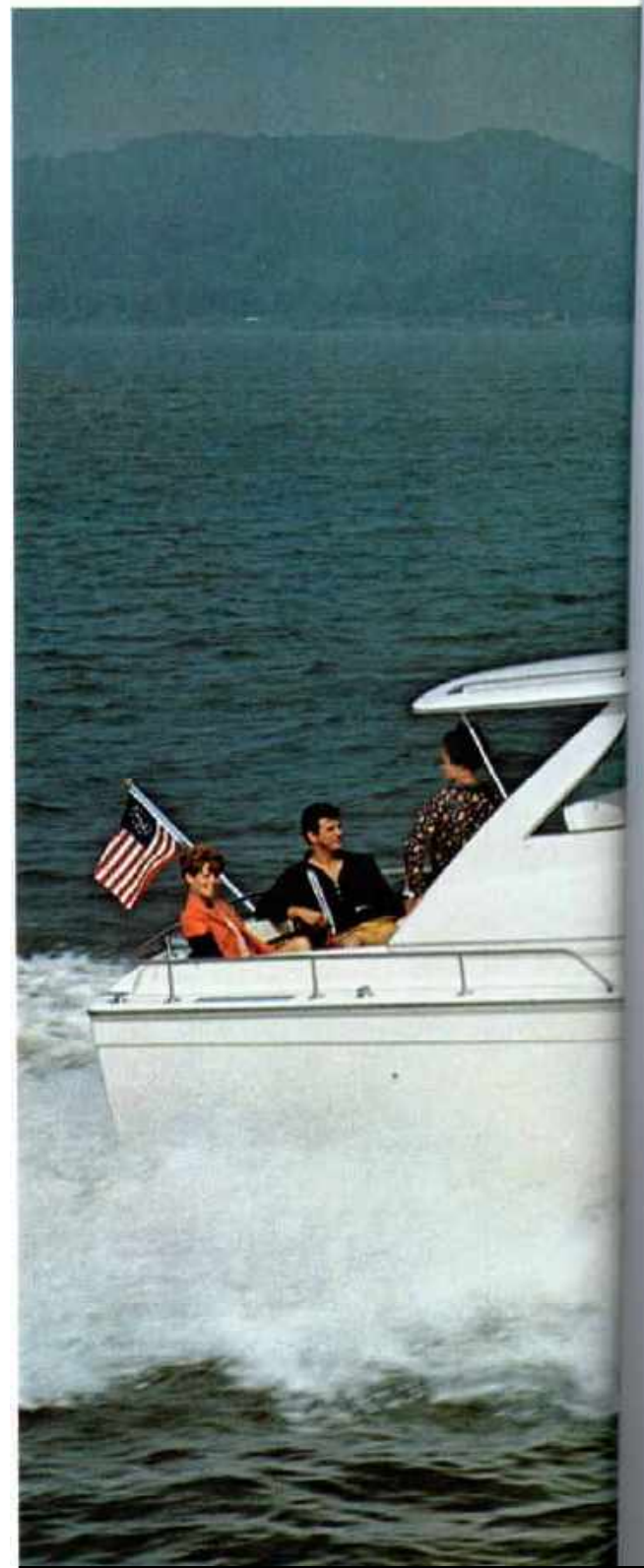


35

COMMANDER



Looking forward in main cabin.



The rounded hull configuration of the 38' Commander was the model for this new six-sleeper, which offers comfortable accommodations and complete facilities for cruising. The private forward stateroom has four V-berths and its own wardrobe. The lavatory adjoining may have a shower (extra). Beam is a generous 13 feet. Basic galley equipment may be replaced with all-electric appliances (optional). Exterior features: the hardtop with sliding sideshields (standard); a molded fiberglass sun lounge on the foredeck (standard); fiberglass decks that look like teak and feel like teak (standard); the high, sweeping sheer that indicates dry riding in rough going; and the Vee transom for better control in following seas. Power options: twin 210 or 300-hp engines; speeds to 35 mph. Cruise Control optional.

Specifications

Sleeping Capacity	6	Height from waterline	
Length	35'0"	(clearance to top of mast)	11'7"
Beam	13'0"	Headroom	6'4 1/2"
Draft	35 1/2"	Fuel Capacity, gallons	175
Freeboard, forward	67 1/2"	Fresh-water Capacity, gallons	50
Freeboard, aft	46 1/2"	Forward, Side and Aft Decks	Fiberglass
Weight (lbs., estimated)	14,420-14,930	Cockpit Floor	Fiberglass

Standard Equipment • Alcohol Stove • Anchor and Nylon Line • Bow Pole and Pennant Carpeting • Chocks • Cleats • Cockpit Rail Gate, port & starboard • Cockpit Step • Deck Hatch, forward, aluminum with vent • Dinette, convertible • Dish Locker • Dock Lines, nylon • Draparies Electric Bilge Pump, automatic • Electric Horn • Fire Extinguishers • Foam Cushions and Mattresses Fog Bell • Fresh Water System, manual • Galley Sink, stainless steel • Handrails on cabin top and hardtop • Handrails, aft deck • Hardtop with Ventilating Windshield and Sliding Sideshields Helmman Seat with folding Footrest • Ice Box • Interchangeable Navigation Lights • Life Preservers Lounge, converts to upper and lower berths • Mast with Anchor Light • Mirror in toilet room • Mooring Bitt with Rope Deck Opening • Radio Ground • Screens • Shipping Cradle • Stern Pole and Ensign • Toilet, manual • Vee Berths • Wardrobes • Windshield Wiper.



Galley has plenty of counter space and storage.



Lavatory. Toilet has covered seat.



Bow rails shown are optional.





COMMANDER

When Chris-Craft introduced this first Commander four years ago, a quiet revolution in fiberglass boatbuilding began, and hasn't stopped. This 1968 version is better than ever, with a number of engineering refinements and styling improvements. The forward section has the privacy of an enclosed stateroom and an adjoining lavatory with shower (standard), which may be entered from the stateroom or the main cabin. The galley is all-electric. Power choices are twin 300-hp V8's, or 197-hp, or 258-hp diesels. Speeds to 33 mph. The list of standard equipment items which are normally called "extras" includes hot and cold water system, helm and companion seats, dockside wiring, bow and side rails, electric bilge pump, bilge blower, draperies, nylon carpeting, and windshield wipers. Cruise Control standard on diesel version, optional on gasoline models.

Specifications

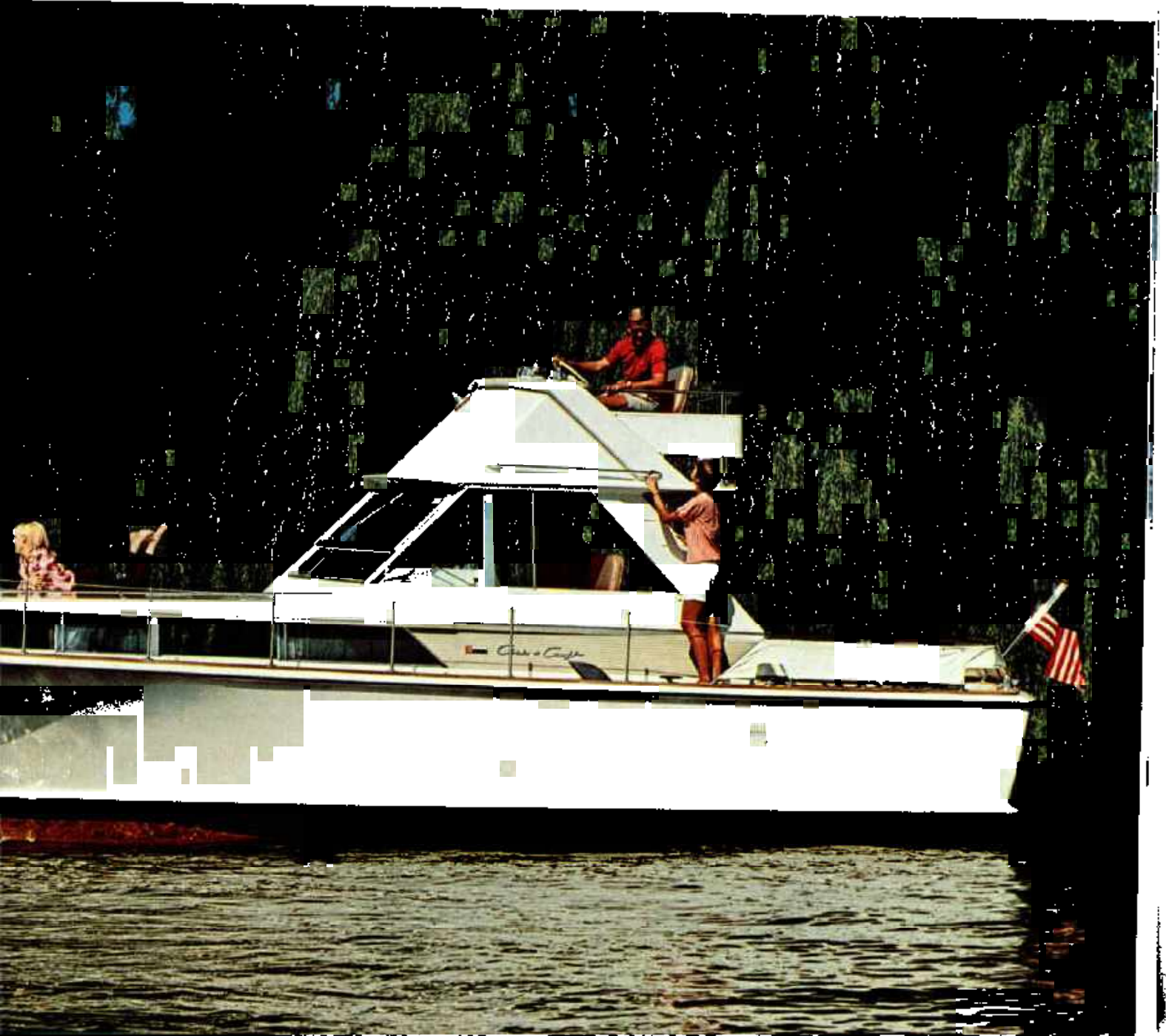
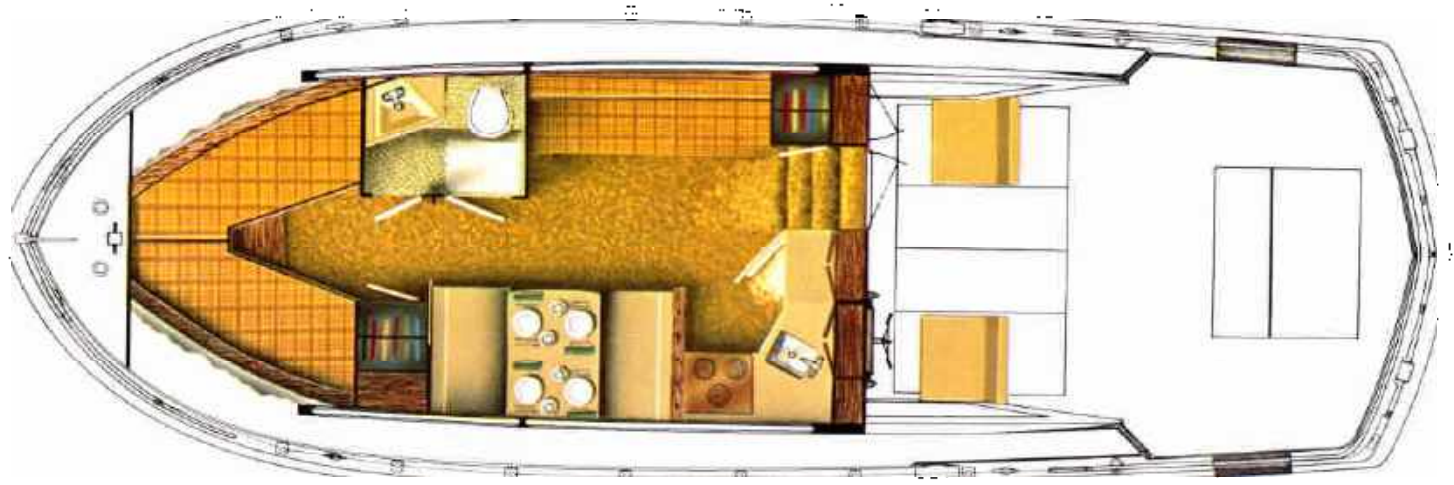
Sleeping Capacity	6	Height from waterline to top of Command Bridge	12'7"
Length	38'0"	Weight (lbs., estimated)	17,843/20,470
Beam	13'3"	Headroom	6'4½"
Draft	36"	Fuel Capacity, gallons	200
Freeboard, forward	63"	Fresh-water Capacity, gallons	75
Freeboard, aft	44"	Forward, Side and Aft Decks	Fiberglass
Height from waterline (clearance) to top of mast	12'0"	Cockpit Floor	Fiberglass

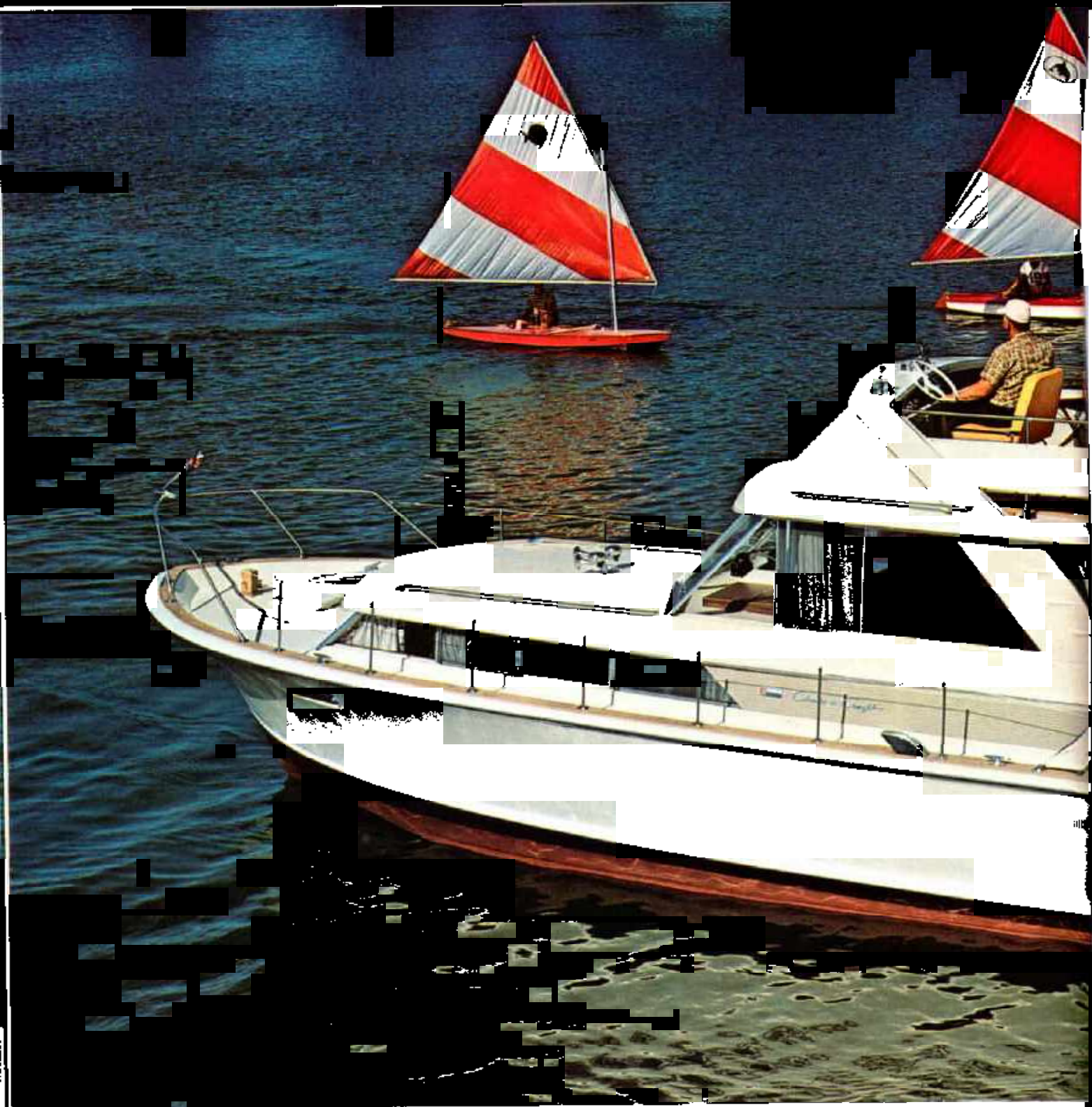
Standard Equipment • Anchor and Nylon Line • Battery Disconnect Switches • Bilge Blower • Bow Pole and Pendant • Carpeting • Chocks • Circuit Breaker Fusing, AC and DC • Cleats • Cockpit Rail Gates • Companion Seat with folding Footrest • Compass • Cruise Controls (standard on diesel models only) • Deck Hatch, forward, aluminum with Vert • Danette, convertible • Dish Locker • Deck Lines, nylon • Dockside Wiring, 115-volt, 30 amps with one Waterproof Inlet and five Cabin Bullets with 50' of Shore Cable with Adapter and Voltmeter • Draperies • Electric Bilge Pump, automatic • Electric Horn • Electric Refrigeration, 6.5 cu. ft. • Electric Stove, 3-burner with Oven and Milkshaker • Fire Extinguishers • Foam Cushions and Mattresses • Fog Bell • Galley Sink, stainless steel • Handrails on cabin top and Janitop • Handrails, bow, side and all decks • Hardtop with Ventilating Windshield and Sliding Sideshields • Helmman Seat with folding Footrest • International Navigation Lights • Life Preservers • Lounge, converts to upper and lower berths • Mast with Anchor Light • Mirror in toilet room • Mooring Bitts Mufflers • Radio Ground • Screens • Shipping Cradle • Shower • Stern Pole and Ensign • Toilet, electric • Vee Berths • Wardrobes • Water Pressure System, hot and cold • Weather Cloths • Windshield Wipers (2).



Optional Command Bridge with dual controls.





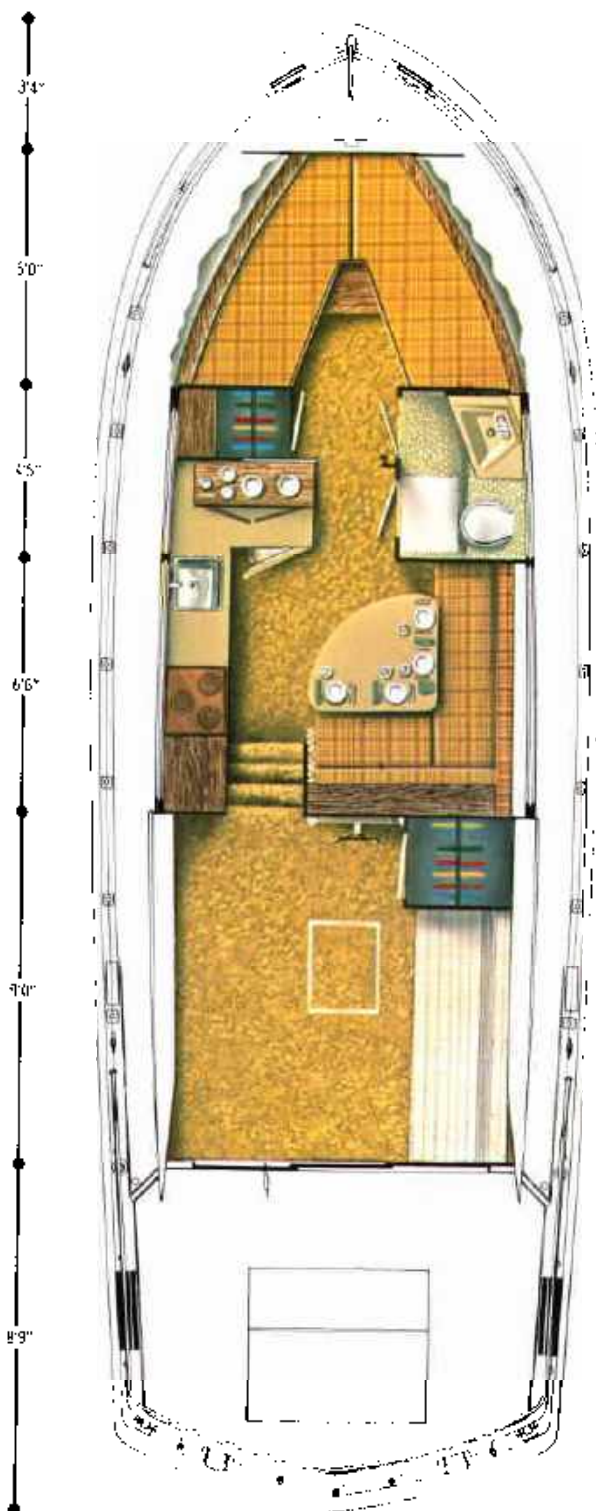


The forward stateroom of this model is similar to the regular 38' Commander, but the cabin plan similarity ends there. In the aft-starboard corner of the main cabin is an L-shaped dinette area. With a few simple movements it can be converted to a curtained-off private stateroom with upper and lower berths, with a bedside seat and a night shelf. Opposite this unique area is one of the largest galleys (all electric) you'll see on the water. Sleeping capacity is six. The sedan deckhouse has a convertible lounge and sliding aft doors which open onto the cockpit. A Command Bridge is available for the broad hardtop. Twin 300-hp Chris-Craft V8's or 197-hp or 258-hp diesels; speeds to 33 miles per hour. Chris-Craft's Cruise Control is an optional extra with gasoline engines, and standard equipment with diesels.



38

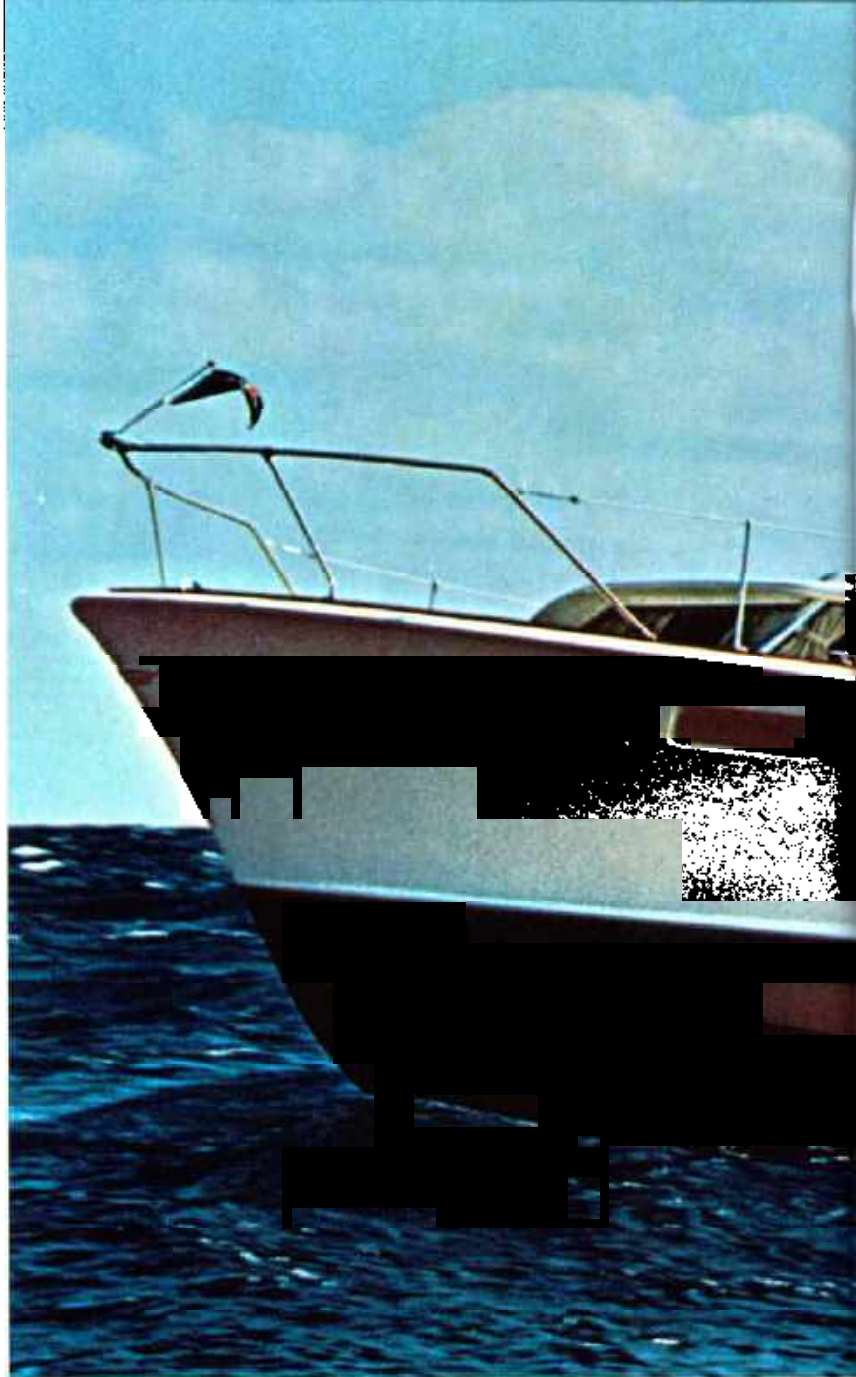
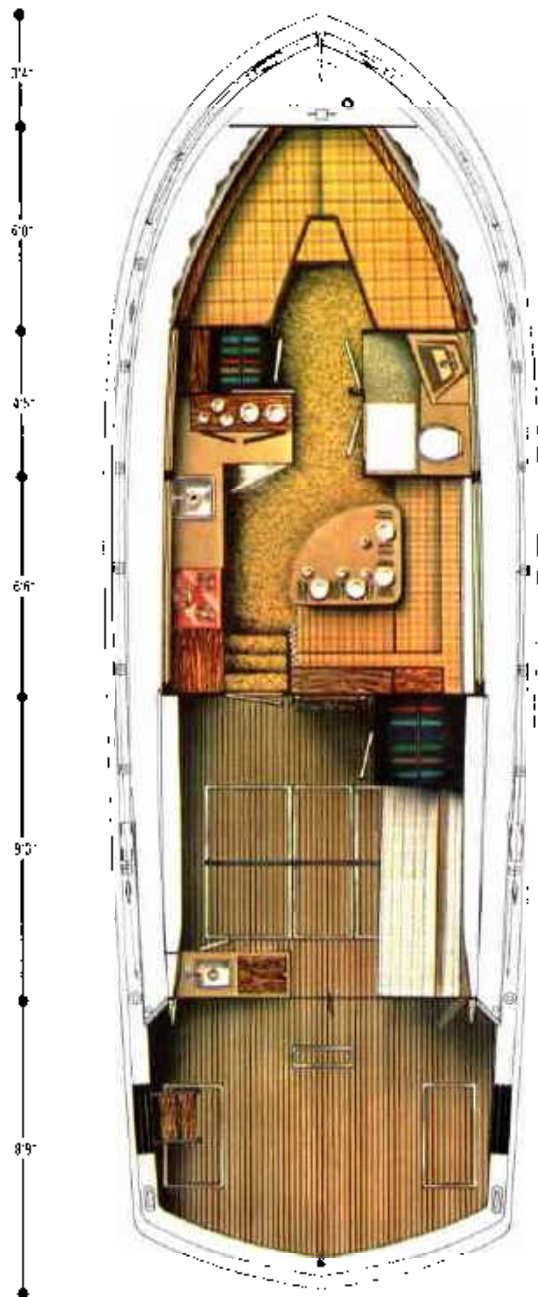
COMMANDER SEDAN



Sleeping Capacity 6
 Length 38'0"
 Beam 13'0"
 Draft 36"
 Freeboard, forward 63"
 Freeboard, aft 44"
 Height from waterline (clearance) to top of mast... 12'0"

Height from waterline to top of Command Bridge 12'7"
 Weight (lbs., estimated) 18,580-21,200
 Headroom 6'4 1/2"
 Fuel Capacity, gallons 200
 Fresh-water Capacity, gallons 75
 Forward, Side and Aft Decks Fiberglass
 Cockpit Floor Fiberglass

Standard Equipment • Anchor and Nylon Line • Battery Disconnect Switches • Bilge Blower • Bow Pole and Pennant • Carpeting • Checks • Circuit Breaker Fusing, AC and DC • Cleats • Cockpit Rail Gates • Compass Cruise Controls (standard on diesel models only) • Deck Hatch, forward, aluminum with Vent • Dine-In, convertible Dish Locker • Dock Lanes, nylon • Docks/Wiring, 115 volt, 30 amps with one waterproof Inlet and five cabin Outlets with 50' of Shore Cable, Adapter and Voltmeter • Draperies • Electric Bilge Pump, automatic • Electric Horn • Electric Refrigeration 6.5 cu. ft. • Electric Stove, 3-burner with Oven and Rotisserie • Fire Extinguishers • Foam Cushions and Mattresses • Fog Bell • Galley Sink, stainless steel • Handrails on cabin top and hardtop • Handrails, bow, side and aft decks • Hardtop with Ventilating Windshield and Sliding Sideshields • International Navigation Lights • Life Preservers • Mast with Anchor Light • Mirror in Toilet Room • Moving Batts • Mufflers • Radio Ground • Rope Deck Pipe • Screens • Shipping Cradle • Shower • Sofa Lounge, converts to double bed • Stern Pole and Ensign • Toilet, electric • Vee Berths • Wardrobes • Water Pressure System, hot and cold • Weather Cloths • Windshield Wiper.



COMMANDER SPORT FISHERMAN

38

The speed and seaworthiness of the 38' Commander hull lends itself perfectly to adaptation as a fishing boat. It has just about everything custom-built sportfisherman models offer, plus a number of features that only Commanders can offer. The private forward stateroom and main cabin are similar to the Sedan model, however the deckhouse is semi-enclosed. At the aft end of the

deckhouse, and opposite the convertible lounge, is a service bar with sink and ice box, which has infinite usefulness on all sorts of excursions. The fishing bridge comes complete with dual controls, helm seat, full instrumentation, guard rails, and ladder. Power: choice of twin 300-hp V8's, or 197-hp or 258-hp diesels. 33 miles per hour is top speed. Cruise Control is standard with diesels and optional with gasoline installations.



Specifications

Sleeping Capacity	6
Length	38'0"
Beam	13'0"
Draft	36"
Freeboard, forward	63"
Freeboard, aft	44"
Height from waterline (clearance) to top of mast	13'9 1/4"
Weight (lbs., estimated)	19,350-21,980
Headroom	6'4 1/2"
Fuel Capacity, gallons	250
Fresh-water Capacity, gallons	90
Fresh-water Capacity, gallons w/diesels	75
Forward, Side and Aft Decks	Fiberglass
Cockpit Floor	Vinyl-planking

Standard Equipment • Anchor and Nylon Line
Anchor Light • Battery Disconnect Switches • Bike
Blower • Bow Pole and Pennant • Carpeting • Chocks

Circuit Breaker Fusing, AC and DC • Cleats • Com-
mand Bridge with Dual Controls and Ladder • Command
Bridge Seat • Compass • Cruise Controls (standard
on diesel models only) • Deck Hatch, forward, alumi-
num with Vent • Dinettes, convertible • Dish Locker
Dock Lines, nylon • Dockside Wiring 115-volt, 30 amps
with one Waterproof Inlet and five Cabin Outlets with
50' of Shore Cable, Adapter and Voltmeter • Draperies
Electric Bilge Pump, automatic • Electric Horn • Elec-
tric Refrigeration, 6.5 cu. ft. • Electric Stove, 3-burner
with Oven and Rotisserie • Fire Extinguishers • Foam
Cushions and Mattresses • Fog Bell • Galley Sink,
stainless steel • Handrails on cabin top • Handrails,
bow and side decks • Hardtop with Ventilating Wind-
shield and Sliding Sidescreens • International Navi-
gation Lights • Life Preservers • Mirror in toilet room
Mufflers • Radio Ground • Rope Deck Pipe • Screens
Service Bar with Ice Box and Sink • Shipping Cradle
Shower • Sofa Lounge, converts to double bed • Stern
Pole and Ensign • Toilet, electric • Vee Berths
Wardrobes • Water Pressure System, hot and cold
Windshield Wiper.





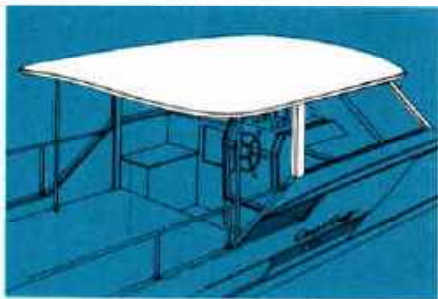
COMMANDER

The lack of bulky structural supports in Commander hulls can be appreciated fully here. A modern double-cabin flybridge design with an enlarged sundeck, she offers delightfully roomy dimensions both above and below decks. Headroom throughout is 6' 2" and up. The master stateroom aft has two wide berths, two dressers, and a large wardrobe. An adjoining lavatory has a stall shower (standard). The main salon has twin lounges on either side of a dining table which adjusts to coffee-table height. A serving bar separates the main salon from the galley which is a step lower. Appliances are all electric. The forward section holds another private stateroom and a second lavatory. 300-hp V8 engines provide 29-mph speeds; 258-hp diesels also available. Cruise Control is standard on diesel installations, optional on gasoline. A hardtop is optional; headroom is 5' 2" except in the well under the helm where it is 6' 4".

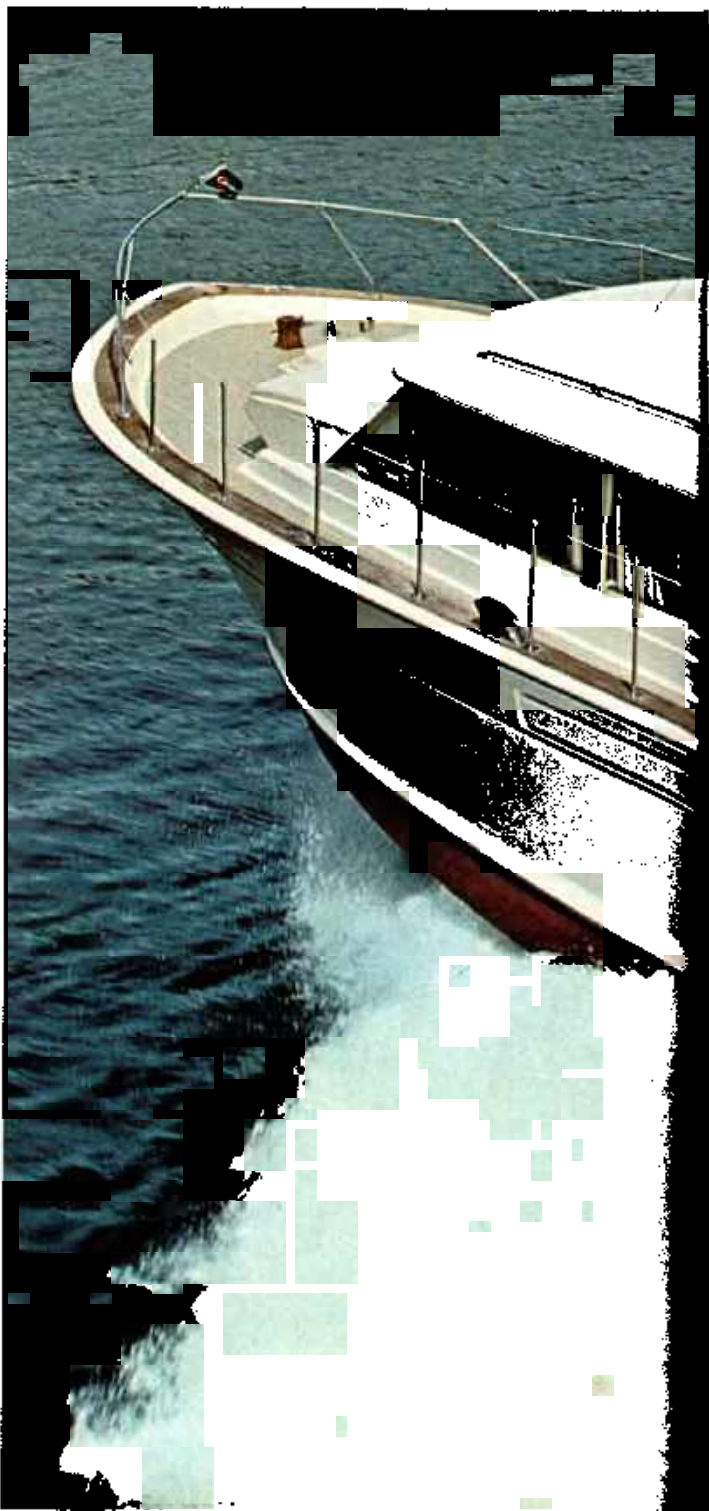
Specifications

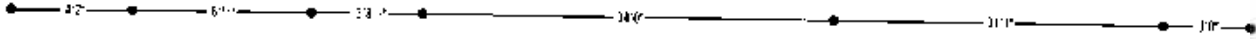
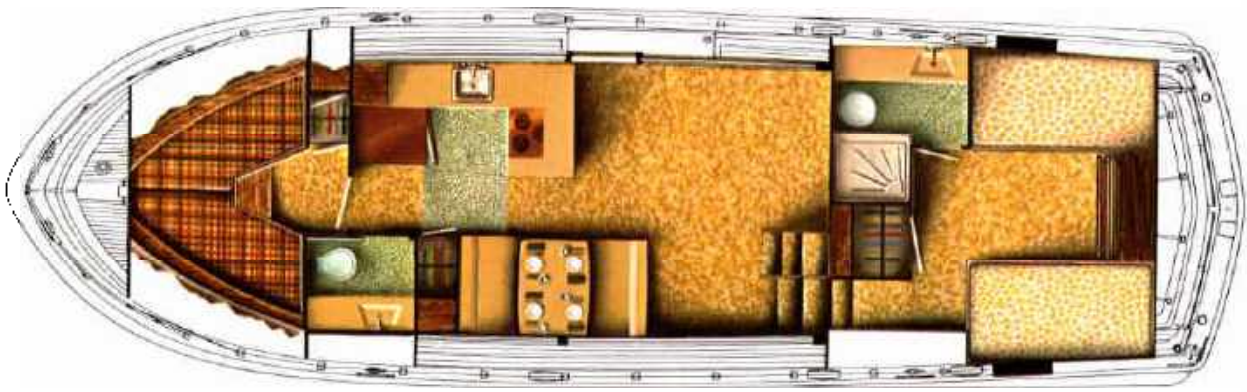
Sleeping Capacity	6	Height from waterline	
Length	42'0"	(clearance) to top of mast . . .	16'10 1/2"
Beam	13'0"	Headroom	6'3"
Draft	37 1/2"	Fuel Capacity, gallons	250
Freeboard, forward	76 3/4"	Fresh-water Capacity, gallons	70
Freeboard, aft	55"	Forward, Side and Aft Decks . . .	Fiberglass
Weight (lbs., estimated)	23,940-27,120	Sundeck Floor	Fiberglass

Standard Equipment • Anchor and Nylon Line • Battery Disconnect Switches • Bedsreads • Bilge Stover • Bow Pole and Pennant • Carpets • Chocks • Circuit Breaker Fusing, AC and DC • Cleats • Sundeck Rail Gates • Compass • Convertible Dinette with Hi-lo Table • Cruise Controls (standard on diesel models only) • Deck Hatch, aft • Deck Hatch, forward, aluminum with Vent • Dish Locker • Dock Lines, nylon • Dockside Wiring, 115-volt, 30 amps with two Waterproof Inlets and nine Cabin Outlets with 50' of Shore Cable, Adapter and Voltmeter • Draperies • Electric Bilge Pump, automatic • Electric Horn • Electric Refrigeration, 10 cu. ft. • Electric Stove, 3-burner with Oven and Rotisserie • Fire Extinguishers • Foam Cushions and Mattresses • Fog Bell • Folding Top and Side Curtains • Galley Sink, stainless steel • Handrails on cabin top • Handrails, bow, side and sundeck • Helmsman Seat, stool type • International Navigation Lights • Life Preservers • Mast with Anchor Light • Mirror in toilet room • Mooring Bitts • Mufflers • Radio Ground • Rope Deck Pipe • Screens • Shipping Cradle • Shower, aft • Stern Pole and Ensign • Sun Lounger with Cushions, forward deck • Toilet, manual, forward • Toilet, electric, aft • Ventilating Flybridge Windshield • Wardrobes • Water Pressure System, hot and cold • Windshield Wipers.



A hardtop is offered as an optional extra.





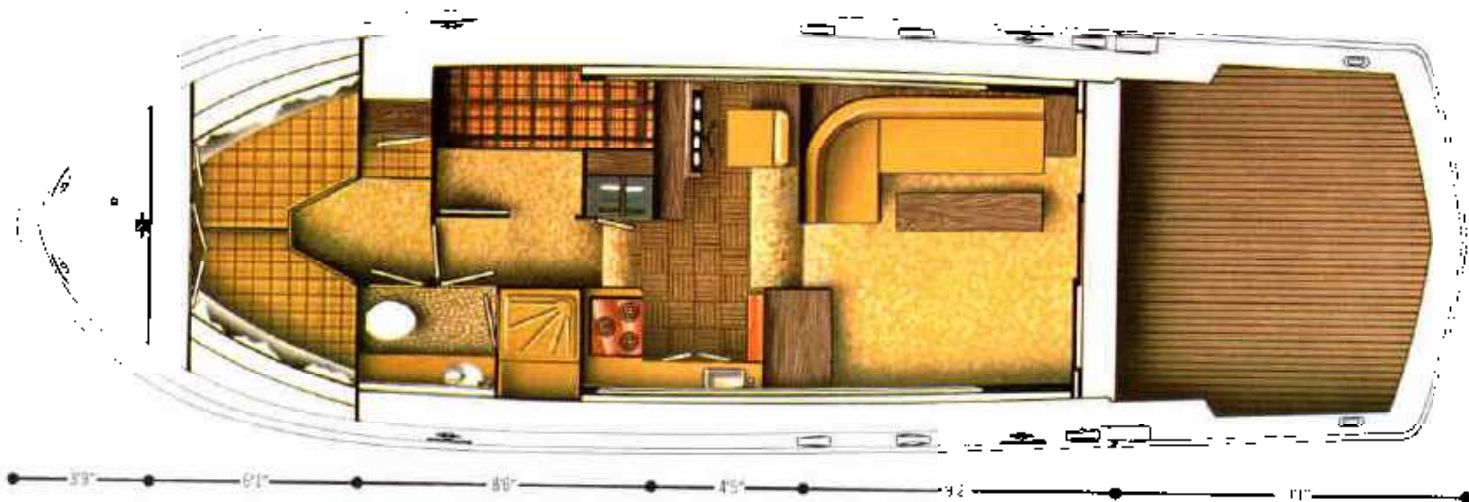
42

**COMMANDER
SPORTS
CONVERTIBLE**

This brand-new model is a unique design which blends the advantages of a salty sport fisherman with those of a luxury sedan cruiser. The result is an unusually versatile, comfortable, and sensible pleasure boat. Sleeping capacity is six. There are two private staterooms forward, plus a lavatory with an enclosed stall shower. The spacious deckhouse has a helm seat, and L-shaped convertible lounge, and a coffee table that may be raised to

normal dining table height. A well-planned galley with electric appliances and plenty of storage room is just forward. At the aft end of the deckhouse, sliding doors open to extend the entertaining area into the cockpit. A Command Bridge is standard. Power choices include twin 300-hp V8's or 258-hp diesels; speeds to 29 miles per hour. Cruise Control is standard on diesel models, and optional on gasoline-powered versions.

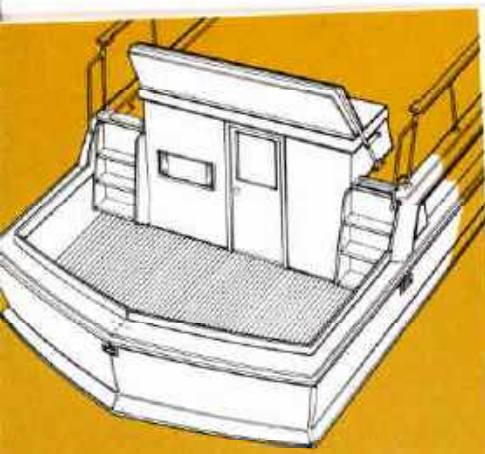




Specifications

Sleeping Capacity	6
Length	42'0"
Beam	13'0"
Draft	38"
Freeboard, forward	76 1/2"
Freeboard, aft	44"
Height from waterline (Clearance) without mast	13'1 1/2"
with mast	15'4 1/2"
Headroom	6'4"
Weight (lbs., estimated)	22,443 25,621
Fuel Capacity, gallons	300
Fresh Water Capacity, gallons	150
Forward and Side Decks	Fiberglass
Aft Deck	Teak
Cockpit Floor	Vinyl Covered

Standard Equipment • Anchor and Nylon Line • Battery Disconnect Switches • Bilge Blower • Bow Pole and Pennant • Carpeting • Chocks • Circuit Breaker Fusing, AC and DC • Cleats • Cockpit Step • Command Bridge with Dual Controls • 2 Compasses • Cruise Control (standard on diesel models only) • Deck Hatches (3), forward Aluminum with Vent • Dish Locker • Dock Lines • Dockside Wiring, 115-volt, 30 amps with two Water proof Inlets and seven Cabin Outlets with 50' of Shore Cable, Adapter, and Voltmeter • Draperies • Drop Leaf Table • Electric Bilge Pump, automatic • Electric Horn • Electric Refrigeration, 10 cu. ft. • Electric Stove, 3-burner with Oven and Stove Cover • Fire Extinguishers • Foam Cushions and Mattresses • Fog Bell • Galley Blower • Handrails on Hardtop • Handrails, Bow and Side Deck • Hardtop, with Ventilating Windshield and Sliding Sideshields • International Navigation Lights • Life Preservers • Mast with Anchor Light • Mirror in Toilet Room • Mufflers • Radio Ground • Rope Deck Pipe Screens • Seat, Command Bridge • Helmsman's Seat • Folding Fontrol • Shipping Cradle • Shower, forward • Sofa Lounge, converts to double bed • Stern Pole and Ensign Electric Toilet • Vee Berths • Wardrobes • Water Pressure System, hot and cold • Weather Cloths on Command Bridge • Windshield on Command Bridge • Windshield Wipers (2) • Wood Tow Post, forward • Shore Water Inlets P&S.



Optional fishing cockpit arrangement.



Large Command Bridge with dual controls is optional.



Master stateroom, aft, has mirrored wardrobe doors.



47
COMMANDER

This vessel features a beam of fifteen feet, which makes facilities of extraordinary size possible below. The aft section is available with a choice of plans: A) A single oversize stateroom is featured (standard). B) A large double stateroom and a compact guest stateroom close by (optional). C) A single aft stateroom with a large fishing cockpit at the stern—joined by a companionway door (optional). All plans are served by a big lavatory with standard stall shower. Single stateroom versions sleep eight and the other sleeps ten.

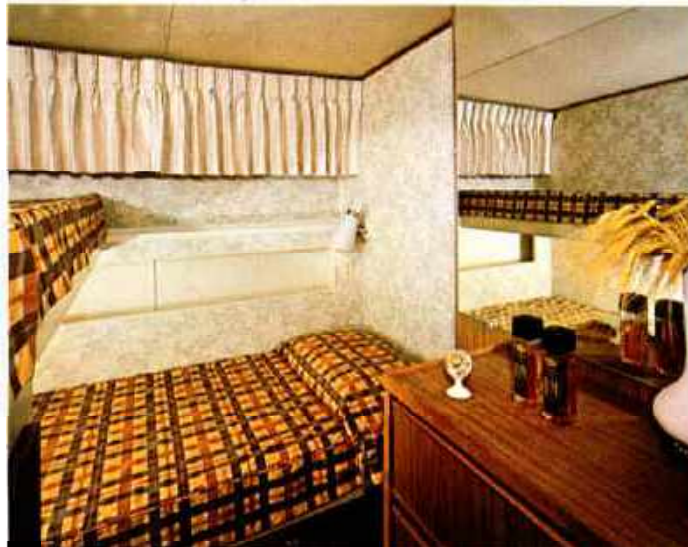
In the main salon, a modern convertible lounge converts to a full-size double bed. Forward of the salon, galley and dinette areas are well-placed for cooking and serving. The forward section has another double stateroom with adjoining lavatory and private entrance hatch. Directly under the galley-dinette area is a large hold for storage of luggage, provisions, etc. Power options include twin Chris-Craft 300-hp V8's or twin 258-hp diesels. Speeds to 25 mph. Cruise Control is standard on all versions of this model. Command Bridge extra.



U-shaped galley has electric appliances.

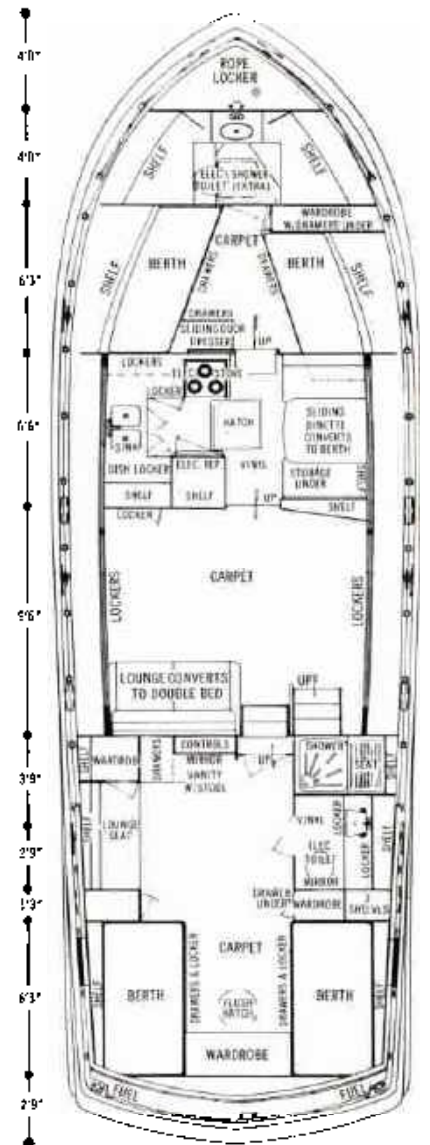


Forward stateroom, looking toward lavatory.

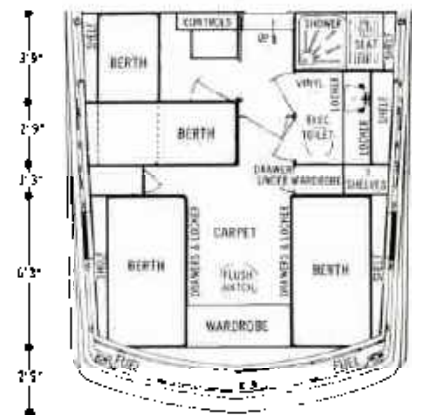


Above: guest stateroom in optional plan.

Below: main salon.



Optional aft cabin plan shown below.



Sleeping Capacity	8-10
Length	47'0"
Beam	15'0"
Draft	38"
Freeboard, forward	89 1/2"
Freeboard, aft	70"
Height from waterline (clearance) including anchor light	17'1 1/4"
Weight (lbs., estimated)	30,451-33,539
Headroom	6'4"
Fuel Capacity, gallons	350
Fresh-water Capacity, gallons	80
Forward, Side and Aft Decks	Fiberglass

Standard Equipment • Anchor and Nylon Line • Battery Disconnect Switches • Bedspreads • Bilge Blower • Bow Pole and Pennant • Carpeting • Chocks • Circuit Breaker Fusing, AC and DC Cleats • Compass • Cruise Controls • Deck Hatch, aft • Deck Hatch,

forward, aluminum with Vent • Dinette, convertible • Dish Locker Dock Lines, nylon • Dockside Wiring, 115-volt, 30 amps with two Waterproof Inlets and ten Cabin Outlets with 50' of Shore Cable, Adapters and Voltmeter • Diaperies • Electric Bilge Pumps, automatic (2) Electric Horn • Electric Refrigeration, 10 cu. ft. • Electric Stove, 3-burner with Oven and Rotisserie • Fire Extinguishers • Foam Cushions and Mattresses • Fog Bell • Galley Blower • Galley Sink, stainless steel • Handrails on cabin top • Handrails, bow, side and aft decks • Hardtop with Ventilating Windshield and Sliding Sideshields International Navigation Lights • Life Preservers • Mast with Anchor Light and Yardarm • Mirror in master stateroom • Mirror in toilet rooms • Mooring Bitts and Tow Post • Mufflers • Radio Ground Rope Deck Pipe • Screens • Shower • Sofa Lounge, converts to double bed • Stern Pole and Ensign • Sun Lounge with Cushions, forward deck • Toilets, electric (2) • Wardrobes • Water Pressure System, hot and cold • Weather Cloths • Windshield Wipers, electric (3),

**TECHNOLOGY AND PAINSTAKING CARE
ARE THE BASIC INGREDIENTS
IN THE SUPERIOR FIBERGLASS CONSTRUCTION
OF CHRIS-CRAFT COMMANDERS.**



Until Chris-Craft began producing fiberglass pleasure boats, the acknowledged standards for fiberglass boat construction were those of Gibbs & Cox, famous designers of the U.S. United States and many Navy vessels.

When Chris-Craft began producing Commanders, Chris-Craft engineers set about exploring new methods and construction techniques. In doing so, they found the need for new materials, which they consequently developed.

Thus new ground was broken in fiberglass boatbuilding technology.

Chris-Craft Commanders still meet Gibbs & Cox requirements. As well as the strength requirements of Lloyd's of London. But Commanders also meet Chris-Craft's own requirements—the highest of all.

Owens-Corning Fiberglas Corp. asked Chris-Craft to assist in updating the specifications for the entire fiberglass boatbuilding industry. The specifications were then presented to the industry at a meeting of the Society of Naval Architects and Marine Engineers.

Here are some of the honest differences between Commanders and other fiberglass boats:

1. Chris-Craft spends more time and care preparing molds. Boughton Cobb, Jr. wrote in *Yachting* after observing Commanders abuilding: "... she is one of the most beautiful fiberglass moldings we have ever seen. The high-gloss finish, the absolutely fair form of her hull and superstructure are the product of carefully built precision molds."

2. Commander hulls have all-fiberglass stiffening. Some boats use wood stringers, which in the presence of heat or moisture, expand more than fiberglass, and invite an ultimate breakdown of the structure. Using all-fiberglass construction, Chris-Craft attains a 33% reduction in hull weight over an equally strong wood-stiffened fiberglass boat.

3. Commanders have self-supporting hulls, which don't rely on bulkheads or components for strength and support. What's the difference? Plenty. When all bulkheads and components are molded to the hull, every shock and vibration goes into every corner of the boat. In heavy going, doors and

drawers work open. Merely bumping a dock can send sound and vibrations through poorly supported hulls.

4. The higher the percentage of fiberglass reinforcing in a polyester laminate, the stronger the finished structure will be. Chris-Craft has the highest fiberglass-to-resin ratio in the industry, yet Chris-Craft layups are light and compact. One reason for this is Duo-Glas, a fiberglass reinforcing material developed by Chris-Craft and used only on Chris-Craft boats. Duo-Glas provides more strength per pound than other fiberglass materials used in the marine industry, and makes it possible for boat sections to be both light and strong.



5. A new structural reinforcing material, "Synkore," is used on all Commanders. Another Chris-Craft development, it is found in sandwich construction applications such as decks and cabintops. Stronger than the balsa and plywood used by other boat-builders, it provides tremendous strength and is more compatible in terms of expansion and adhesion with polyester resin.

6. Chris-Craft has the most stringent specifications for gelcoats of anyone in the industry, requiring a 100% greater resistance to crazing, plus the

highest degrees of color and gloss retention.

Commander hullsides are not painted. They don't have to be. The painstaking preparation of the molds and the high-quality gelcoat used by Chris-Craft result in hard, mirror-like surfaces.



7. Chris-Craft has its own fiberglass research and development laboratory, where technicians are at work full time on new developments, quality control of incoming material and sections of completed boats, and new production techniques.

8. The design of Commander hulls is unique. Each is designed to provide the best performance for its length. And to conform with Chris-Craft strength requirements, each design must be able to withstand *three times* the strains and stresses of running through 6-foot seas at full speed.



9. CHRIS-CRAFT WARRANTY: For the first 24 months or 400 hours of operation, whichever comes first, Chris-Craft Corporation will repair or replace, at its option, parts defective by reason of faulty workmanship or material returned to the selling dealer with transportation charges to the point of manufacture. For the first 12 months or 200 hours of operation, whichever comes first, Chris-Craft will pay the labor costs as determined by its schedule for removal and reinstallation of such parts. Chris-Craft does not warrant used boat or engine purchases, paints, varnishes, chrome, gelcoats, racing boats or engines, altered boats or parts or speeds.



How do Commanders handle?

Capt. W.L. Farrington of Plantation, Fla. has no axe to grind. He's been an independent skipper for years, piloting boats for different builders and yards. After taking a new 47' Commander from Florida to Michigan, he wrote this unsolicited report:

"I ran her 2,100 miles and 220 hours and I have never had a finer riding or better handling boat under me in my life. The longer I ran, the more impressed I became. On my trip I encountered about all of the conditions that the average yachtsman would encounter in a lifetime and under all conditions the boat performed in unbelievable fashion."



There are many factory-installed accessories available for all Commander models. For a complete list and prices please see your Chris-Craft dealer or write the Chris-Craft factory.

Notes pertaining to all models: All prices are F.O.B. factory and include shipping cradle except on the 47' Commander which cannot be shipped by rail or truck due to clearances, but may be shipped via waterways and steamship to all parts of the world. Chris-Craft engines are installed unless otherwise specified by purchaser. Speeds shown herein were obtained either by actual tests or are estimates based on engineering calculations. The test is conducted over a certified course with fuel and water tanks two-thirds full, a driver only, and is averaged in two directions, with and against the wind and current. The stated speed is based on the maximum horsepower specified for each new boat at full throttle operation. Model lengths are stated to the exact foot. Prices and specifications contained in this literature are based on the latest product information available at the time of publication approval. The right is reserved to make changes at any time without notice in prices, colors, materials, equipment, specifications, and models and also to discontinue models. Equipment and accessories pictured but not included in the list of standard equipment items will be furnished at extra cost if available. Approved accessories for factory installation are available; for details see Accessory Price List. Irrespective of the place of manufacture the right is reserved to ship from any Chris-Craft factory. All orders accepted subject to prices prevailing at time of shipment. All boat weights shown in specifications are estimated shipping weights and include shipping cradle (except 47' Commander), etc.

All 1968 Commander models meet the Coast Guard regulations established for international navigation lights effective Sept. 1, 1965.

Chris-Craft **COMMANDER**
Chris-Craft Corporation, Pompano Beach, Florida 33061