

## **What is the difference between a 360 Commander and a 36 Commander Sport Cruiser/ Tournament Fisherman?**

By Jim Wick September 2013

This was going to take a little digging to answer. It has come up before and I hoped that once and for all the question would be put to rest.

CCHMG is a FDA36 and that was boat that boat that ran (with some modifications and upgrades) until 1986.

The FFA36 was a MK and there were only 2 built.

Both were called Commander Tournament Fisherman. Some of the 1973's were called Commander Sports Sedan. The 360 designation did not happen until 1978 or 1979 when the FDA and the MG were dropped and the hull number would be something like CCH01230578-360.

I decided to find out what the difference was between the FDA and the FFA. So, I started with the underwater castings to see if they were different. SOB! In my '72 through '74 "Service Department Underwater Parts" there was NO 36' listings. Nothing. In the '74/'75 there was the FDA 36 Tournament Fisherman with 427's and 454's listed. All with 1-3/8" running gear.

Next, I went to my 1973/1974 "Propeller List" and there is FDA-36-000 and engines listed 427, 504 Cummins, 316 Cats, and 555 Cummins, and no 454's. All 1-3/8" running gear.

Also, there was an FFA-36-0001 with 427's and 1-3/8 shafting. And right below was FFA36-0002 with 1-1/2" shafting and the engines were "Thorobred with 2:1 reduction gear. I never knew about that engine or that the boat came with that engine.

One other small interesting tidbit was that the FDA with 427's and reduction gear of 2.5:1 had 22X26" T36 props. The FFA36-0001 with same 427's and the same reduction gear took 22X23 T36 props. So there was some difference between the FDA and FFA., maybe tuna tower or other additional fishing related stuff.

I am 90% sure the hulls were the same. Layouts could have been different.

But to answer your question, FDA's were called "Commander Tournament Fisherman" and the bait wells and fishwells and fighting chairs and all that stuff were subject to change from year to year and sometimes from boat to boat.

FFA's might have been experimental boats Or custom built for some VIP in the company or New York headquarters. If someone wants to know more about those 2 boats, the Mariner's Museum might have some additional pieces of the puzzle. Their "Essential Guide" shows a couple differences: draft on the FDA is 36" and on the FFA it is 38" and

that is interesting because the FFA is 4000 pounds lighter! The other specs are the same. (And they don't mention the "Thobred" engine).

So, that might help or might just add to the confusion.

Jim Wick LPX

### **360 Commander**

**Model years:** 1973 - 1986

**Serial numbers:** CCHMG, CCFMG and CCHDA

**Number of hulls built:** Estimate 300

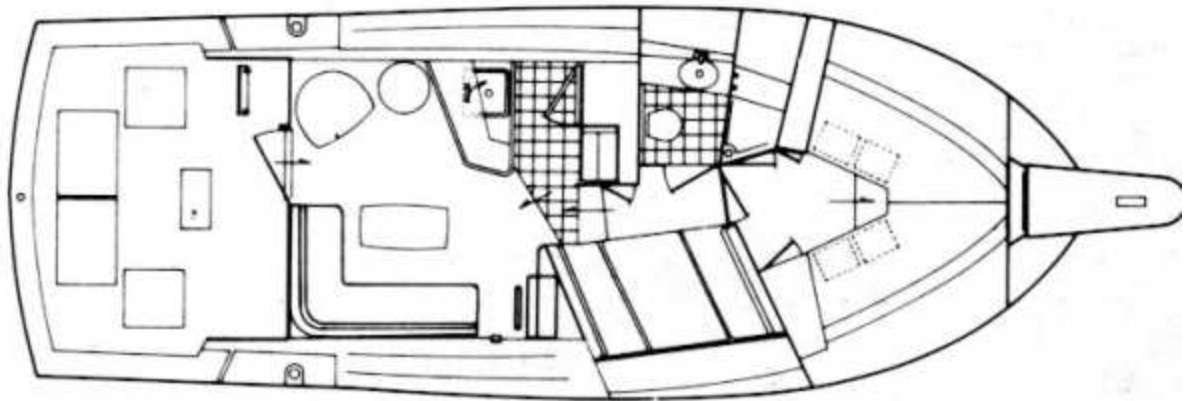
**Length x Beam:** 36' X 13'

**Draft / Weight:** 36" / 22,600 lbs

**Comments:** Built for many years, both in Florida and Michigan. In the early years the boat had 1-3/8" running gear. In 1981, the running gear was up-graded to 1-1/2" for gas and 1-3/4" for diesel. Major bridge redesign in 1984.

#### **Related Information:**

- Floor plan:



# CHRIS CRAFT 360 SPORT SEDAN



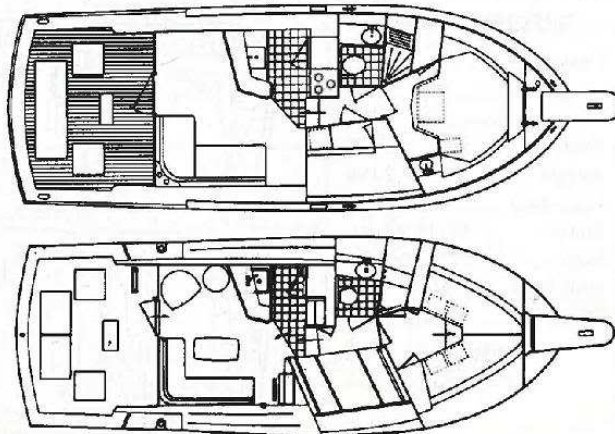
A continual favorite with those seeking an attractive and versatile family convertible, the Chris Craft 360 Commander Sport Sedan has been around for many years in one form or another. She began life in 1973 as a Tournament Fisherman model with two staterooms, became the Chris Craft 360 Commander in 1981, and went to a single-stateroom cabin layout in 1984. Exterior styling changes in 1985 (including a retooled flybridge and deckhouse) were the last significant updates before production ceased in 1986. The interior cabin dimensions

are about average for a 36' convertible, and the cockpit is large enough for a mounted fighting chair and tackle center. The increased fuel capacity (to 400 gallons in 1983) improved the range of the Chris 360 considerably. Standard 454-cid gas engines will cruise at about 18 knots (27 gph) with a top speed of 27-28 knots. Among numerous diesel options, the 300-hp Caterpillar or 320-hp Cummins diesels bring the cruising speed of the Chris 360 Sport Sedan up to approximately 23 knots with a top speed of 26-27 knots. □

## SPECIFICATIONS

Length.....36'0"  
 Beam.....13'0"  
 Draft.....3'2"  
 Weight.....22,600#  
 Clearance.....11'11"  
 Water.....75/100 Gals.  
 Fuel.....300/400 Gals.  
 Cockpit.....NA  
 Hull Type.....Modified-V  
 Designer.....Chris Craft

**Production**  
 1973-86



CHRIS CRAFT

## 36 Sport Cruiser/Tournament Fisherman



**Model years:** 1973 – 1977

**Serial numbers:** FDA-36-001 to FDA-36-131 and FFA-36-001 to FFA-36-002

**Number of hulls built:** 133

**Length x Beam:** 36' 0" x 13' 0"

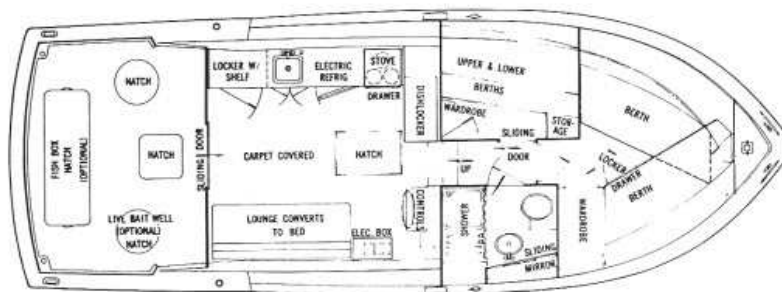
**Draft / Weight:** 36" / 22,600 - 25,300 lbs

**Comments:** There were two 36' Tournament Fisherman models built within hull series FFA-36 in 1973.



## 36' CHRIS-CRAFT TOURNAMENT FISHERMAN

She is 36' of pure fishing machine when you want pure fishing. And 36' of elegant family cruiser when you stow the rods and take off. The cockpit offers plenty of room for boating the big ones or entertaining on board. Change caps, and the galley is something to delight any sea loving home maker. All in all, Chris-Craft has done it again to give you a powerful, beautiful, built-to-take-it Sports Cruiser that's also sea-kindly, trophy-kindly . . . and wife-kindly.



THE MARINERS' MUSEUM  
CHRIS CRAFT  
NEWPORT NEWS, VA 23606

### SPECIFICATIONS

SLEEPING CAPACITY	.....
LENGTH	..... 36'-0"
BEAM	..... 13'-0"
DRAFT	..... 37½"
FREEBOARD, FORWARD	..... 65"
FREEBOARD, AFT	..... 37½"
WEIGHT (lbs. displacement, est.)	..... Gas 18,077 Diesel 20,131

HEIGHT FROM WATERLINE (clearance)	.....
With Command Bridge	..... 12'-0"
Without Command Bridge	..... 10'-4"
FUEL CAPACITY, Gallons	..... Diesel 250 Gas 300
FRESH WATER CAPACITY, Gallons	..... 75
DECKS AND COCKPIT FLOOR	..... Fiberglass

### STANDARD EQUIPMENT

#### PROPULSION

MUFFLERS

#### ELECTRICAL

CIRCUIT BREAKER FUSING, AC & DC Circuits  
DOCKSIDE WIRING, 115V AC 30 Amp., 3-Wire Inlet & 50 ft. 3-Cond. Ship-to-Shore  
Cable w/Adapter, Duplex Outlets

#### GROUND TACKLE

ANCHOR, Danforth 22 lb. "Standard" Model  
ANCHOR CHOCKS  
ANCHOR LINE, ¾" x 150' Nylon Complete w/Eye Splice, Thimble & Anchor Shackle  
ROPE DECK PIPE for Anchor Line

#### COMFORT AND CONVENIENCE

CARPETING Throughout Interior  
DRAPES Throughout Interior  
CRADLE, Shipping, Overland, Domestic  
WATER PRESSURE SYSTEM, Hot & Cold, 115V AC Heated Hot Water  
HORN, Electric  
REFRIGERATOR-FREEZER, 7 cu. ft.  
RANGE, Electric 3-Burner w/Oven, Rotisserie, Stove Cover  
LOUNGE, Convertible, in Salon

#### SCREENS

SHOWER, Complete w/Hot & Cold Water & Drain Pump  
WINDSHIELD WIPER, Electric  
DECK HATCH, Fwd, w/Vent

#### LIGHTS

ANCHOR  
INTERNATIONAL NAVIGATION

#### TOILET

MANUAL

#### SAFETY

ALARM SYSTEM, Engine Oil & Water, Audible & Visual  
BILGE BLOWER  
BILGE PUMP, Automatic  
EXTINGUISHERS, Fire, 2½ lb. Dry Chemical, 2  
LIFE PRESERVERS, 6  
FOG BELL

#### MISCELLANEOUS

FLAG MAST, Aft w/American Flag  
FLAG MAST, Fwd, for Burgee

# 1978 36 Sport Cruiser/Tournament Fisherman Floor Plans

