

1969 Chris Craft Roamer 46 Refit: Engine Room LED Lighting

by 1969roamer46

I was looking for the brush for my shopvac and, after checking everywhere else, dropped down into the engine room. After fiddling around with a fluorescent light I keep down there and not finding the brush, I decided to take a break from polishing stainless and install strip LED lights in the ER. The boat originally came with two standard-size 12v incandescent lights, which are more like heaters that just happen to put out some light. The LEDs throw a lot of light everywhere and a great upgrade.



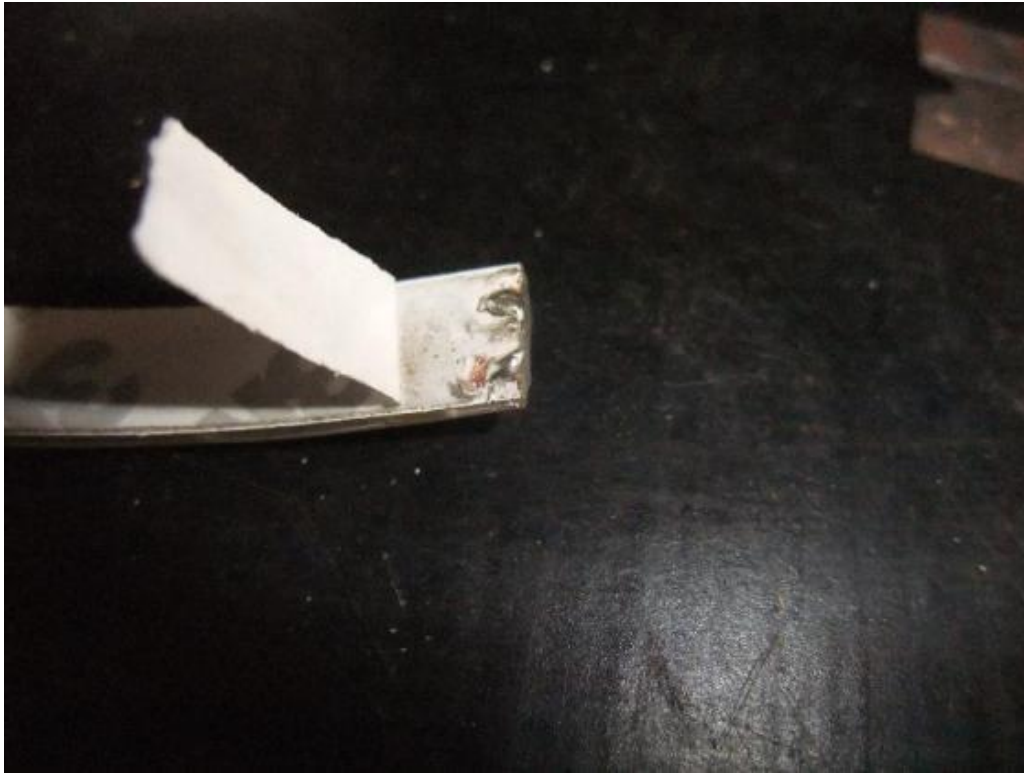
Waterproof 12v LEDs in warm white



Peel back the 2-sided tape protector strip



Scrape off the 2-sided tape at the copper contacts



Tin the copper and the connector wires separately



Solder the wires to the contacts

There are snap-together strip LED connectors for sale, but I've never seen one for the waterproof LED version that can maintain a waterproof connection. I'll apply clear silicone to the soldered areas to make sure the water stays out.



The original engine room light switch



The wimpy light I've been using in the ER



The wimpy light illuminates, but barely



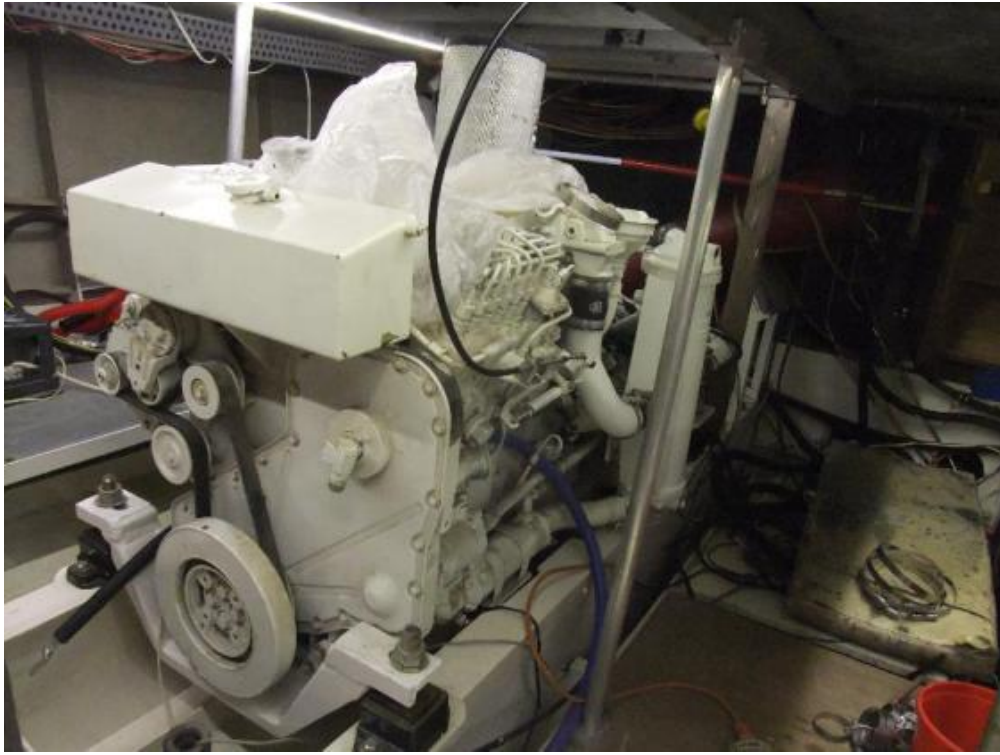
Wipe the attachment area clean and firmly press the LED in place



And another, and another...



Much better!



I'll need to add another strip at the back of the engine room, where I'll be installing the fuel manifold soon. But for now, I'm satisfied with the lights and happy I won't be messing around with the fluorescent one anymore.